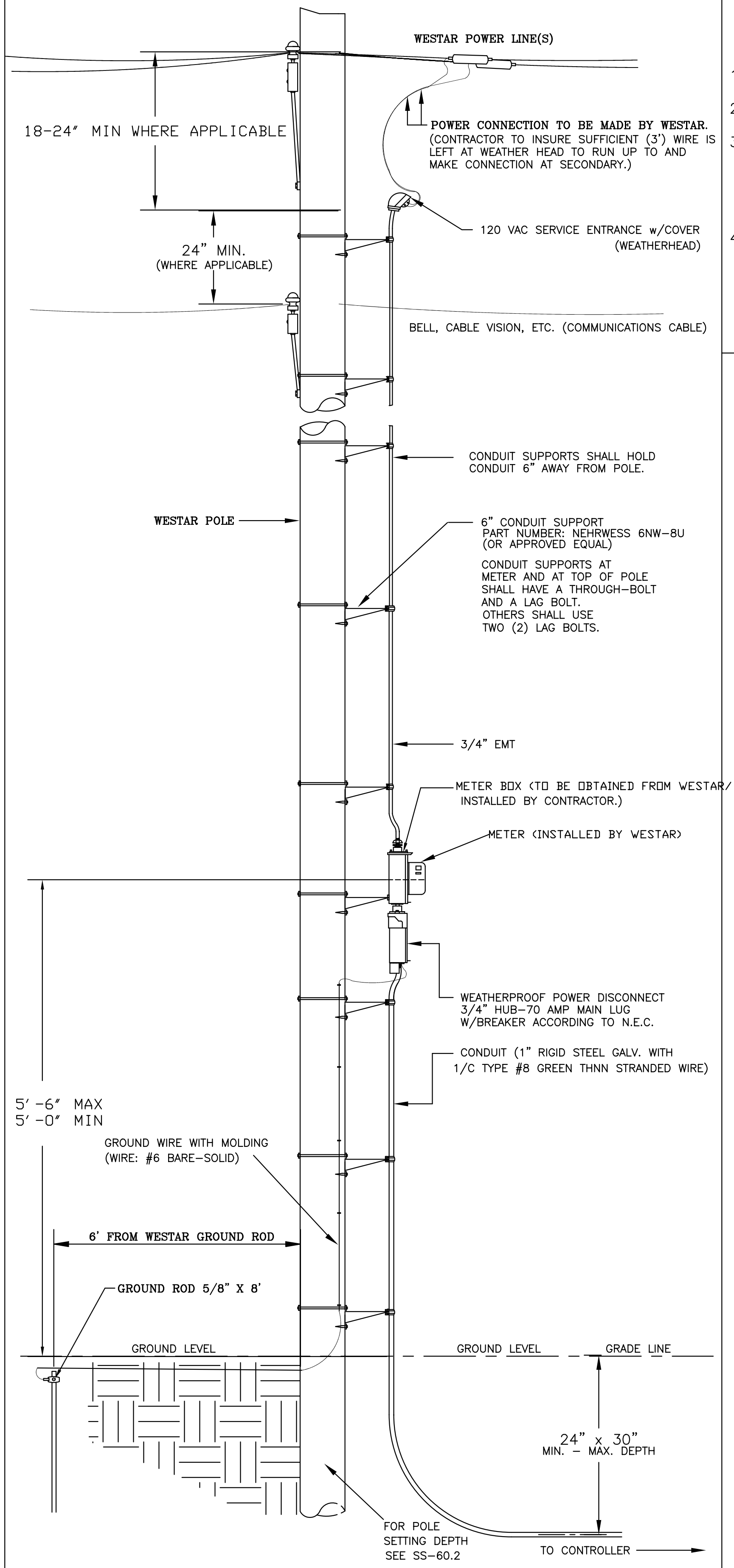
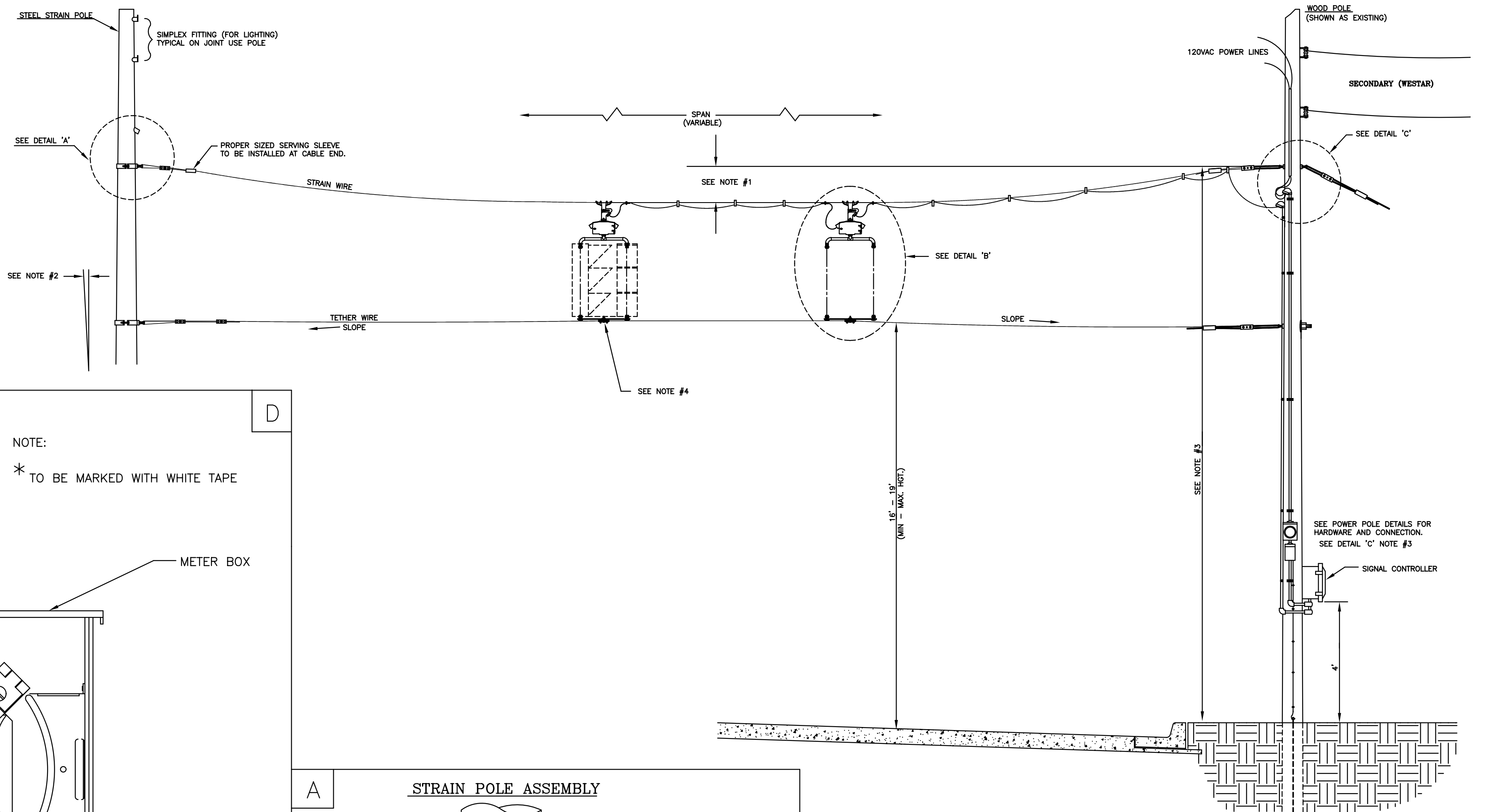


POWER POLE DETAILS

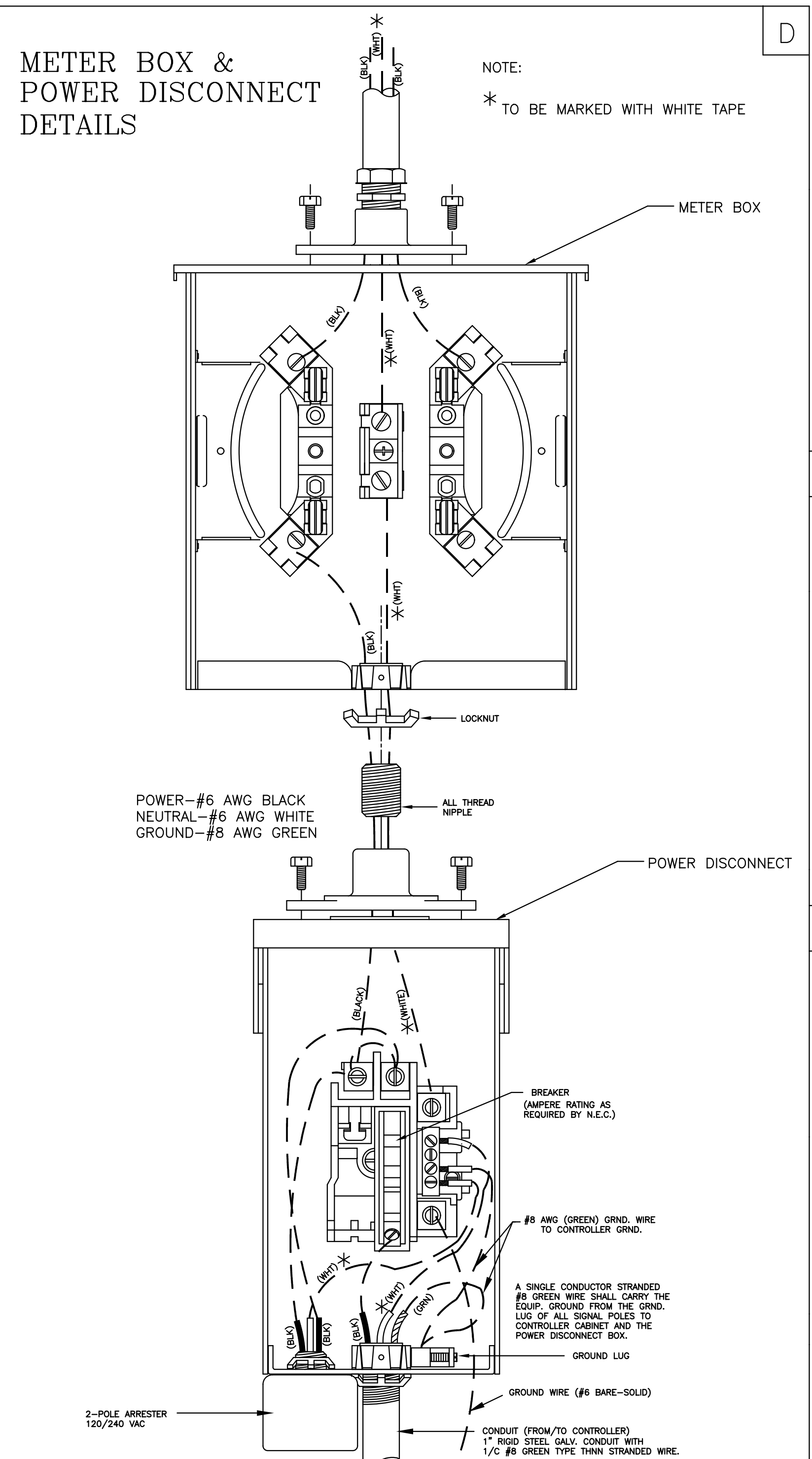


SPANWIRE ASSEMBLY DETAILS

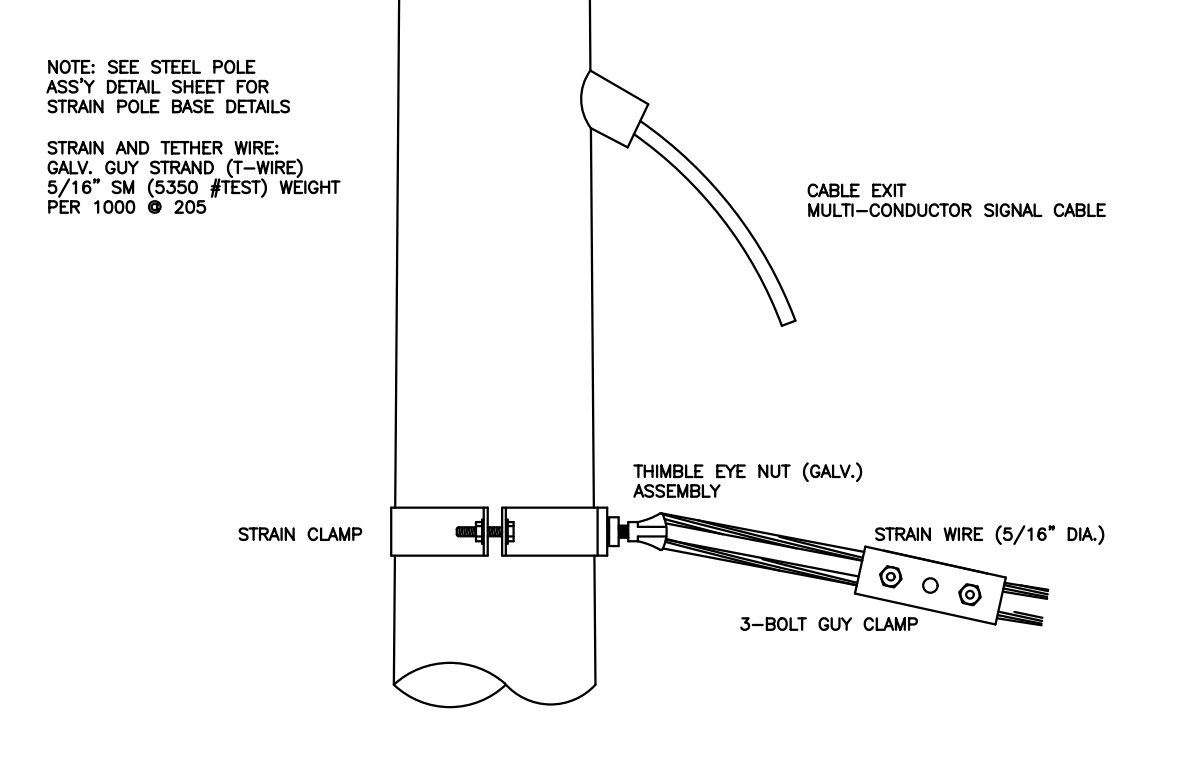
1. MAX. SAG = 5F SPAN.
2. STANDARD BACKRAKE = 1.5'
3. HEIGHT OF STRAIN WIRE HOOK-UP TO BE DETERMINED BY FIELD ENGINEER. TRAFFIC SIGNAL CABLE TO BE SECURED TO STRAIN (SPAN) WIRE WEATHERABLE NYLON CABLE HANGERS (12" CTR.) DETAIL 'B'
4. TETHER CLAMP TO BE DESIGNED TO RELEASE UNDER 'HIGH WIND LOAD' TO PERMIT SIGNAL 'FREE SWING'.



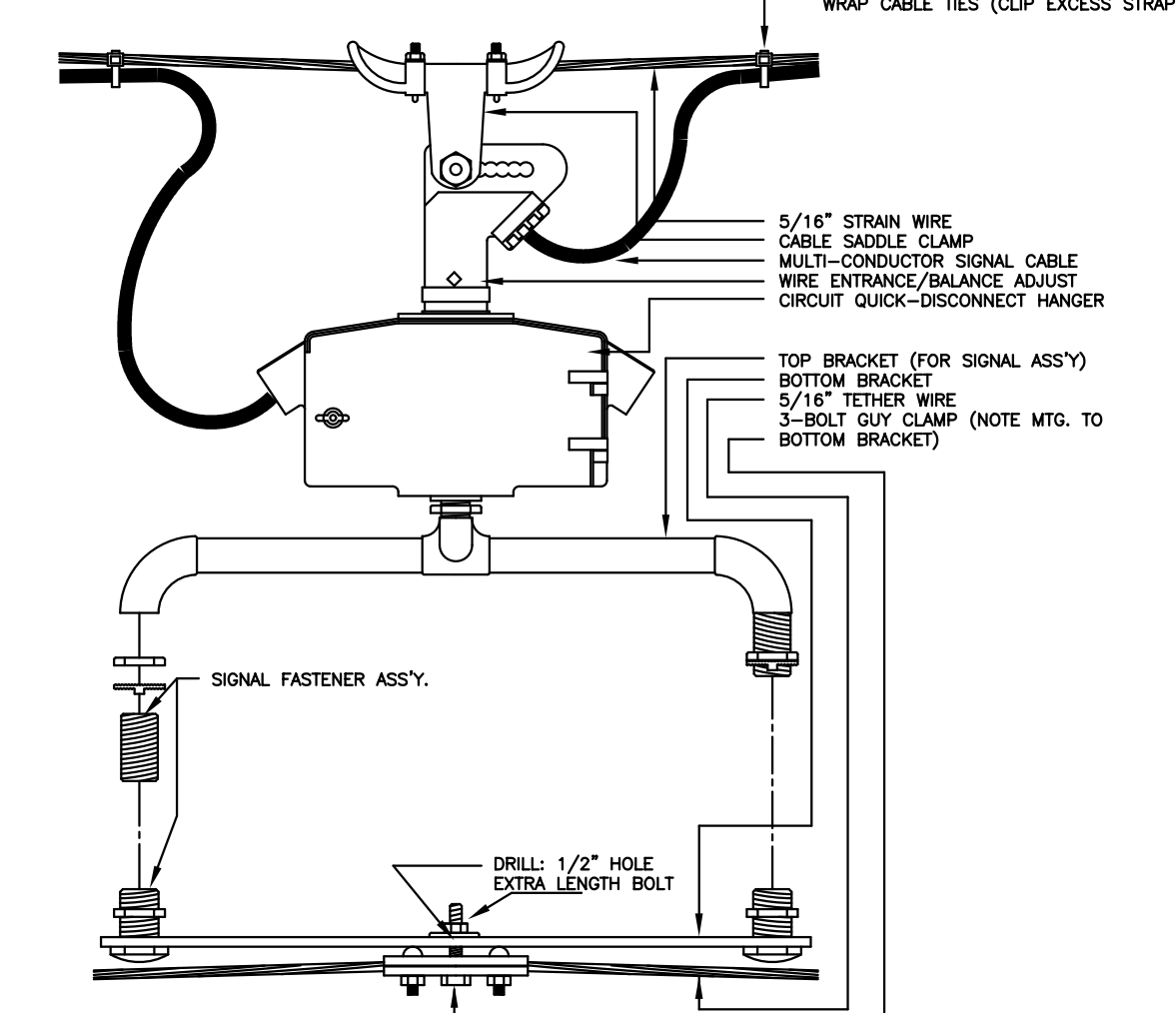
METER BOX & POWER DISCONNECT DETAILS



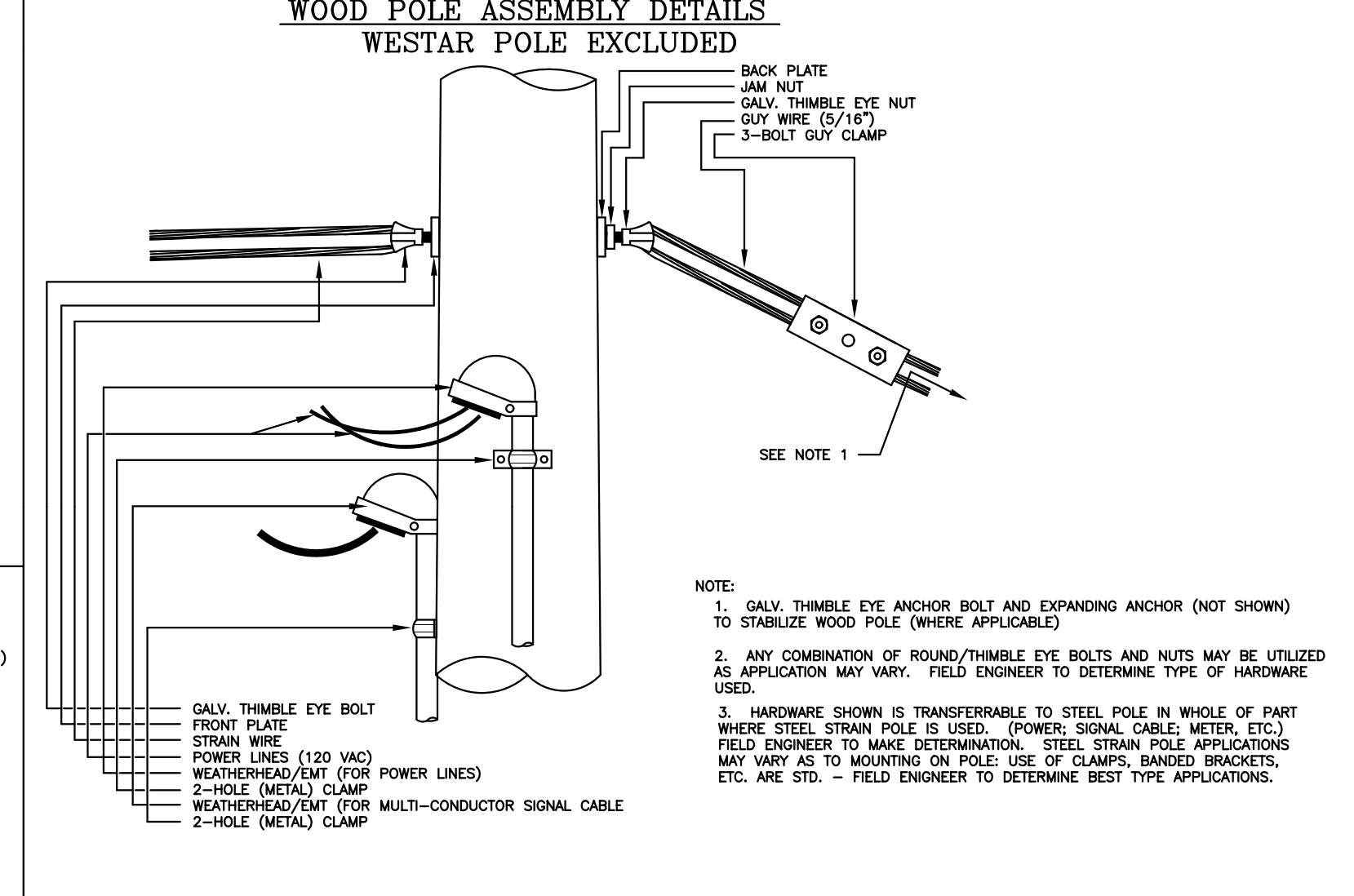
A STRAIN POLE ASSEMBLY



B SIGNAL BRACKET ASSEMBLY DETAILS



C WOOD POLE ASSEMBLY DETAILS WESTAR POLE EXCLUDED



CITY OF WICHITA
PUBLIC WORKS & UTILITIES ENGINEERING DIVISION

| | | |
|--|----------------------|---------------------|
| POWER POLE AND SPAN POLE ASSEMBLY DETAILS | | |
| TRAFFIC ENGINEER BRIAN A. COON, P.E. | | |
| PROJECT NUMBER 87 N-0614-01 | OCA NUMBER 707066 | DATE 5/26/2017 |
| CITY ENGINEER'S OFFICE CITY HALL - SEVENTH FLOOR 455 NORTH MAIN STREET WICHITA, KANSAS 67202-1620 (316) 268-4501 | | SHEET 161 of 236 |