

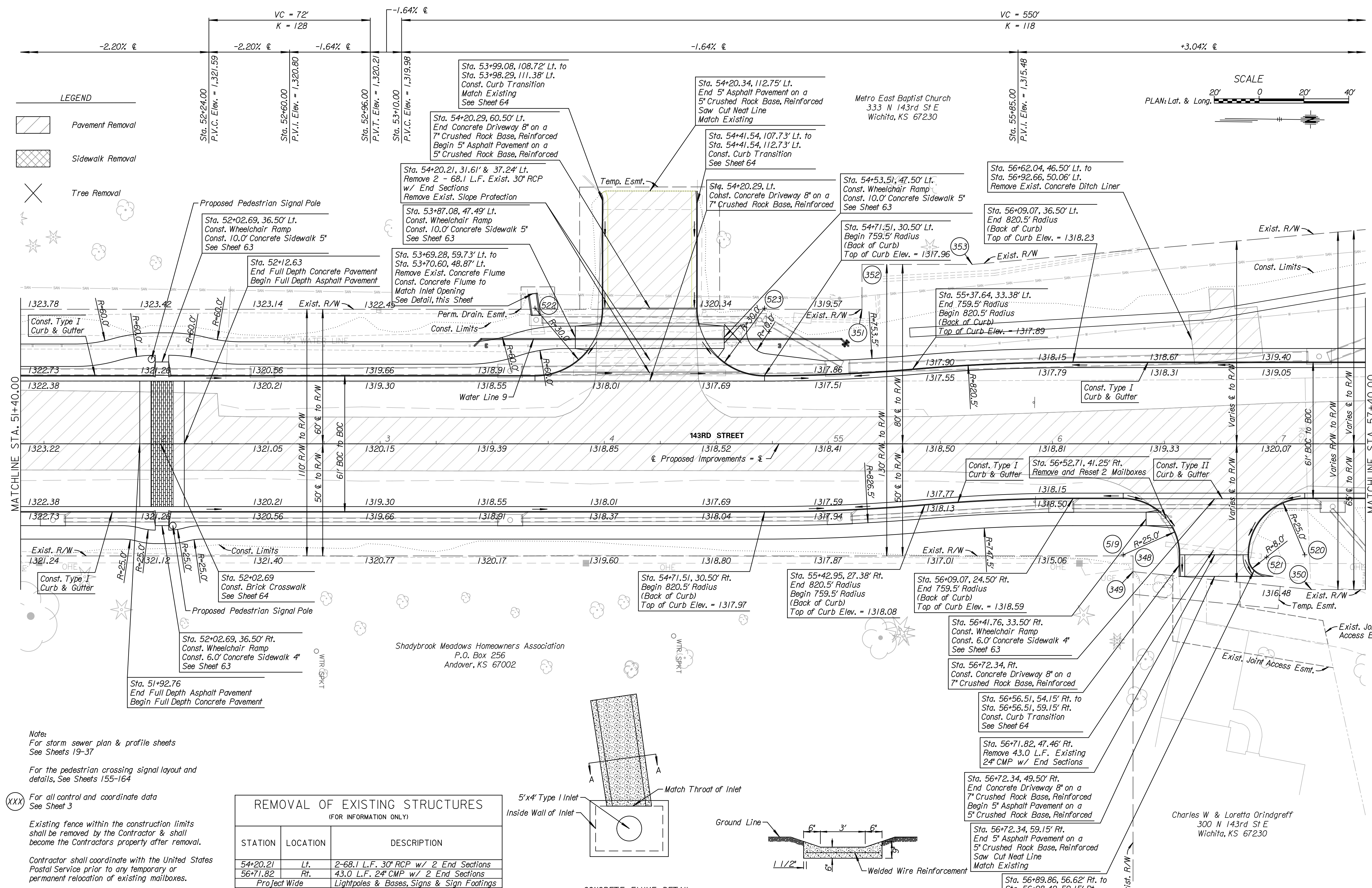
CONSULTANTS:

143RD STREET IMPROVEMENTS
 WICHITA, KANSAS



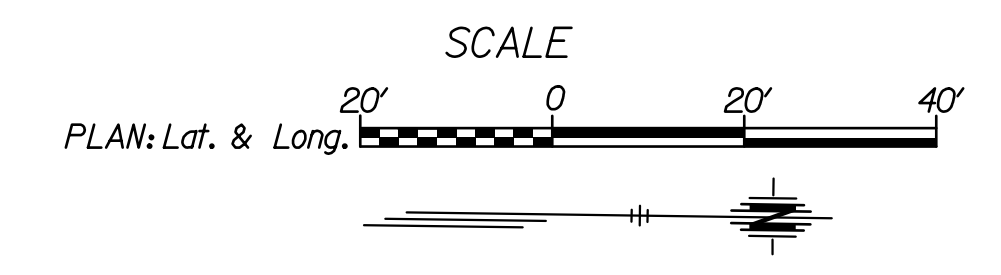
REVISIONS:	DESCRIPTION	MARK	DATE

PROJ NO: 87 N-0614-01
SCALE: 1" = 20'
DATE: 5/26/2017
DESIGNED BY: TAU
DRAWN BY: TAU
CHECKED BY: MDB
SHEET TITLE:
143RD STREET PLAN & PROFILE STA. 51+40.00 TO STA. 57+40.00
SHEET NO.
17
SHEET 17 OF 236



LEGEND

- Pavement Removal
- Sidewalk Removal
- Tree Removal



Note:
 For storm sewer plan & profile sheets
 See Sheets 19-37

For the pedestrian crossing signal layout and details, See Sheets 155-164

For all control and coordinate data
 See Sheet 3

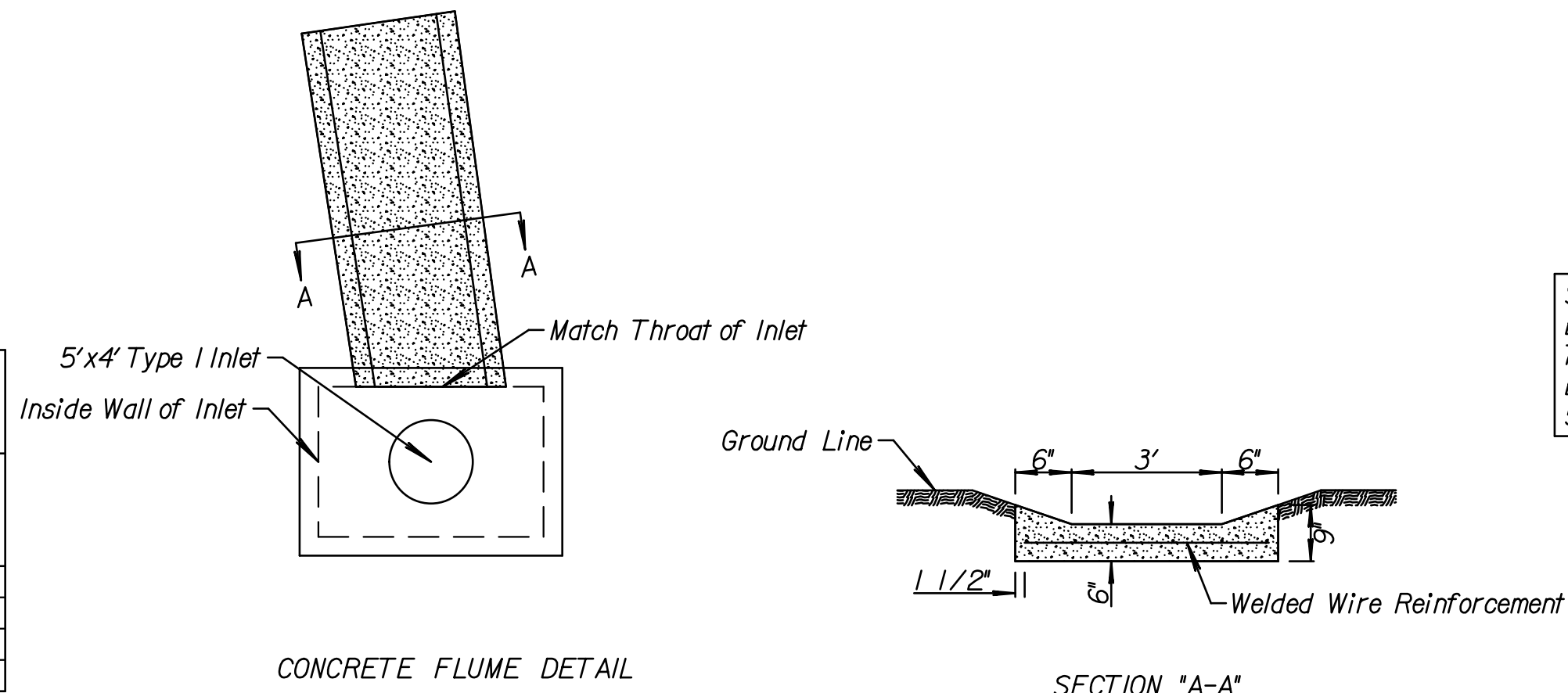
Existing fence within the construction limits shall be removed by the Contractor & shall become the Contractors property after removal.

Contractor shall coordinate with the United States Postal Service prior to any temporary or permanent relocation of existing mailboxes.

For Water Line Plan and Profile Sheets,
 See Sheets 169-176

REMOVAL OF EXISTING STRUCTURES
 (FOR INFORMATION ONLY)

STATION	LOCATION	DESCRIPTION
54+20.21	Lt.	2-68.1 L.F. 30" RCP w/ 2 End Sections
56+71.82	Rt.	43.0 L.F. 24" CMP w/ 2 End Sections
Project Wide		Lightpoles & Bases, Signs & Sign Footings



5/26/2017 11:34:02 AM c:\tran\systems\paw_baill\tran\systems\paw\14ummed\0228400C-RDVM-M01-108.dgn