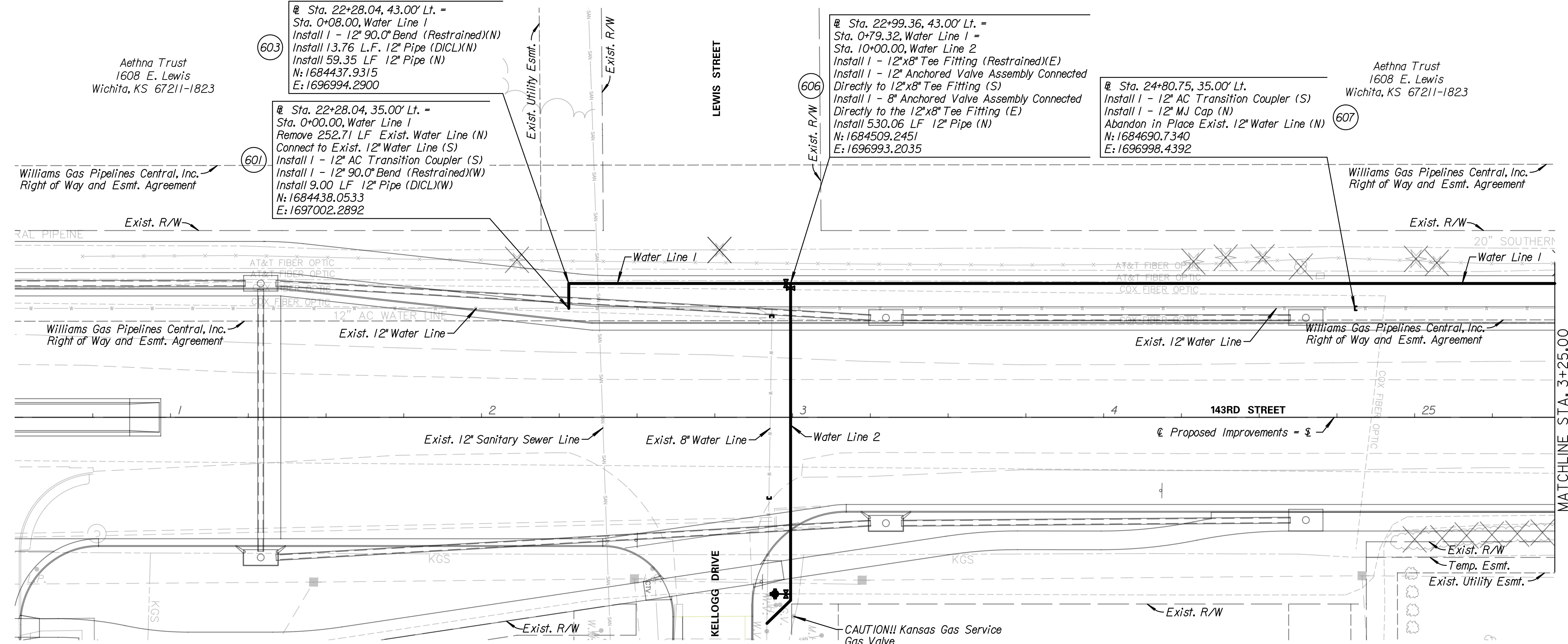


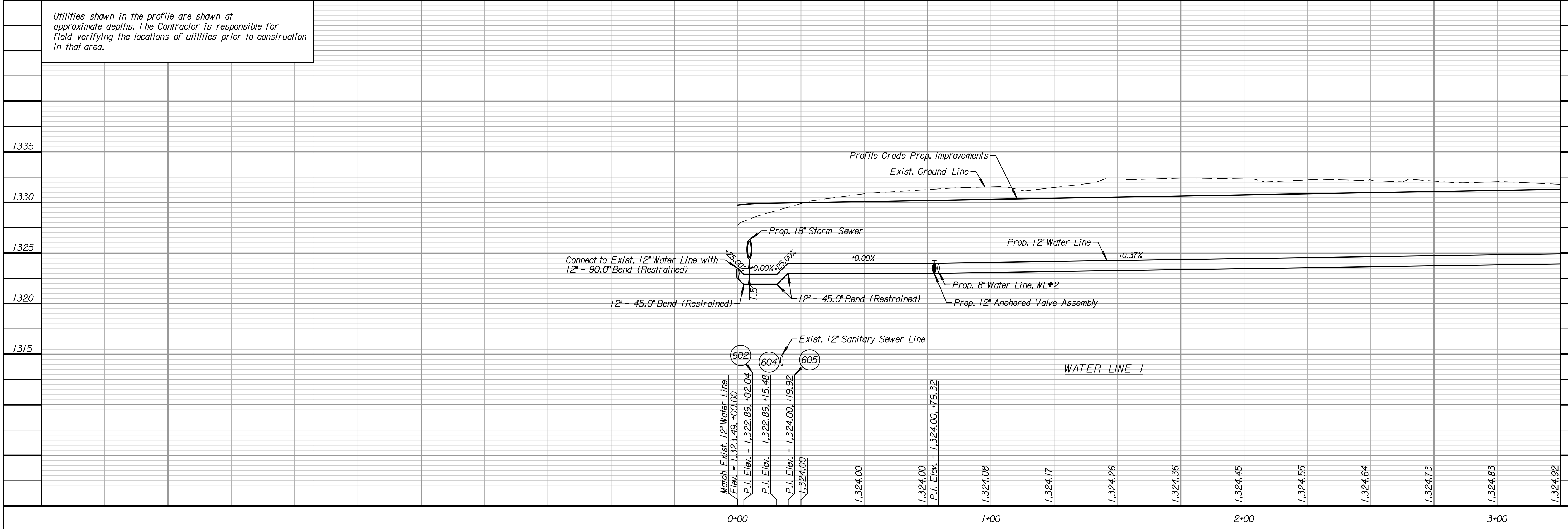
Aethna Trust
1608 E. Lewis
Wichita, KS 67211-1823

Aethna Trust
1608 E. Lewis
Wichita, KS 67211-1823



Note:
For Water Line 2 information, See Sheet 173
All 12" waterline shall be restrained joint pipe
It is the Contractor's responsibility to contact & coordinate with the utility companies prior to the installation of the water lines to locate any existing utilities that have not been previously located or new utilities that have been relocated.

Utilities shown in the profile are shown at approximate depths. The Contractor is responsible for field verifying the locations of utilities prior to construction in that area.



Tran Systems
245 NORTH WACO
SUITE 222
WICHITA, KANSAS 67202
PHONE: 316-303-3000
FAX: 316-303-0156

CONSULTANTS:

143RD STREET IMPROVEMENTS
WICHITA, KANSAS
CITY OF WICHITA

REVISIONS:	MARK	DATE	DESCRIPTION

PROJ NO: 87 N-0614-01
SCALE: 1" = 20'
DATE: 5/26/2017
DESIGNED BY: TAU
DRAWN BY: TAU
CHECKED BY: MDB

SHEET TITLE:
**143RD STREET WATER LINE 1
STA. 0+00.00 TO
STA. 3+25.00**

SHEET NO.
171

SHEET 171 OF 236