

CONSULTANTS:

143RD STREET IMPROVEMENTS
 WICHITA, KANSAS

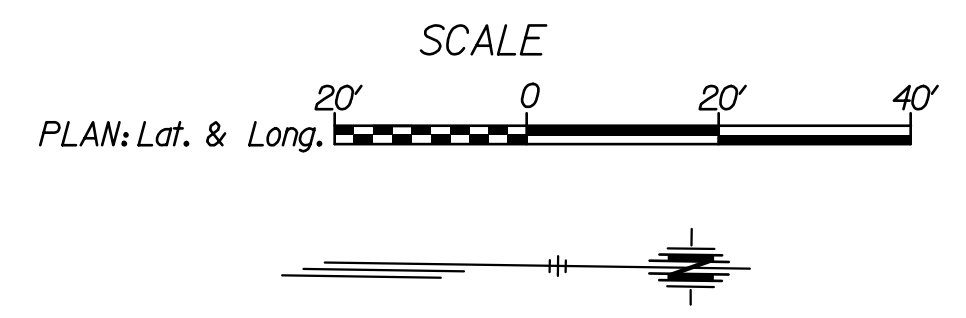


REVISIONS:	MARK	DATE	DESCRIPTION

PROJ NO: 87 N-0614-01
 SCALE: 1" = 20'
 DATE: 5/26/2017
 DESIGNED BY: TAU
 DRAWN BY: TAU
 CHECKED BY: MDB

SHEET TITLE:
**143RD STREET
 PLAN & PROFILE
 STA. 57+40.00 TO
 STA. 62+63.54**

SHEET NO.
18
 SHEET 18 OF 236



LEGEND

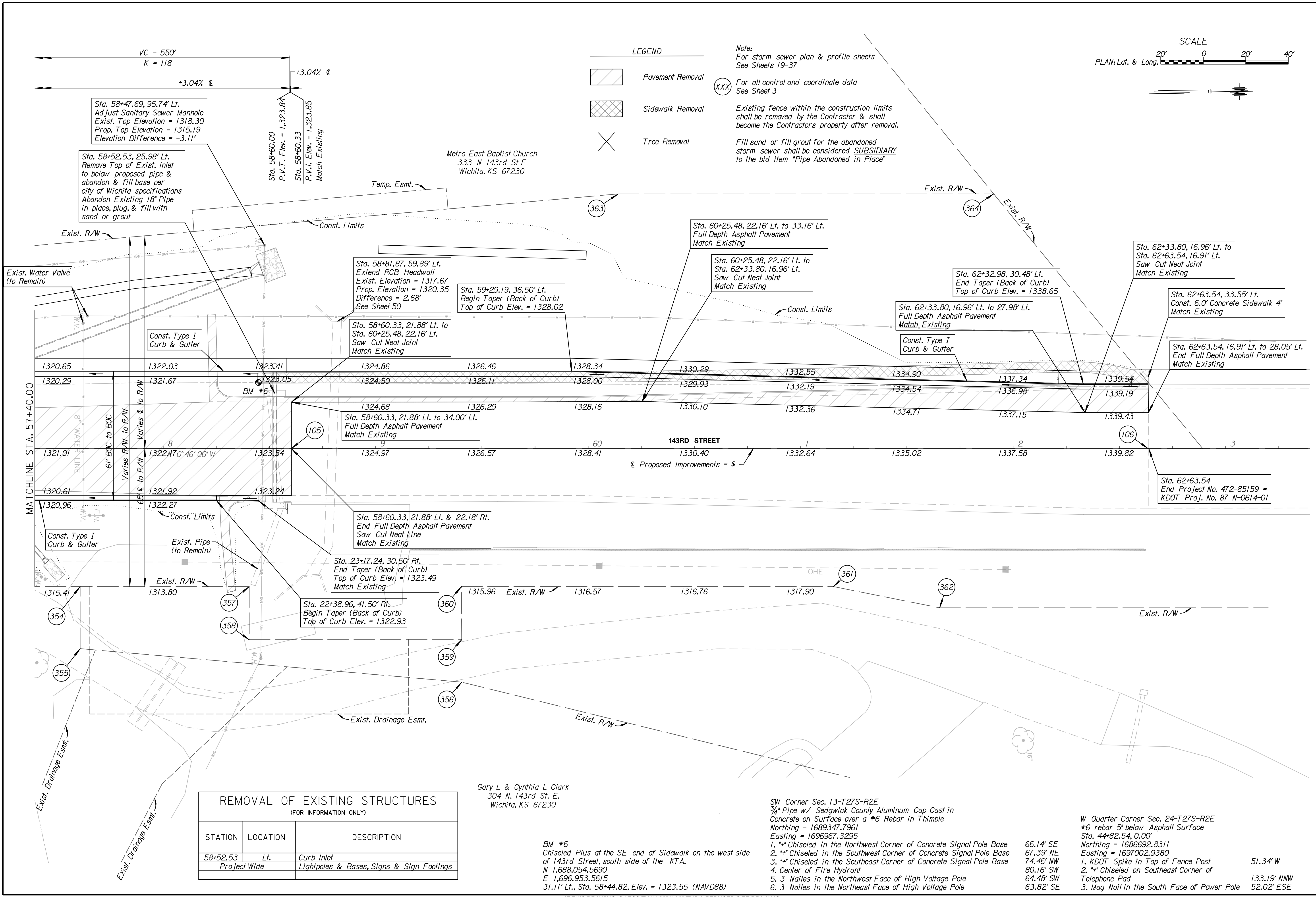
- Pavement Removal
- Sidewalk Removal
- Tree Removal

Note:
 For storm sewer plan & profile sheets
 See Sheets 19-37

(XXX) For all control and coordinate data
 See Sheet 3

Existing fence within the construction limits
 shall be removed by the Contractor & shall
 become the Contractors property after removal.

Fill sand or fill grout for the abandoned
 storm sewer shall be considered SUBSIDIARY
 to the bid item "Pipe Abandoned in Place"



REMOVAL OF EXISTING STRUCTURES
 (FOR INFORMATION ONLY)

STATION	LOCATION	DESCRIPTION
58+52.53	Lt.	Curb Inlet
	Project Wide	Lightpoles & Bases, Signs & Sign Footings

Gary L & Cynthia L Clark
 304 N. 143rd St. E.
 Wichita, KS 67230

BM #6
 Chiseled Plus at the SE end of Sidewalk on the west side
 of 143rd Street, south side of the KTA.
 N 1,688,054.5690
 E 1,696,953.5615
 31.11' Lt., Sta. 58+44.82, Elev. = 1323.55 (NAVD88)

SW Corner Sec. 13-T27S-R2E
 3/4" Pipe w/ Sedgwick County Aluminum Cap Cast in
 Concrete on Surface over a #6 Rebar in Thimble
 Northing = 1689347.7961
 Easting = 1696967.3295

- **Chiseled in the Northwest Corner of Concrete Signal Pole Base
- **Chiseled in the Southwest Corner of Concrete Signal Pole Base
- **Chiseled in the Southeast Corner of Concrete Signal Pole Base
- Center of Fire Hydrant
- 3 Nails in the Northwest Face of High Voltage Pole
- 3 Nails in the Northeast Face of High Voltage Pole

W Quarter Corner Sec. 24-T27S-R2E
 #6 rebar 5' below Asphalt Surface
 Sta. 44+82.54, 0.00'
 Northing = 1686692.8311
 Easting = 1697002.9380

- KDOT Spike in Top of Fence Post 51.34' W
- **Chiseled on Southeast Corner of Telephone Pad 133.19' NNN
- Mag Nail in the South Face of Power Pole 52.02' ESE