

SCALE: 1"=20'

124  
Sta. 30+00.0 SWS Line No. 3  
Sta. 21+67.0 SWS Line No. 2  
Std. Area Inlet  
L=5'-4", W=3'-10"  
Top Elev.=165.0  
See Sheet No. 20

131  
Sta. 31+57.6 SWS Line No. 3  
Const. Std. Area Inlet  
L=5'-4", W=3'-10"  
Top Elev.=165.0  
Install 155.9 L.F. 15" RCP (N)  
See Sheet No. 20

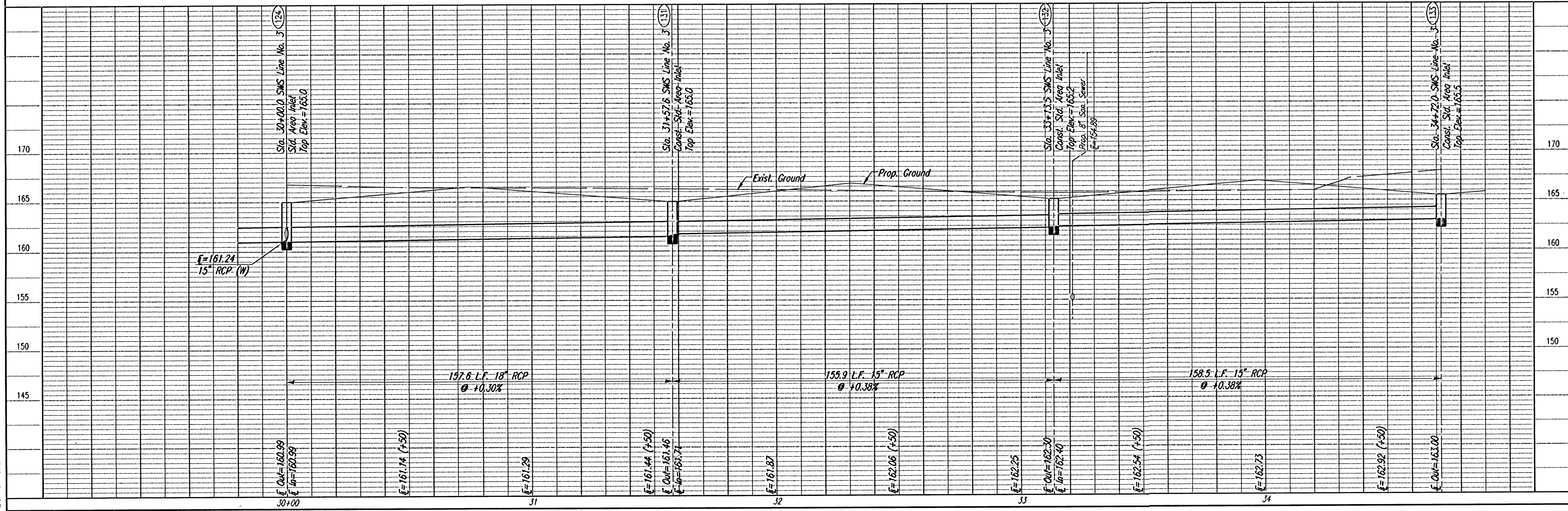
Prop. SS MH  
Top Elev.=165.7  
E In=155.13 (W)  
E In=154.93 (S)  
E Out=154.93 (N)

133  
Sta. 34+72.0 SWS Line No. 3  
Const. Std. Area Inlet  
L=5'-4", W=3'-10"  
Top Elev.=165.5  
See Sheet No. 20

132  
Sta. 33+13.5 SWS Line No. 3  
Const. Std. Area Inlet  
L=5'-4", W=3'-10"  
Top Elev.=165.2  
Install 158.5 L.F. 15" RCP (W)  
See Sheet No. 20

| SWS LINE NO. 3 COORDINATE LIST |           |           |
|--------------------------------|-----------|-----------|
| POINT                          | NORTH     | EAST      |
| 124                            | 6405.8788 | 3003.2313 |
| 131                            | 6562.9969 | 2991.2598 |
| 132                            | 6718.5055 | 2979.6770 |
| 133                            | 6722.1636 | 2821.1871 |

SWS LINE NO. 3



i: 2002/02/23/17/swsline3.dgn  
Date Plotted: Oct. 31, 2002  
Deliver to: Bill Severson

EMERGENCY-PHASE 4  
CITY OF WICHITA, KANSAS

**SWS LINE NO. 3**  
STA. 30+00.0 TO STA. 34+72.0

C.O.W. PROJ. NO. 472-82258

---

Professional Engineering Consultants, P.A.  
303 S. TORREY • WICHITA, KANSAS 67202  
316-262-2691 • FAX 316-262-3003

Designed by: BER  
Drawn by: BUS  
Job No.: 02397  
Date: AUG. 2002

Sheet 18 of 54