

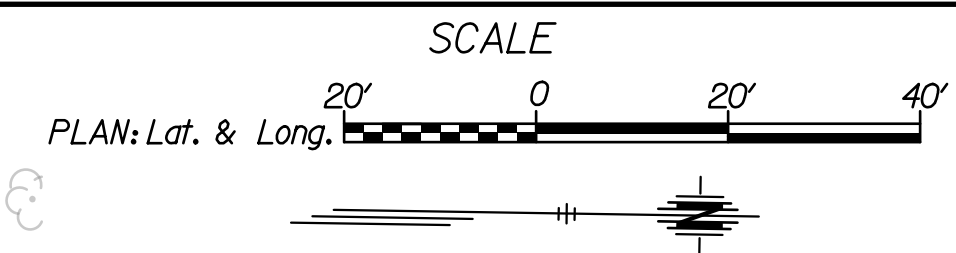
Note:  
There is minimal clearance between the aggregate base and top of proposed storm sewer pipe. Use caution whenever construction activity takes place in those areas.

The Contractor shall coordinate with the utility companies to locate any existing utilities that have not been previously located.

Any storm sewer adjacent to the curb & gutter or under any proposed pavement on mainline, side roads or entrances shall be backfilled in accordance with the City of Wichita Specifications unless otherwise noted on the plans or by the Engineer.

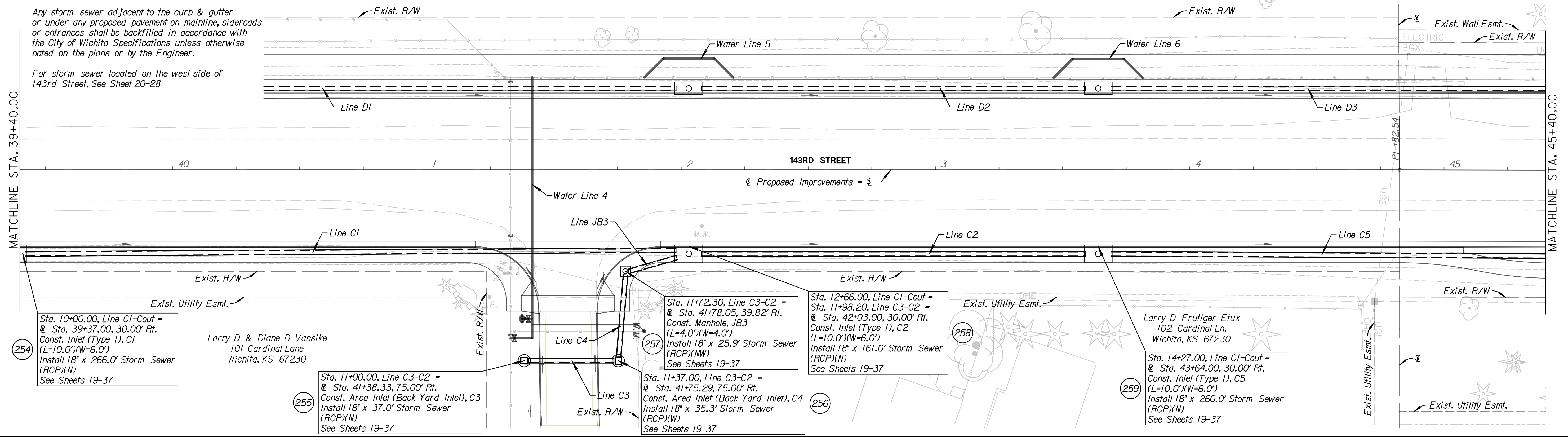
For storm sewer located on the west side of 143rd Street, See Sheet 20-28

W. E. Lusk Jr. Trustee  
1608 E. Lewis  
Wichita, KS 67211



MATCHLINE STA. 39+40.00

MATCHLINE STA. 45+40.00



Sta. 10+00.00, Line C1-Cout =  
Sta. 39+37.00, 30.00' Rt.  
Const. Inlet (Type I), C1  
(L=10.0')(W=6.0')  
Install 18" x 266.0' Storm Sewer  
(RCP)(N)  
See Sheets 19-37

Larry D & Diane D Vansike  
101 Cardinal Lane  
Wichita, KS 67230

Sta. 11+00.00, Line C3-C2 =  
Sta. 41+38.33, 75.00' Rt.  
Const. Area Inlet (Back Yard Inlet), C3  
Install 18" x 37.0' Storm Sewer  
(RCP)(N)  
See Sheets 19-37

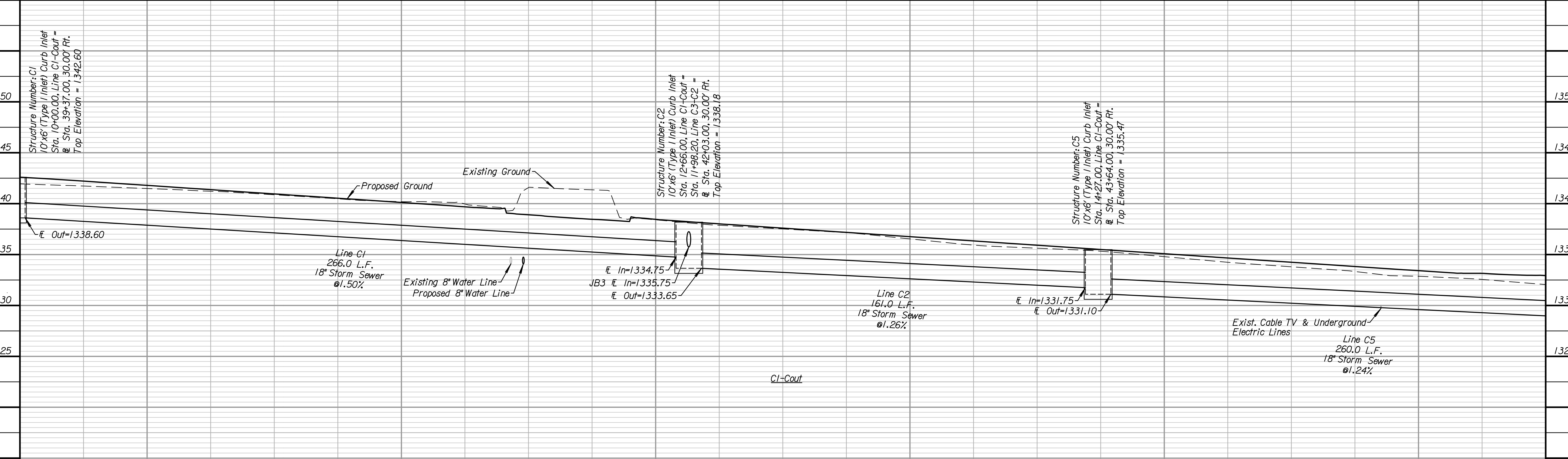
Sta. 11+72.30, Line C3-C2 =  
Sta. 41+78.05, 39.82' Rt.  
Const. Manhole, JB3  
(L=4.0')(W=4.0')  
Install 18" x 25.9' Storm Sewer  
(RCP)(NW)  
See Sheets 19-37

Sta. 11+37.00, Line C3-C2 =  
Sta. 41+75.29, 75.00' Rt.  
Const. Area Inlet (Back Yard Inlet), C4  
Install 18" x 35.3' Storm Sewer  
(RCP)(W)  
See Sheets 19-37

Sta. 12+66.00, Line C1-Cout =  
Sta. 11+98.20, Line C3-C2 =  
Sta. 42+03.00, 30.00' Rt.  
Const. Inlet (Type I), C2  
(L=10.0')(W=6.0')  
Install 18" x 161.0' Storm Sewer  
(RCP)(N)  
See Sheets 19-37

Larry D Frutiger Etux  
102 Cardinal Ln.  
Wichita, KS 67230

Sta. 14+27.00, Line C1-Cout =  
Sta. 43+64.00, 30.00' Rt.  
Const. Inlet (Type I), C5  
(L=10.0')(W=6.0')  
Install 18" x 260.0' Storm Sewer  
(RCP)(N)  
See Sheets 19-37



All utilities shown in the profile are shown at approximate depths. The Contractor is responsible for field verifying the locations of utilities prior to construction in that area.

**Tran Systems**  
245 NORTH WACO  
SUITE 222  
WICHITA, KANSAS 67202  
PHONE: 316-303-3000  
FAX: 316-303-0166

CONSULTANTS:

143RD STREET IMPROVEMENTS  
WICHITA, KANSAS  
**CITY OF WICHITA**

REVISIONS:	MARK	DATE	DESCRIPTION

PROJ NO: 87 N-0614-01  
SCALE: 1" = 20'  
DATE: 5/26/2017  
DESIGNED BY: TAU  
DRAWN BY: TAU  
CHECKED BY: MDB

SHEET TITLE:  
**143RD STREET STORM SEWER STA. 39+40.00 TO STA. 45+40.00**

SHEET NO.  
**33**  
SHEET 33 OF 236

taumdel 5/26/2017 11:05:49 AM c:\tran\systems\paw\_bocall\tran\systems\paw\taumdel\228400c-sdr-m01-10s.dgn