

CONSULTANTS:

45TH & HILLSIDE
 INTERSECTION IMPROVEMENT
 WICHITA, KANSAS

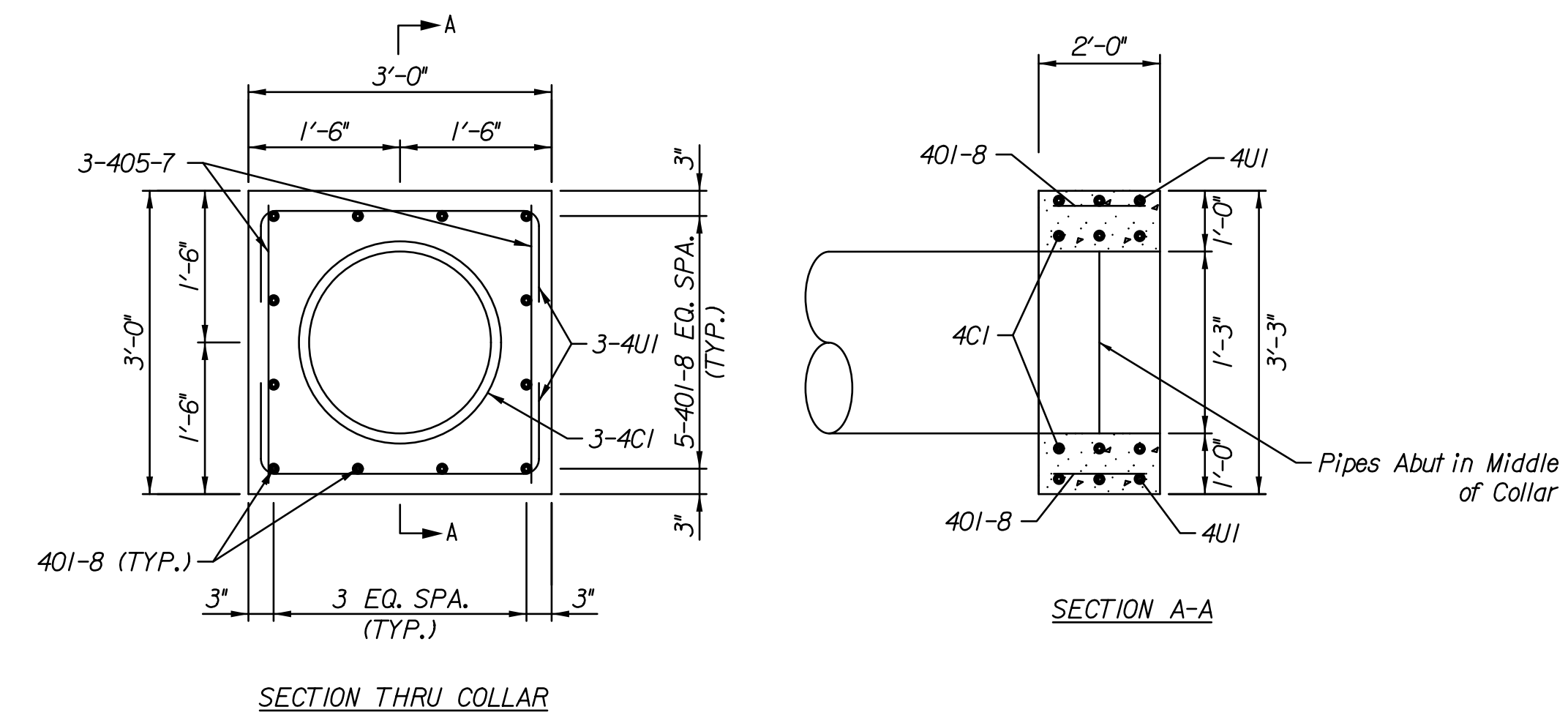

REVISIONS:	MARK	DATE	DESCRIPTION

PROJ NO: 87 N-0614-01
 SCALE: N/A
 DATE: 5/26/2017
 DESIGNED BY: TAU
 DRAWN BY: TAU
 CHECKED BY: MDB

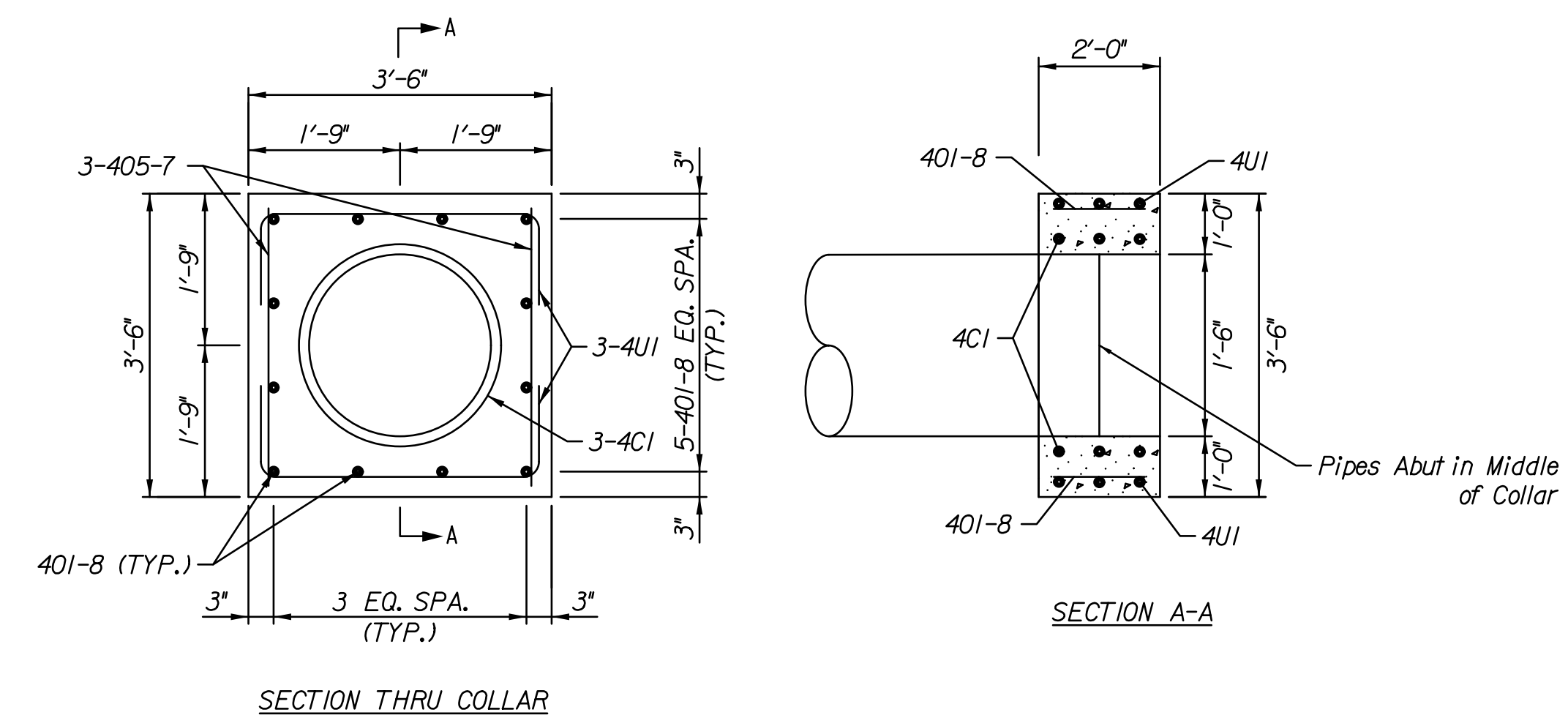
SHEET TITLE:
CONCRETE COLLAR DETAIL

SHEET NO.
49
 SHEET 49 OF 236

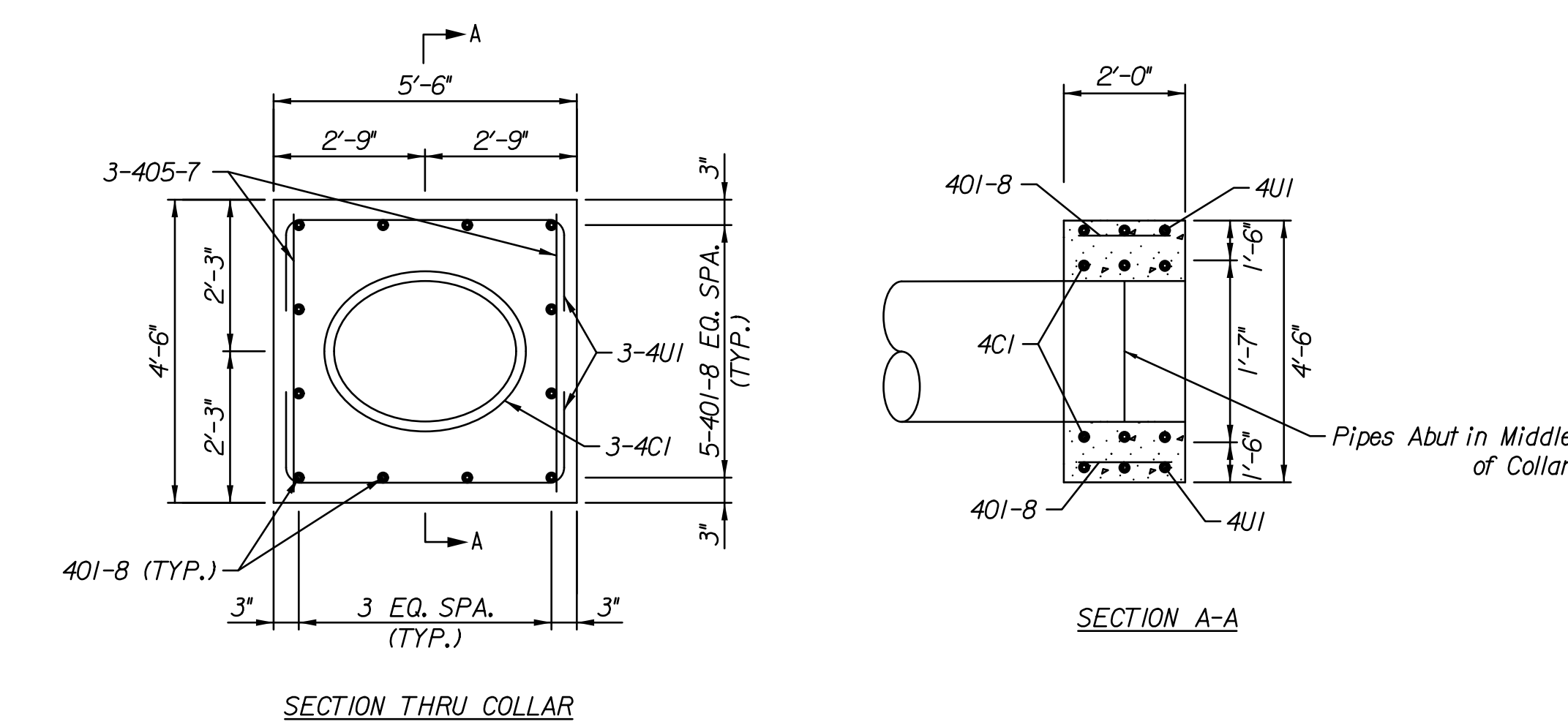
STATION	SIDE	QTY	SIZE	CROSS ROAD PIPE	EXTENSION PIPE
14+39.61	31.02' Rt.	1	18"	18" RCP	18" RCP
17+60.20	44.34' Rt.	1	15"	15" CMP	15" RCP
18+79.47	37.66' Lt.	1	30"x19"	30"x19" HERCP	30"x19" HERCP
18+80.75	44.63' Rt.	1	30"x19"	30"x19" HERCP	30"x19" HERCP



CONCRETE COLLAR DETAILS (15")
 NOT TO SCALE



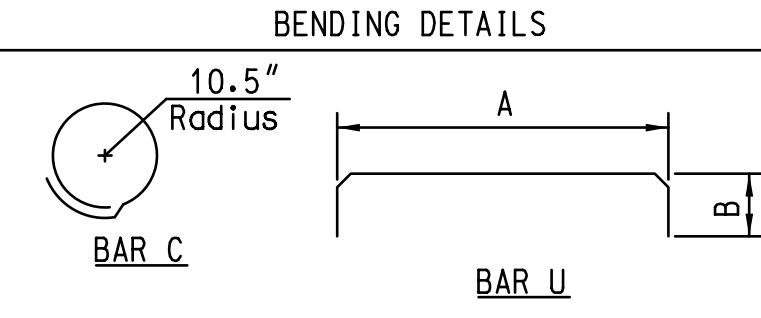
CONCRETE COLLAR DETAILS (18")
 NOT TO SCALE



CONCRETE COLLAR DETAILS (30"x19")
 NOT TO SCALE

QUANTITY	MARK	SIZE	TYPE	A	B	LENGTH
3	4C1	4	C	-	-	6'-6"
6	4U1	4	U	2'-8"	0'-10"	4'-4"
12	401-8	4	-	-	-	1'-8"
6	405-7	-	-	-	-	2'-7"

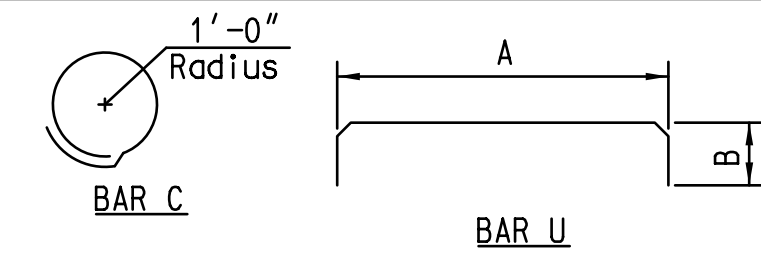
WEIGHT OF REBAR = 55 LBS. PER COLLAR
 VOLUME OF CONCRETE = 0.67 CU. YDS. PER COLLAR



ALL DIMENSIONS ARE OUT TO OUT

QUANTITY	MARK	SIZE	TYPE	A	B	LENGTH
3	4C1	4	C	-	-	7'-3"
6	4U1	4	U	3'-2"	1'-0"	5'-2"
12	401-8	4	-	-	-	1'-8"
6	405-7	-	-	-	-	3'-1"

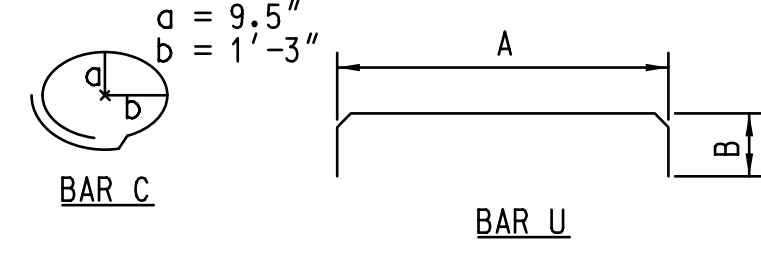
WEIGHT OF REBAR = 62 LBS. PER COLLAR
 VOLUME OF CONCRETE = 0.91 CU. YDS. PER COLLAR



ALL DIMENSIONS ARE OUT TO OUT

QUANTITY	MARK	SIZE	TYPE	A	B	LENGTH
3	4C1	4	C	-	-	7'-6"
6	4U1	4	U	5'-2"	1'-3"	7'-8"
12	401-8	4	-	-	-	1'-8"
6	405-7	-	-	-	-	4'-1"

WEIGHT OF REBAR = 76 LBS. PER COLLAR
 VOLUME OF CONCRETE = 1.83 CU. YDS. PER COLLAR



ALL DIMENSIONS ARE OUT TO OUT

NOTES:

- ALL REINFORCEMENT AND CONCRETE SHALL BE IN ACCORDANCE WITH THE CITY OF WICHITA SPECIFICATIONS UNLESS OTHERWISE SPECIFIED IN THE PLANS OR BY THE ENGINEER.
- ALL CHANGES TO THE ABOVE REQUIREMENTS SHALL BE SUBJECT TO THE APPROVAL OF THE ENGINEER. THE CONTRACTOR SHALL FIELD VERIFY ALL DIMENSIONS OF EXISTING CULVERT.
- E.F. DENOTES EACH FACE.
- EQ. SPA. DENOTES EQUAL SPACES.
- CONCRETE COLLARS SHALL BE PAID FOR PER EACH AND BY THE THE BID ITEM "CONCRETE COLLARS".