

CONSULTANTS:

143RD STREET IMPROVEMENTS

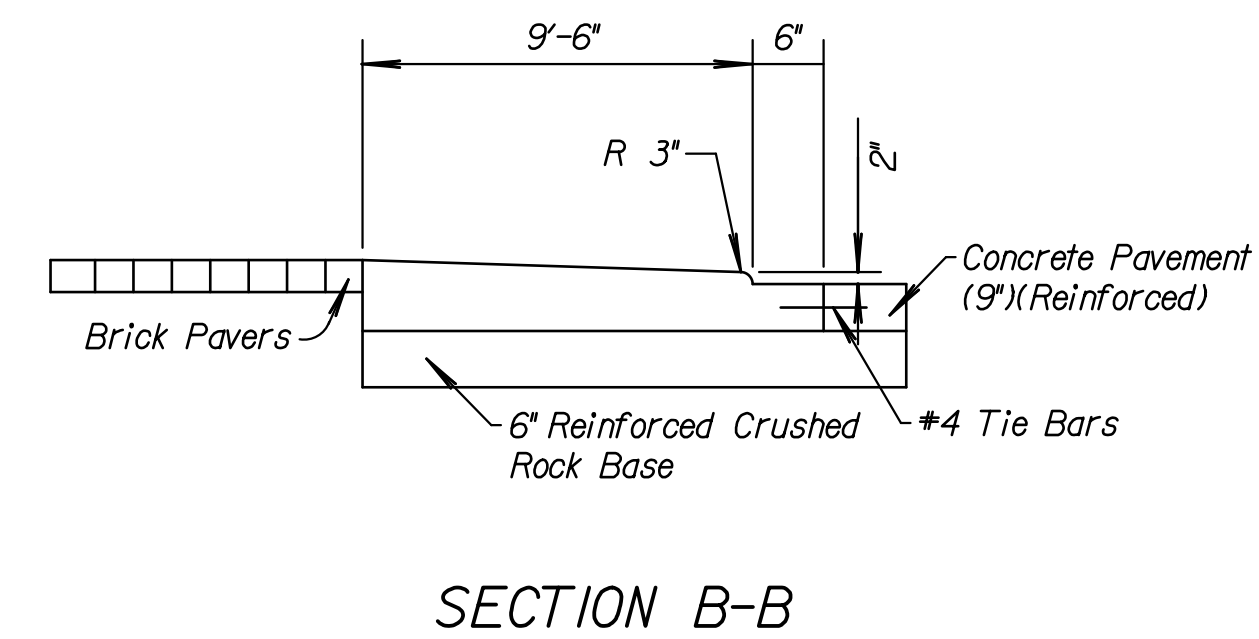
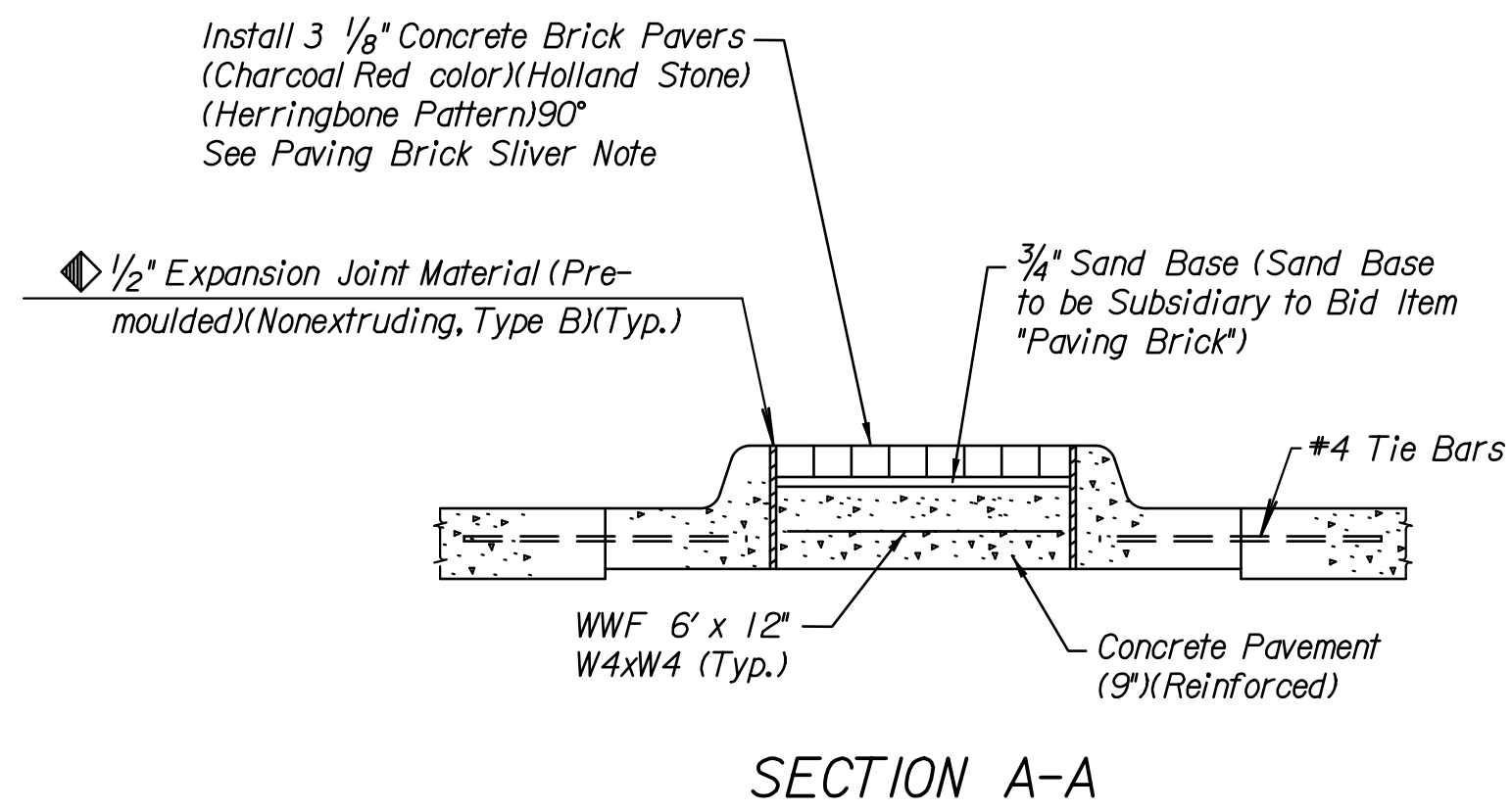
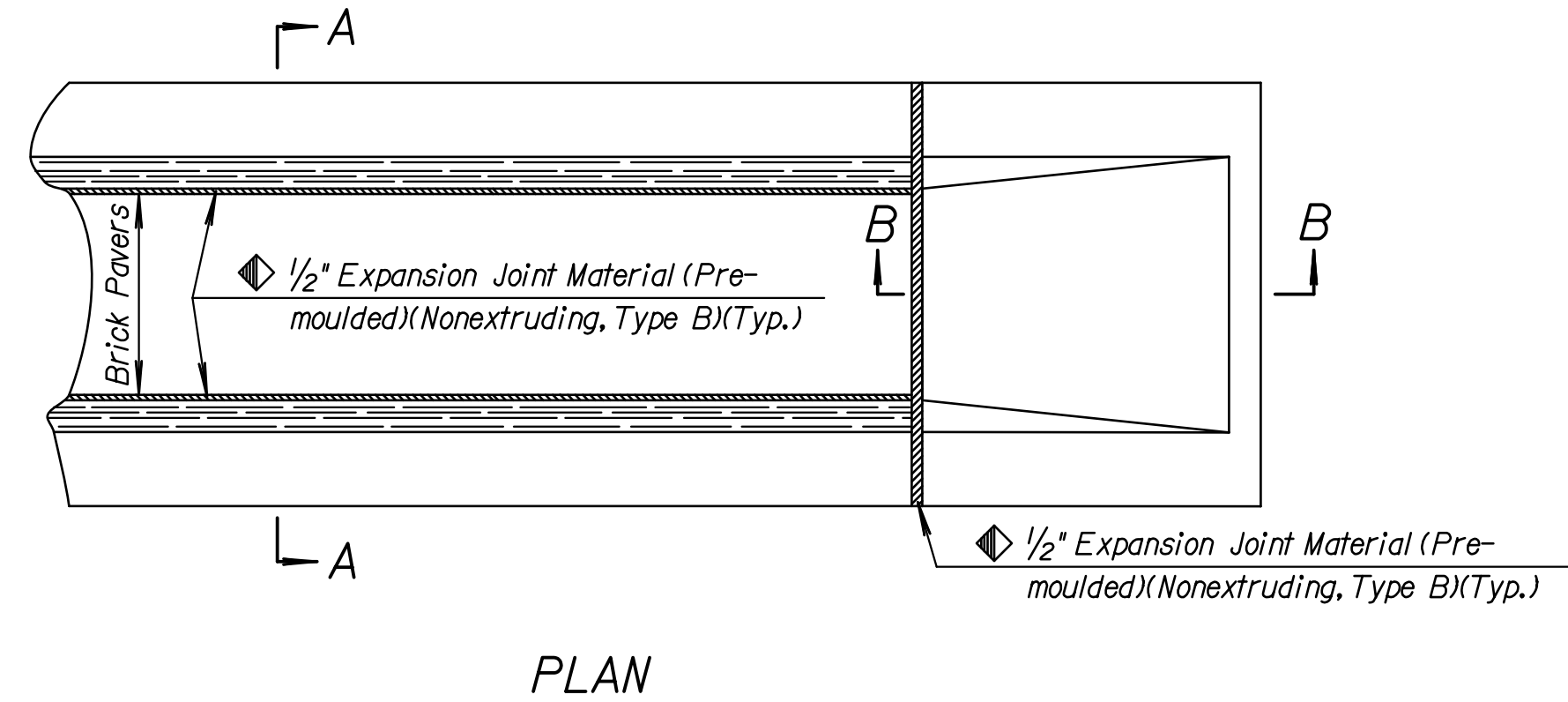


REVISIONS:	MARK	DATE	DESCRIPTION

PROJ NO: 87 N-0614-01  
 SCALE: N/A  
 DATE: 5/26/2017  
 DESIGNED BY: TAU  
 DRAWN BY: TAU  
 CHECKED BY: MDB

SHEET TITLE:  
**RAISED MEDIAN & MEDIAN NOSE DETAILS**

SHEET NO.  
**65**  
 SHEET 65 OF 236



Install 3 1/8" Concrete Brick Pavers (Charcoal Red color)(Holland Stone) (Herringbone Pattern)90° See Paving Brick Sliver Note

1/2" Expansion Joint Material (Pre-moulded)(Nonextruding, Type B)(Typ.)

3/4" Sand Base (Sand Base to be Subsidiary to Bid Item "Paving Brick")

#4 Tie Bars

WWF 6' x 12' W4xW4 (Typ.)

Concrete Pavement (9")(Reinforced)

9'-6"

6"

R 3"

1/2"

Concrete Pavement (9")(Reinforced)

Brick Pavers

6" Reinforced Crushed Rock Base #4 Tie Bars

Note:  
 Expansion joints shall be placed in concrete median as follows. In long runs expansion joints shall be 1\*2" expansion joint material (Nonextruding, Type B) flush with the surface. Expansion joints in the median shall match expansion joints in the curb and gutter with a maximum spacing of 125'. Plane of weakness in median shall match plane of weakness in curb & gutter.

The concrete ramp nose shall be paid for by the bid item "Concrete Ramp Nose Section (Median)".

Paving Brick Sliver Note

Brick Pavers to be installed in crosswalk and/or median locations shall be custom cut to match final concrete dimensions. Contractor shall construct crosswalk blockouts to match nominal paver width dimensions. Fill in with "brick slivers" (defined as pieces smaller than 1/2 of the shortest paver dimension) shall not be allowed, except at the end of crosswalk locations.