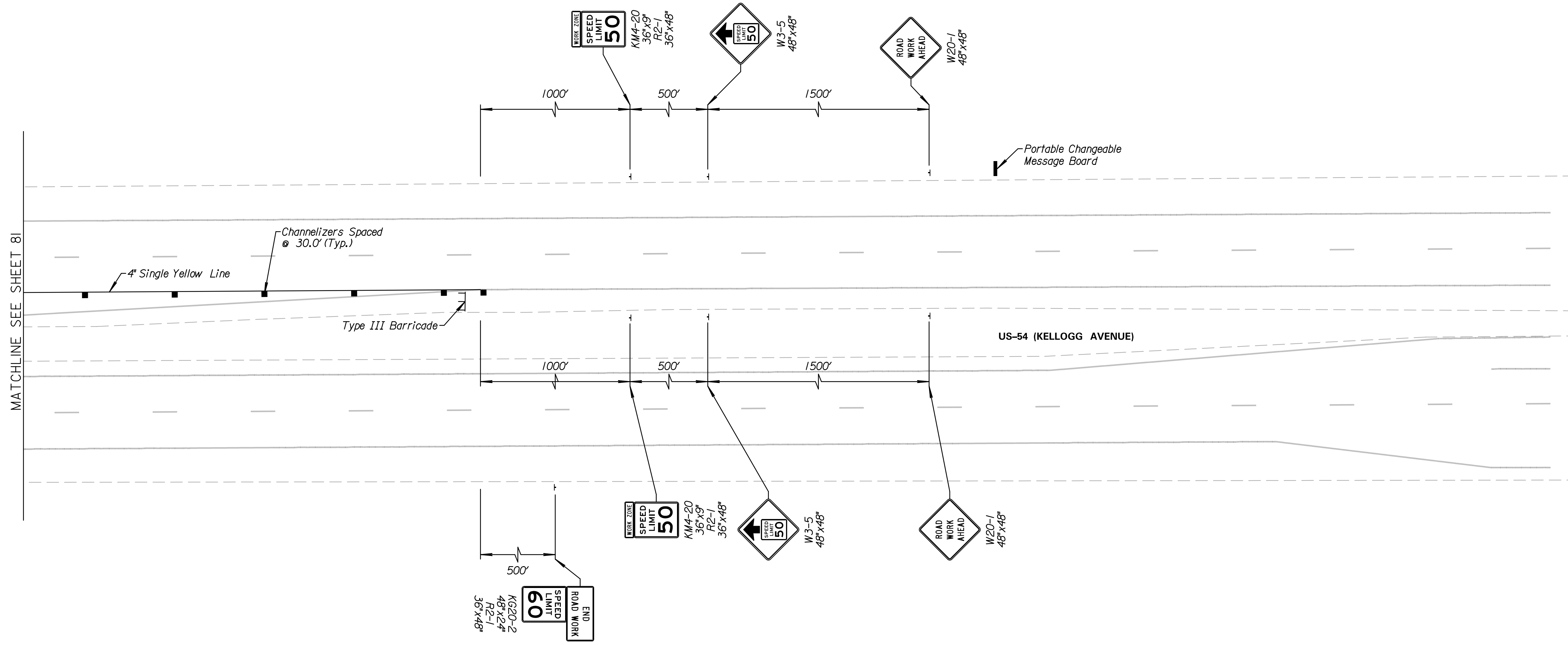
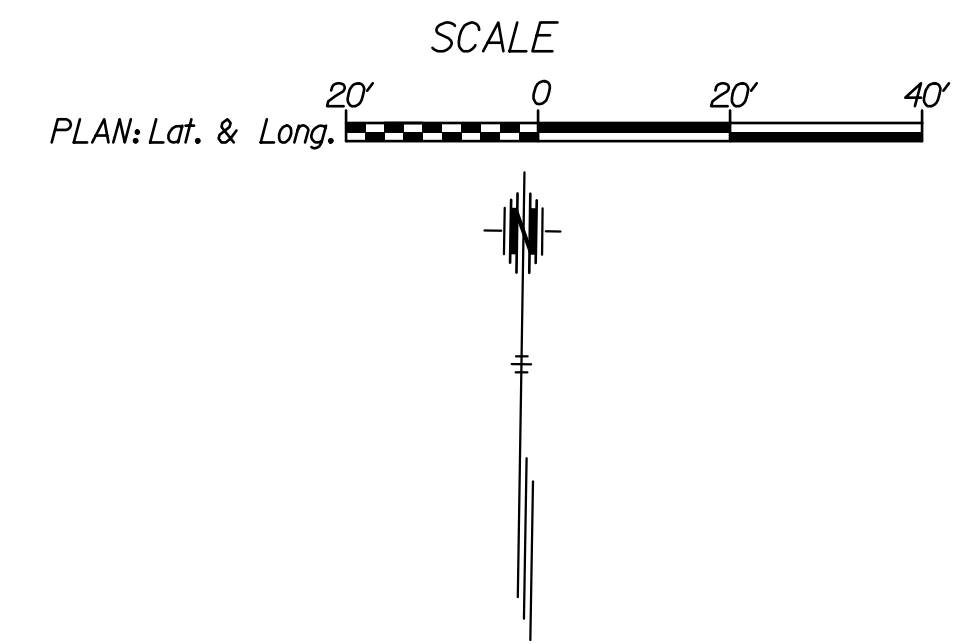


LEGEND

- Phase 1B
- Single Post/Skid Mounted Sign
- Channelizer
- Tubular Marker (36")
- Type III Barricade
- Type III Barricade w/ Sign
- Portable Changeable Message Board
- Pavement Marking Removal

Note:
 One (1) week prior to construction starting, Contractor shall position a portable changeable message board at a location determined by the Engineer to warn travellers that the left turn movement at the intersection of 143rd Street and US-54 (Kellogg Avenue) shall be restricted during construction.

When construction commences the portable changeable message board shall warn traffic that no left turn movement is allowed at the intersection of 143rd Street and US-54 (Kellogg Avenue). The message shall be determined by the Engineer unless otherwise noted on the plans.



MATCHLINE SEE SHEET 81

Tran Systems
 245 NORTH WACO
 SUITE 222
 WICHITA, KANSAS 67202
 PHONE: 316-303-3000
 FAX: 316-462-5629

CONSULTANTS:

143RD STREET IMPROVEMENTS
 WICHITA, KANSAS

REVISIONS:	MARK	DATE	DESCRIPTION

PROJ NO: 87 N-0614-01
 SCALE: 1"=20'
 DATE: 5/26/2017
 DESIGNED BY: TAU
 DRAWN BY: TAU
 CHECKED BY: MDB

SHEET TITLE:
**143RD STREET IMPROVEMENTS
 TRAFFIC CONTROL
 PHASE 1B**

SHEET NO.
82