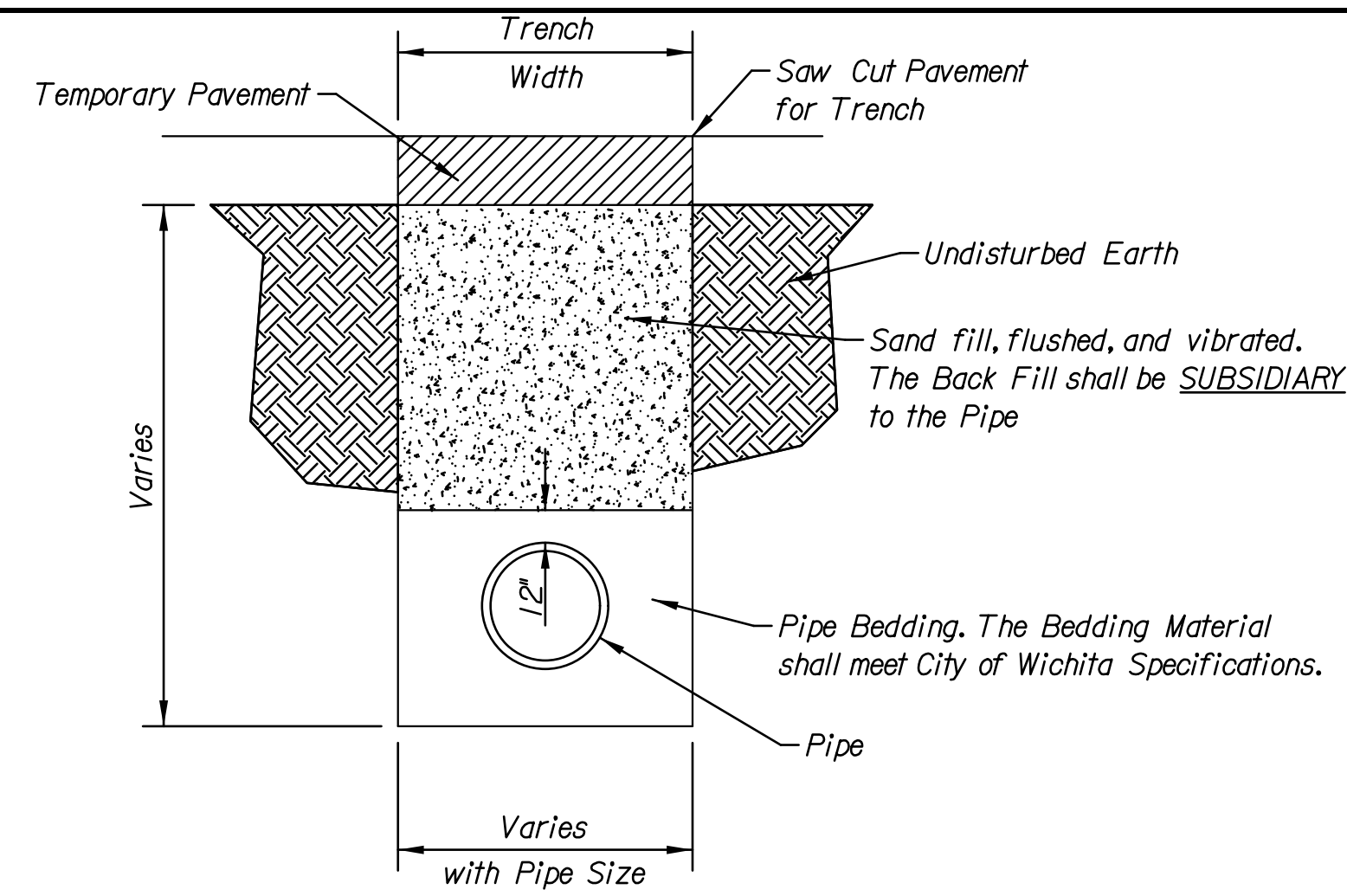


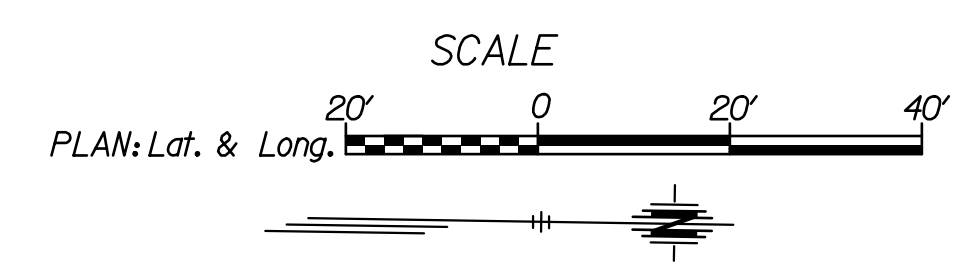
5/26/2017 11:11:17 AM c:\tran\systems\paw_bocall\transys\paw\taummed\0228400C-CPP-M01-103.DGN

- LEGEND**
- Phase 2
 - Temporary Asphalt Widening
 - Single Post/Skid Mounted Sign
 - Channelizer
 - Tubular Marker (36")
 - Type III Barricade
 - Type III Barricade w/ Sign
 - Portable Changeable Message Board
 - Pavement Marking Removal



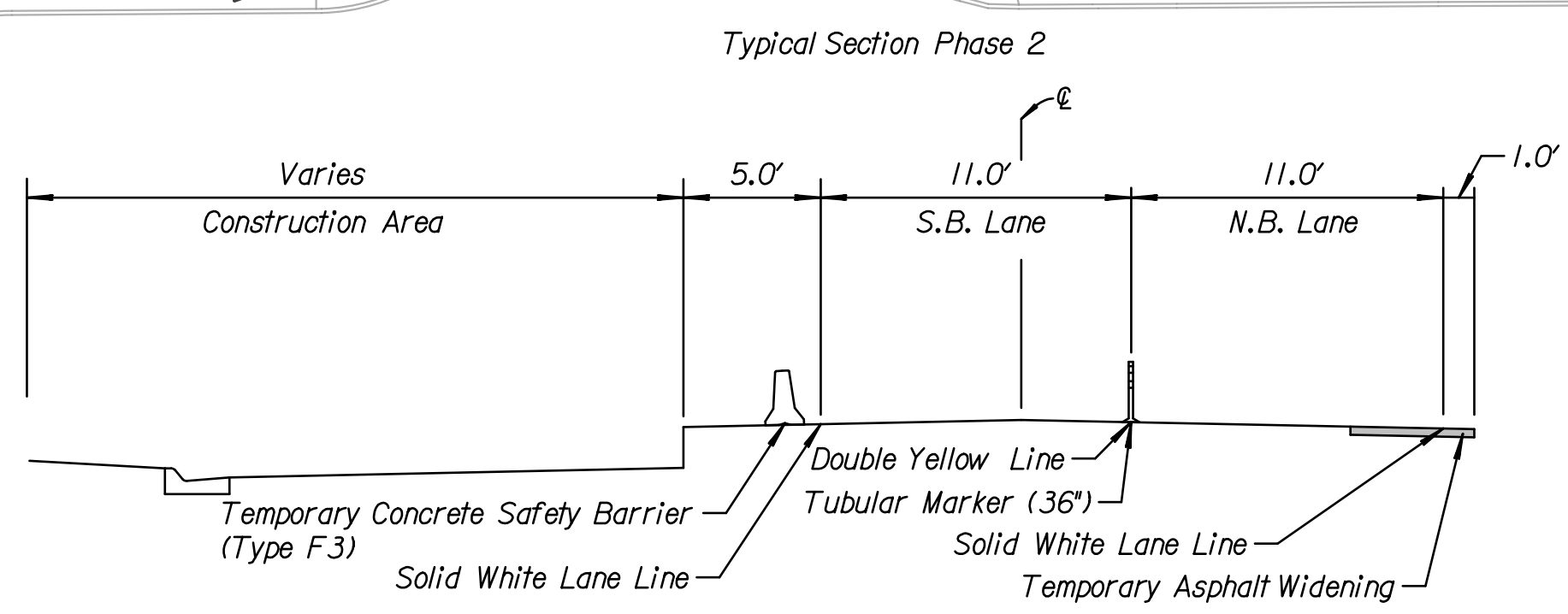
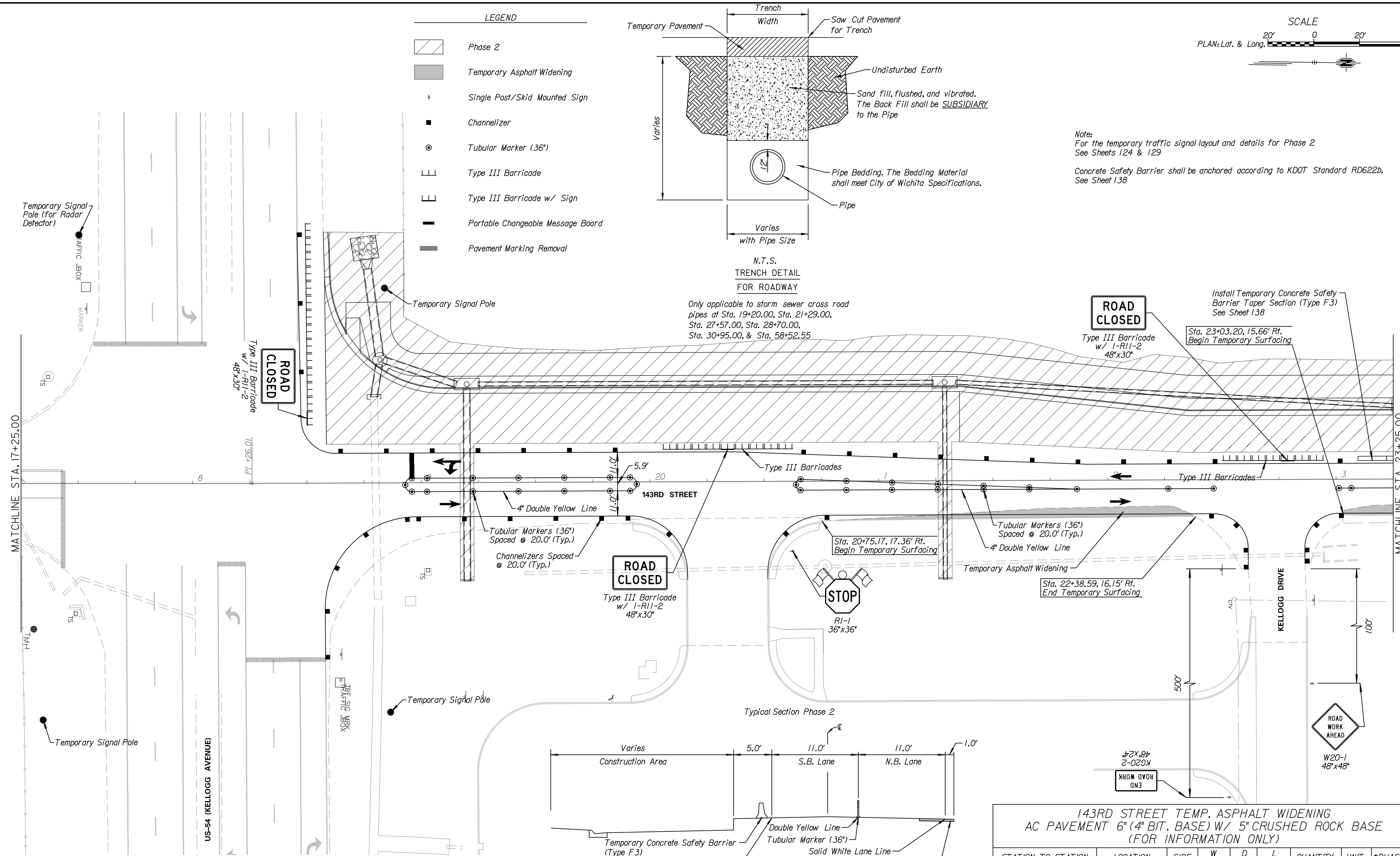
N.T.S.
TRENCH DETAIL
FOR ROADWAY

Only applicable to storm sewer cross road pipes at Sta. 19+20.00, Sta. 21+29.00, Sta. 27+57.00, Sta. 28+70.00, Sta. 30+95.00, & Sta. 58+52.55



Note:
For the temporary traffic signal layout and details for Phase 2 See Sheets 124 & 129

Concrete Safety Barrier shall be anchored according to KDOT Standard RD622b, See Sheet 138



**143RD STREET TEMP. ASPHALT WIDENING
AC PAVEMENT 6" (4" BIT. BASE) W/ 5" CRUSHED ROCK BASE
(FOR INFORMATION ONLY)**

STATION TO STATION	LOCATION	SIDE	W (FT)	D (IN)	L (FT)	QUANTITY	UNIT	PHASE
12+53.48 - 17+08.14	143RD STREET	LT.	VARIES	6.0	454.7	320.7	S.Y.	3
18+77.74 - 20+96.86	143RD STREET	LT.	6.0	6.0	219.2	146.1	S.Y.	3
18+77.74 - 20+96.86	143RD STREET	RT.	6.0	6.0	219.2	146.1	S.Y.	4
20+75.17 - 22+38.59	143RD STREET	RT.	VARIES	6.0	163.4	56.0	S.Y.	2
23+03.20 - 27+61.19	143RD STREET	RT.	VARIES	6.0	458.0	205.9	S.Y.	2
28+66.94 - 40+96.50	143RD STREET	RT.	VARIES	6.0	1229.6	512.2	S.Y.	2
41+97.22 - 49+68.18	143RD STREET	RT.	VARIES	6.0	771.0	325.9	S.Y.	2
50+41.17 - 55+90.45	143RD STREET	RT.	VARIES	6.0	549.3	227.7	S.Y.	2

*Represents the phase the temporary asphalt surfacing is constructed in.

Tran Systems
245 NORTH WACO
SUITE 222
WICHITA, KANSAS 67202
PHONE: 316-303-3000
FAX: 316-462-5629

CONSULTANTS:

143RD STREET IMPROVEMENTS
WICHITA, KANSAS
CITY OF WICHITA

REVISIONS:	MARK	DATE	DESCRIPTION

PROJ NO: 87 N-0614-01
SCALE: 1"=20'
DATE: 5/26/2017
DESIGNED BY: TAU
DRAWN BY: TAU
CHECKED BY: MDB

SHEET TITLE:
**143RD STREET IMPROVEMENTS
TRAFFIC CONTROL
PHASE 2**

SHEET NO.
84
SHEET 84 OF 236