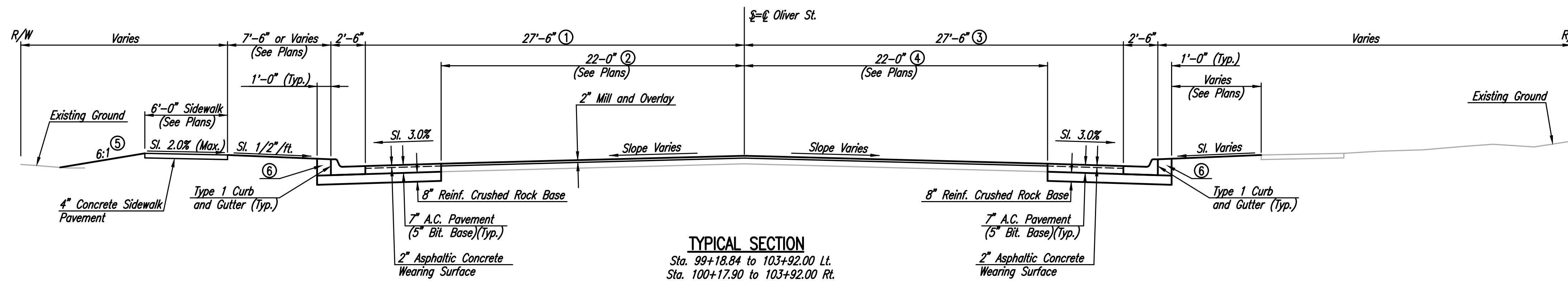
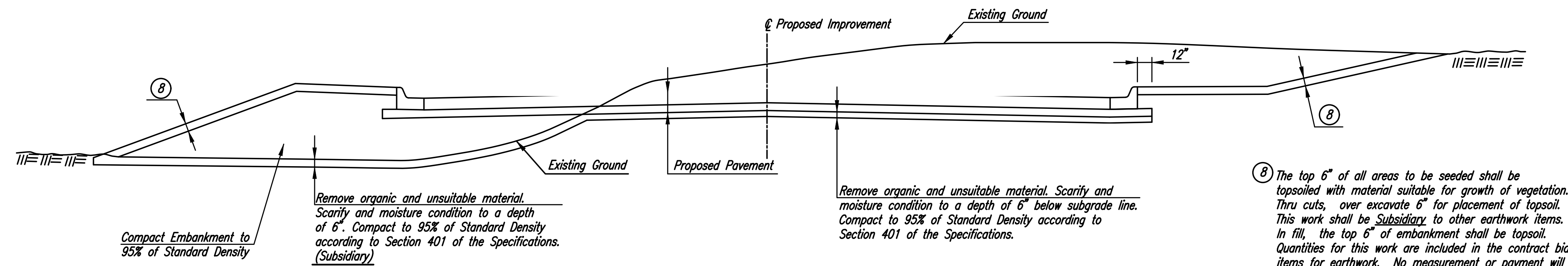


**TYPICAL SECTION**  
Sta. 98+71.87 to 99+18.84 Lt.  
Sta. 98+71.87 to 100+17.96 Rt.

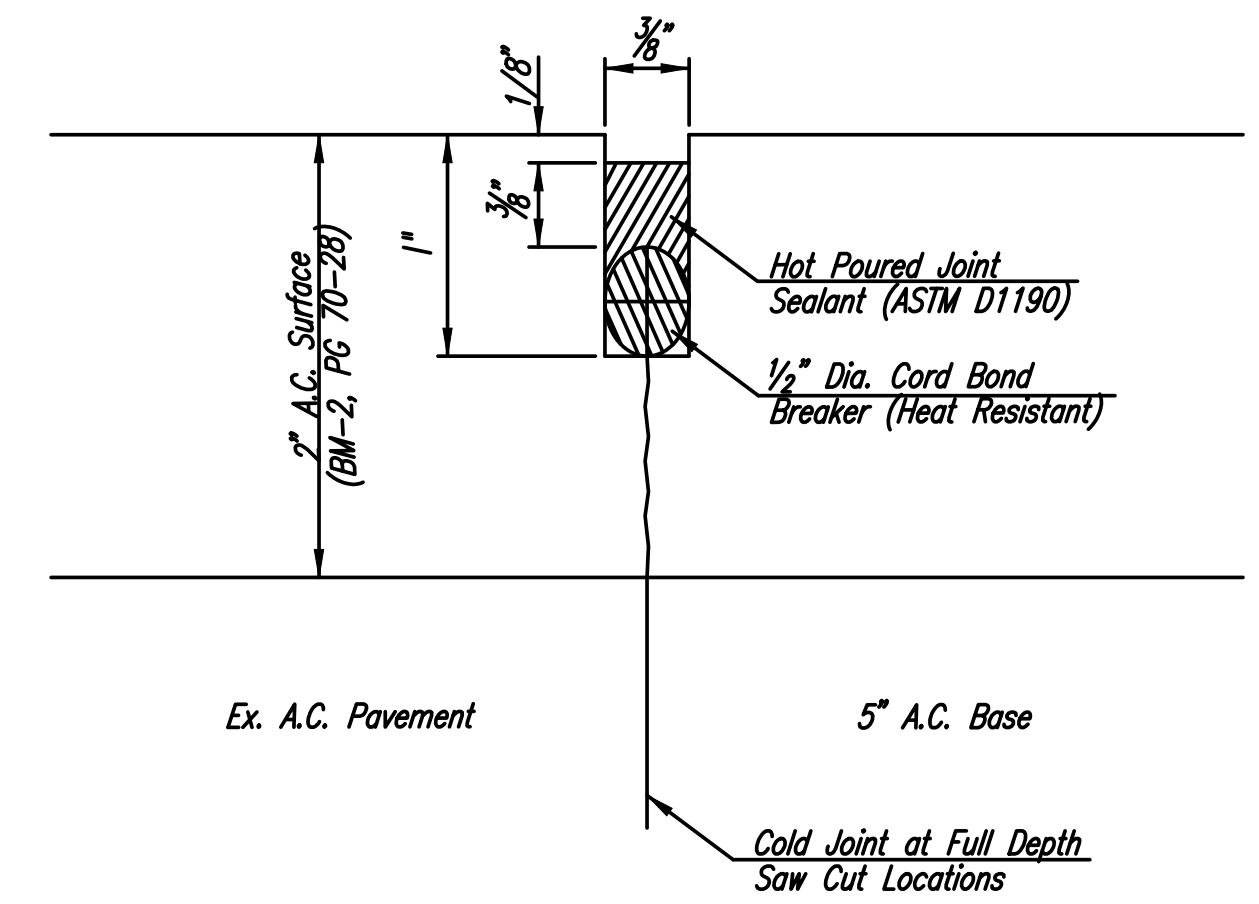


**TYPICAL SECTION**  
Sta. 99+18.84 to 103+92.00 Lt.  
Sta. 100+17.90 to 103+92.00 Rt.



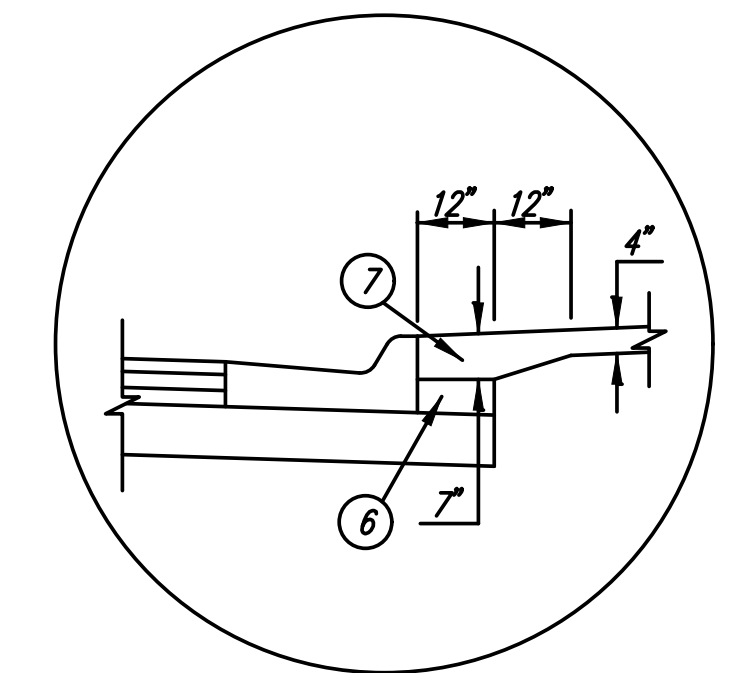
**COMPACTION DIAGRAM**

Note: All embankment, including sideroads and driveways shall be compacted.



**SAW & SEAL DETAIL**  
(For A.C. Pavement)

NOTE: After final surfacing, the Contractor shall saw & seal the A.C. Surface Course along all locations where the existing pavement is being widened. All costs associated with this work shall be considered **SUBSIDIARY** to the Measured Quantity Bid Item "Saw & Seal Joints".



**CONCRETE SIDEWALK THICKENED EDGE DETAIL**  
Required when edge of sidewalk is within 12" from back of curb.

- ① Varies from 27'-6" at Sta. 102+42.00 to 22'-0" at Sta. 103+92.00
- ② Varies from 27'-0" at Sta. 99+18.84 to 22'-0" at Sta. 101+00.00
- ③ Varies from 27'-6" at Sta. 102+42.00 to 23'-4" at Sta. 103+92.00
- ④ Varies from 28'-0" at Sta. 100+17.96 to 24'-0" at Sta. 100+50.00  
Varies from 24'-0" at Sta. 100+50.00 to 22'-0" at Sta. 101+00.00
- ⑤ Varies from 6:1 at Sta. 101+25.00 to 4:1 at Sta. 101+75.00  
Varies from 4:1 at Sta. 102+00.00 to 6:1 at Sta. 102+50.00
- ⑥ Backfill behind curb. Quantities for this work are included in the Earthwork Summary Table.
- ⑦ The additional thickness of concrete sidewalk will not be paid for directly but is considered **SUBSIDIARY** to the Measured Quantity Bid Item "Concrete Sidewalk 4"

⑧ The top 6" of all areas to be seeded shall be topsoiled with material suitable for growth of vegetation. Thru cuts, over excavate 6" for placement of topsoil. This work shall be **SUBSIDIARY** to other earthwork items. In fill, the top 6" of embankment shall be topsoil. Quantities for this work are included in the contract bid items for earthwork. No measurement or payment will be made for material required to replace material excavated during stripping operations.

No.	Revision	By	Date
35TH STREET NORTH AND OLIVER STREET TRAFFIC SIGNALIZATION			
<b>TYPICAL SECTION</b>			
GARY JANZEN, P.E. - CITY ENGINEER CITY OF WICHITA PROJECT NO. 472-85278			
PROFESSIONAL ENGINEERING CONSULTANTS, P.A. 303 SOUTH TOPEKA WICHITA, KS 67202 316-262-2691 www.pec1.com			
Designed by	SAC, BMM	Job No.	31-15954-000
Drawn by	BJS	Date	April 2017
			Sht. 2 of 36