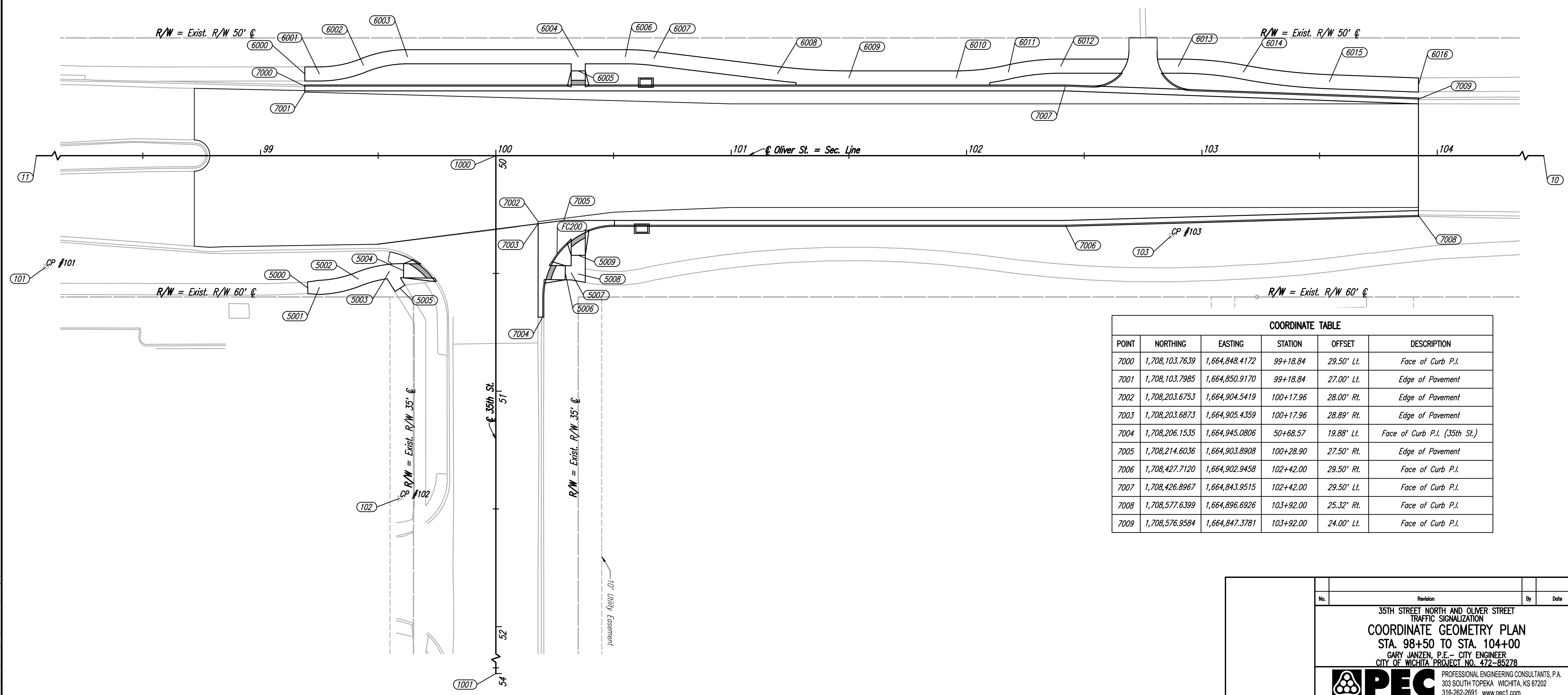




POINT	Δ	R	T	L	E	CURVE DATA							
						P.C. COORDINATES		P.I. COORDINATES		P.T. COORDINATES		C.C. COORDINATES	
						NORTHING	EASTING	NORTHING	EASTING	NORTHING	EASTING	NORTHING	EASTING
FC200	90°00'26"	30.50'	30.50'	47.91'	12.64'	1,708,236.1096	1,664,905.5938	1,708,205.6087	1,664,906.0153	1,708,206.0341	1,664,936.5162	1,708,236.5311	1,664,936.0909

CONTROL POINTS					
POINT	NORTHING	EASTING	STATION	OFFSET	DESCRIPTION
10	1,709,915.1860	1,664,852.8860	117+30.02	0.00' Rt.	NW Cor. Sec. 36-26S-R1E
11	1,707,255.0720	1,664,889.6490	90+69.66	0.00' Rt.	W 1/4 Cor. Sec. 36-T26S-R1E
101	1,707,935.2640	1,664,927.5940	97+49.26	47.34' Rt.	Control Point #1
102	1,708,146.4010	1,665,022.8680	99+59.06	145.52' Rt.	Control Point #2
103	1,708,472.6510	1,664,906.9220	102+86.88	34.10' Rt.	Control Point #3
1000	1,708,185.3275	1,664,876.7928	100+00.00	0.00' Rt.	℄ 35th St.
1001	1,708,191.5795	1,665,329.1835	100+00.00	452.43' Rt.	℄ 35th St.



COORDINATE TABLE					
POINT	NORTHING	EASTING	STATION	OFFSET	DESCRIPTION
7000	1,708,103.7639	1,664,848.4172	99+18.84	29.50' Lt.	Face of Curb P.I.
7001	1,708,103.7985	1,664,850.9170	99+18.84	27.00' Lt.	Edge of Pavement
7002	1,708,203.6753	1,664,904.5419	100+17.96	28.00' Rt.	Edge of Pavement
7003	1,708,203.6873	1,664,905.4359	100+17.96	28.89' Rt.	Edge of Pavement
7004	1,708,206.1535	1,664,945.0806	50+68.57	19.88' Lt.	Face of Curb P.I. (35th St.)
7005	1,708,214.6036	1,664,903.8908	100+28.90	27.50' Rt.	Edge of Pavement
7006	1,708,427.7120	1,664,902.9458	102+42.00	29.50' Rt.	Face of Curb P.I.
7007	1,708,426.8967	1,664,843.9515	102+42.00	29.50' Lt.	Face of Curb P.I.
7008	1,708,577.6399	1,664,896.6926	103+92.00	25.32' Rt.	Face of Curb P.I.
7009	1,708,576.9584	1,664,847.3781	103+92.00	24.00' Lt.	Face of Curb P.I.

Saved: 03-30-2017 8:19:02 AM by CP
 Plot Scale: 1" = 40'-0" (2017) 8:41:34 AM by CP
 U:\Wichita-Civil\2015\15954\Drawings\15954-000-04C-COORDINATE GEOMETRY PLAN

No.	Revision	By	Date
35TH STREET NORTH AND OLIVER STREET TRAFFIC SIGNALIZATION COORDINATE GEOMETRY PLAN STA. 98+50 TO STA. 104+00 GARY JANZEN, P.E. - CITY ENGINEER CITY OF WICHITA PROJECT NO. 472-85278			
		PROFESSIONAL ENGINEERING CONSULTANTS, P.A. 303 SOUTH TOPEKA WICHITA, KS 67202 316-262-2691 www.pec1.com	
Designed by	SAC, BMM	Job No.	31-15954-000
Drawn by	BJS	Date	April 2017
			Sht. 4 of 36