

FHWA REG. NO.	STATE	PROJECT NO.	YEAR	SHEET NO.	TOTAL SHEETS
7	KANSAS	87 N-0203-01	2003	11	48

GENERAL NOTES

Transition Rail and Concrete Pavement shall be paid for as sq. m of Concrete Pavement (260 mm) (Unif.)(AE) and includes all work and materials required to construct the transition rail and slab as shown on this sheet.

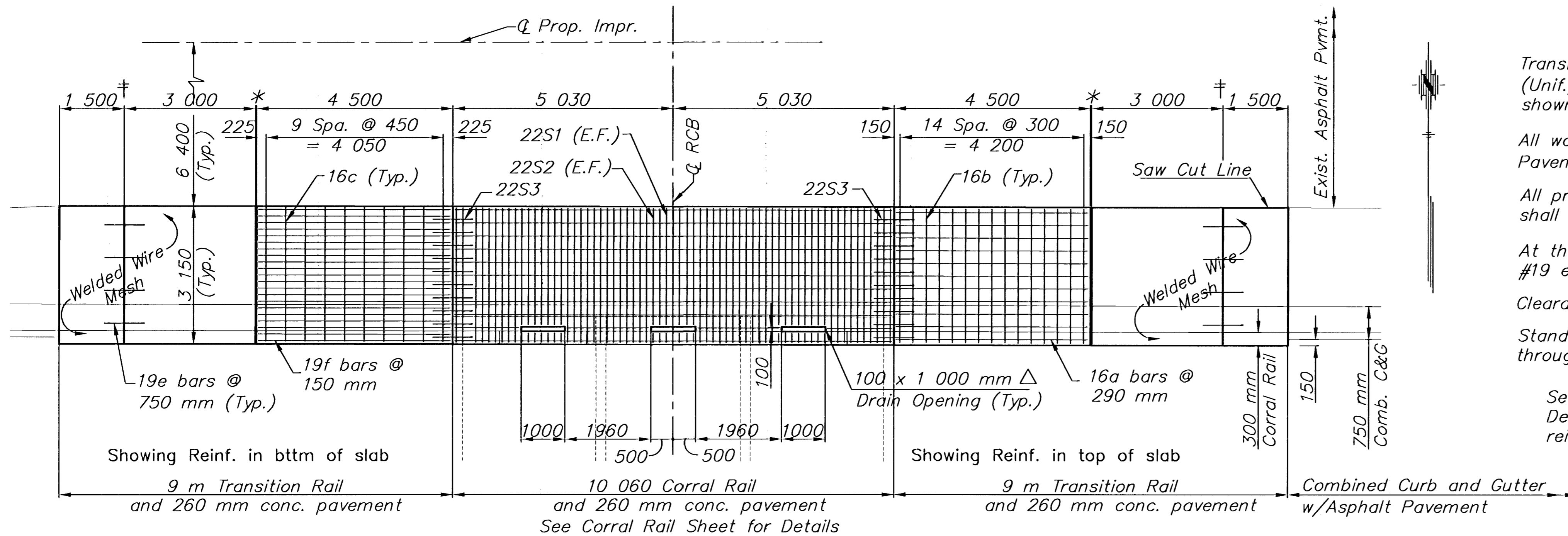
All work and materials required for installation of expansion joints shall be subsidiary to Concrete Pavement (260 mm)(Unif.)(AE).

All preformed joint material shall be installed perpendicular to pavement surface. Formed joints shall be edged with 6 mm radius tool for length of joint.

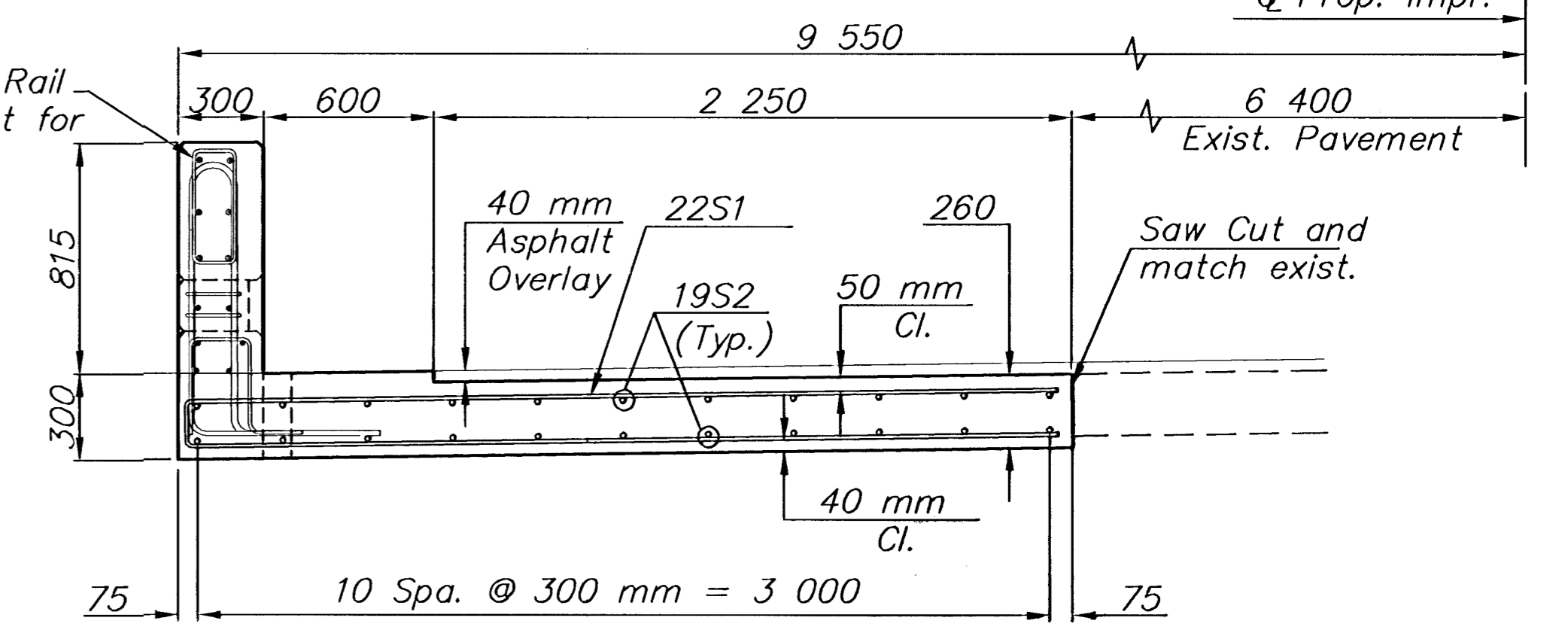
At the Contractor's option #13 x 900 mm tie bars @ 380 mm centers may be substituted for the #19 e bars at 750 mm centers.

Clearance from the face of concrete for all reinforcing steel shall be 50 mm.

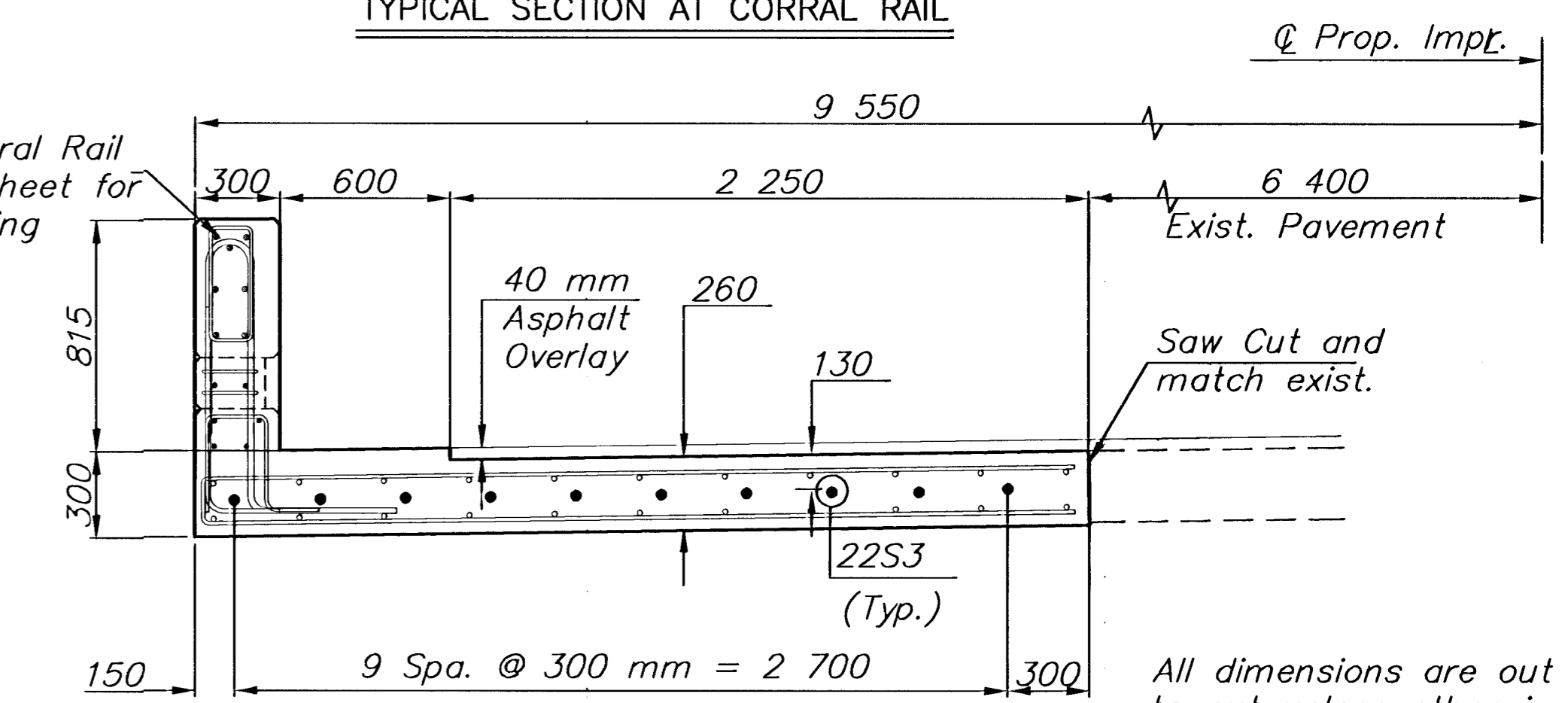
Standard reinforcing bar hooks in accordance with the latest ACI Specifications shall be used throughout.



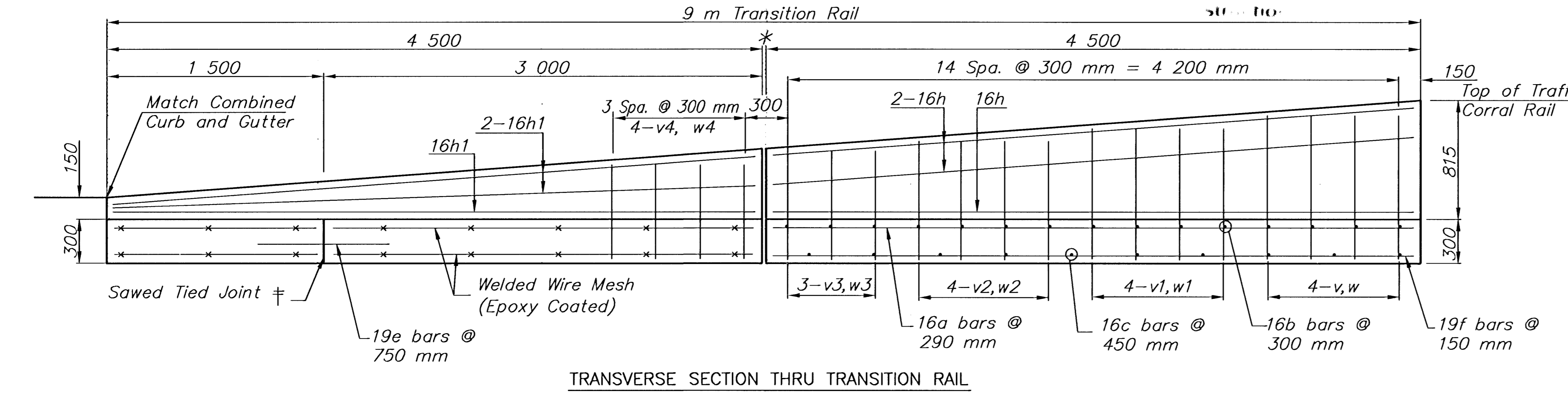
CONCRETE PAVEMENT PLAN - SOUTH SIDE
North side symmetrical about Q Prop. Improvement



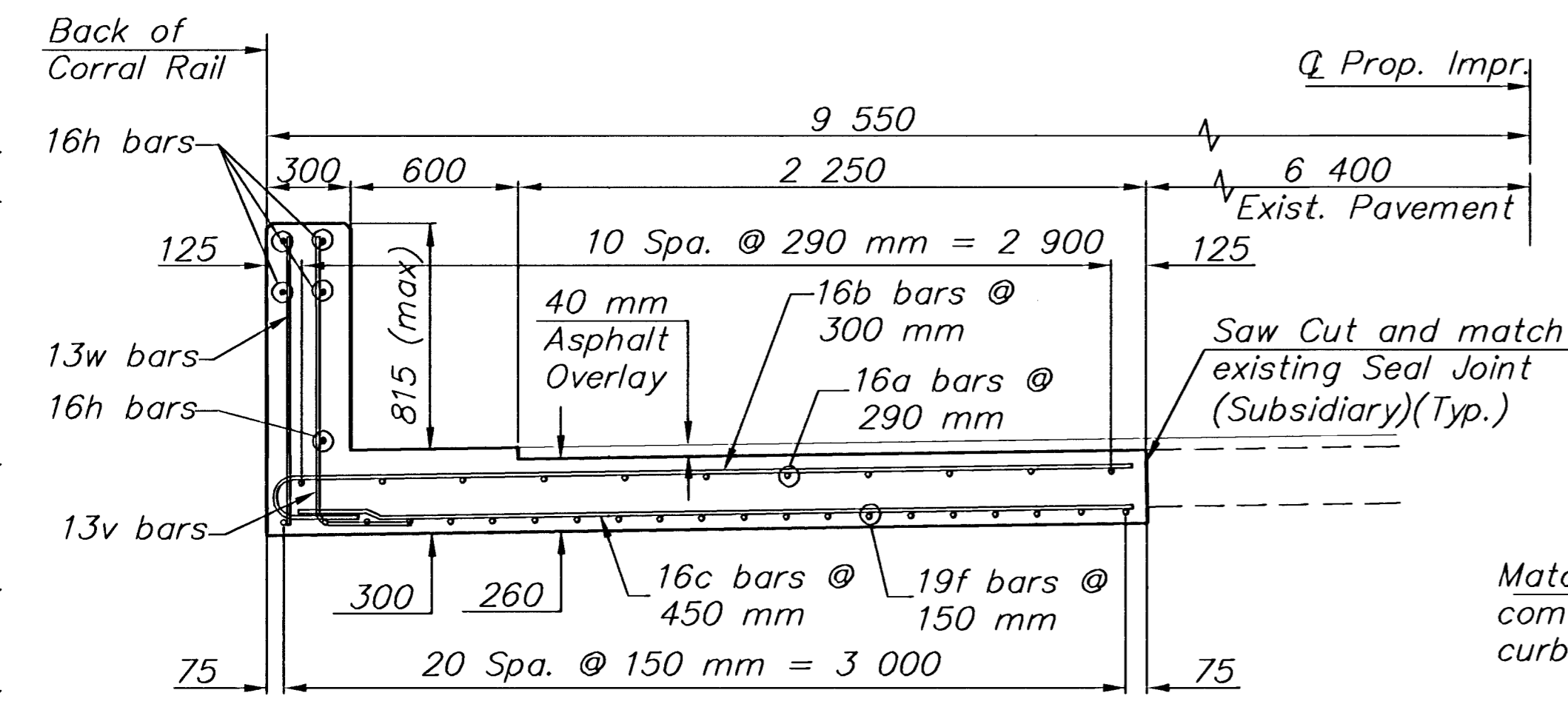
TYPICAL SECTION AT CORRAL RAIL



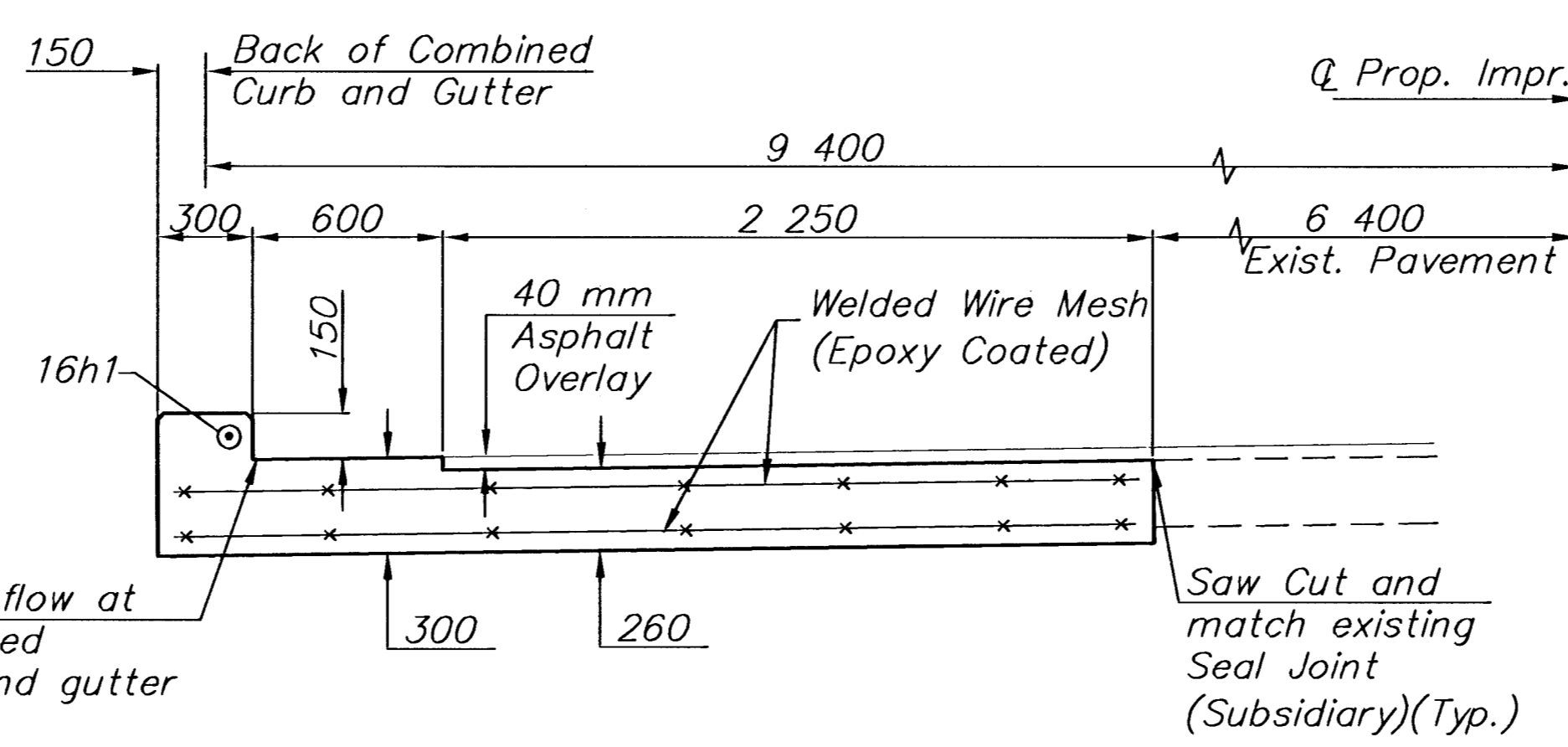
TYPICAL SECTION AT END OF CORRAL RAIL



TRANSVERSE SECTION THRU TRANSITION RAIL



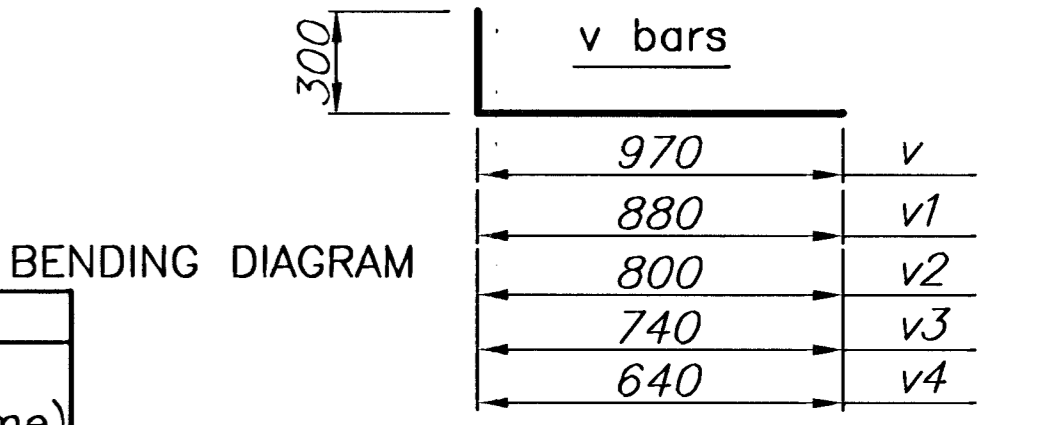
TYPICAL SECTION AT TRANSITION RAIL



TYPICAL SECTION AT END OF TRANSITION RAIL

BILL OF MATERIALS									
Transition Rail and Concrete Pavement									
(For Information Only-South Side)(North Side Same)									
BAR SCHEDULE - EPOXY COATED									
Bar No.	a	b	c	e	f	h	h1		
22	30	20	8	42	10	10			
16	16	22	19	22	16	16			
Length	4400	3310	3000	900	4400	4400	4400		
Bar No.	v	v1	v2	v3	v4	w	w1	w2	w3
8	8	8	6	8	8	8	8	8	6
13	13	13	13	13	13	13	13	13	13
Length	1270	1180	1100	1040	940	970	880	800	740
Reinforcing Steel	1275 kg								
Concrete Pavement (260 mm)(Unif.)(AE)	56.7 sq. m								
Expansion Joint	6.3 m								

See Corral Rail Sheet for Rail and Conc. Pavement Quantities



KANSAS DEPARTMENT OF TRANSPORTATION				
TRANSITION RAIL AND CONCRETE PAVEMENT				
CENTRAL BRIDGE AT TARA				
PROJ. NO. 87 N-0203-01		SEDGWICK CO.		
MKEC ENGINEERING CONSULTANTS, INC.				
WICHITA, KANSAS				
DESIGNED BY: KJS	CHECKED BY: KJS			
DRAWN BY: RSB	DATE: JAN. 2003		SHEET 11 OF 48	

G:\CIVIL\01079\DETAILS\01079SLB.DWG 01/17/03 03:40:44 PM CST