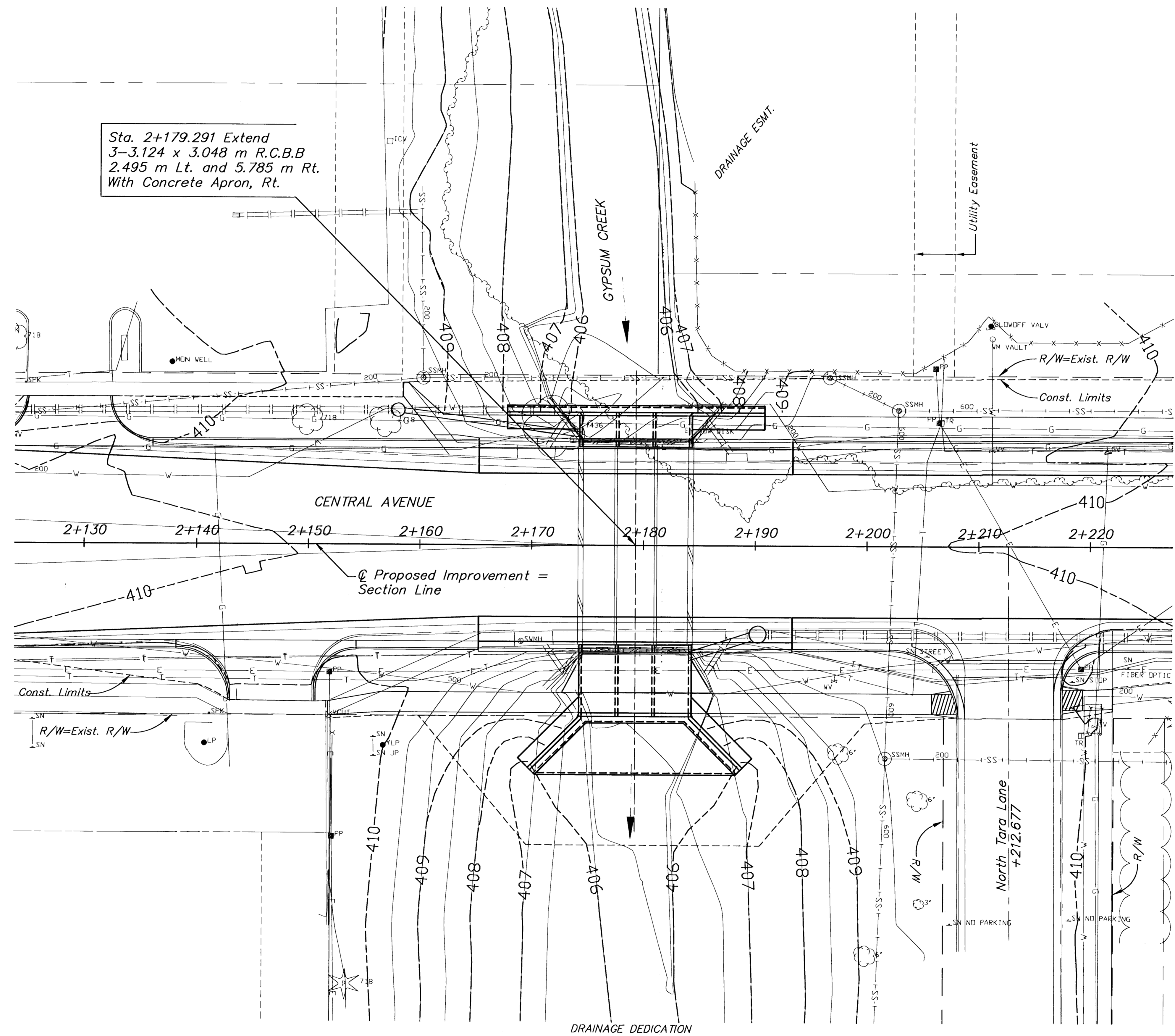
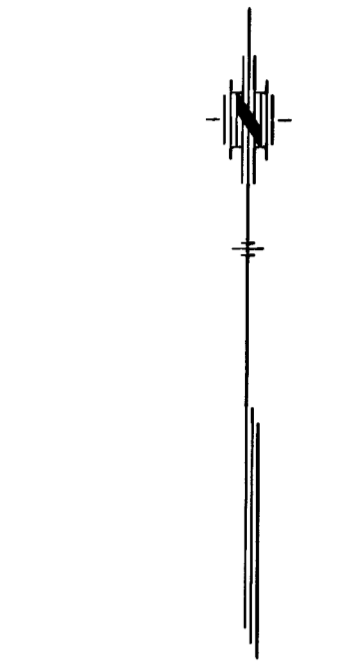


STATE	PROJECT NO.	YEAR	SHEET NO	TOTAL SHEETS
KANSAS	87 N-0203-01	2003	15	48

BY	DATE
REFERENCES NOTED	
REFERENCES CHECKED	

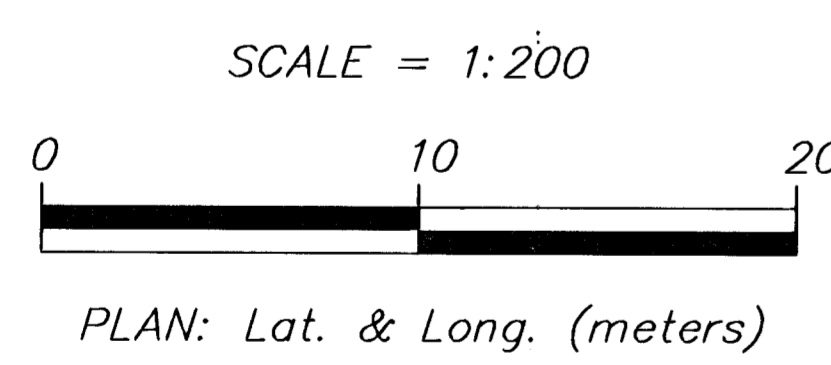


Sta. 2+179.291 Extend  
 3-3.124 x 3.048 m R.C.B.B  
 2.495 m Lt. and 5.785 m Rt.  
 With Concrete Apron, Rt.



**DRAINAGE DATA**

Drainage Area	8.78	km <sup>2</sup>
Design Frequency	100	Yr.
Design Discharge (Qdes)	43.89	m <sup>3</sup> /s
Design High Water Elevation (HW=2.27 m)	408.17	
Overtopping Elevation (Sta.)	409.9	
Overtopping Discharge	69.0	m <sup>3</sup> /s
Overtopping Frequency	500+	Yr.
Historic High Water Elevation	unknown	



**UTILITY OWNERS**

- TV - Cox Communications (316)262-4270
- G - Kansas Gas Service (316) 832-3122
- E - KGE (316) 261-6552
- SS - City of Wichita Water & Sewer Dept. (316) 268-4555
- SWS - City of Wichita Water & Sewer Dept. (316) 268-4555
- T - Southwestern Bell Telephone Co. (316) 268-2245
- W - City of Wichita Water & Sewer Dept. (316) 268-4555

BM RR Spike in NE Face of PP on S. side of Central and 2nd PP E. of Rock Road STA. 2+070.752, 17.202 m South. Elev. = 411.470

BM City of Wichita BM Disk set in NE Cor. of RCBB on Headwall at Tara and Gypsum Creek STA. 2+184.199, 9.323 m North. Elev. = 409.685

BM RR Spike in N. Face of 1st PP E. of North Tara on S. side of Central STA. 2+295.930, 10.310 m South. Elev. = 412.241

2					
1					
NO.	DATE	REVISIONS	BY	APP'D	
KANSAS DEPARTMENT OF TRANSPORTATION					
CONTOUR MAP					
CENTRAL BRIDGE AT TARA					
PROJ. NO. 87 N-0203-01			SEDGWICK CO.		
MKEC ENGINEERING CONSULTANTS, INC. WICHITA, KANSAS					
DESIGNED BY:	KJS	CHECKED BY:	KJS		
DRAWN BY:	RSB	DATE:	JAN. 2003	SHEET 15 OF 48	

G:\CIVIL\01079\PAVE\01079CNCN.DWG 03/09/03 05:00:51 PM CST