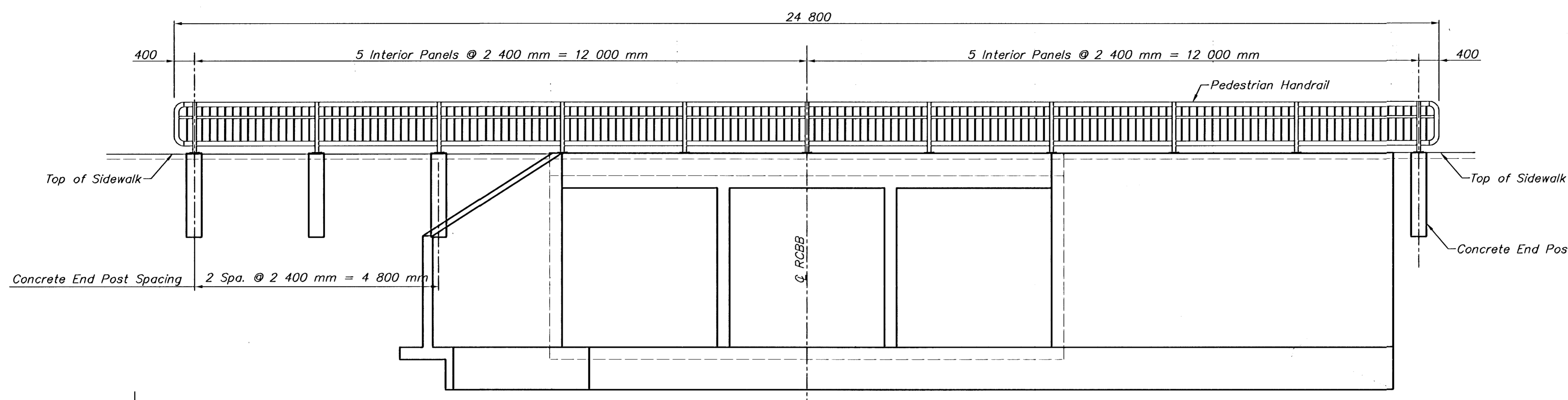


| | | | | |
|--------|--------------|------|----------|--------------|
| STATE | PROJECT NO. | YEAR | SHEET NO | TOTAL SHEETS |
| KANSAS | 87 N-0203-01 | 2003 | 22 | 48 |



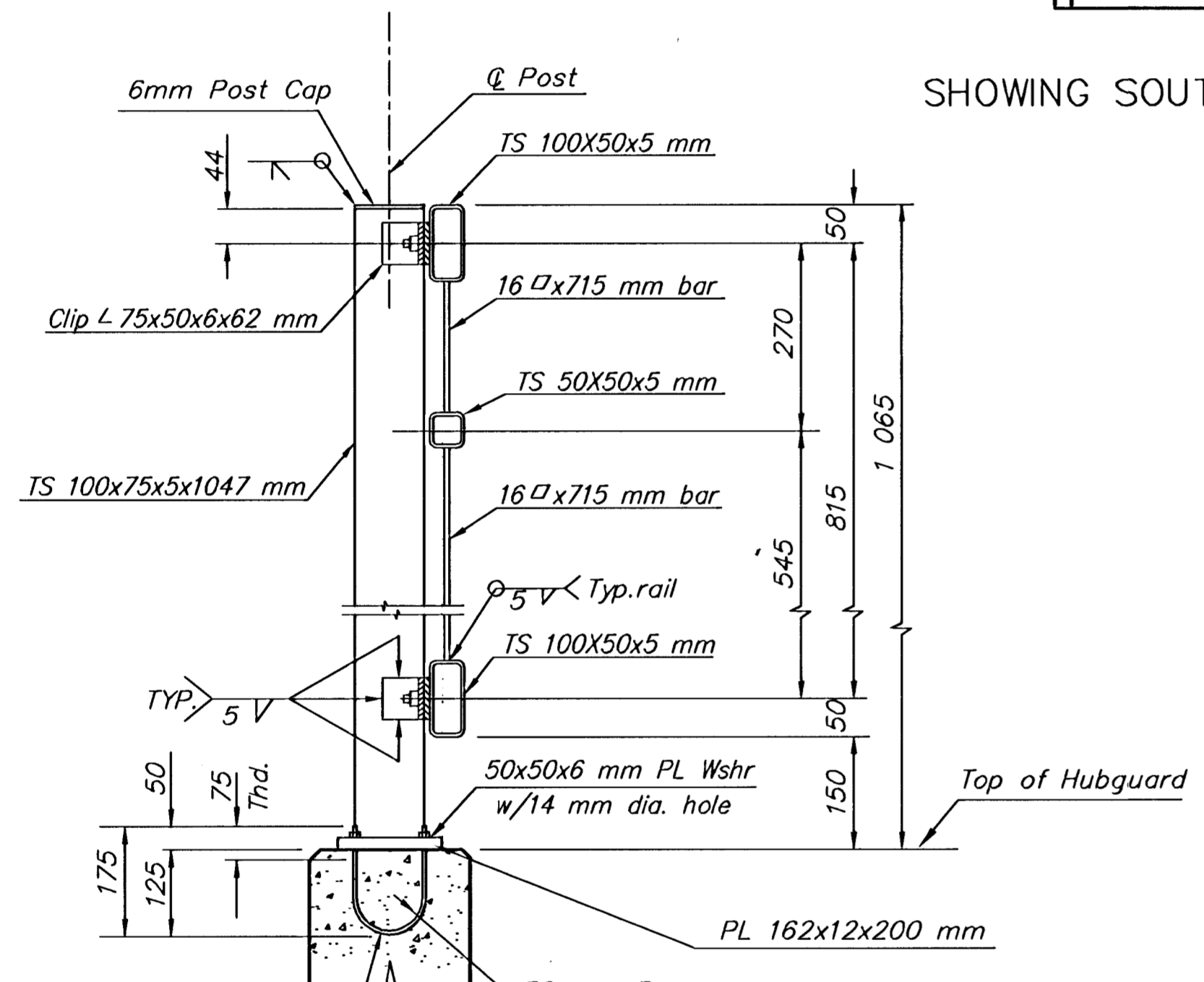
HANDRAIL NOTES

- The rail members shall conform to ASTM Designation A36M or equivalent.
- Rail shall be fabricated in lengths to include a minimum of two and a maximum of three panels. Posts shall be set vertical. Shims may be used between concrete and base plates of posts.
- All parts of handrail shall be painted. The primer coat shall conform to the inorganic zinc system. Surface preparation shall be in accordance with that for structural steel. The finish coat shall be in accordance with water-borne acrylic finish coat. All materials, equipment and labor necessary for the installation of the handrail shall be subsidiary to the bid item.
- The Contractor shall submit color chart for approval by the City. The color shall be "red brick".

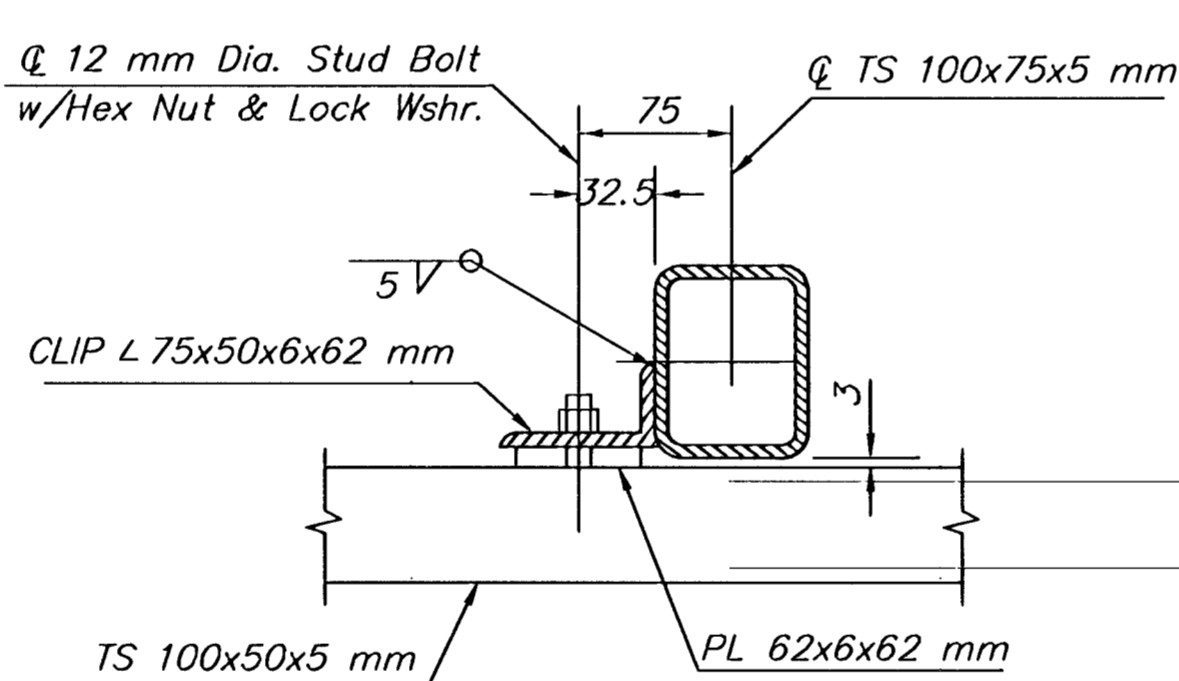
SHOWING SOUTH WINGWALL

SHOWING NORTH WINGWALL

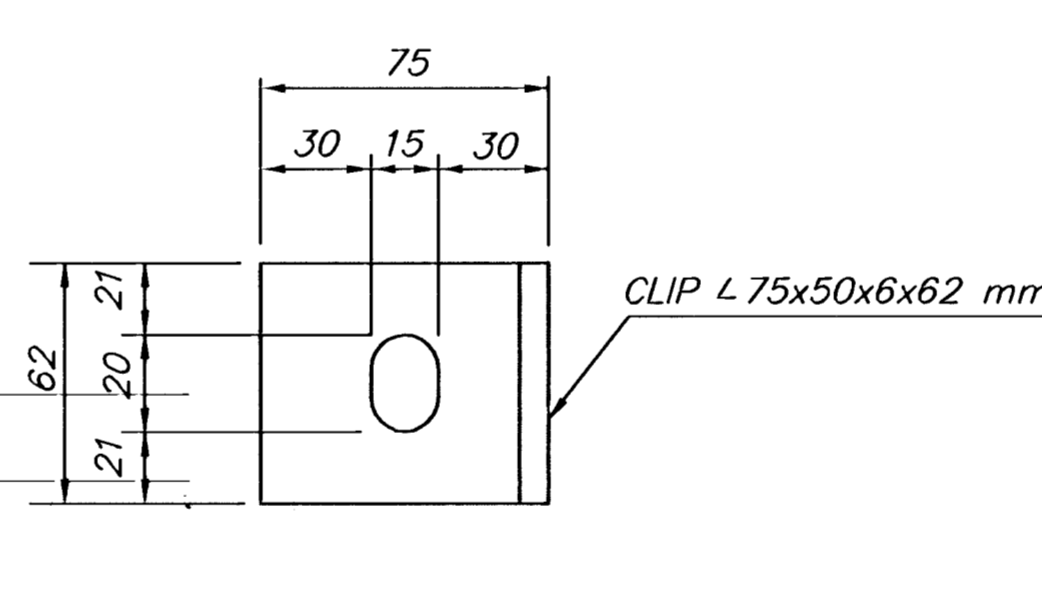
HANDRAIL ELEVATION



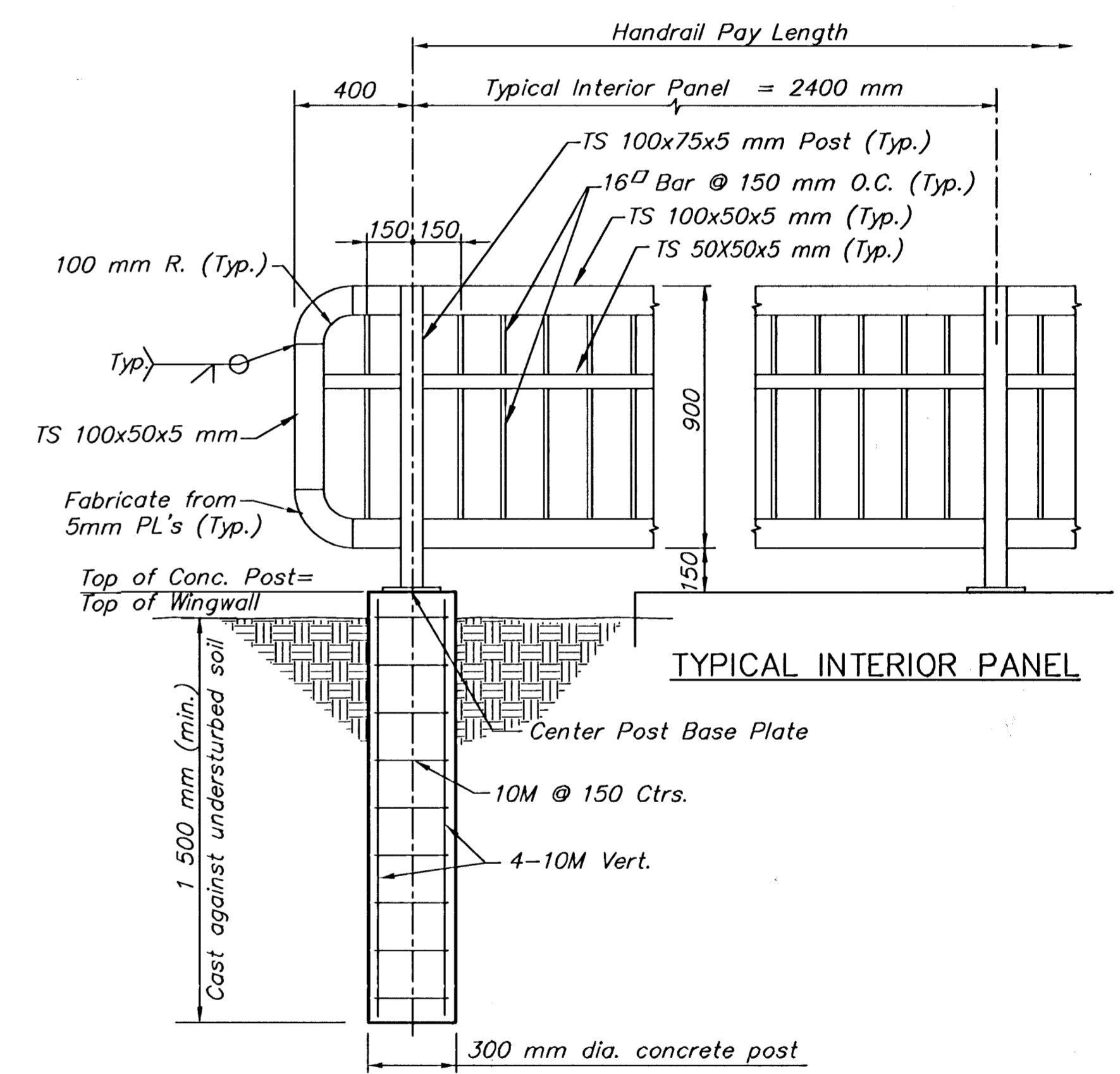
TYPICAL RAIL SECTION



RAIL CONNECTION DETAIL

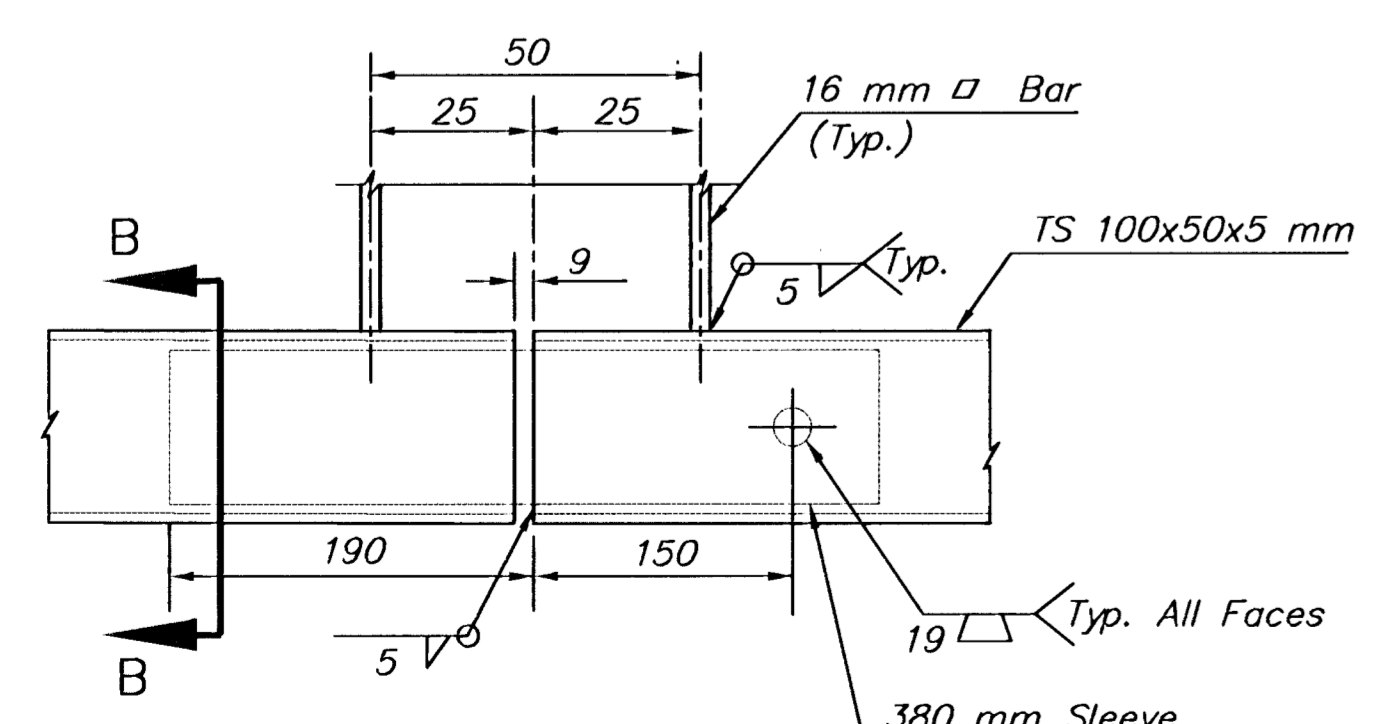


CLIP DETAIL



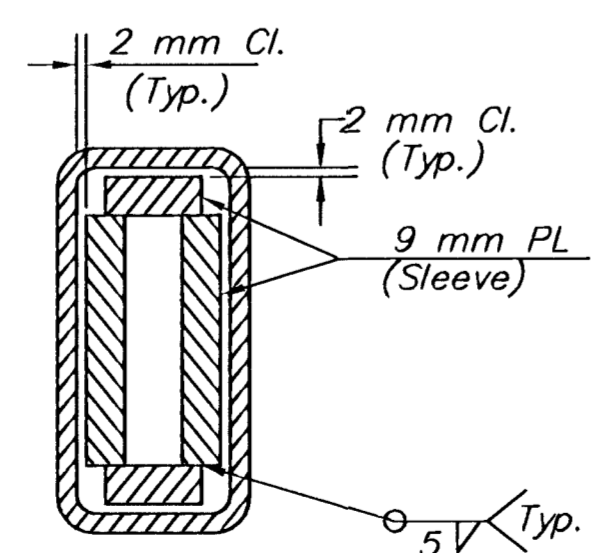
CONCRETE POST DETAIL

Concrete Post shall be subsidiary to "Handrail (Steel)".
Locate concrete post where specified on plans

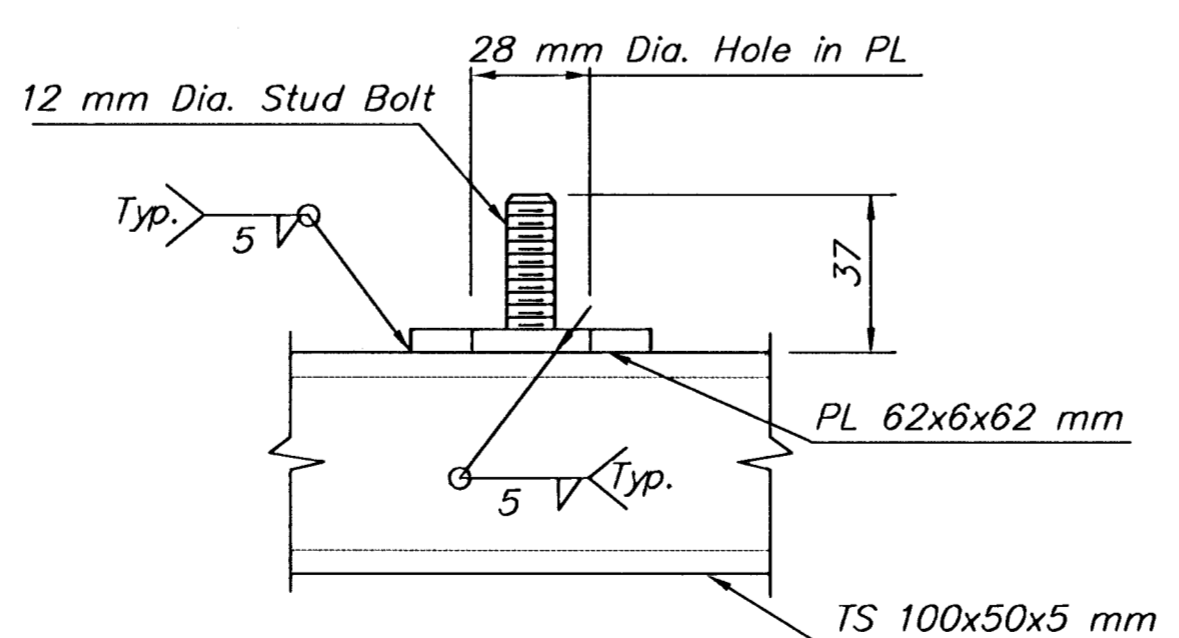


SLEEVE DETAIL

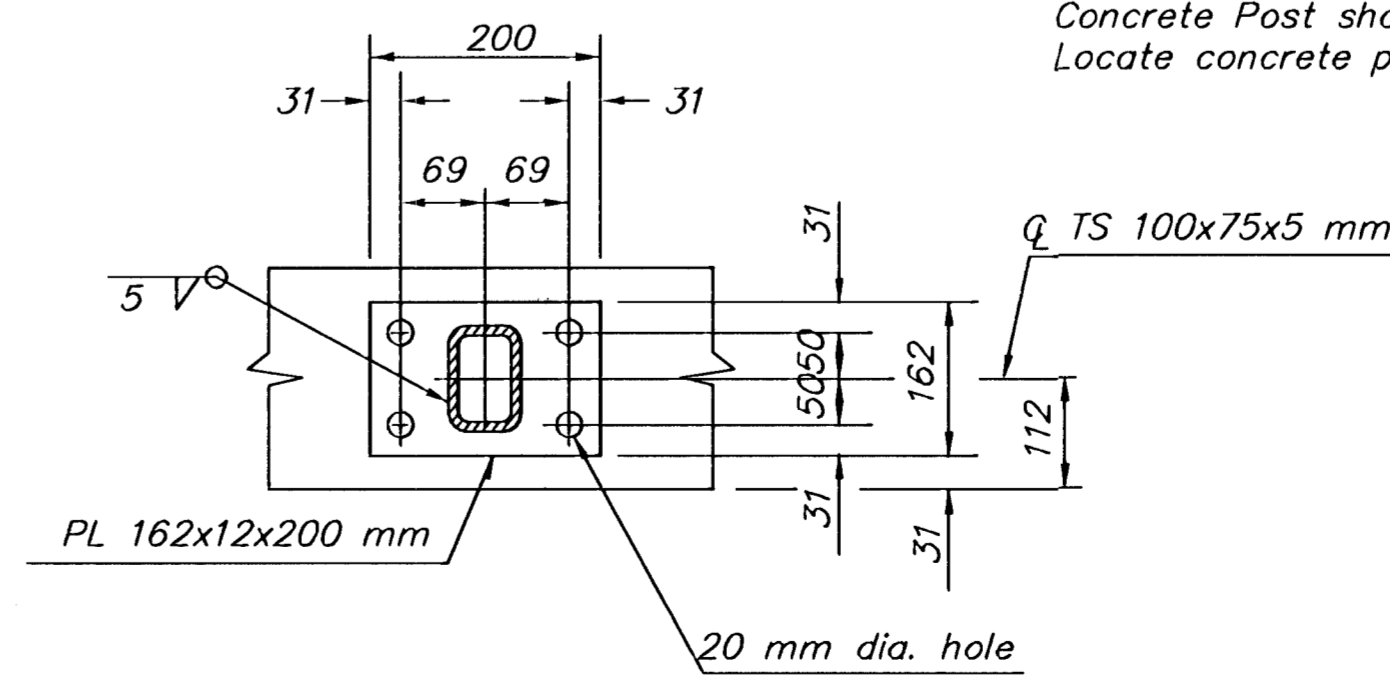
(Bottom Rail Shown, Top Rail Similar)



SECTION B-B



STUD BOLT DETAIL



BASE PLATE DETAIL

| 2 | | | | | |
|-------------------------------------|------|-------------|--------------|----------------|--|
| 1 | | | | | |
| NO. | DATE | REVISIONS | BY | APP'D | |
| KANSAS DEPARTMENT OF TRANSPORTATION | | | | | |
| CENTRAL BRIDGE AT TARA | | | | | |
| HANDRAIL DETAILS | | | | | |
| PROJ. NO. 87 N-0203-01 | | | SEDGWICK CO. | | |
| MKEC ENGINEERING CONSULTANTS, INC. | | | | | |
| WICHITA, KANSAS | | | | | |
| DESIGNED BY: | MDK | CHECKED BY: | PAF | | |
| DRAWN BY: | DPG | DATE: | | SHEET 22 OF 48 | |

G:\VNL\101078\DETAILS\101078.HND.DWG 01/17/03 03:46:07 PM CST