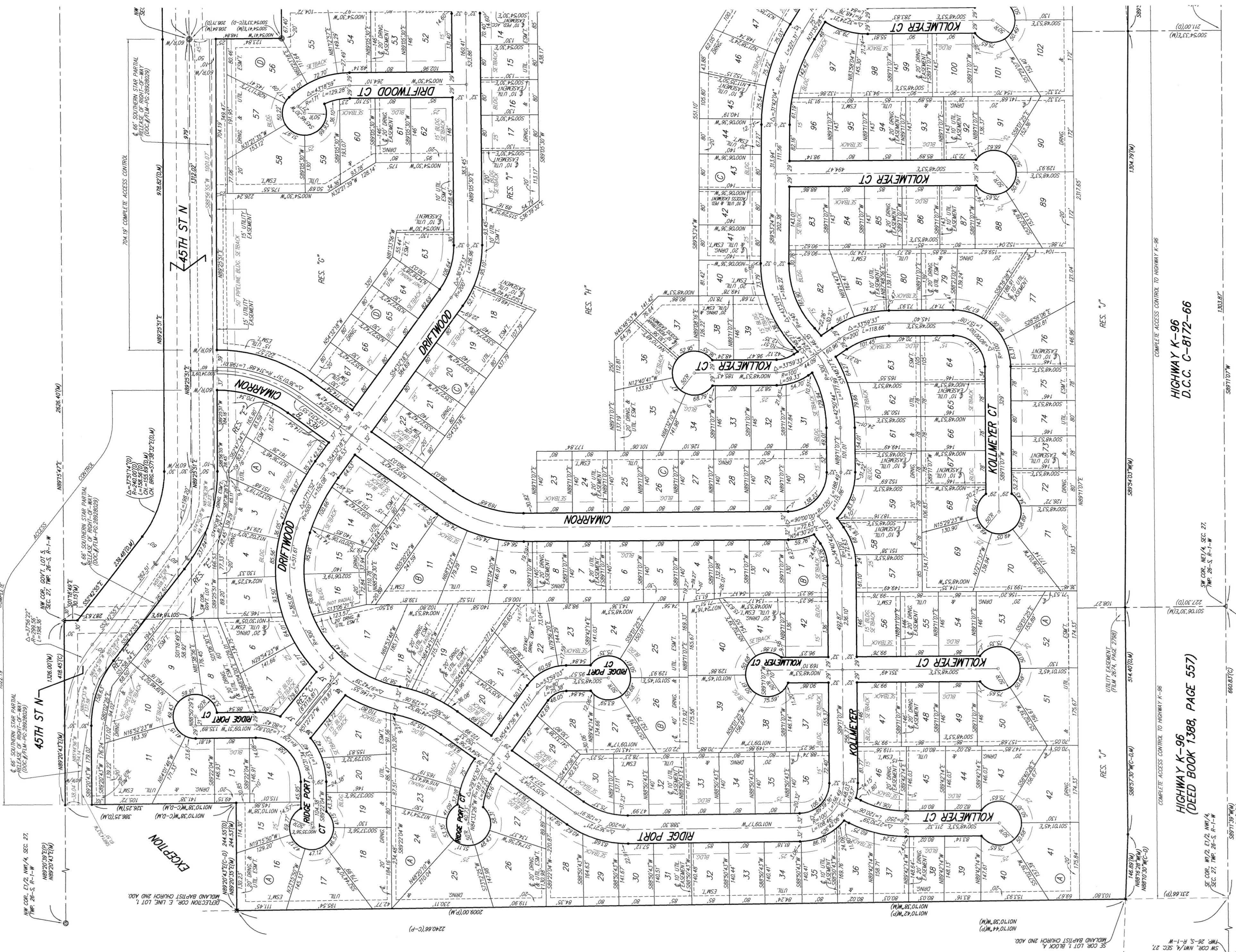


# EDGE WATER ADDITION WICHITA, SEDGWICK COUNTY, KANSAS



MINIMUM BUILDING AND ELEVATIONS FOR LOWEST OPENINGS TO THE STRUCTURES	ELEVATION
LOT	MIN/029
118-119	A 118.0
1-6, 10-25	C 118.1
35-38, 40-54	C 118.1
56-67	D 118.1



- ⊙ = #4 REBAR W/ BAUGHMAN CAP (SET)
- ⊙ = STONE (FOUND)
- ⊙ = 3/4" IRON (FOUND)
- ⊙ = 1/2" IRON (FOUND)
- ⊙ = #4 REBAR W/ SANDY CAP (FOUND)
- ⊙ = #4 REBAR W/ TILSY CAP (FOUND)
- ⊙ = #4 REBAR W/ BAUGHMAN CAP (FOUND)
- ⊙ = #5 REBAR W/ BARBER CAP (FOUND)
- ⊙ = #5 REBAR W/ STONE (FOUND)
- (M) = MEASURED
- (C) = CALCULATED
- (P) = PLATED
- (D) = DESCRIBED
- (CM) = CALCULATED PER
- (C-D) = MEASURED WITH DESCRIBED INFO
- (C-P) = CALCULATED PER PLATED INFO

NOTE: THE CITY OF WICHITA HAS REVIEWED THIS SUBDIVISION AND IS IN FULL COMPLIANCE WITH THE KANSAS SUBDIVISION ACT AND LOCAL ORDINANCES. THE CITY ENGINEER HAS REVIEWED THE PLAN AND APPROVED THE SUBDIVISION. THE CITY ENGINEER'S REVIEW IS LIMITED TO THE TECHNICAL ASPECTS OF THE PLAN AND DOES NOT CONSTITUTE A GUARANTEE OF THE ACCURACY OF THE INFORMATION PROVIDED HEREON. THE CITY ENGINEER'S REVIEW IS LIMITED TO THE TECHNICAL ASPECTS OF THE PLAN AND DOES NOT CONSTITUTE A GUARANTEE OF THE ACCURACY OF THE INFORMATION PROVIDED HEREON.

A master grading plan for drainage has been developed for this subdivision and is on file with the City of Wichita, Kansas. All drainage easements, easements, and utility easements shown on this plan are in accordance with the master grading plan and have been approved by the City Engineer of the City of Wichita, Kansas. No obstructions which impede the flow of this drainage system are allowed.

BAUGHMAN COMPANY, P.A.  
315 E. 10th St., Wichita, KS 67211 P 316.262.7171 F 316.262.0199  
ENGINEERS | PLANNERS | LANDSCAPE ARCHITECTS  
BAUGHMAN