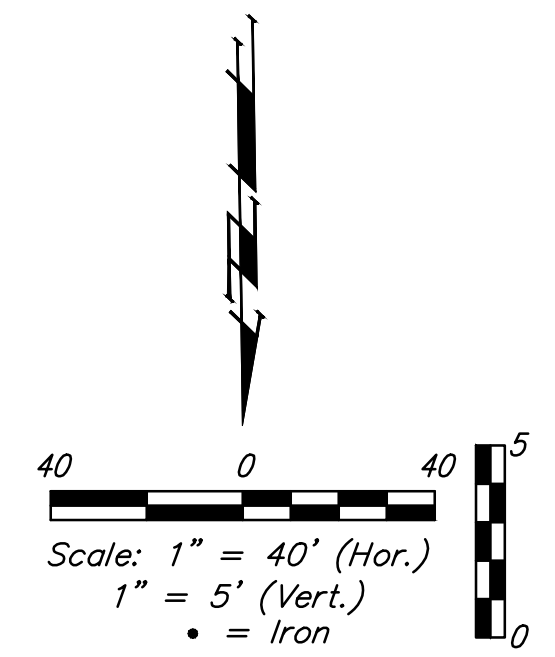
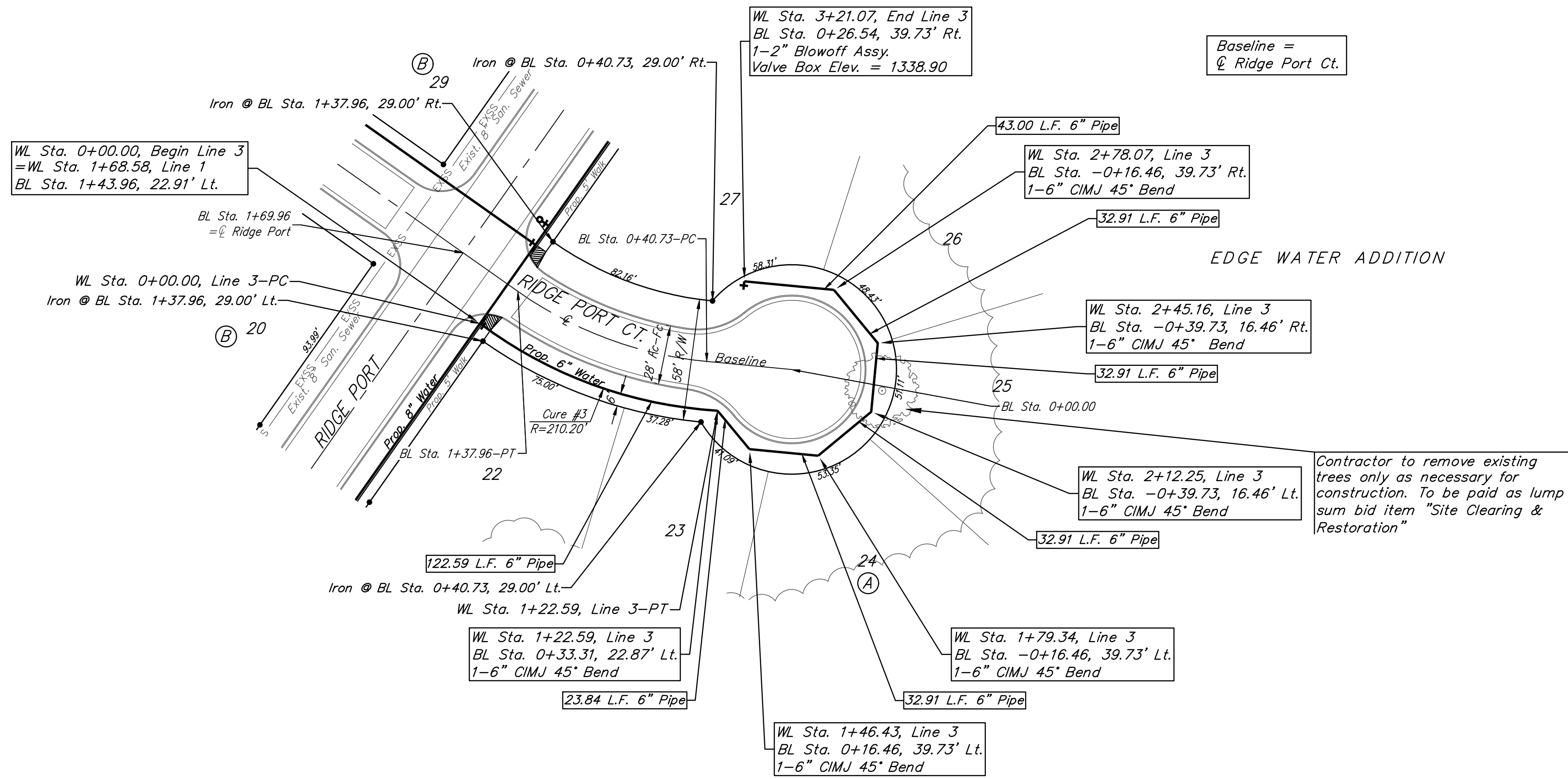


BENCHMARKS:

BM #1: Disc on Top of Curb between Lot 8 and Lot 9, Block B on West Side of Cimarron, Edge Water Addition
Elev. = 1335.14 NGVD29

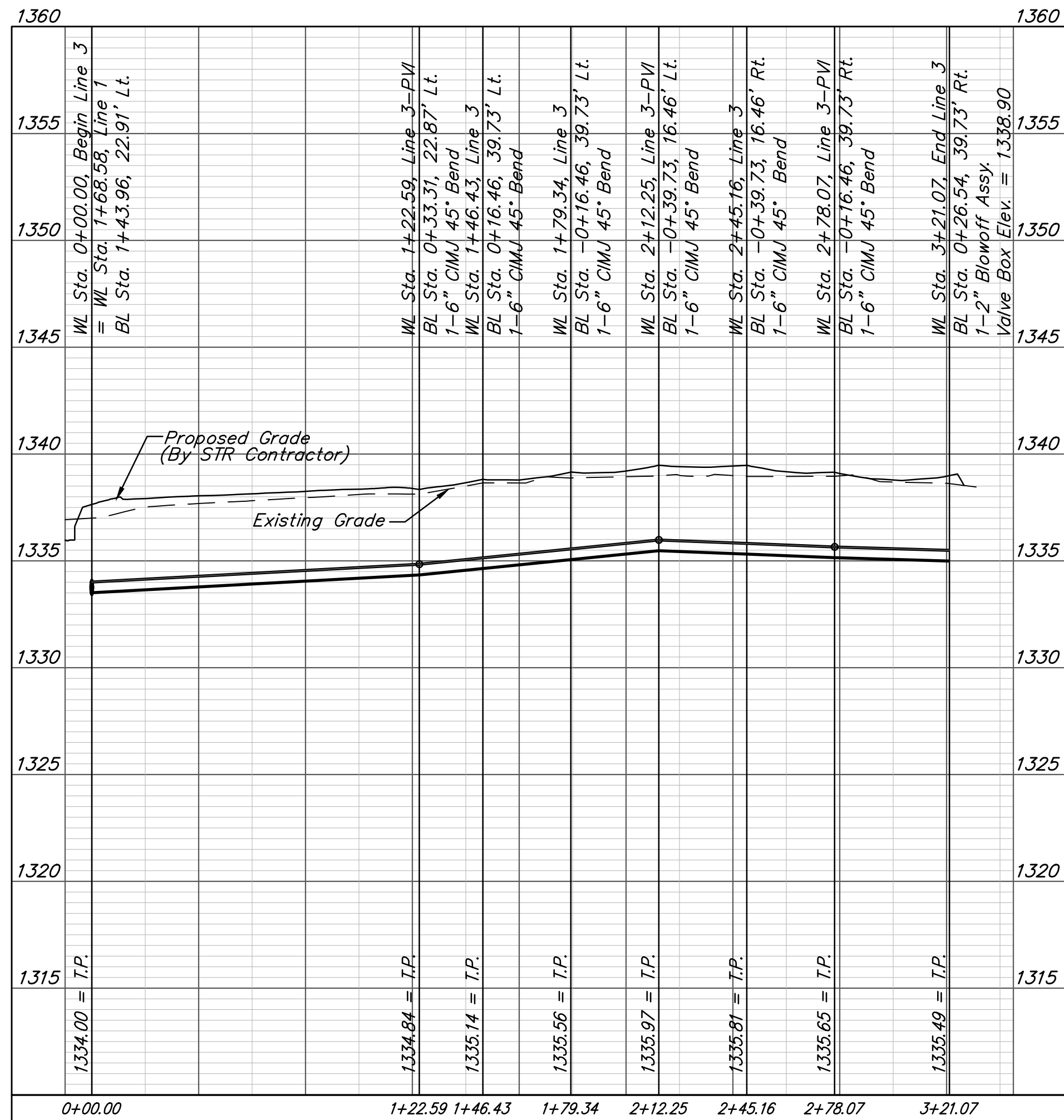
BM #2: "□" on Top of Curb East Side of Ridge Port at End of Curb, North Corner of Lot 30, Block B; Edge Water Addition
Elev. = 1335.17 NGVD29



Curve #3
Curve Data Based on Centerline of Pipe

Rad. = 210.20' Delta = 33°24'56" Tangent = 63.09'
Arc = 122.59' L.C. = 120.86' Def./Ft. = 8.17739 Min.

Station	Arc	Chord 8' Left	Defl.	Total Defl.
0+00.00	-	-	0°00'00"	0°00'00"
0+25.00	25.00'	22.37'	3°24'26"	3°24'26"
0+50.00	25.00'	22.37'	3°24'26"	6°48'52"
0+75.00	25.00'	22.37'	3°24'26"	10°13'18"
1+00.00	25.00'	22.37'	3°24'26"	13°37'44"
1+22.59	22.59'	20.22'	3°04'44"	16°42'28"



		Edge Water Addition Phase 6A	
		LINE 3	
Water Distribution System		Baughman Company, P.A. 315 Ellis St. Wichita, KS 67211 P 316-262-7271 F 316-262-0149 ENGINEERING SURVEYING PLANNING LANDSCAPE ARCHITECTURE	
PROJECT NUMBER 448-90381	DESIGN AEG	DRAWN DJL	APPROVED DATE 5/17
REVISIONS:	SCALE Noted SHEET		
6 OF 15			