

# GENERAL NOTES:

1. Contractor will be required to provide notice to utility companies a minimum of forty-eight (48) hours prior to any excavation, as follows:

- Kansas One-Call 687-2470
- The Contractor must notify the following in case of an emergency:
- Cox Communications 262-4270
  - Kansas Gas Service 1-888-482-4950
  - Westar Energy 303-8650
  - Black Hills Energy 1-800-303-0357
  - AT&T 268-2245
  - City of Wichita Water Dept. 268-4563
  - City of Wichita Sewer Maint. 268-4024
  - City of Wichita Storm Sewer Maint. 268-4090
  - City of Wichita Traffic Maint. 268-4034
  - Conoco Phillips Pipeline Co. 1-877-267-2290
  - Southern Star Pipeline Co. 529-6600
  - Kinder-Morgan Pipeline Co. 1-888-844-5658

2. Utility service lines, poles, valve boxes, meters, and etcetera are to be adjusted as necessary by others prior to construction unless the plans specifically call for their adjustment by the Contractor or unless the plans specifically identify a utility to be adjusted by its owner during construction. Existing utilities and their location, as shown on the plans, represent the best information obtainable for design. The Contractor will be required to work around existing utilities within the right-of-way which do not conflict with proposed construction.

3. Rubble from the removal of miscellaneous structures and excess excavation which is to be wasted shall be disposed of on sites to be provided by the Contractor. These sites shall be approved by the Engineer as to suitability, appearance and site location. Locations, in the opinion of the Engineer, that will leave an unsightly appearance will not be approved. All disposal sites must be approved by the Kansas Department of Health and Environment. Material either stockpiled or disposed of in a flood plain would require a Kansas State Board of Agriculture permit. Any material dumped in waters of the United States or wetlands is subject to U.S. Corps. of Engineers permitting regulations. Any material buried or stockpiled beyond approved construction limits would require additional archaeological investigations unless buried in a previously approved borrow location.

4. Trees and shrubs in public right-of-way which are in direct conflict with proposed new construction shall be removed by the Contractor ONLY with the Developer or Baughman Company approval. Trees and shrubs which are not in direct conflict with proposed new construction shall be saved and protected from damage.

5. The Contractor shall give all property owners and/or tenants of developed property abutting the construction of this project a minimum of ten (10) days notice prior to start of construction.

6. The Contractor shall be responsible for preserving property irons. The Contractor will be required to re-establish any property irons which are damaged or destroyed by his construction operations. Such irons shall be re-established by a licensed Land Surveyor in accordance with state laws.

7. All existing and proposed erosion control measures including silt fencing, erosion control mat, straw bales, inlet barriers, and const. entrance shall be maintained throughout construction by the Contractor and until project is accepted by the City of Wichita. The on-site Engineer shall complete weekly reports on the status of erosion control measures. The Contractor shall be required to comply with maintenance and/or replacement of erosion control measures as determined by the on-site Engineer until project is accepted by City of Wichita. Maintenance and/or replacement of erosion control measures to be paid by L.S. bid item "Maintain Existing BMP's".

8. All excess excavation shall remain on-site and shall be stockpiled or spread at a location determined by the engineer.

9. All areas disturbed during construction shall be seeded as follows (Temporary Seeding):

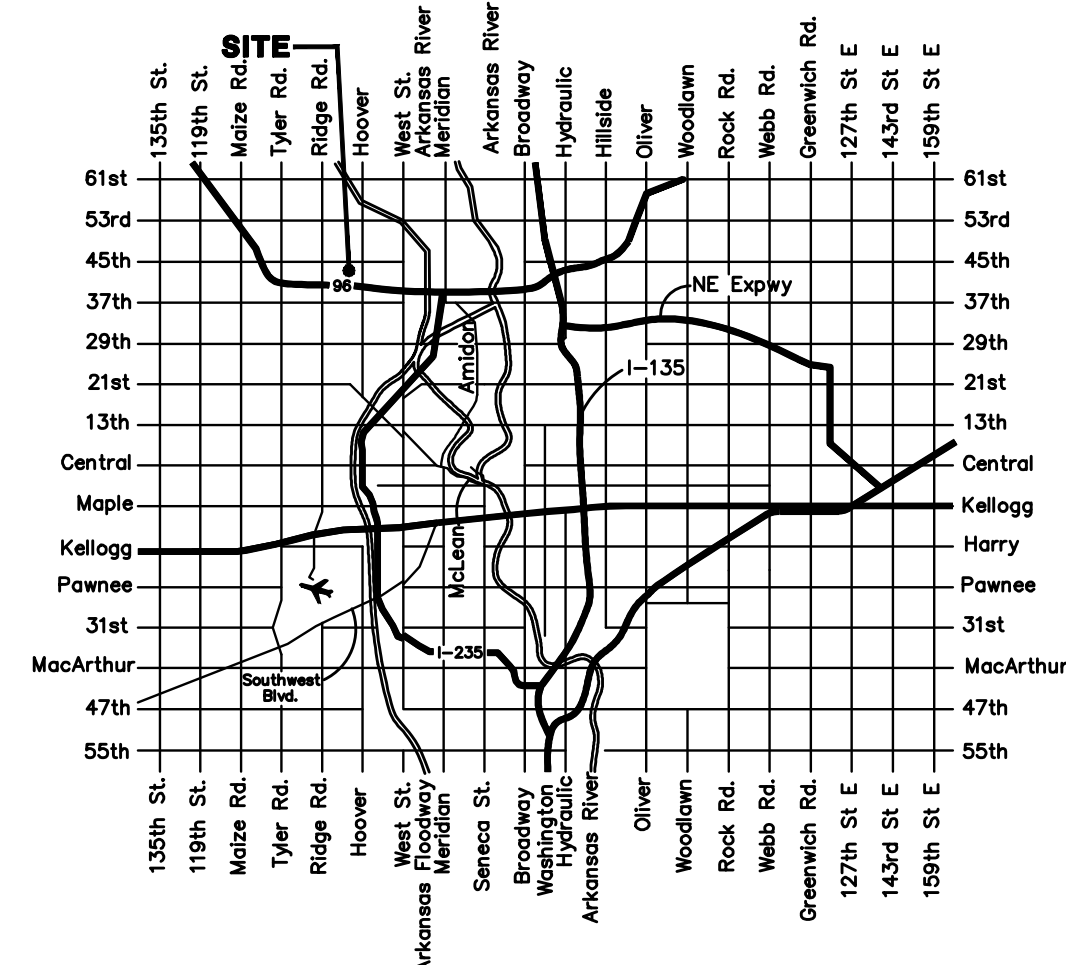
Seed: Ryegrass: 5 lbs/1000 sq. ft.  
Fertilizer and Mulch: per City Specifications

All seeding operations shall conform to City of Wichita Standard Specifications. All costs associated with seeding shall be included in bid item "Project Seeding".

10. The developer for this project is Jay Russell PH# (316) 722-2417.

## SHEET INDEX

|                                 |       |
|---------------------------------|-------|
| Cover Sheet                     | 1     |
| Asphalt Paving Detail           | 2     |
| Curb & Gutter Detail            | 3     |
| Valley Gutter Details           | 4     |
| Sign Details                    | 5     |
| Pavement Underdrain Details     | 6     |
| Ridge Port                      | 7-8   |
| Ridge Port Ct. (Lots 22-27)     | 9     |
| Ridge Port Ct. (Lots 20-29)     | 10    |
| SWS Line 1                      | 11-12 |
| Erosion Control Plan            | 13    |
| Erosion Control BMP Details     | 14-18 |
| Std. Type 1A Curb Inlet Detail  | 19    |
| Backyard Inlet Detail           | 20    |
| Single/Double Drop Inlet Detail | 21    |
| Frame and Cover Details         | 22    |
| Cross Sections                  | 23-27 |
| Coordinate Sheet                | 28    |
| Copy of Plat                    | 29-30 |



Vicinity Map

**Storm Water Certification:**  
These construction plans were prepared in accordance with the current Storm Water Management Regulations as set forth in the City of Wichita's Storm Water Management Ordinance 16.32 and the policies/guidelines presented in the Wichita/Sedgwick County Storm Water Manual.

Disturbed Area = 9.2 ac.  
Water Quality Treatment: This phase of construction utilizes a snout in a curb inlet for water quality treatment. The storm sewer connects to existing storm pipe and drains to an existing pond that is non-discharging for the design storm.

| Project Earthwork Totals (CY unadjusted) | Excavation              | Compacted Fill | Loose Fill |
|--|-------------------------|----------------|------------|
| Street (R/W)                             | 1,079                   | 48             | 481        |
| Easement Grading                         | 1,197                   | 0              | 549        |
| Project Total                            | 2,276                   | 48             | 1,030      |
| Total Project Length                     | 1,071 L.F. = 0.20 Miles |                |            |

# STREET PAVING AND INCIDENTAL STORM WATER SEWER IMPROVEMENTS

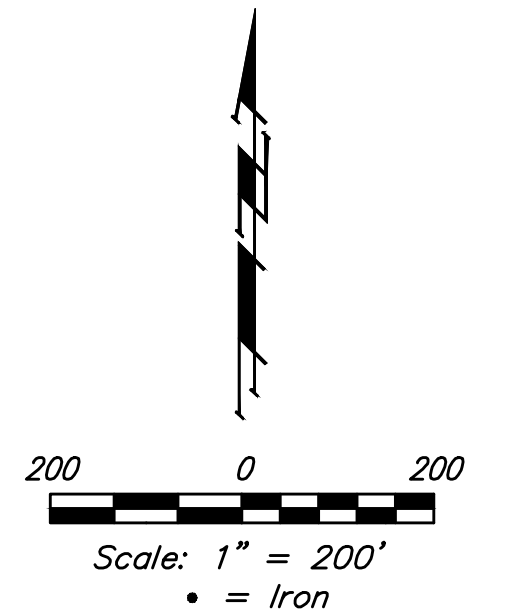
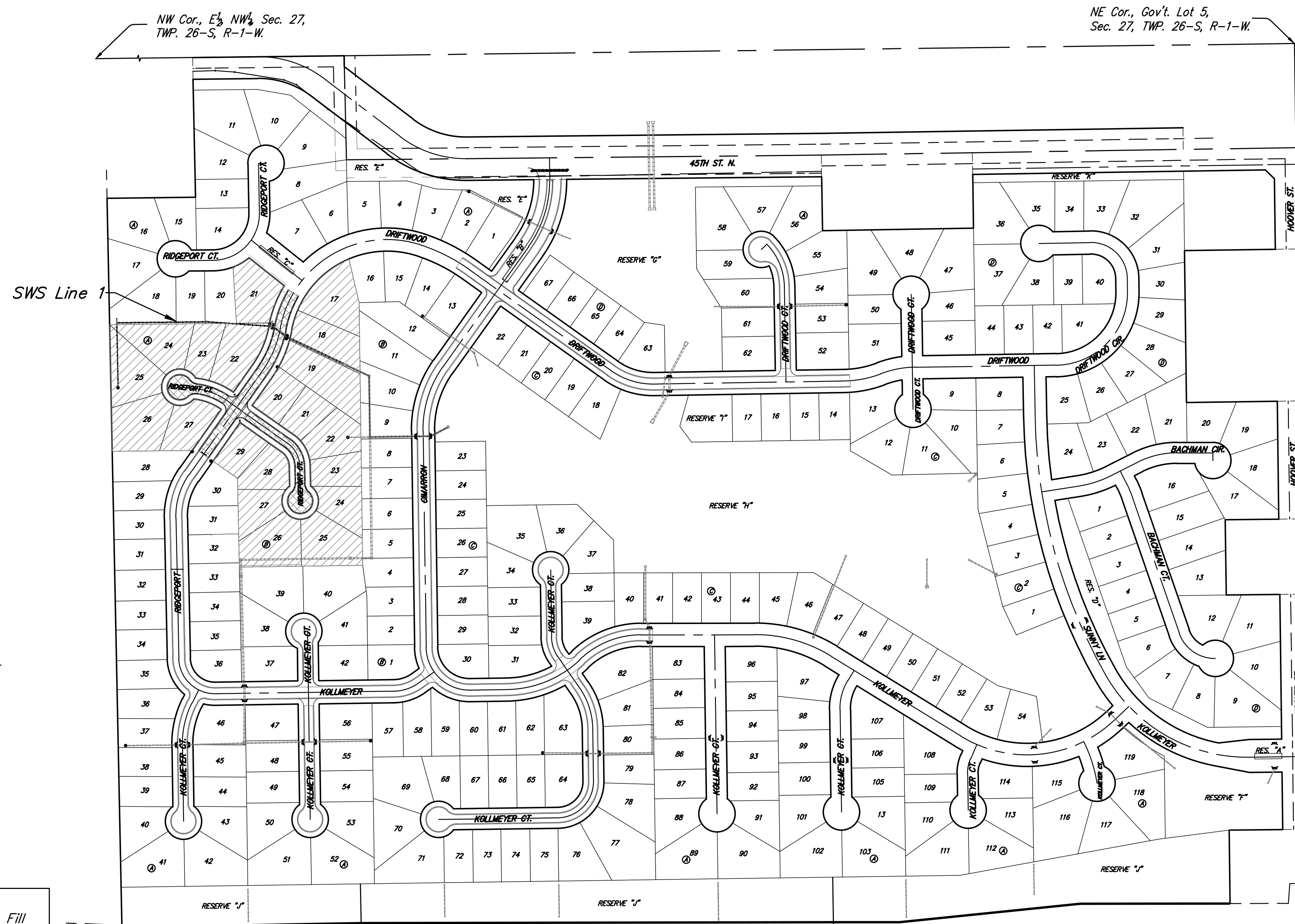
## EDGE WATER ADDITION PHASE 6A

Ridge Port from the north line of Lot 28, Block A, north and east to the north line of Lot 21, Block A on Ridge Port Ct. Lots 22 through 27, Block A from the west line of Ridge Port, west to and including the cul-de-sac and on Ridge Port Ct. Lots 20 through 29, Block B from the east line of Ridge Port, east and south to and including the cul-de-sac.

## CITY OF WICHITA, KANSAS

Gar Janlen, P.E. Civil Engineer  
Project Number 472-84708  
OCA Number 766392

**CONSTRUCTION SEQUENCE:**  
Water Distribution and Street Paving will bid on the same day. The Storm Water Sewer portion of the Street Paving contract should be constructed prior to the water project. Due to proposed pipe depths and tight area of construction near Storm Water Sewer at Sta. 2+26.8. The Street and Storm Water Sewer project may then be suspended until the Water Line project is complete.



## BENCHMARKS

BM #1: Disc on Top of Curb between Lot 8 and Lot 9, Block B on West Side of Cimarron Edge Water Addition Elev. = 1335.14 NGVD29

BM #2: "□" on Top of Curb East Side of Ridge Port at End of Curb, North Corner of Lot 30, Block B; Edge Water Addition Elev. = 1338.17 NGVD29



Baughman Company, P.A. 315 Ellis St. Wichita, KS 67211 P 316-262-7271 F 316-262-0148  
ENGINEERING | SURVEYING | PLANNING | LANDSCAPE ARCHITECTURE

Proj. No. 472-84708 Benelit District