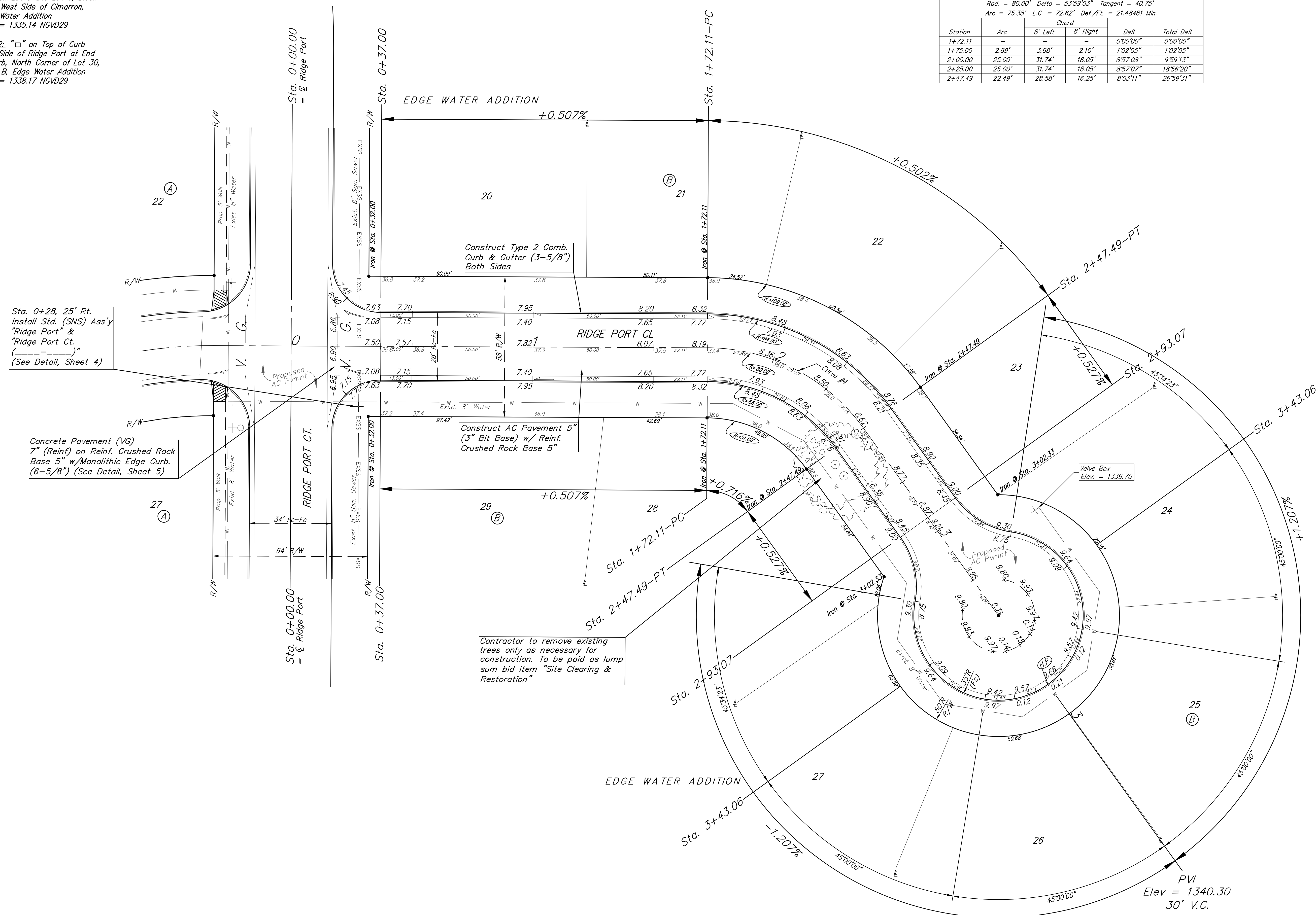
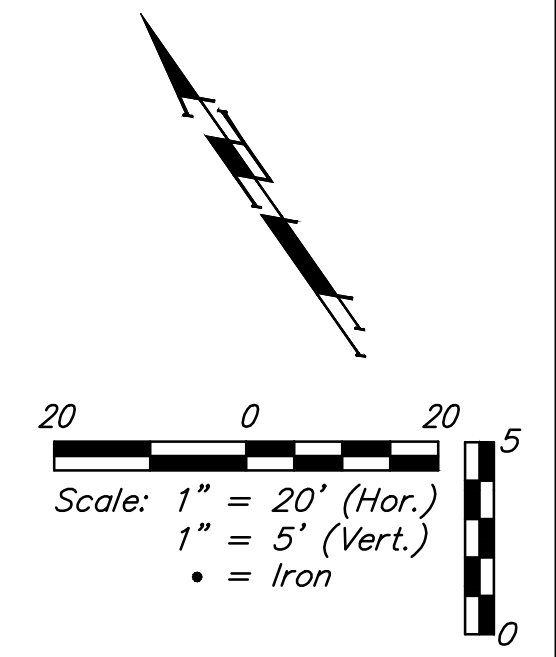


BENCHMARKS:
BM #1: Disc of Top of Curb
 between Lot 8 and Lot 9, Block
 B on West Side of Cimarron,
 Edge Water Addition
 Elev. = 1335.14 NGVD29

BM #2: "□" on Top of Curb
 East Side of Ridge Port at End
 of Curb, North Corner of Lot 30,
 Block B, Edge Water Addition
 Elev. = 1335.17 NGVD29

Curve #4
 Curve Data Based on Centerline
 Rad. = 80.00' Delta = 53°59'03" Tangent = 40.75'
 Arc = 75.36' L.C. = 72.62' Def./Ft. = 21.48481 Min.

Station	Arc	Chord		Defl.	Total Defl.
		8' Left	8' Right		
1+72.11	-	-	-	0°00'00"	0°00'00"
1+75.00	2.89'	3.68'	2.10'	1°02'05"	1°02'05"
2+00.00	25.00'	31.74'	18.05'	8°57'08"	9°59'13"
2+25.00	25.00'	31.74'	18.05'	8°57'07"	18°56'20"
2+47.49	22.49'	28.58'	16.25'	8°03'11"	26°59'31"



Construct Type 2 Comb.
 Curb & Cutter (3-5/8")
 Both Sides

Construct AC Pavement 5"
 (3" Bit Base) w/ Reinf.
 Crushed Rock Base 5"

Contractor to remove existing
 trees only as necessary for
 construction. To be paid as lump
 sum bid item "Site Clearing &
 Restoration"

Concrete Pavement (VG)
 7" (Reinf) on Reinf. Crushed Rock
 Base 5" w/Monolithic Edge Curb.
 (6-5/8") (See Detail, Sheet 5)

Sta. 0+28, 25' Rt.
 Install Std. (SNS) Ass'y
 "Ridge Port" &
 "Ridge Port Ct."
 (See Detail, Sheet 4)

Roll type curb & gutter to
 be constructed on the pavement
 on this sheet.
 Top of curb elevation are given
 for full height curb.

	Edge Water Addition Phase 6A	
	RIDGE PORT CT. Sta. 0+00.00 to Sta. 3+43.06	
Baughman Company, P.A. 315 Ellis St. Wichita, KS 67211 P 316.262.7211 F 316.262.0149 ENGINEERING SURVEYING PLANNING LANDSCAPE ARCHITECTURE		
PROJECT NUMBER 472-84703	DESIGN AEG	DRAWN DJL
REVISIONS:	APPROVED	DATE 6/17
	SCALE Noted	
	SHEET	0 OF 30