

BENCHMARKS:

BM #1: Disc on Top of Curb between Lot 8 and Lot 9, Block B on West Side of Cimarron, Edge Water Addition
Elev. = 1335.14 NGVD29

BM #2: "□" on Top of Curb East Side of Ridge Port at End of Curb, North Corner of Lot 30, Block B; Edge Water Addition
Elev. = 1338.17 NGVD29

Contractor to remove existing trees only as necessary for construction. To be paid as lump sum bid item "Site Clearing & Restoration"

Sta. 0+00.0, Begin Line 1
Const. Remove Plug and connect to Existing 42" Stub and extend Northwest (@ 0.097%)
Contractor to verify depth of stub prior to construction
Top Elev. = 1333.81

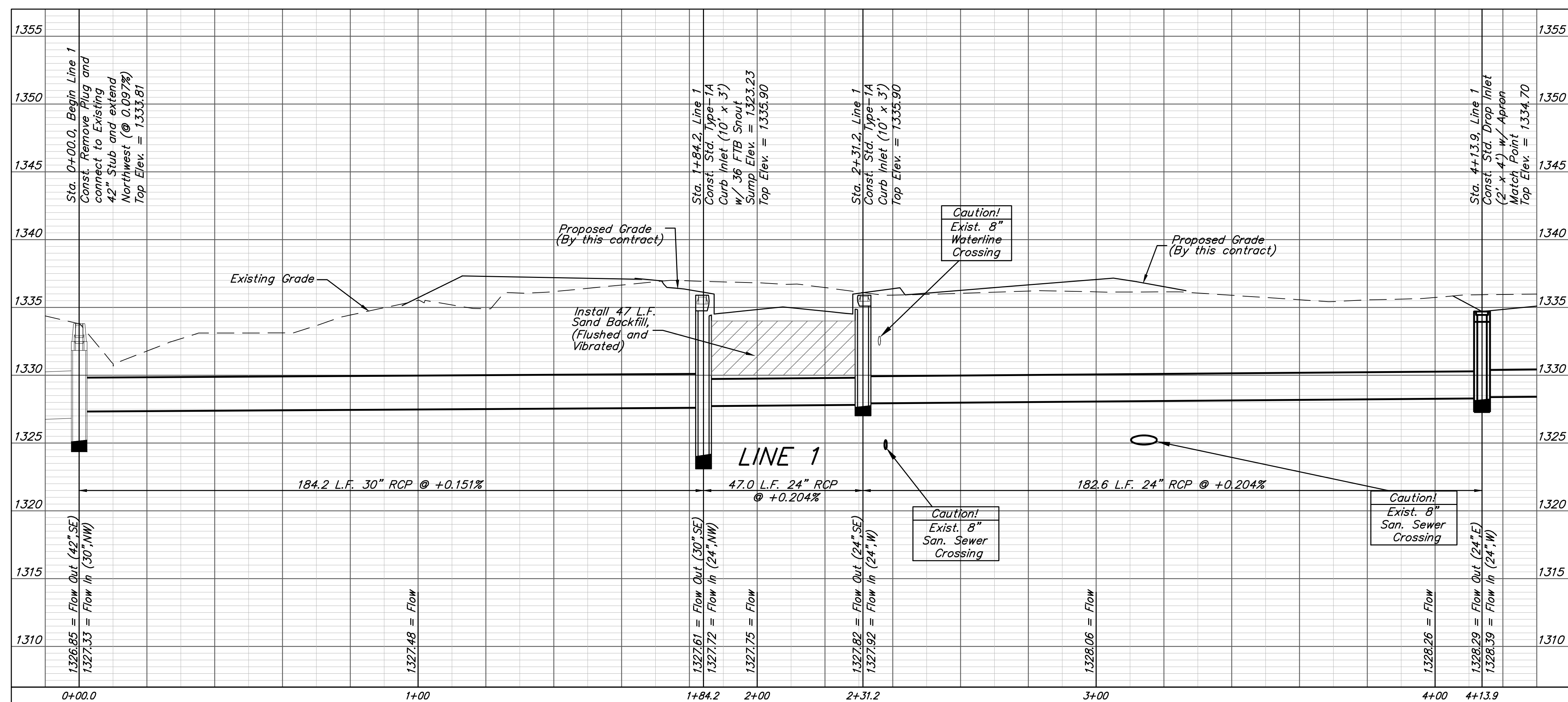
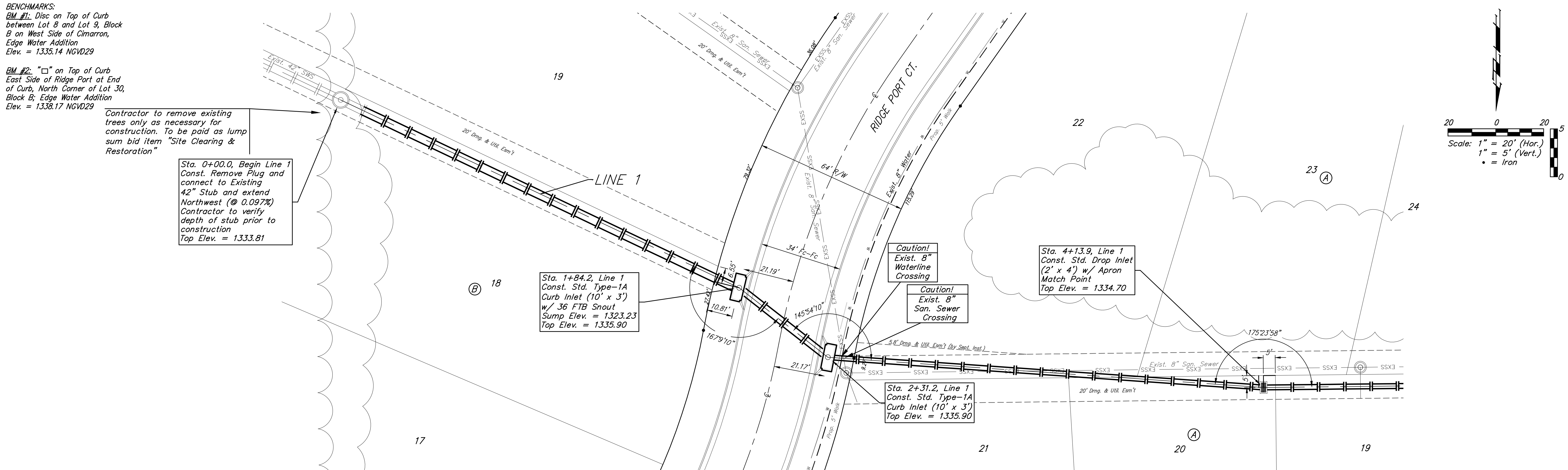
Sta. 1+84.2, Line 1
Const. Std. Type-1A Curb Inlet (10' x 3') w/ 36 FTB Snout
Sump Elev. = 1323.23
Top Elev. = 1335.90

Caution!
Exist. 8" Waterline Crossing

Caution!
Exist. 8" San. Sewer Crossing

Sta. 4+13.9, Line 1
Const. Std. Drop Inlet (2' x 4') w/ Apron Match Point
Top Elev. = 1334.70

Sta. 2+31.2, Line 1
Const. Std. Type-1A Curb Inlet (10' x 3')
Top Elev. = 1335.90



		Edge Water Addition Phase 6A	
		LINE 1 Storm Water Sewer Improvements	
<small>Baughman Company, P.A. 315 Ellis St. Wichita, KS 67211 P 316-262-7271 F 316-262-0149 ENGINEERING SURVEYING PLANNING LANDSCAPE ARCHITECTURE</small>			
PROJECT NUMBER 472-84708	DESIGN AEG	DRAWN DJL	
REVISIONS:	APPROVED	DATE 5/17	
	SCALE Noted		
	SHEET		
			11 OF 30