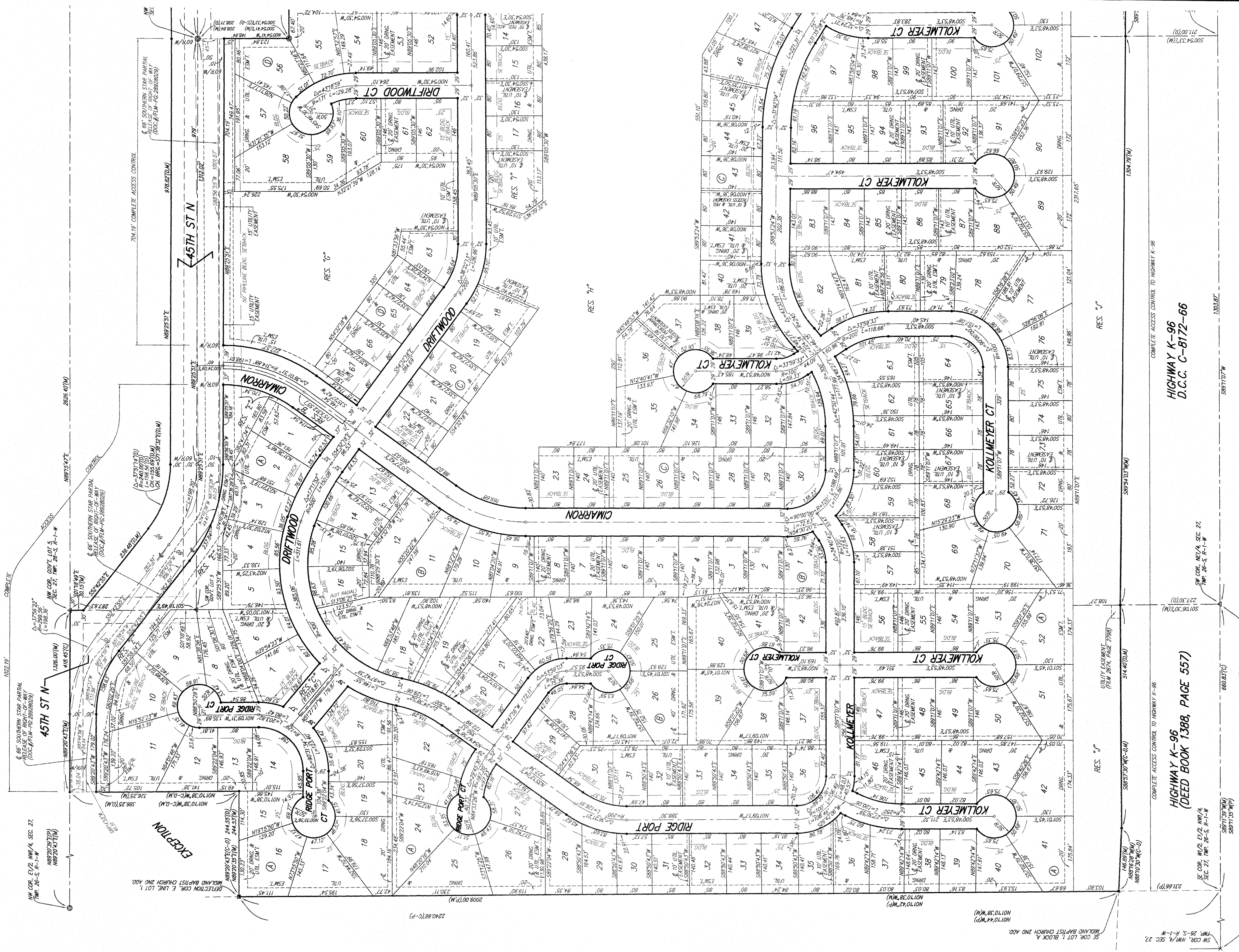


# EDGE WATER ADDITION WICHITA, SEDGWICK COUNTY, KANSAS



MINIMUM BUILDING PAD ELEVATIONS FOR  
LORVEST OPENING TO THE STRUCTURES

LOT	BLOCK	ELEVATION
118-119	A	1336.0
1-6, 10-25	C	1333.1
35-38, 40-54	C	1333.1
55-67	D	1333.1



- △ = 4" REAR W/ TAUGHMAN CAP (SET)
- = 4" STAKE (FOUND)
- = 1/2" IRON (FOUND)
- = 1/2" IRON (FOUND)
- = 4" REAR W/ SHAWY CAP (FOUND)
- = 4" REAR W/ TILTS CAP (FOUND)
- = 4" REAR W/ TAUGHMAN CAP (FOUND)
- = 4" REAR W/ CARBET CAP (FOUND)
- = 4" REAR W/ STONE (FOUND)

(M) = MEASURED  
(D) = DESCRIBED  
(C) = CALLED  
(F) = FOUND  
(S) = SET  
(A) = ADJUSTED  
(C-M) = CALCULATED PER  
CITY RECORDS  
(C-D) = CALCULATED PER  
CITY RECORDS  
(C-F) = CALCULATED PER  
CITY RECORDS

NOTE: PLANNING AND ENGINEERING HAS BEEN DEVELOPED FOR THIS ADDITION AND IS ON FILE WITH THE CITY OF WICHITA, KANSAS. ALL EASEMENTS, RIGHTS-OF-WAY, OR RESERVES SHOWN ON THIS PLAN ARE AS SHOWN ON THE RECORDS OF THE CITY ENGINEER OF THE CITY OF WICHITA, KANSAS. NO CONSTRUCTION WHICH IMPAIRS THE FLOW OF THIS DRAINAGE SYSTEM IS ALLOWED.