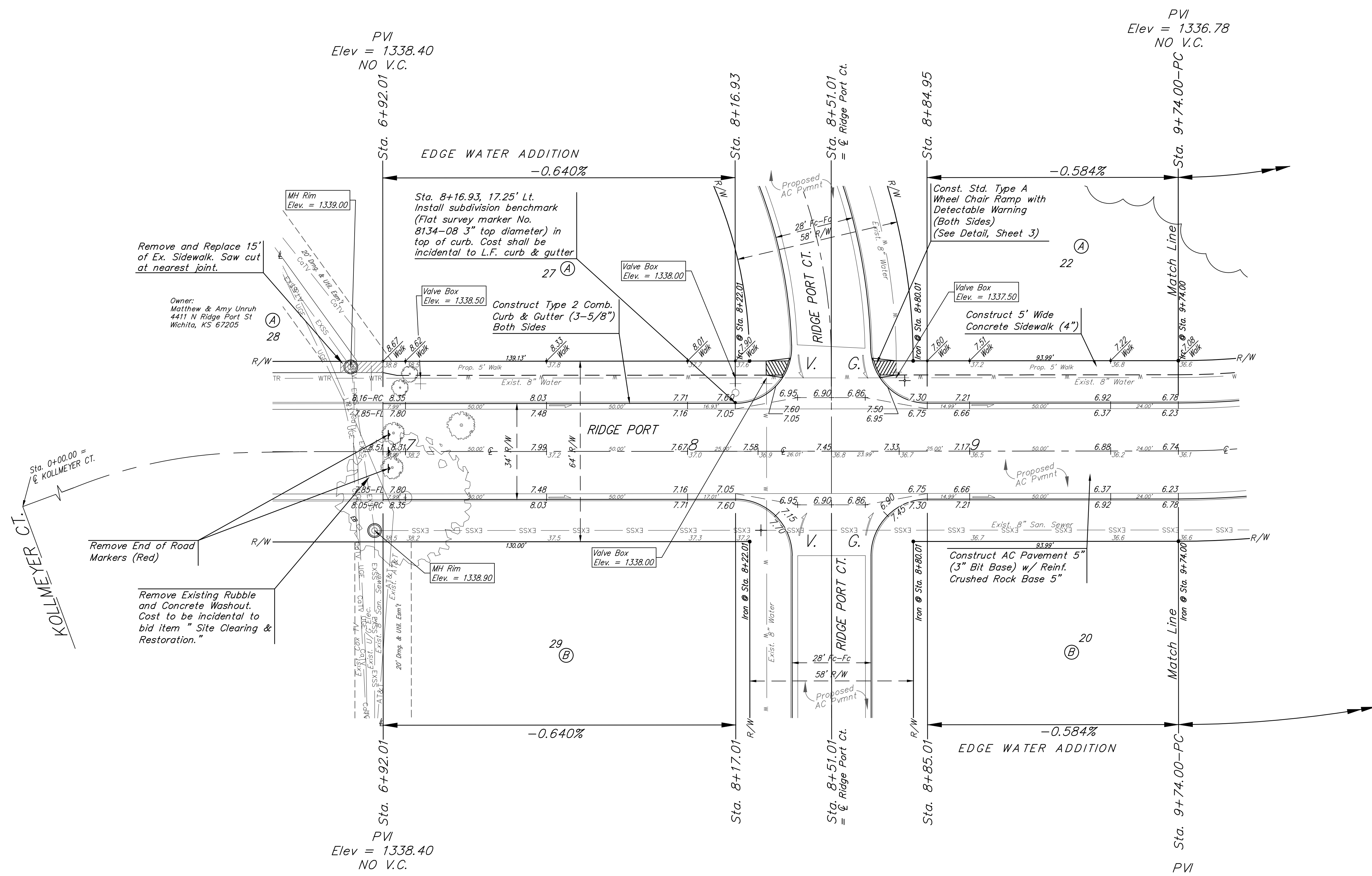
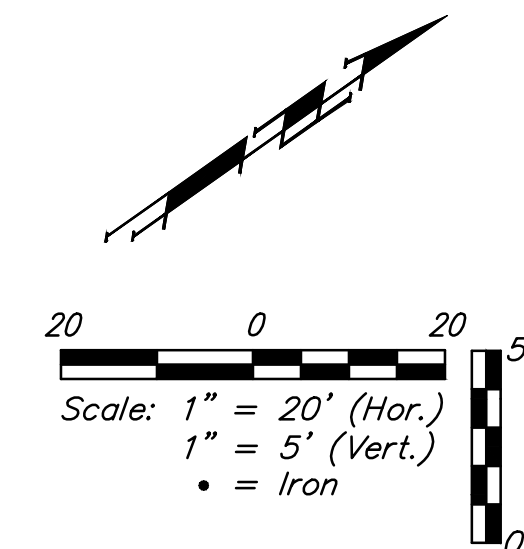


BENCHMARKS:

BM #1: Disc of Top of Curb between Lot 8 and Lot 9, Block B on West Side of Cimarron, Edge Water Addition
Elev. = 1335.14 NGVD29

BM #2: "□" on Top of Curb East Side of Ridge Port at End of Curb, North Corner of Lot 30, Block B, Edge Water Addition
Elev. = 1338.17 NGVD29

| Subdivision Bench Marks | | |
|-----------------------------------|---|-----------|
| Street & Station | Location Description | Elevation |
| Ridge Port 8+16.93, 17.25' Lt. | Adjacent to Fire Hydrant at Northeast Corner of Lot 27, Block A on Ridge Port | |



VALVE LOCATION TABLE

| VALVE NUMBER | BASELINE STATION | OFFSET DISTANCE | OFFSET DIRECTION |
|--------------|------------------|-----------------|------------------|
| 1 | 7+05.34 | 26.00' | Lt |
| 2 | 8+17.01 | 26.00' | Lt |
| 3 | 8+28.01 | 26.00' | Lt |
| 4 | 8+73.92 | 26.00' | Lt |
| 5 | 11+98.00 | 25.46' | Lt |
| 6 | 12+16.41 | 26.0' | Lt |
| 7 | 0+26.54 | 39.72' | Rt |
| 8 | 3+16.52 | 39.72' | Lt |

Roll type curb & gutter to be constructed on the pavement on this sheet. Top of curb elevation are given for full height curb.

| | |
|--|------------------------------|
| | Edge Water Addition Phase 6A |
| | RIDGE PORT |
| Sta. 6 92.01 to Sta. 9 74.00 | |
| Baughman Company, P.A. 315 Ellis St. Wichita, KS 67211 P 316.262.0149 F 316.262.0149 | |
| ENGINEERING SURVEYING PLANNING LANDSCAPE ARCHITECTURE | |
| PROJECT NUMBER 472-84703 | DESIGN AEG |
| REVISIONS: | DRAWN DJI |
| | APPROVED DATE 6/17 |
| | SCALE Noted |
| | SHEET |
| | OF 30 |