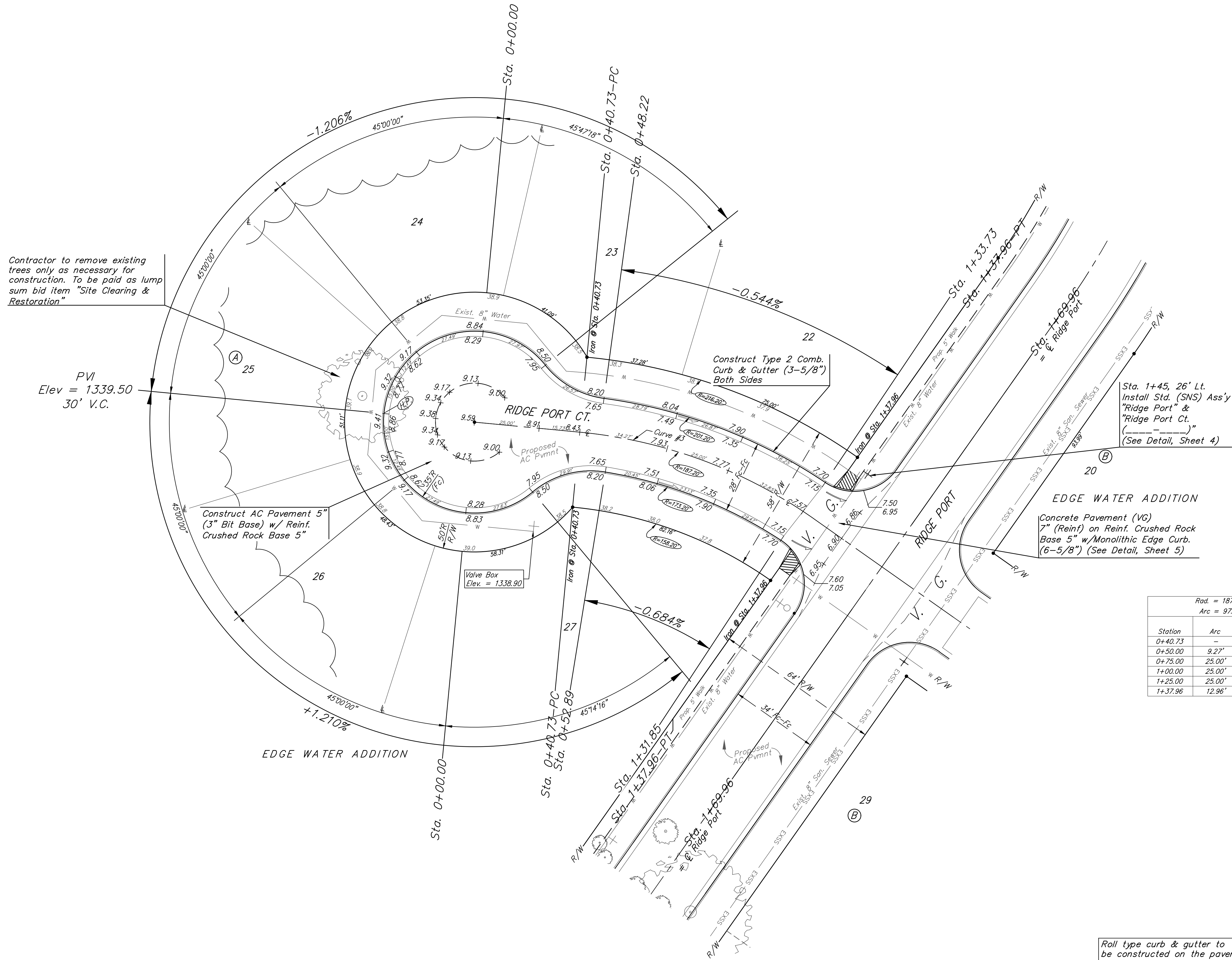
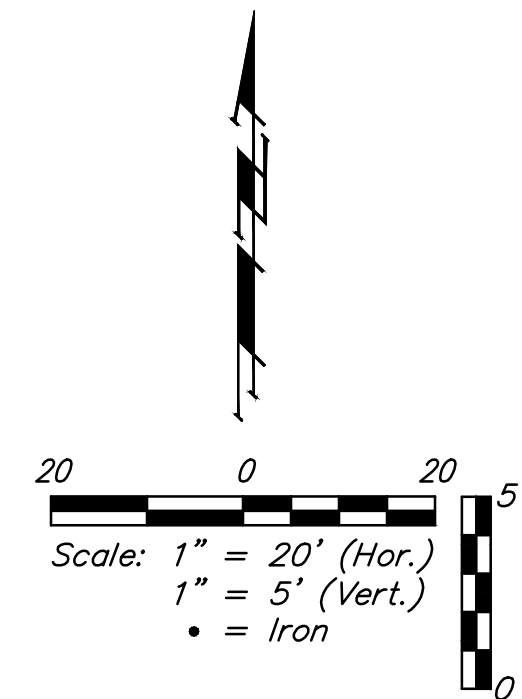


BENCHMARKS:

BM #1: Disc on Top of Curb
between Lot 8 and Lot 9, Block
B on West Side of Cimarron,
Edge Water Addition
Elev. = 1335.14 NGVD29

BM #2: "□" on Top of Curb
East Side of Ridge Port at End
of Curb, North Corner of Lot 30,
Block B, Edge Water Addition
Elev. = 1338.17 NGVD29



Contractor to remove existing trees only as necessary for construction. To be paid as lump sum bid item "Site Clearing & Restoration"

PVI
Elev = 1339.50
30' V.C.

Construct AC Pavement 5"
(3" Bit Base) w/ Reinf.
Crushed Rock Base 5"

Construct Type 2 Comb.
Curb & Gutter (3-5/8")
Both Sides

EDGE WATER ADDITION
Concrete Pavement (VG)
7" (Reinf) on Reinf. Crushed Rock
Base 5" w/Monolithic Edge Curb.
(6-5/8") (See Detail, Sheet 5)

Curve #3
Curve Data Based on Centerline
Rad. = 187.198' Delta = 29°45'30" Tangent = 49.74'
Arc = 97.23' L.C. = 96.14' Def./Ft. = 9.18184 Min.

Station	Arc	Chord		Def.	Total Def.
		8' Left	8' Right		
0+40.73	-	-	-	0'00"00"	0'00"00"
0+50.00	9.27'	10.36'	8.18'	1'25'07"	1'25'07"
0+75.00	25.00'	27.92'	22.04'	3'49'33"	5'14'40"
1+00.00	25.00'	27.92'	22.04'	3'49'32"	9'04'12"
1+25.00	25.00'	27.92'	22.04'	3'49'33"	12'53'45"
1+37.96	12.96'	14.48'	11.43'	1'59'00"	14'52'45"

Roll type curb & gutter to be constructed on the pavement on this sheet.
Top of curb elevation are given for full height curb.

	Edge Water Addition Phase 6A	
	RIDGE PORT CT.	
Sta. 0+00.00 to Sta. 1+69.96		
Baughman Company, P.A. 315 Ellis St. Wichita, KS 67211 P 316.262.0149 F 316.262.0149		
ENGINEERING SURVEYING PLANNING LANDSCAPE ARCHITECTURE		
PROJECT NUMBER 472-84703	DESIGN AEG	DRAWN DJL
REVISIONS:	APPROVED	DATE 5/17
	SCALE Noted	
	SHEET	OF 30