

WATER MAIN RELOCATION PROJECT

MT. VERNON ROAD

AT

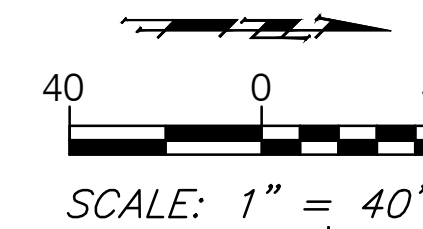
GYPSUM CREEK

FOR
**THE CITY OF WICHITA,
 SEDGWICK COUNTY, KANSAS**

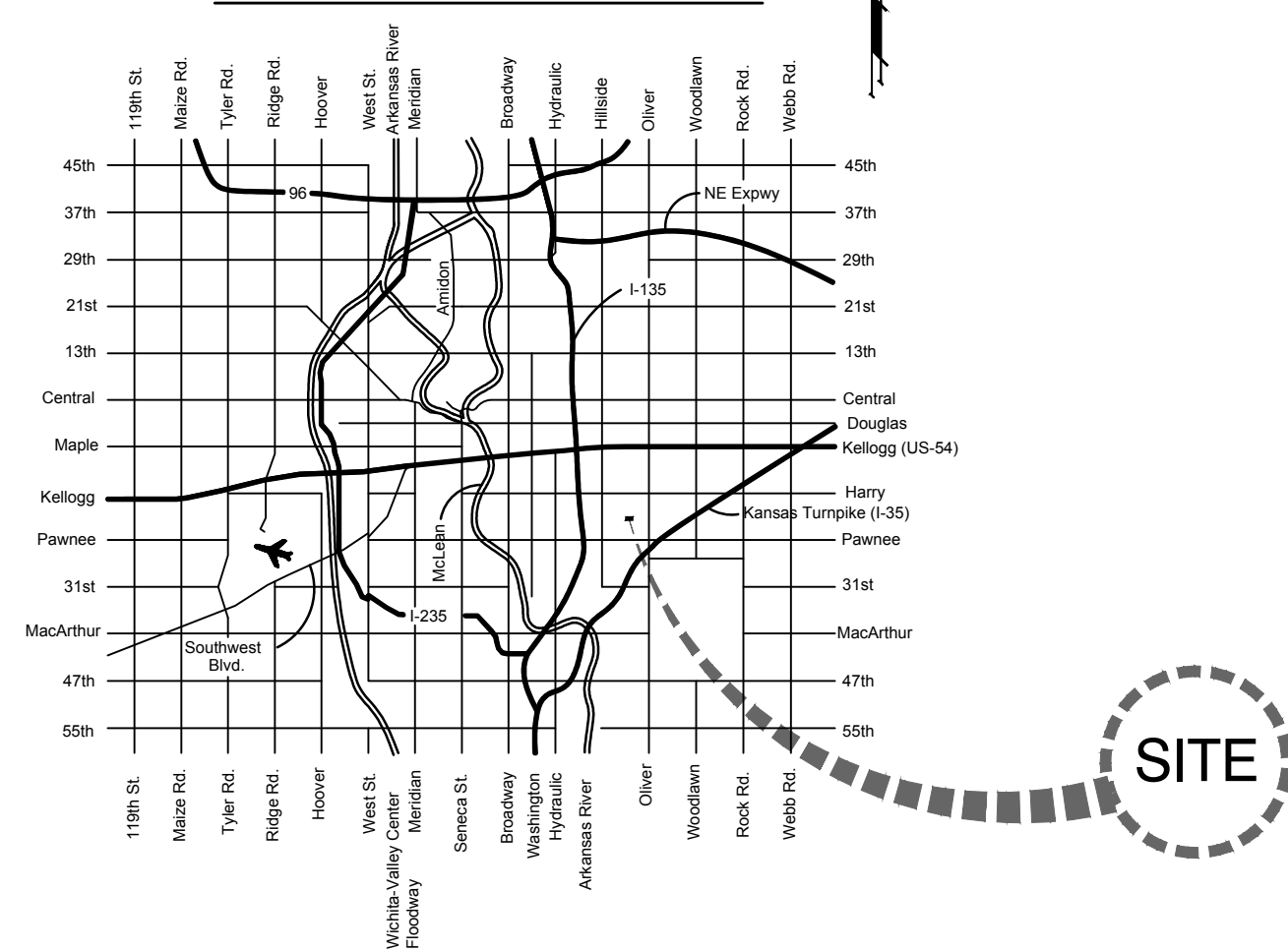
Gary Janzen, P.E., City Engineer

City Project No. - 448-90758
 O.C.A. No. - 636435

March 2017



VICINITY MAP

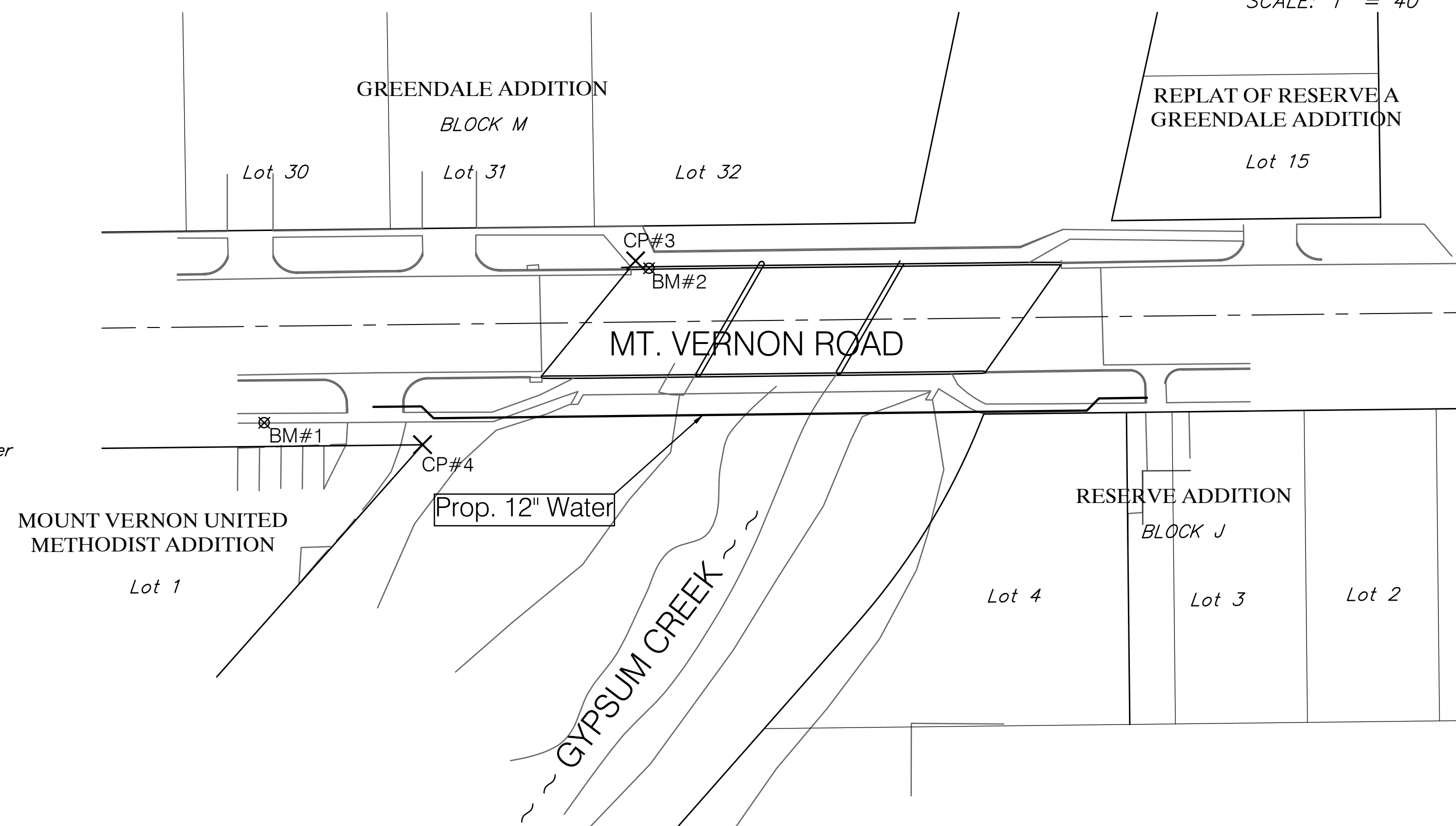


Index

- 1 Title Sheet
- 2 Notepage
- 3 Water Main Plan/Profile
- 4-6 Standard Details
- 7-11 Erosion Control Details

BENCHMARKS:

- BM #1 - Chiseled "□" on the South Side of the Sidewalk 35' West of the West Side of the Mt. Vernon United Methodist Church Driveway off of Mt. Vernon.
Elev. = 1318.41 (NAVD 88)
- BM #2 - City of Wichita Brass Benchmark Disc on the Northwest Corner of the Mt. Vernon Bridge over Gypsum Creek.
Elev. = 1320.24 (NAVD 88)



CONTROL POINTS:

- CP #1 - V-Notch at the Northwest Property Corner of Lot 1, Block H, Reserve Addition
(Southeast Quadrant of Mt. Vernon & Green Acres Drive)
N-1675391.11
E-1669224.98
- CP #2 - #5 Rebar at the Northwest Property Corner of Lot 1, Mt. Vernon United Methodist Addition
(Southeast Quadrant of Mt. Vernon & Edgemoor)
N-1675367.71
E-1668060.45
- CP #3 - Chiseled "X" on the Sidewalk on the Northwest Corner of Mt. Vernon over the Gypsum Creek
N-1675450.63
E-1668702.34
- CP #4 - #5 Rebar at the Northeast Property Corner of Lot 1, Mt. Vernon United Methodist Addition
N-1675374.03
E-1668613.59

