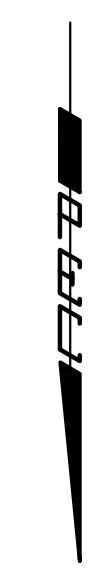
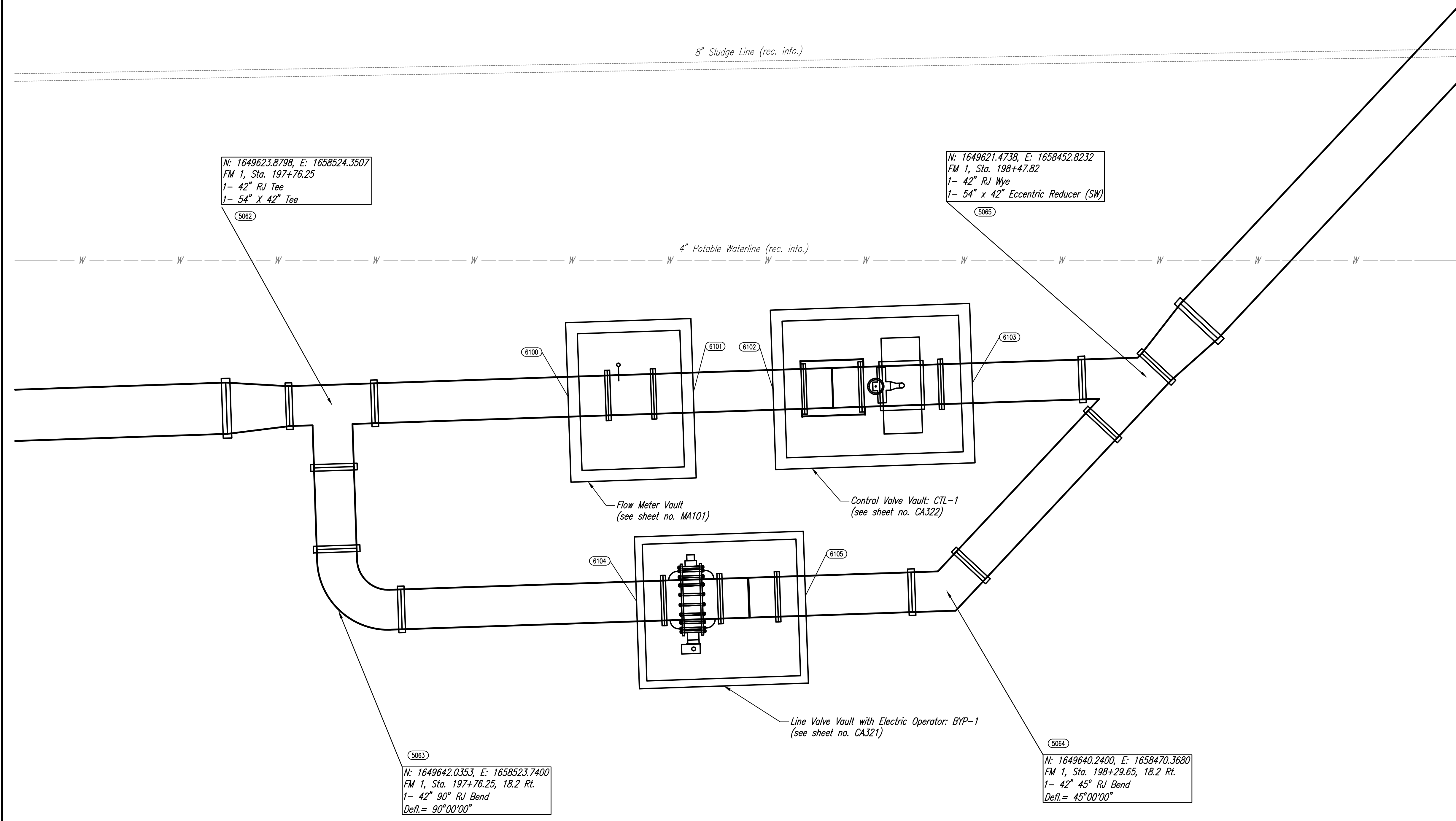


SCALE: 1" = 5'



| COORDINATE LIST | | |
|-----------------|----------------|----------------|
| POINT | NORTHING | EASTING |
| 6100 | 1,649,623.1822 | 1,658,503.6125 |
| 6101 | 1,649,622.8124 | 1,658,492.6187 |
| 6102 | 1,649,622.5771 | 1,658,485.6226 |
| 6103 | 1,649,621.9887 | 1,658,468.1325 |
| 6104 | 1,649,641.1562 | 1,658,497.6056 |
| 6105 | 1,649,640.6573 | 1,658,482.7740 |



N: 1649623.8798, E: 1658524.3507
 FM 1, Sta. 197+76.25
 1- 42" RJ Tee
 1- 54" X 42" Tee

N: 1649621.4738, E: 1658452.8232
 FM 1, Sta. 198+47.82
 1- 42" RJ Wye
 1- 54" x 42" Eccentric Reducer (SW)

N: 1649642.0353, E: 1658523.7400
 FM 1, Sta. 197+76.25, 18.2 Rt.
 1- 42" 90° RJ Bend
 Defl. = 90°00'00"

N: 1649640.2400, E: 1658470.3680
 FM 1, Sta. 198+29.65, 18.2 Rt.
 1- 42" 45° RJ Bend
 Defl. = 45°00'00"

ALL WORK FROM STA. 197+76.25 TO STA. 198+47.82 ASSOCIATED WITH THE FLOW METER, CONTROL VALVE, AND BYPASS AS SHOWN ON THIS SHEET SHALL BE PAID FOR AS THE LUMP SUM BID ITEM "CONTROL VALVE ASSEMBLY".

SAVED 07-17-2017 8:40:30 AM BY KURTIS DEKAT
 Plot Scale 1:1 07-17-2017 8:18:20 AM BY KURTIS DEKAT
 U:\Wichita-Civil\2015\15554\001\Drawings\Phase 2\15554-001-CA318-CONTROL VALVE ASSEMBLY SITE DETAIL

| | | | |
|---|----------|---------|------------------|
| No. | Revision | By | Date |
| WASTEWATER PLANT 2 INFLUENT FORCE MAIN - PHASE 2 CONTROL VALVE ASSEMBLY DETAIL GARY JANZEN, P.E. - CITY ENGINEER CITY OF WICHITA PROJECT NO. 468-85202 | | | |
| | | | |
| Designed by | MDK, TBK | Job No. | 35-15554-1-0042 |
| Drawn by | CSL, KTD | Date | NOVEMBER 2016 |
| | | | Sht. CA318 of 60 |