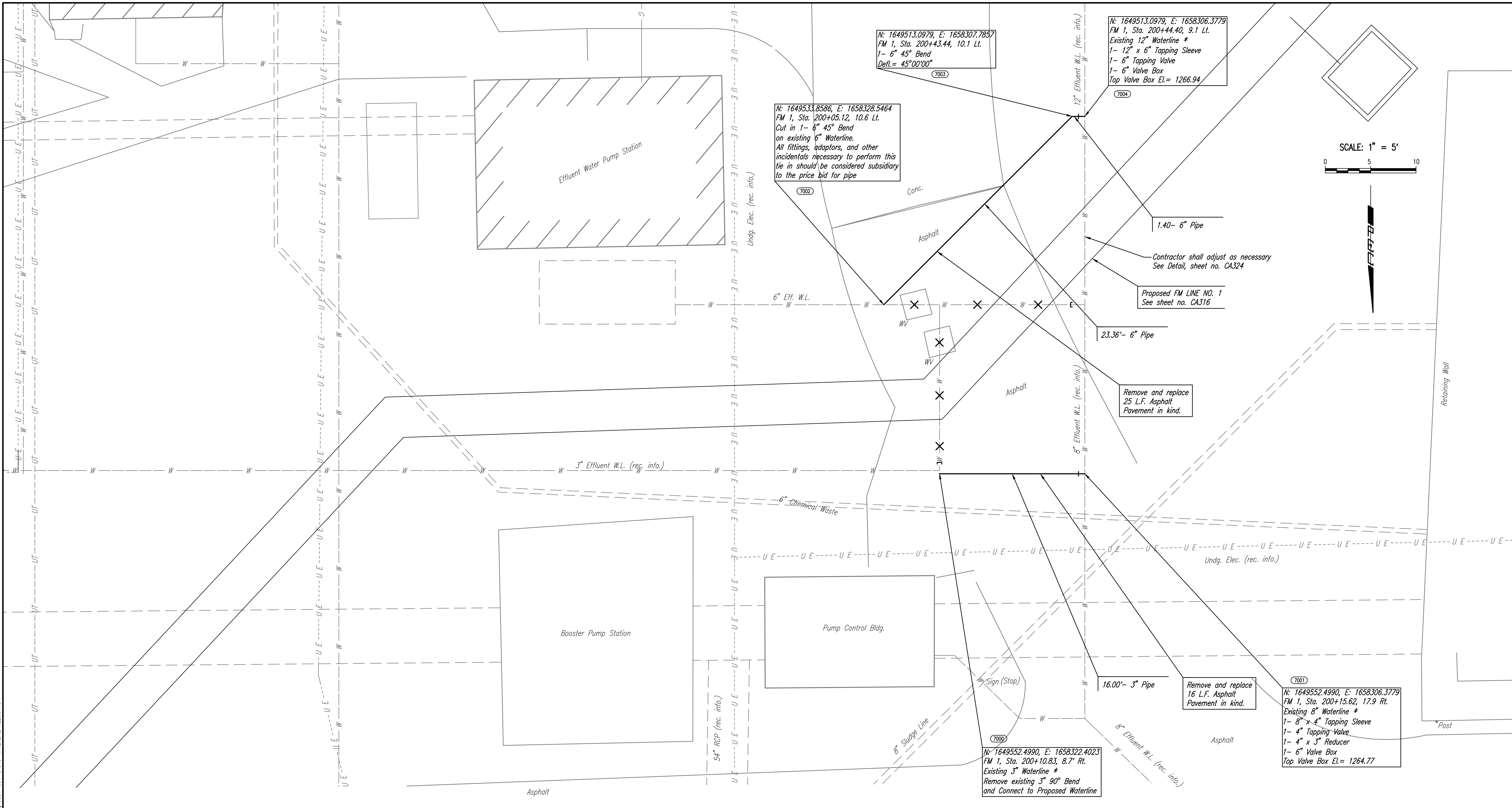


Served 07-13-2017 8:47:27 AM by KURPIS.DEKAT
 Plot Scale 1:1 07-17-2017 9:18:35 AM by KURPIS.DEKAT
 U:\Wichita-Civil\2015\15554-001\Drawings\Phase 2\15554-001-CA319-WATERLINE RELOCATION



SCALE: 1" = 5'



N: 1649533.8586, E: 1658328.5464
 FM 1, Sta. 200+05.12, 10.6 Lt.
 Cut in 1- 6" 45° Bend
 on existing 6" Waterline.
 All fittings, adaptors, and other
 incidentals necessary to perform this
 tie in should be considered subsidiary
 to the price bid for pipe

N: 1649513.0979, E: 1658307.7857
 FM 1, Sta. 200+43.44, 10.1 Lt.
 1- 6" 45° Bend
 Defl. = 45°00'00"

N: 1649513.0979, E: 1658306.3779
 FM 1, Sta. 200+44.40, 9.1 Lt.
 Existing 12" Waterline *
 1- 12" x 6" Tapping Sleeve
 1- 6" Tapping Valve
 1- 6" Valve Box
 Top Valve Box El. = 1266.94

Remove and replace
 25 L.F. Asphalt
 Pavement in kind.

Remove and replace
 16 L.F. Asphalt
 Pavement in kind.

N: 1649552.4990, E: 1658322.4023
 FM 1, Sta. 200+10.83, 8.7' Rt.
 Existing 3" Waterline *
 Remove existing 3" 90° Bend
 and Connect to Proposed Waterline

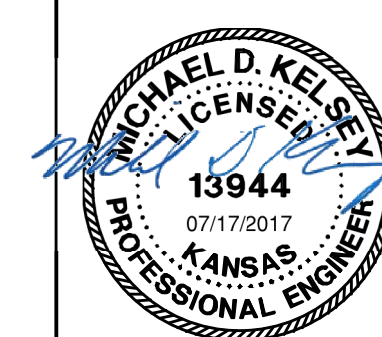
N: 1649552.4990, E: 1658306.3779
 FM 1, Sta. 200+15.62, 17.9 Rt.
 Existing 8" Waterline *
 1- 8" x 4" Tapping Sleeve
 1- 4" Tapping Valve
 1- 4" x 3" Reducer
 1- 6" Valve Box
 Top Valve Box El. = 1264.77

COORDINATE LIST		
POINT	NORTHING	EASTING
7000	1,649,552.4990	1,658,322.4023
7001	1,649,552.4990	1,658,306.3779
7002	1,649,533.8586	1,658,328.5464
7003	1,649,513.0979	1,658,307.7857
7004	1,649,513.0979	1,658,306.3779

LEGEND
 X = DENOTES WATERLINE TO BE ABANDONED IN PLACE.
 [] = DENOTES CAP/PLUG BY THE CONTRACTOR.
 (INCLUDES REMOVAL AND REPLACEMENT OF PAVEMENT)

ALL WORK ASSOCIATED WITH THE WATERLINE RELOCATION AS SHOWN ON THIS SHEET
 SHALL BE PAID FOR AS THE LUMP SUM BID ITEM "WATERLINE RELOCATION".

* PRIOR TO BEGINNING CONSTRUCTION, THE CONTRACTOR SHALL EXCAVATE THE EXISTING
 WATERLINES TO VERIFY PIPE SIZE, TYPE, FITTINGS, AND HORIZONTAL AND VERTICAL LOCATION.
 THE CONTRACTOR SHALL REPORT HIS FINDINGS TO THE ENGINEER SO THAT ANY NECESSARY
 PLAN MODIFICATIONS CAN BE MADE. ANY ADDITIONAL LABOR OR MATERIALS NECESSARY TO
 COMPLETE THE CONNECTION SHALL BE CONSIDERED SUBSIDIARY TO THE PROJECT.



No.	Revision	By	Date
WASTEWATER PLANT 2 INFLUENT FORCE MAIN - PHASE 2 WATERLINE RELOCATION GARY JANZEN, P.E. - CITY ENGINEER CITY OF WICHITA PROJECT NO. 468-85202			
		PROFESSIONAL ENGINEERING CONSULTANTS, P.A. 303 SOUTH TOPEKA WICHITA, KS 67202 316-262-2691 www.pec1.com	
Designed by	MDK, TBK	Job No.	35-15554-1-0042
Drawn by	CSL, KTD	Date	NOVEMBER 2016