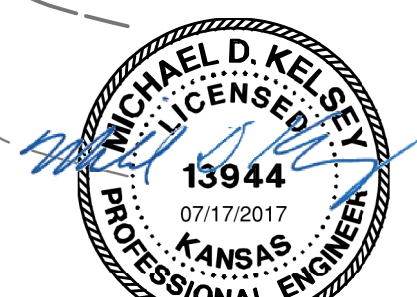
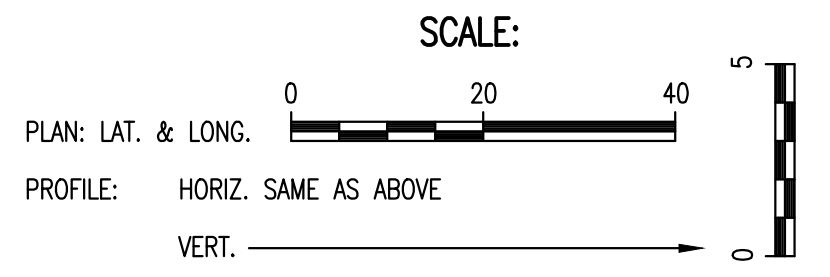
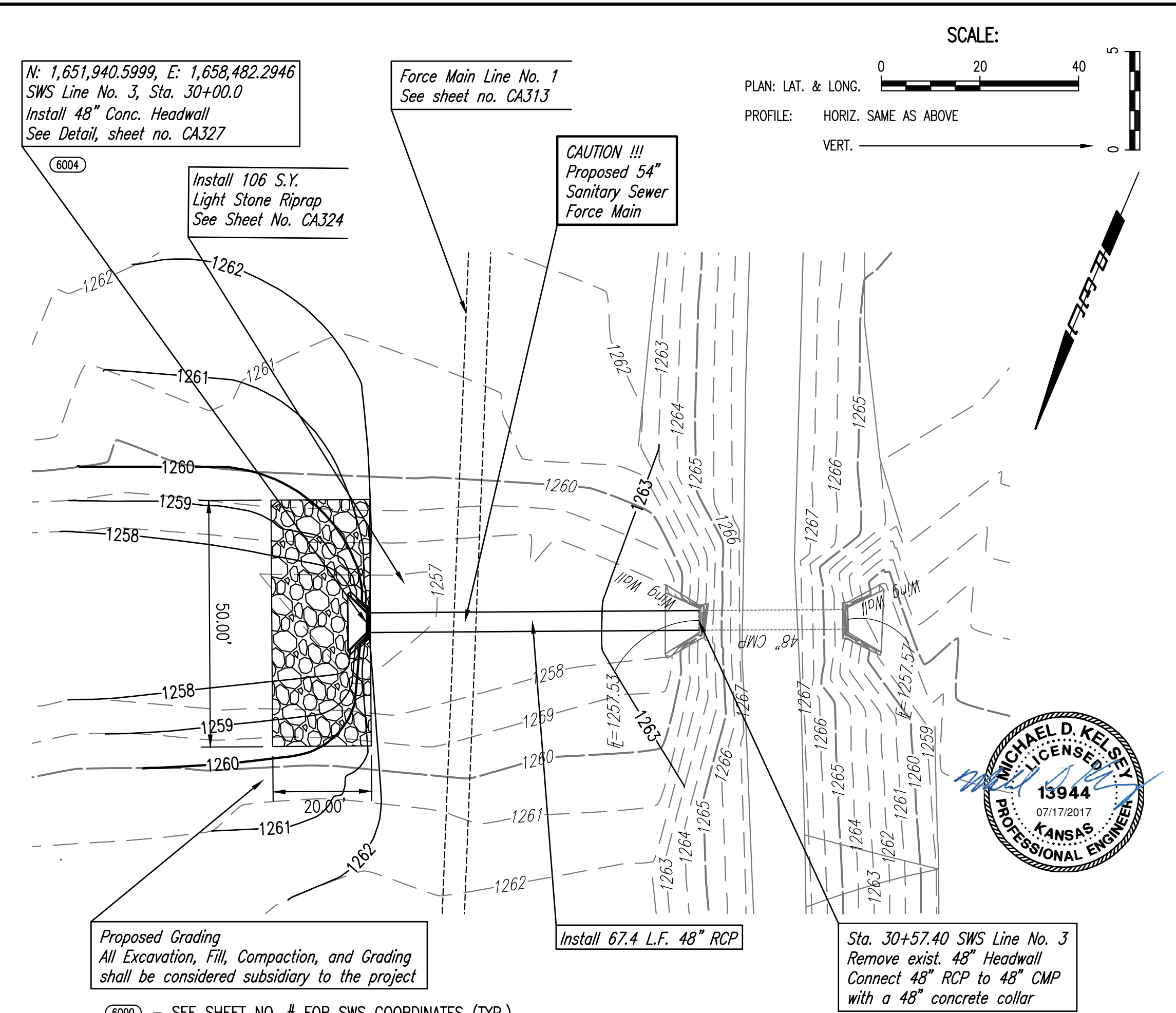
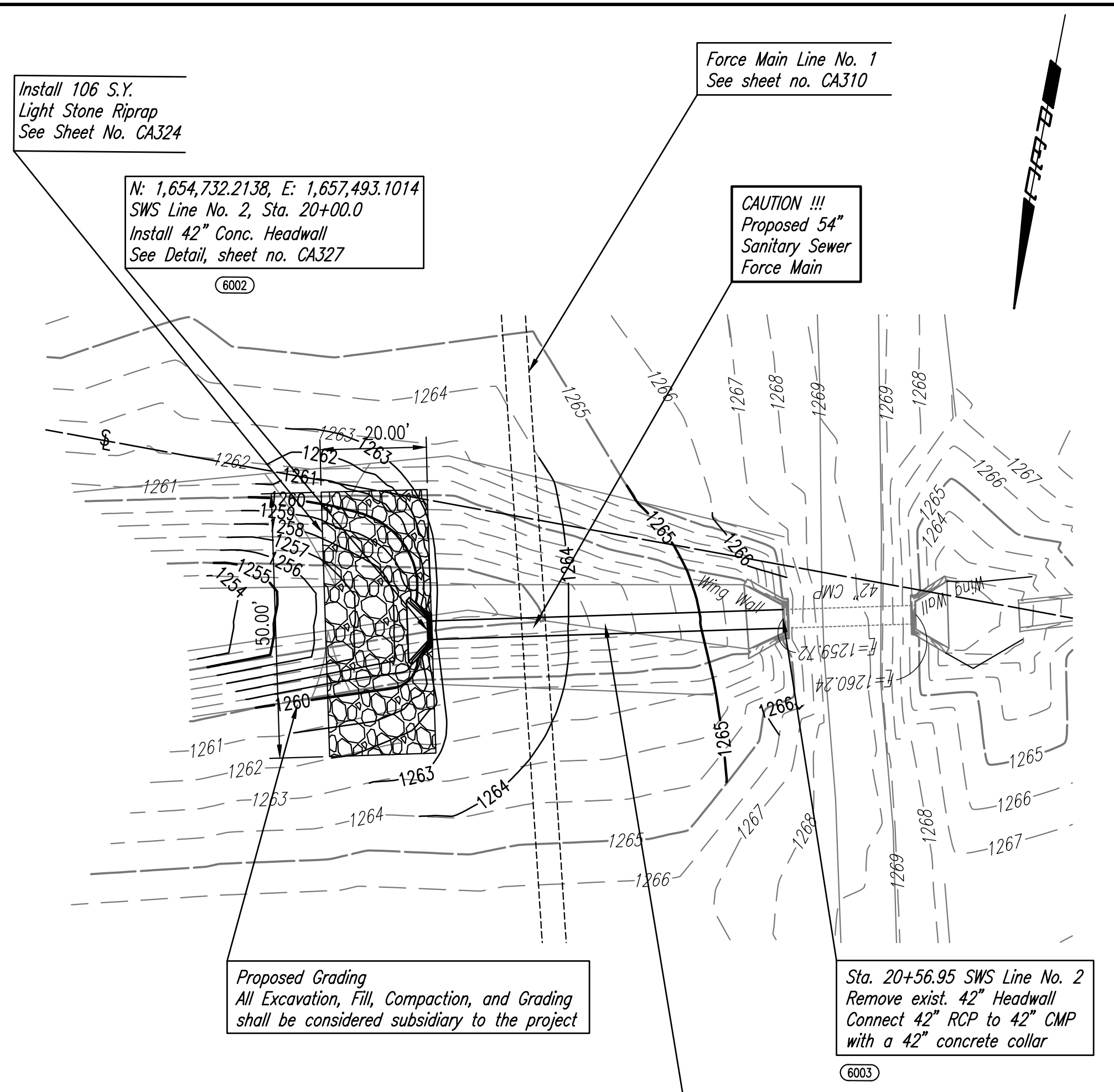
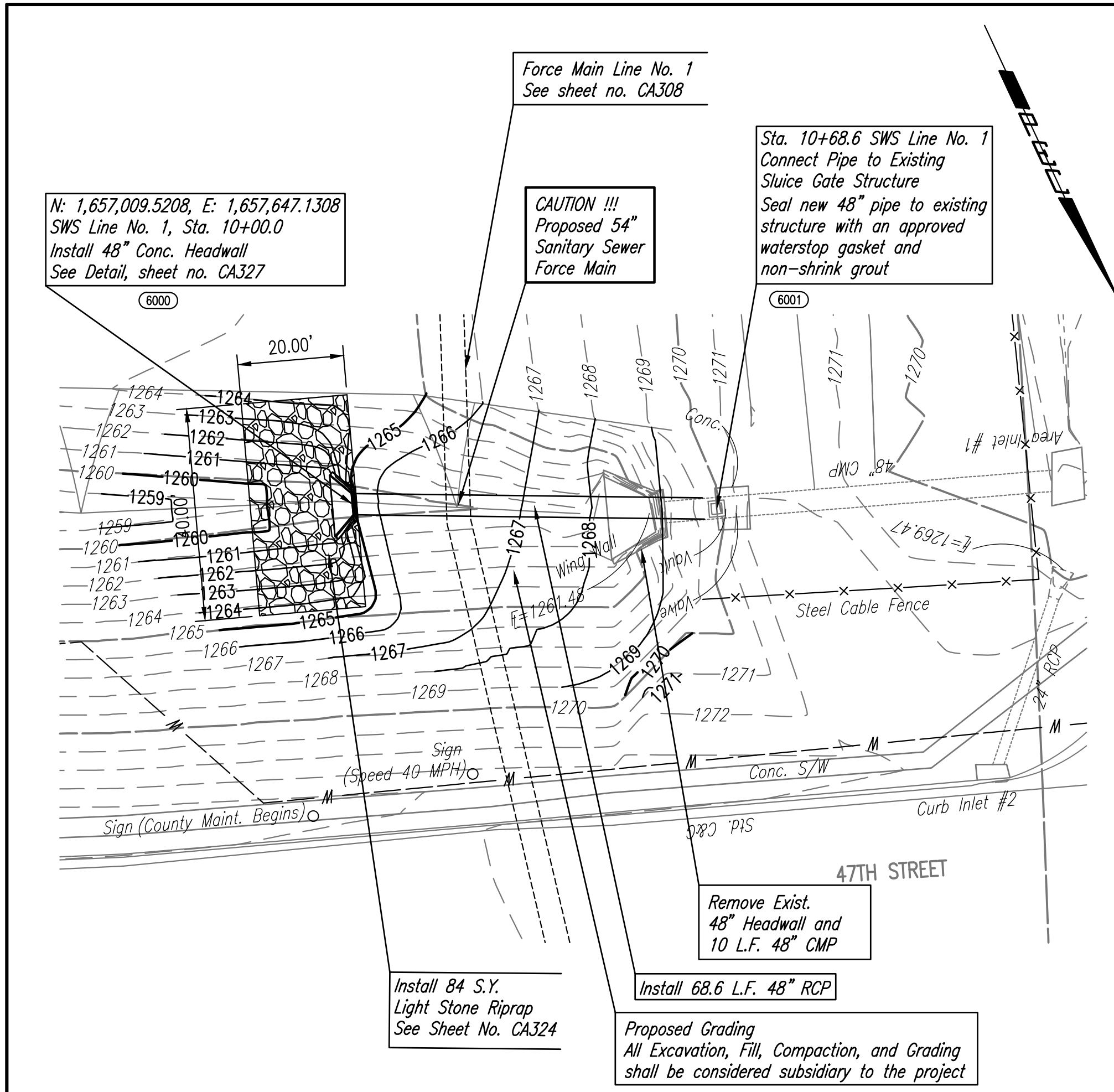


| | | |
|------|---------|------|
| PLAN | CHECKED | DATE |
| | CHECKED | |



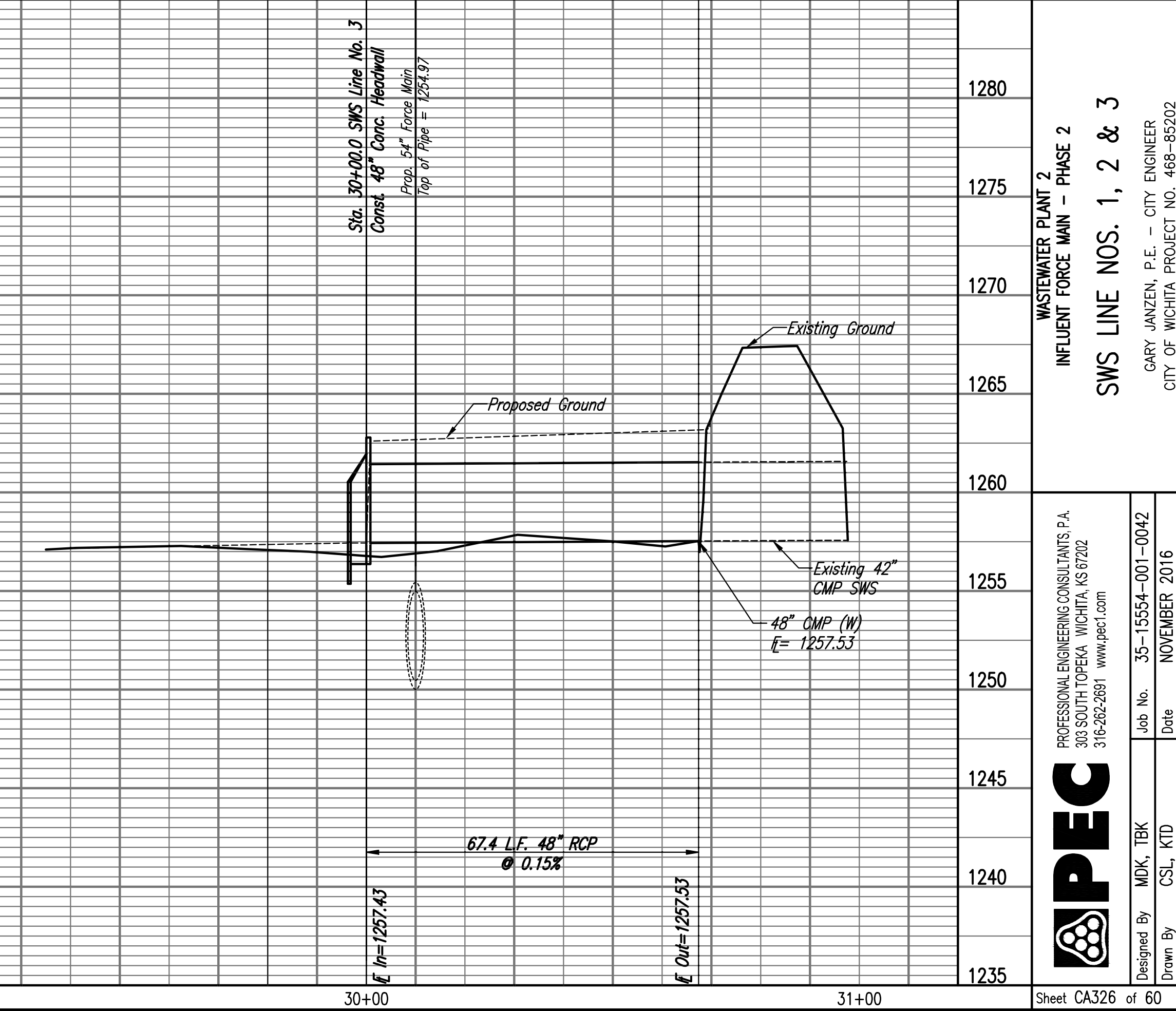
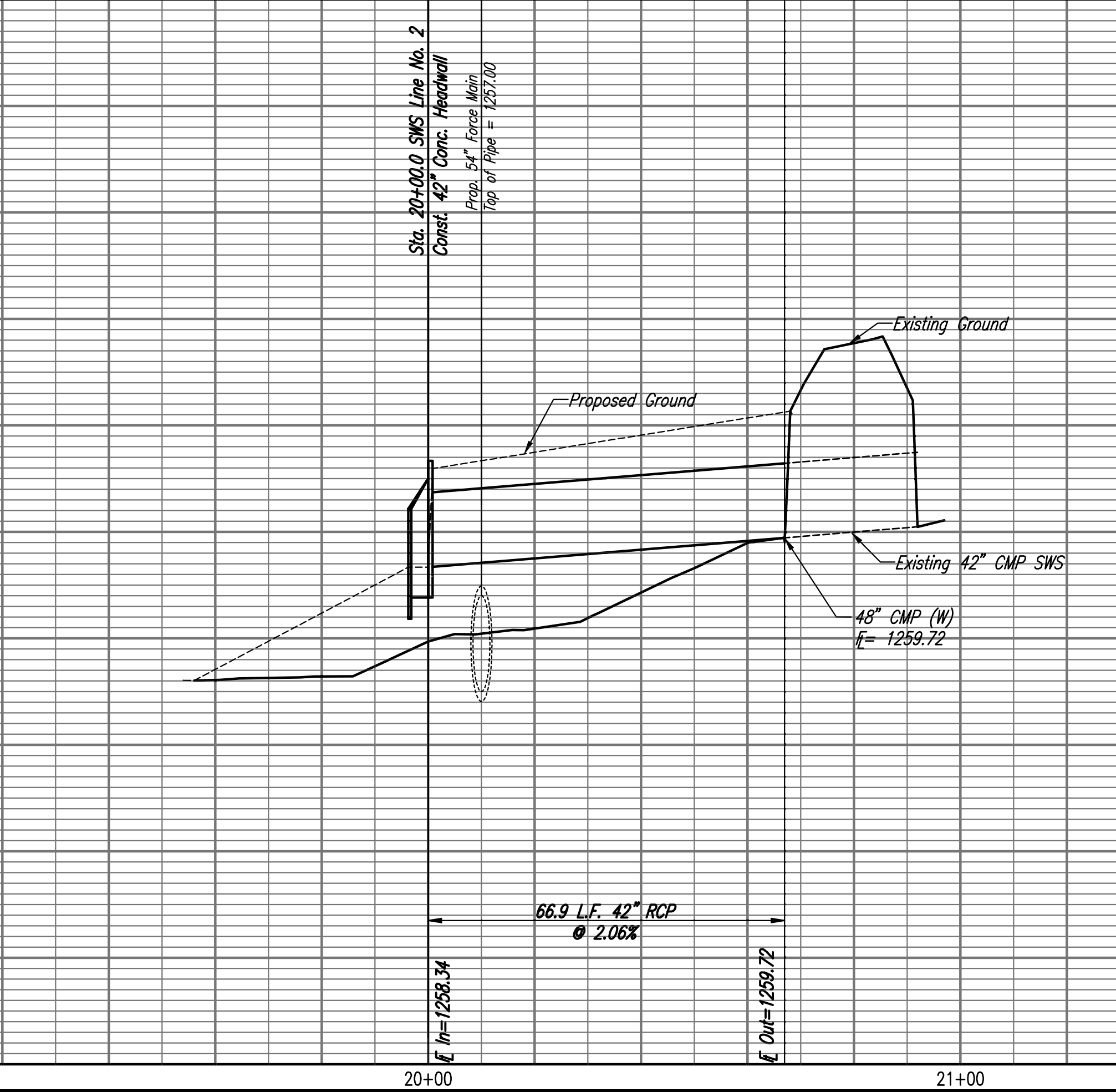
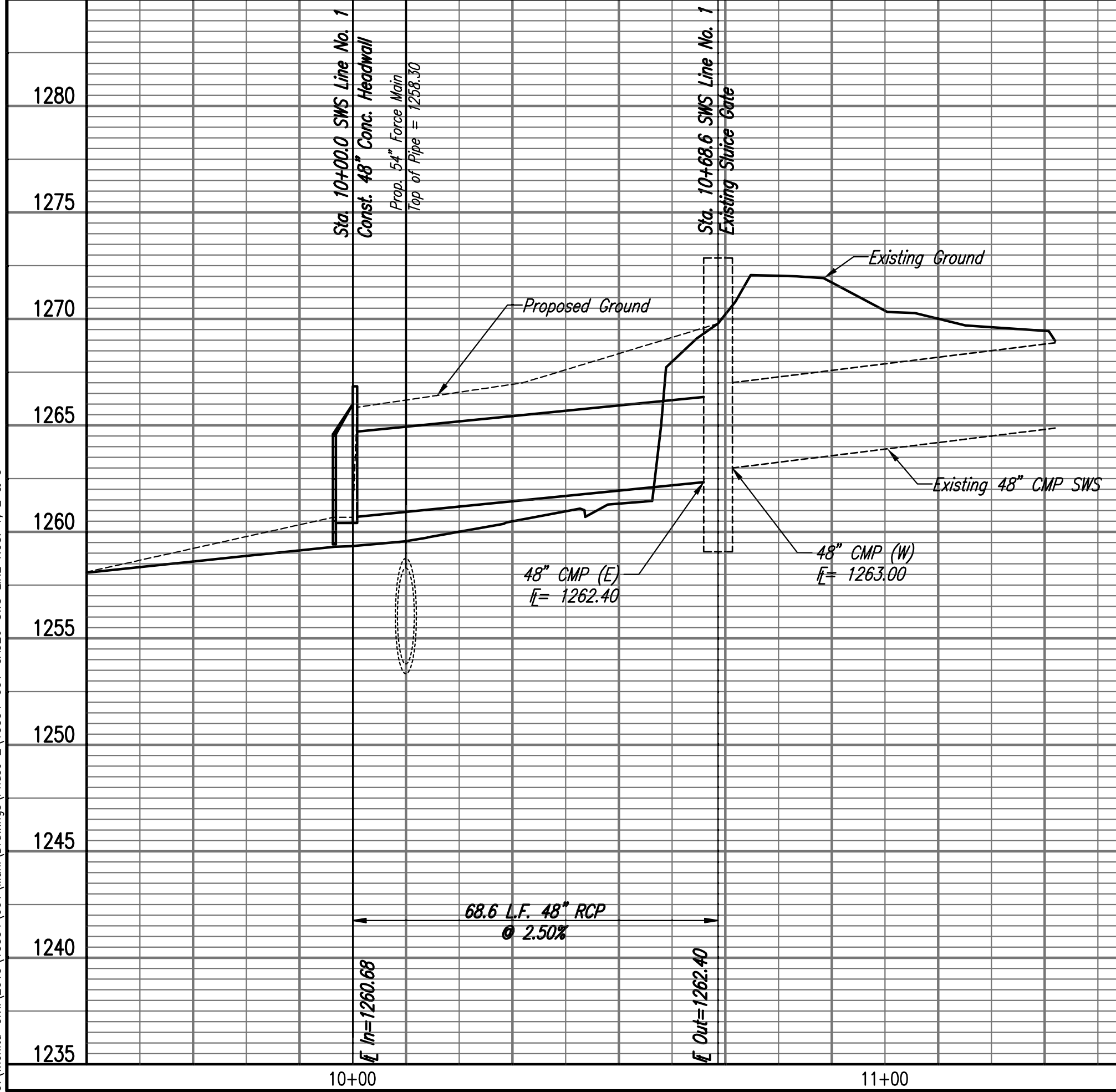
Unless noted otherwise, elevations shown are top of pipe

SWS LINE NO. 1

SWS LINE NO. 2

SWS LINE NO. 3

| | | |
|---------|---------|------|
| PROFILE | CHECKED | DATE |
| | CHECKED | |



Saved: 07-17-2017 8:50:23 AM by KURTIS DEKAT
 Plot Scale: 1" = 10'-0" (Horizontal), 1" = 4'-0" (Vertical)
 U:\Projects\2017\15554-001\Drawings\Phase 2\15554-001-C326-SWS LINE NOS. 1, 2 & 3

PEC
 PROFESSIONAL ENGINEERING CONSULTANTS P.A.
 303 SOUTH TOPEKA WICHITA, KS 67202
 316-262-2691 www.pec.com

WASTEWATER PLANT 2
 INFLUENT FORCE MAIN - PHASE 2
 SWS LINE NOS. 1, 2 & 3

Designed By: MDK, TBK
 Drawn By: CSL, KTD

Job No.: 35-15554-001-0042
 Date: NOVEMBER 2016

GARY JANZEN, P.E. - CITY ENGINEER
 CITY OF WICHITA PROJECT NO. 468-85202

Sheet CA326 of 60