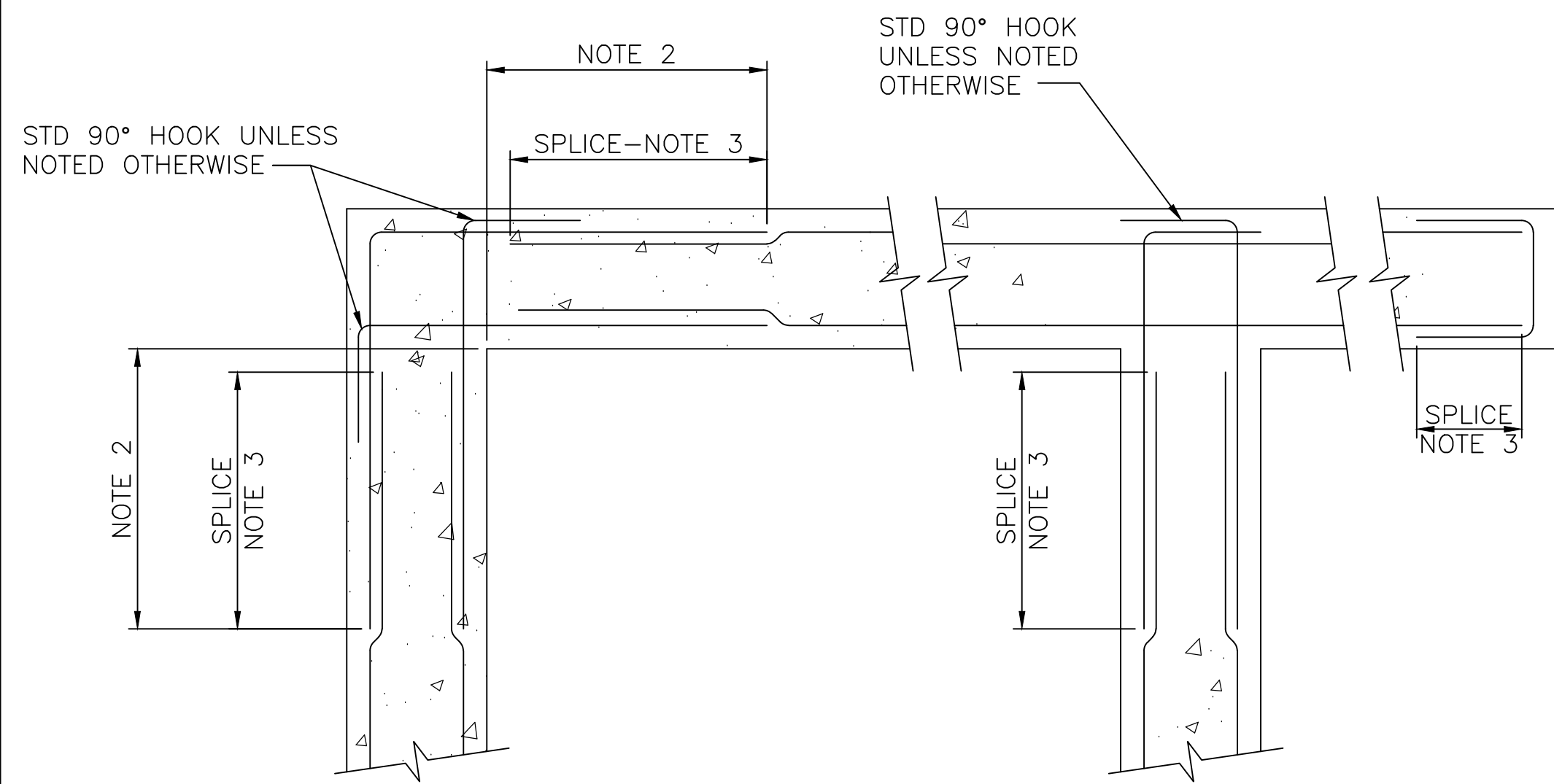


Sowed 07-07-2017 8:50:16 AM by ERSQUA
 Plot Scale 1:1 07-07-2017 10:42:30 AM by KURPIS.DENAT
 P:\Data\GEN\Wichita\149376_66-inch Foreman Design\DAO\2-Sheets\Structural\PHASE 2-METER WALL\149376S-0003



DOUBLE MAT REINFORCING

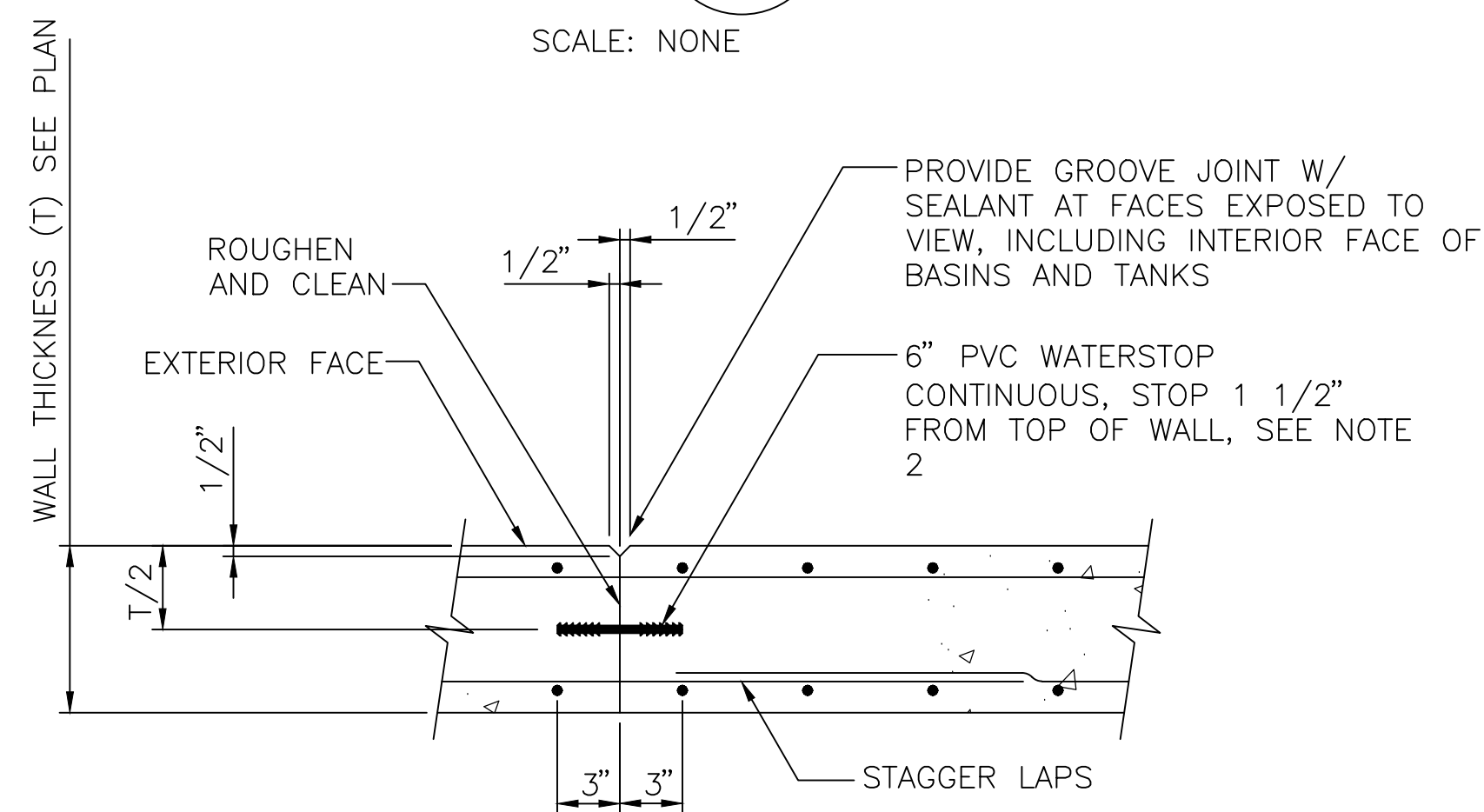
NOTES:

- UNLESS NOTED OTHERWISE, SIZE AND SPACING OF CORNER OR INTERSECTION REINFORCING SHALL MATCH HORIZONTAL REINFORCING SHOWN IN SPECIFIC SECTIONS OR DETAILS. VERTICAL REINFORCING NOT SHOWN FOR CLARITY.
- UNLESS NOTED OTHERWISE, BAR SPLICE SHALL BE LOCATED OUTSIDE OF CORNER OR INTERSECTION AREA TO AVOID CONGESTION. CONTRACTORS OPTION TO PROVIDE SINGLE BENT BAR IN LIEU OF SPLICE CONFIGURATION AT ONE END ONLY.
- SEE GENERAL STRUCTURAL NOTES FOR SPLICE LENGTH. HORIZONTAL WALL BARS SHALL BE CONSIDERED TOP BARS FOR DEVELOPMENT AND SPLICE LENGTHS.

TYPICAL HORIZONTAL WALL REINFORCING



SCALE: NONE



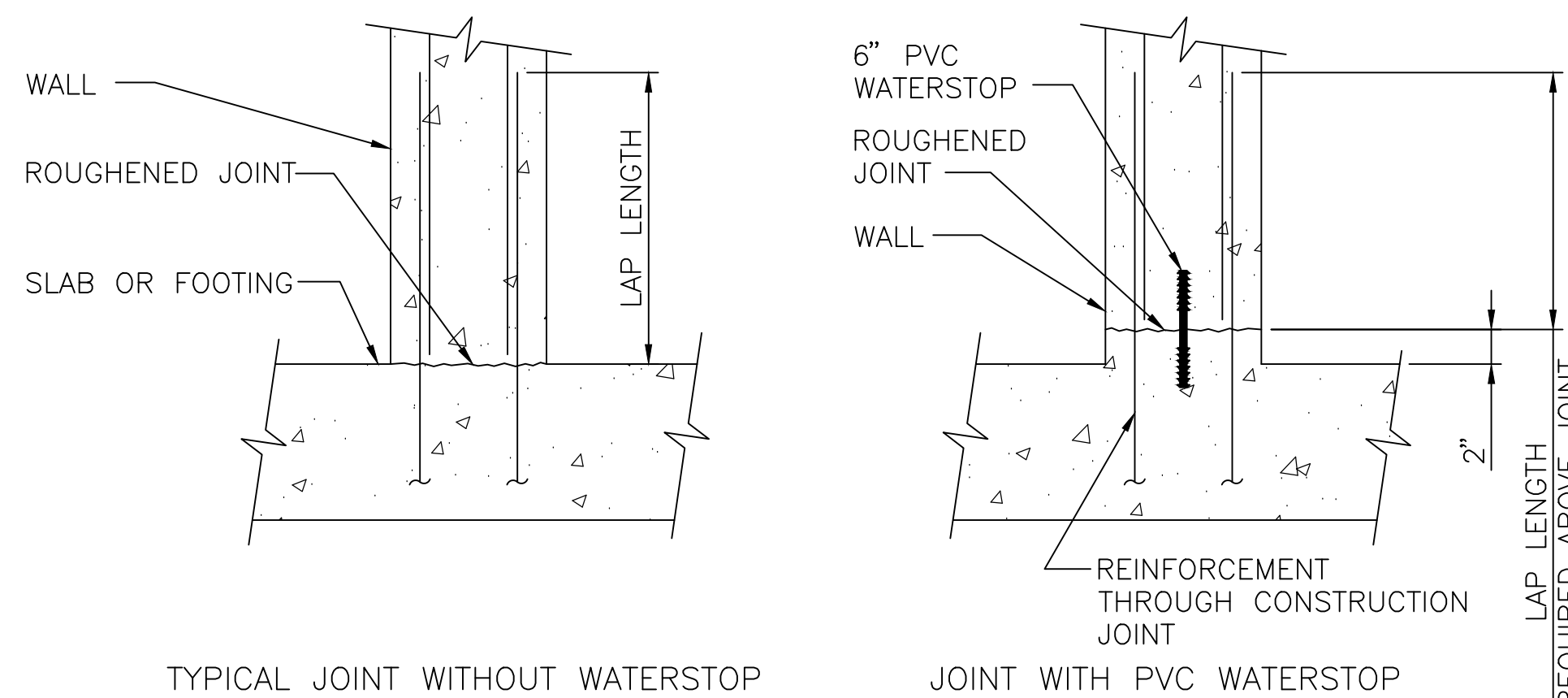
NOTES:

- ALL REINFORCING SHALL BE CONTINUOUS THROUGH JOINT.
- WATERSTOP REQUIRED AT LIQUID HOLDING BASINS AND TANKS, AND BELOW GRADE WALLS EXCEPT STEM WALLS TO SHALLOW FOOTINGS.

TYPICAL VERTICAL WALL CONSTRUCTION JOINT

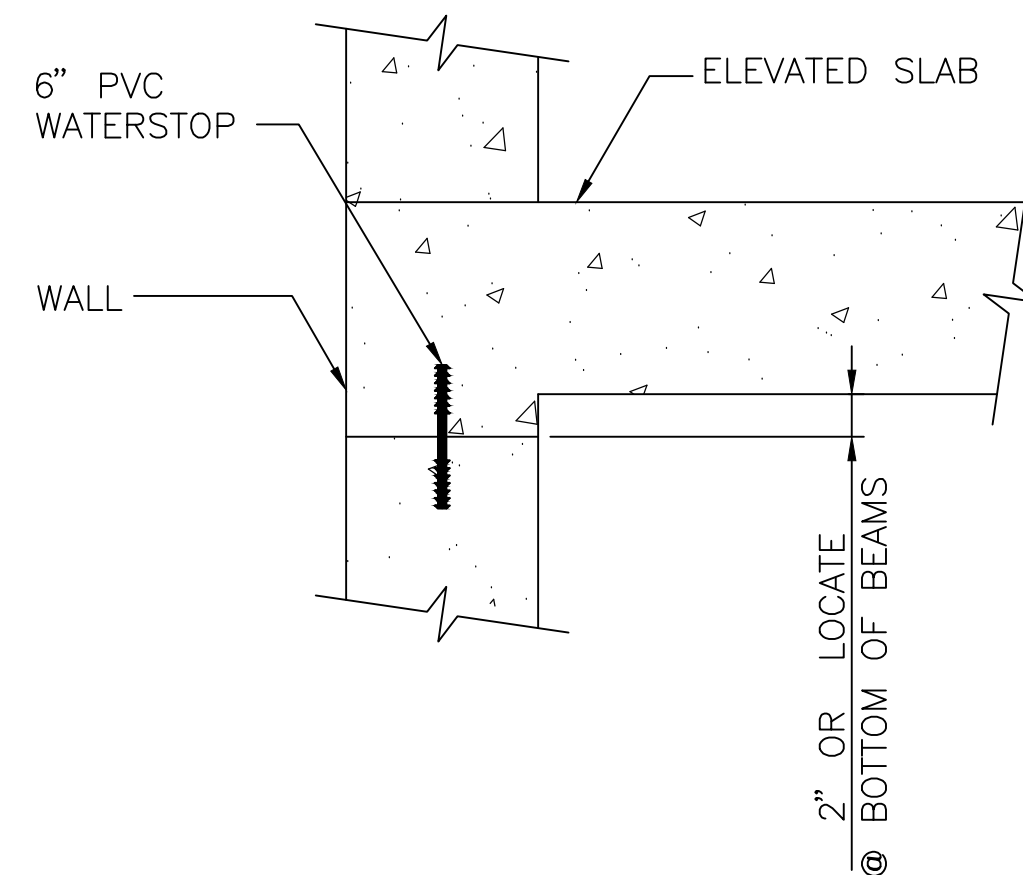


SCALE: NONE



TYPICAL JOINT WITHOUT WATERSTOP

JOINT WITH PVC WATERSTOP



WALL/ELEVATED SLAB JOINT WITH PVC WATERSTOP

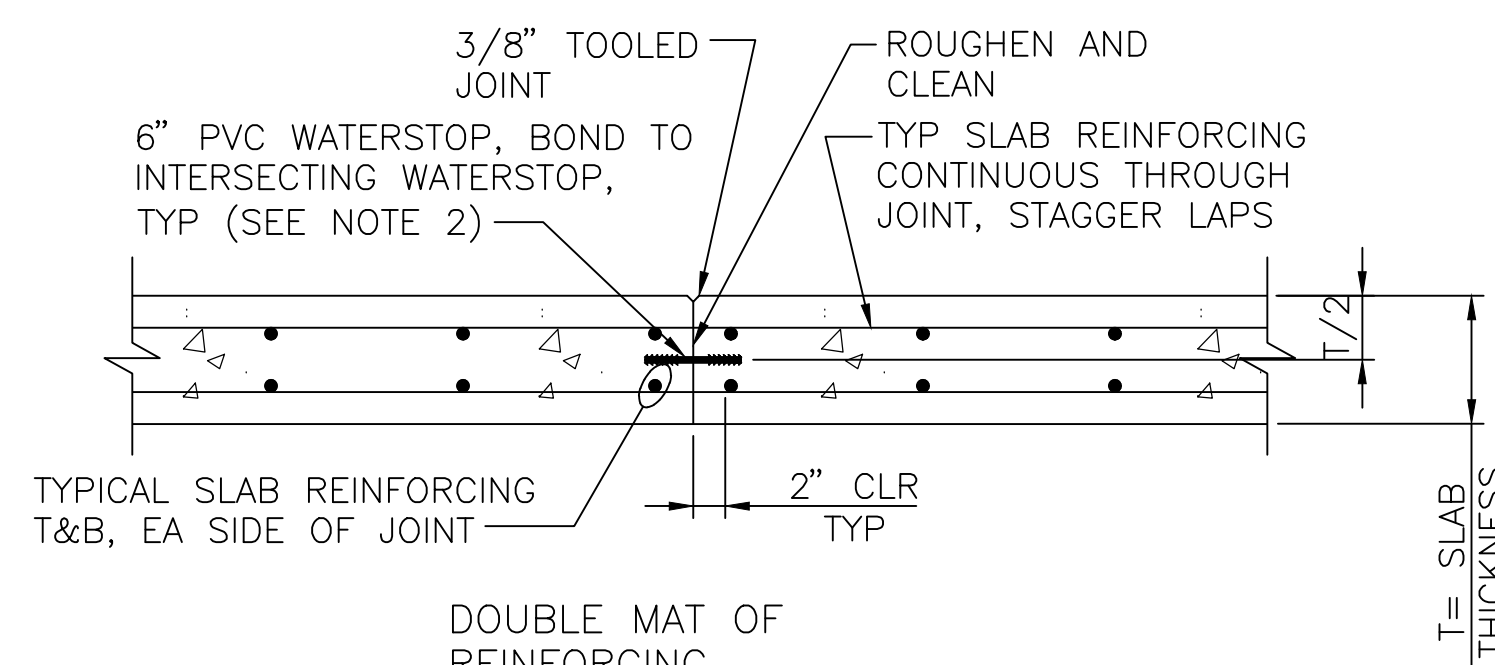
NOTES:

- SEE SECTIONS AND DETAILS FOR TYPE OF JOINT REQUIRED.
- ALL REINFORCING TO CONTINUE THROUGH JOINT.

TYPICAL HORIZONTAL CONSTRUCTION JOINT



SCALE: NONE



TYPICAL SLAB REINFORCING T&B, EA SIDE OF JOINT

DOUBLE MAT OF REINFORCING

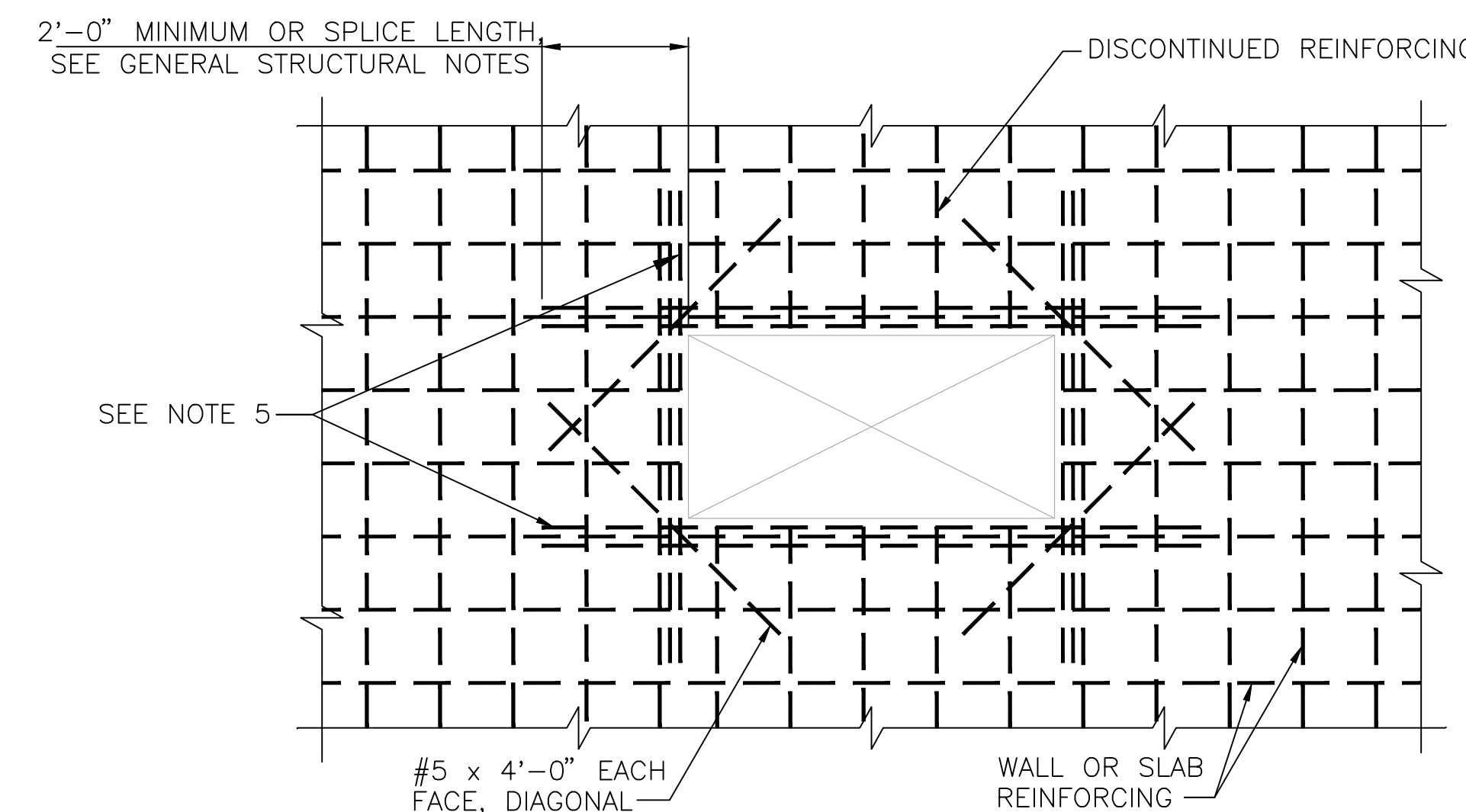
NOTES:

- ALL REINFORCING SHALL BE CONTINUOUS THROUGH JOINT.
- WATERSTOP REQUIRED AT LIQUID HOLDING BASINS AND TANKS, AND BELOW GRADE SLABS.

TYPICAL SLAB CONSTRUCTION JOINT

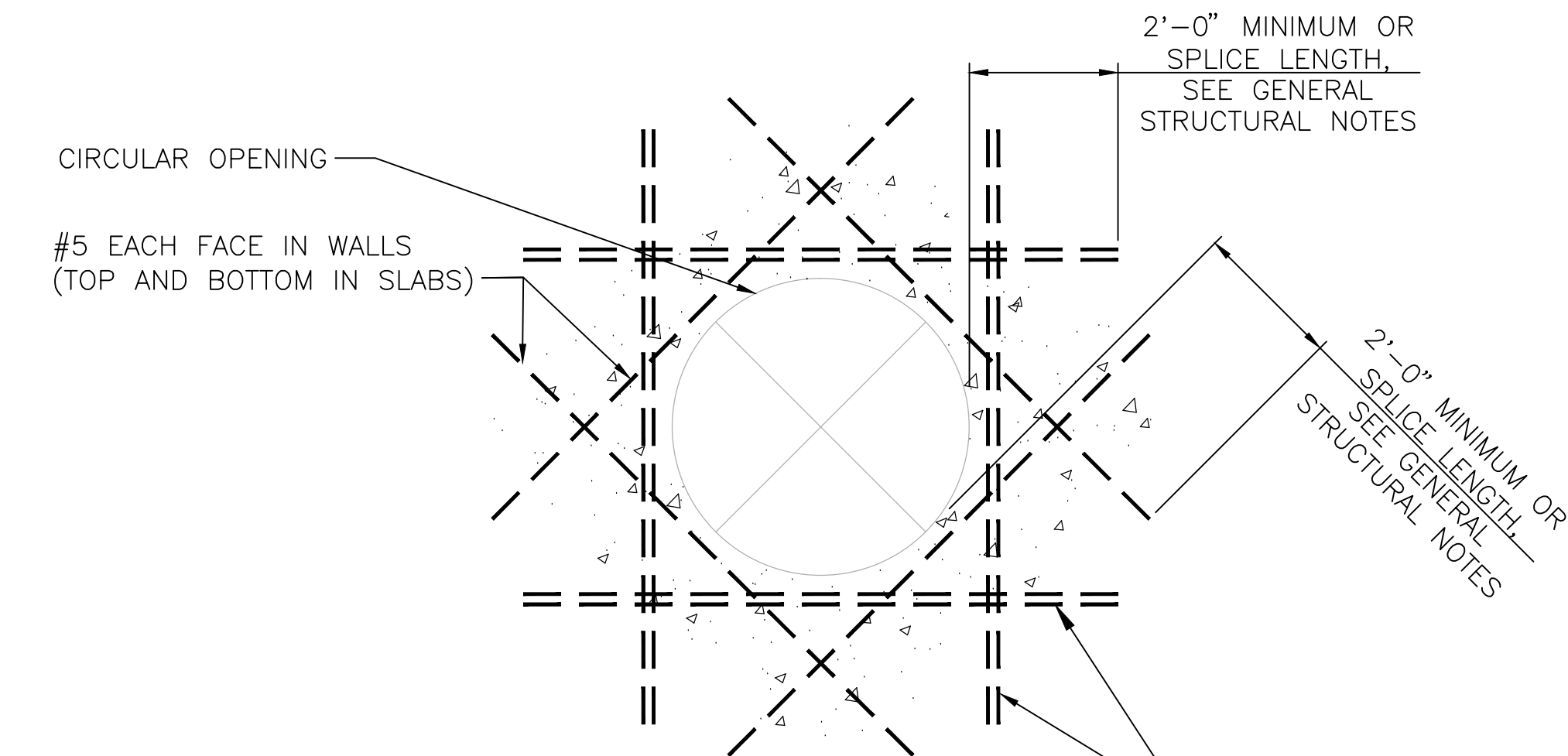


SCALE: NONE



SEE NOTE 5

CIRCULAR OPENING
#5 EACH FACE IN WALLS (TOP AND BOTTOM IN SLABS)



NOTES:

- THIS DETAIL APPLIES TO UP TO 8'-0" MAXIMUM DIMENSION FOR RECTANGULAR OPENINGS AND UP TO 8'-0" DIAMETER FOR CIRCULAR OPENINGS.
- AT OPENINGS 12" OR LESS, NO ADDITIONAL #5 DIAGONAL REINFORCING IS REQUIRED UNLESS NOTED OTHERWISE. REINFORCING SHALL BE OFFSET, STILL MAINTAINING REQUIRED SPACING, TO ALLOW FOR OPENING WHERE PRACTICAL, OR CUT AT THE OPENING AND ADDITIONAL REINFORCING ADDED PER NOTE 5.
- OPENINGS ARE NOT ALL SHOWN ON STRUCTURAL DRAWINGS. PROVIDE OPENINGS IN ACCORDANCE WITH ARCHITECTURAL, MECHANICAL AND OTHER CONTRACT DRAWINGS.
- ADDITIONAL REINFORCEMENT MAY BE OMITTED ONLY WHERE OPENING IS FRAMED BY BEAMS OR WALLS.
- ADDITIONAL REINFORCING (4) SIDES OF OPENING EQUAL TO NUMBER AND SIZE OF DISCONTINUOUS REINFORCING. WHERE AN ODD NUMBER OF REBAR ARE DISCONTINUOUS, PROVIDE (ODD NO. +1)/2 EACH SIDE OF OPENING.

ADDITIONAL REINFORCING AT OPENINGS



SCALE: NONE

90 PERCENT CLIENT REVIEW SUBMITTAL NOT FOR CONSTRUCTION



No.	Revision	By	Date
WASTEWATER PLANT 2 INFLUENT FORCE MAIN - PHASE 2 STRUCTURAL STANDARD DETAILS - 1 GARY JANZEN, P.E. - CITY ENGINEER CITY OF WICHITA PROJECT NO. 468-85118 PROFESSIONAL ENGINEERING CONSULTANTS, P.A. 303 SOUTH TOPEKA WICHITA, KS 67202 316-262-2691 www.pec1.com			
Designed by	J. SIMON	Job No.	35-15554-1-0042
Drawn by	R. BLUMENSHINE	Date	JULY 2017
			Sht. SA003 of 60