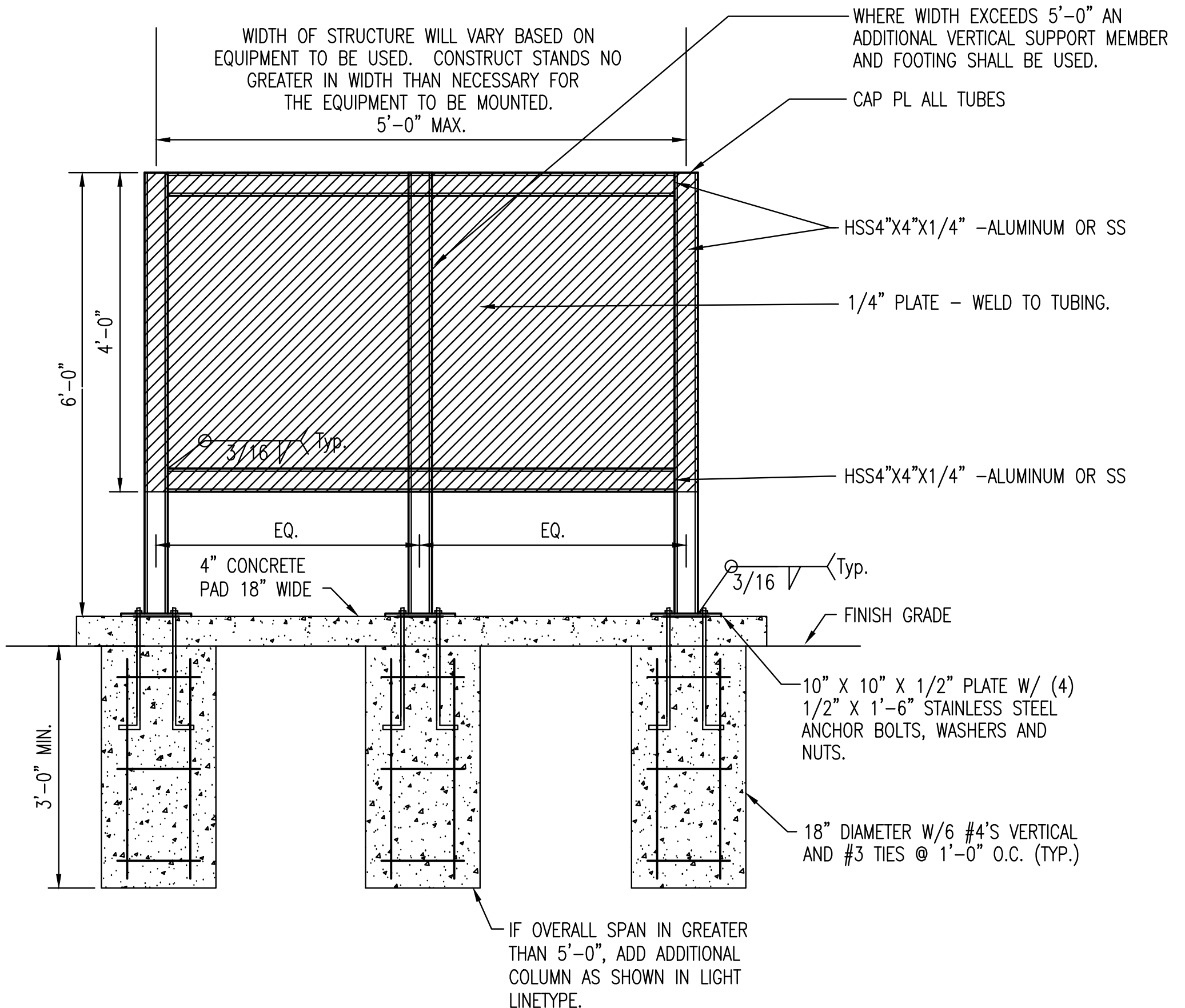


1 CONNECTION JUNCTION BOX DETAIL
NO SCALE

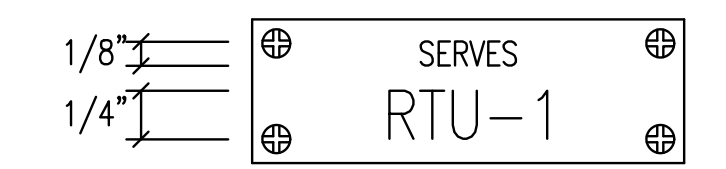


CONTRACTOR OPTION TO FABRICATE ENTIRE STRUCTURE OF STAINLESS STEEL OR ALUMINUM. IF STAND IS CONSTRUCTED OF STAINLESS STEEL THE SAME TUBING, PLATE SIZES, AND WELDS SHALL BE USED.

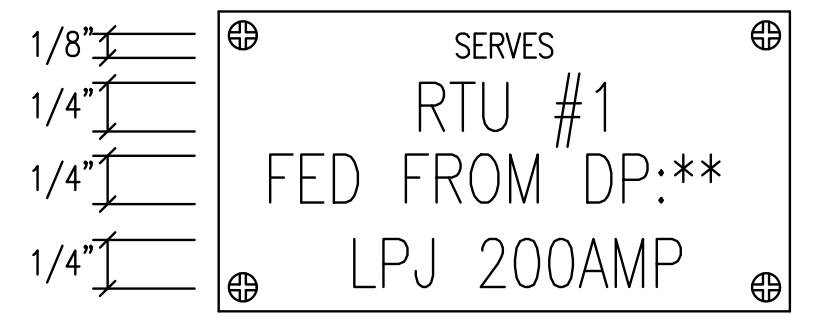
CONNECT ALL EQUIPMENT TO STRUCTURE USING STAINLESS STEEL BOLT AND/OR SCREWS.

IF ALUMINUM IS USED A 10" X 10" X 1/16" RUBBER PAD SHALL BE INSTALLED BETWEEN THE HOUSEKEEPING PAD AND THE PLATES AT THE BOTTOM OF EACH STAND VERTICAL MEMBER WHERE THEY ATTACH TO THE ANCHOR BOLTS

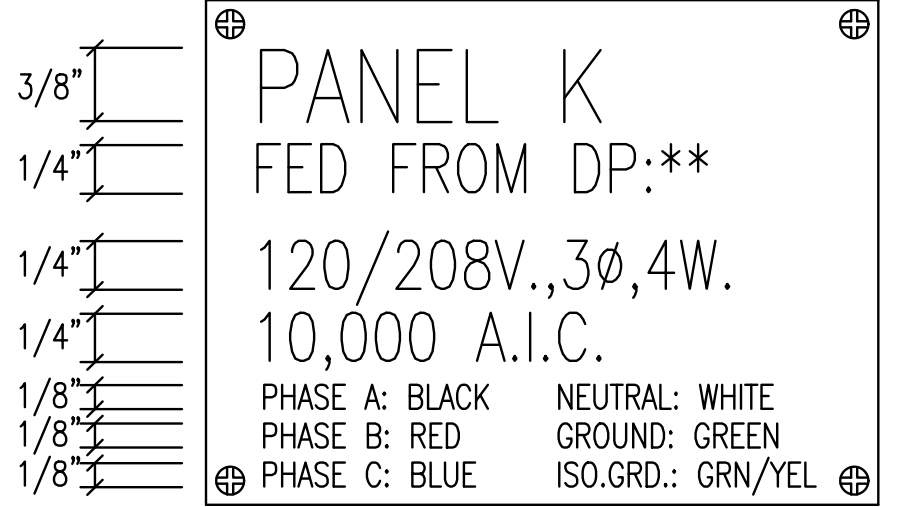
2 TYPICAL ELECTRICAL STRUCTURE DETAIL
NO SCALE



SWITCHBOARD/DISTRIBUTION PANEL/MOTOR CONTROL CENTER BREAKER/SWITCH




DISCONNECT SWITCH



BRANCH CIRCUIT/DISTRIBUTION PANEL

3 TYPICAL NAME PLATES
NO SCALE

Sowed: 07-17-2017 3:15:31 PM by JAMES GILLESPIE
 Plot Scale: 1:1 07-17-2017 4:05:06 PM by JAMES GILLESPIE
 U:\Wichita-Civil\2015\15554\001\Elec\Drawings\15554-001-e1.1 ELECTRICAL DETAILS

No.	Revision	By	Date
WASTEWATER PLANT 2 INFLUENT FORCE MAIN - PHASE 2 ELECTRICAL DETAILS GARY JANZEN, P.E. - CITY ENGINEER CITY OF WICHITA PROJECT NO. 468-85202			
 PEC PROFESSIONAL ENGINEERING CONSULTANTS, P.A. 303 SOUTH TOPEKA WICHITA, KS 67202 316-262-2691 www.pec1.com			
Designed by	RWW	Job No.	35-15554-1-0042
Drawn by	JBC	Date	NOVEMBER 2016
			Sht. EA101 of 60