

UTILITIES CONTACTS

LaDONNA LAWRENZ
WICHITA SANITARY SEWER
8TH FLOOR-CITY HALL
455 N. MAIN
WICHITA, KS 67202
(316) 268-4329

ZACH LAWS
WESTAR ENERGY
1900 E. CENTRAL (3RD FLOOR)
PO BOX 208
WICHITA, KS 67201
(316) 261-6264

GREG LOLLEY
WICHITA WATER
8TH FLOOR-CITY HALL
455 N. MAIN
WICHITA, KS 67202
(316) 268-4334

JASON EDWARDS
AT&T WICHITA CENTRAL UNIT
154 N. BROADWAY, RM 210
WICHITA, KS 67202
(316) 268-2008

JOE HICKLE
WICHITA STORM SEWER
8TH FLOOR-CITY HALL
455 N. MAIN
WICHITA, KS 67202
(316) 268-4307

JIM COE
KANSAS GAS SERVICE
1021 E. 26TH ST. NORTH
WICHITA, KS 67219
(316) 832-3126

MARC HENDERSON
COX COMMUNICATIONS
ENGINEERING DEPT.
901 GEORGE WASHINGTON BLVD.
WICHITA, KS 67211
(316) 260-7745

SUZETTE WILSON & KELLY KRAUS
BLACK HILLS ENERGY
2330 N. HOOVER RD.
WICHITA, KS 67205
SUZETTE WILSON (316) 941-1631
KELLY KRAUS (316) 941-1628

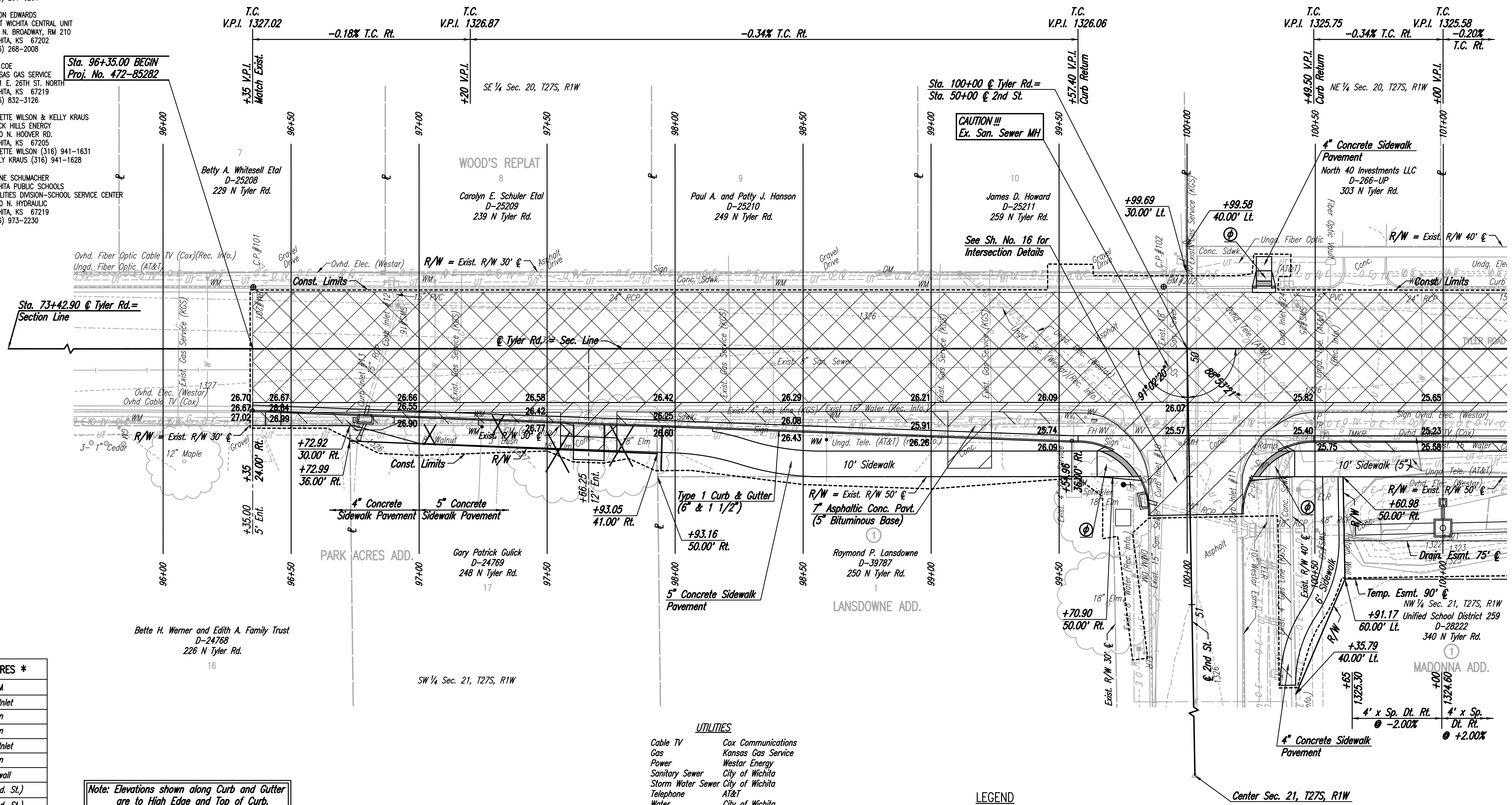
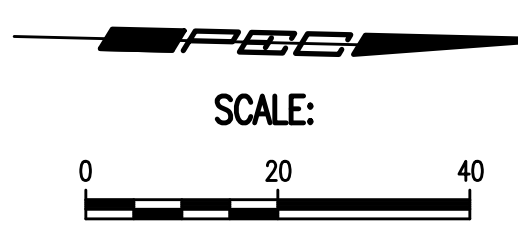
SHANE SCHUMACHER
WICHITA PUBLIC SCHOOLS
FACILITIES DIVISION-SCHOOL SERVICE CENTER
3850 N. HYDRAULIC
WICHITA, KS 67219
(316) 973-2230

P.I. @ Sta. 73+42.90=
SW Cor. Sec. 21, T27S, R1W
N 1,682,874.511 E 1,617,870.252
1. See Reference Below

CP #101 32.29' Lt. @ Sta. 96+38.44
1/2" rebar
N 1,685,168.583 E 1,617,782.063
1. 47.50' S to center power pole
2. 8.00' E to west back of curb, Tyler Road
3. 21.50' SSE to center water meter

CP #102 31.38' Lt. @ Sta. 99+90.97
1/2" rebar
N 1,685,521.036 E 1,617,774.384
1. 7.20' E to back west curb Tyler Road
2. 8.00' N to center of guy pole
3. 7.30' NW to guy anchor

P.I. @ Sta. 100+00.00=
W 1/4 Cor. Sec. 21, T27S, R1W
N 1,685,530.823 E 1,617,805.533
1. See Reference Below



REMOVAL OF EXISTING STRUCTURES *

STATION	SIDE	ITEM
96+79	Rt.	Curb Inlet
98+31	Rt.	Sign
99+74	Rt.	Sign
99+81	Rt.	Curb Inlet
100+81	Rt.	Sign
100+65	Rt.	Headwall
50+47	Lt.	Sign (2nd. St.)
50+53	Rt.	Sign (2nd. St.)

* For Information Only

Note: Elevations shown along Curb and Gutter are to High Edge and Top of Curb.

- UTILITIES**
- Cable TV
 - Gas
 - Power
 - Sanitary Sewer
 - Storm Water Sewer
 - Telephone
 - Water
 - Cox Communications
 - Kansas Gas Service
 - Westar Energy
 - City of Wichita
 - City of Wichita
 - City of Wichita

- LEGEND**
- Mill/Overlay
 - Pavement Removal
 - Sidewalk Removal
 - Wheelchair Ramp with Detectable Warning
 - Denotes trees to be removed

SW Cor. Sec. 21, T27S, R1W
N 1,682,874.511 E 1,617,870.252
1. Found 3/4" Iron Pipe in Thimble, Maple and Tyler
2. To Chiseled cross in SE bolt of signal base 49.23' NW
3. To Chiseled cross in SW corner of curb island 42.74' NE
4. To Chiseled cross in NW corner of signal pole base 73.94' SE
5. To Chiseled cross in NE corner of signal pole base 59.77' SW

Center Sec. 21, T27S, R1W
N 1,685,643.041 E 1,620,446.292
1. Found 1/2" Iron Pipe
2. To Wood Fence
3. To South end of Wood Fence
4. To Chiseled cross on top of curb
8.32' W
23.27' S
14.81' ENE

West 1/4 Cor. Sec. 21, T27S, R1W
N 1,685,530.783 E 1,617,805.537
1. Found 3/4" Iron Pipe in Thimble, Tyler Rd. and 2nd St.
2. To Chiseled cross on top of curb 52.65' SE
3. To 3/4" Iron Pipe 58.13' ESE
4. To Chiseled cross on top of curb 57.78' NE

BM #201-Chiseled square on west top of curb Tyler Road at south end of curb return (229 N. Tyler Road).
24.14' Lt. @ Sta. 96+35.23 Elev.=1326.26 (NAVD88)

BM #202-Chiseled square on west top of curb Tyler Road at north property line extended (259 N. Tyler Road).
24.19' Lt. @ Sta. 99+90.85 Elev.=1325.53 (NAVD88)

No.	Revision	By	Date
TYLER ROAD BETWEEN MAPLE AND CENTRAL PAVING AND INCIDENTAL DRAINAGE IMPROVEMENTS PLAN STA. 96+00 TO STA. 101+00 GARY JANZEN, P.E. - CITY ENGINEER CITY OF WICHITA PROJECT NO. 472-85282			
PROFESSIONAL ENGINEERING CONSULTANTS, P.A. 303 SOUTH TOPEKA WICHITA, KS 67202 316-262-2691 www.pec1.com			
Designed by	CKC	Job No.	31-15956-000
Drawn by	CP	Date	JULY 2017
			Sht. 04 of 96

Sowed: 07-27-2017 8:56:34 AM by CP
 Plot Scale: 1" = 40' - 07-27-2017 8:12:12 AM by CP
 U:\Projects\Civil\2015\15956\Drawings\15956-000-04C-Plan 95