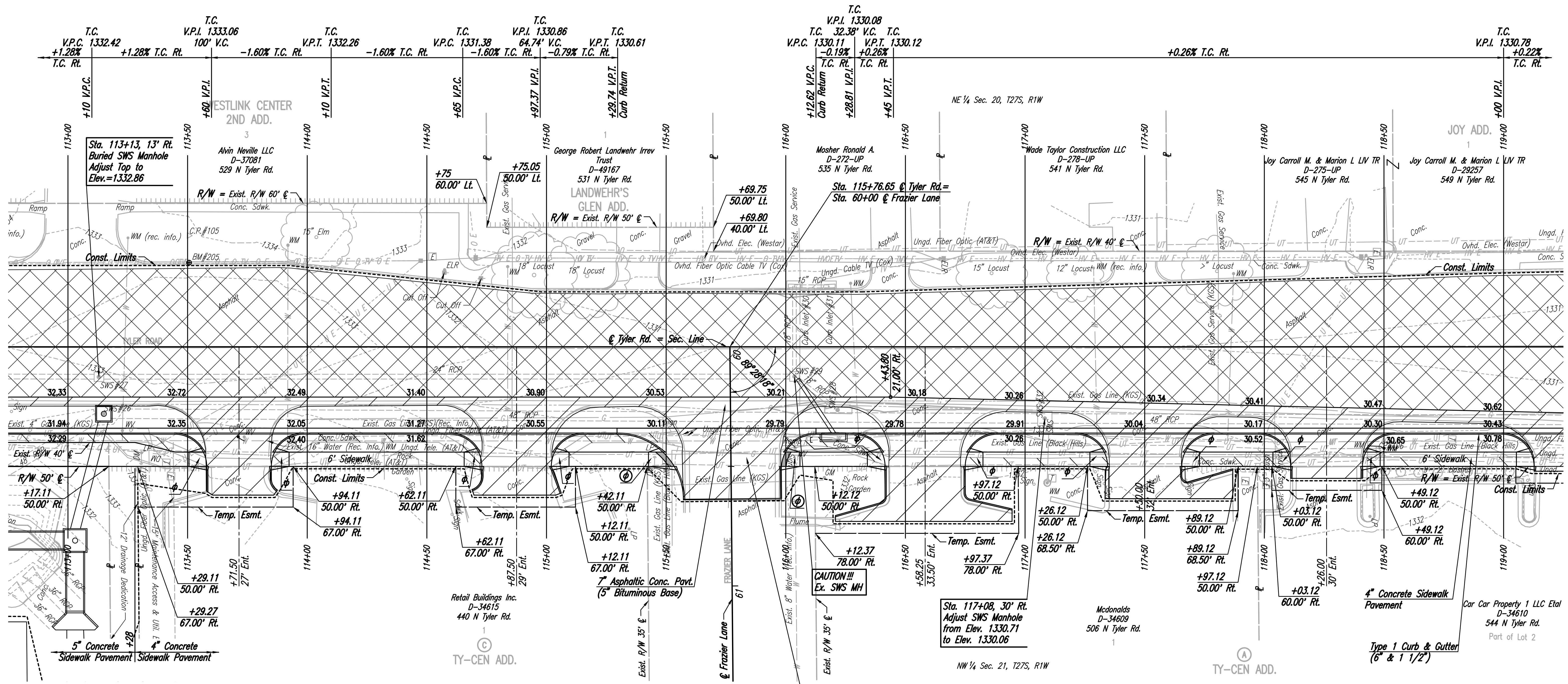


CP #105 46.56' Lt. @ Sta. 113+50.55
 1/2" rebar
 N 1,686,879.940 E 1,617,727.782

CP #106 43.19' Rt. @ Sta. 118+47.37
 1/2" rebar w/blue PEC Cap
 N 1,687,378.694 E 1,617,806.032
 1. 3.00' E to west edge sidewalk
 2. 9.50' S to north edge south Drive to O'Reillys
 3. 31.30' NNW to bell pedestal

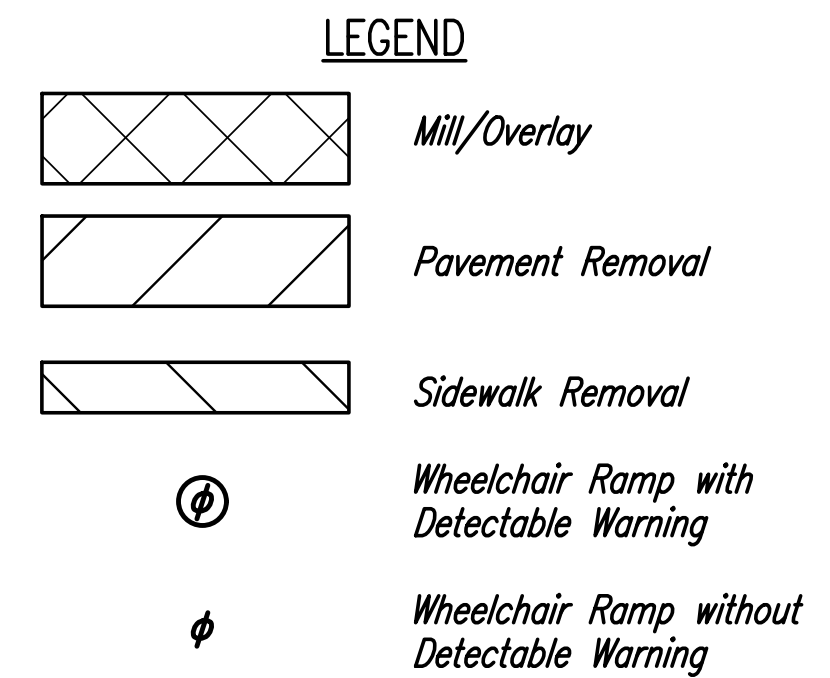


REMOVAL OF EXISTING STRUCTURES *		
STATION	SIDE	ITEM
113+15	Rt.	R.C. Manhole
115+48	Rt.	Sign
116+00	Rt.	Sign
116+22	Rt.	Curb Inlet
117+33	Rt.	Sign
117+67	Rt.	Sign

* For Information Only

Note: Elevations shown along Curb and Gutter are to High Edge and Top of Curb.

BM #205-Chiseled square on west top of curb Tyler Road north of auto zone entrance.
 35.22' Lt. @ Sta. 113+50.60 Elev.=1332.58 (NAVD88)



- UTILITIES**
- Cable TV
 - Gas
 - Gas
 - Power
 - Storm Water
 - Sewer
 - Telephone
 - Water
 - Cox Communications
 - Black Hills Energy
 - Kansas Gas Service
 - Westar Energy
 - City of Wichita
 - AT&T
 - City of Wichita

No.	Revision	By	Date
TYLER ROAD BETWEEN MAPLE AND CENTRAL PAVING AND INCIDENTAL DRAINAGE IMPROVEMENTS PLAN STA. 113+00 TO STA. 119+00 GARY JANZEN, P.E. - CITY ENGINEER CITY OF WICHITA PROJECT NO. 472-85282			
PROFESSIONAL ENGINEERING CONSULTANTS, P.A. 303 SOUTH TOPEKA WICHITA, KS 67202 316-262-2691 www.pec1.com			
Designed by	CKC	Job No.	31-15956-000
Drawn by	CP	Date	JULY 2017
			Sht. 07 of 96

Sowed: 07-27-2017 8:53:14 AM by CP
 Plot Scale: 1" = 40'-0" (1:480)
 U:\Projects\2017\15956\Drawings\15956-000-07C-Plan 113