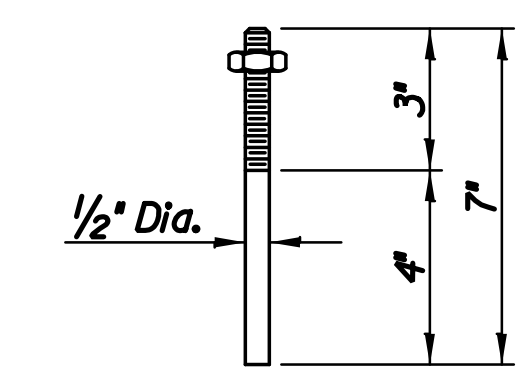
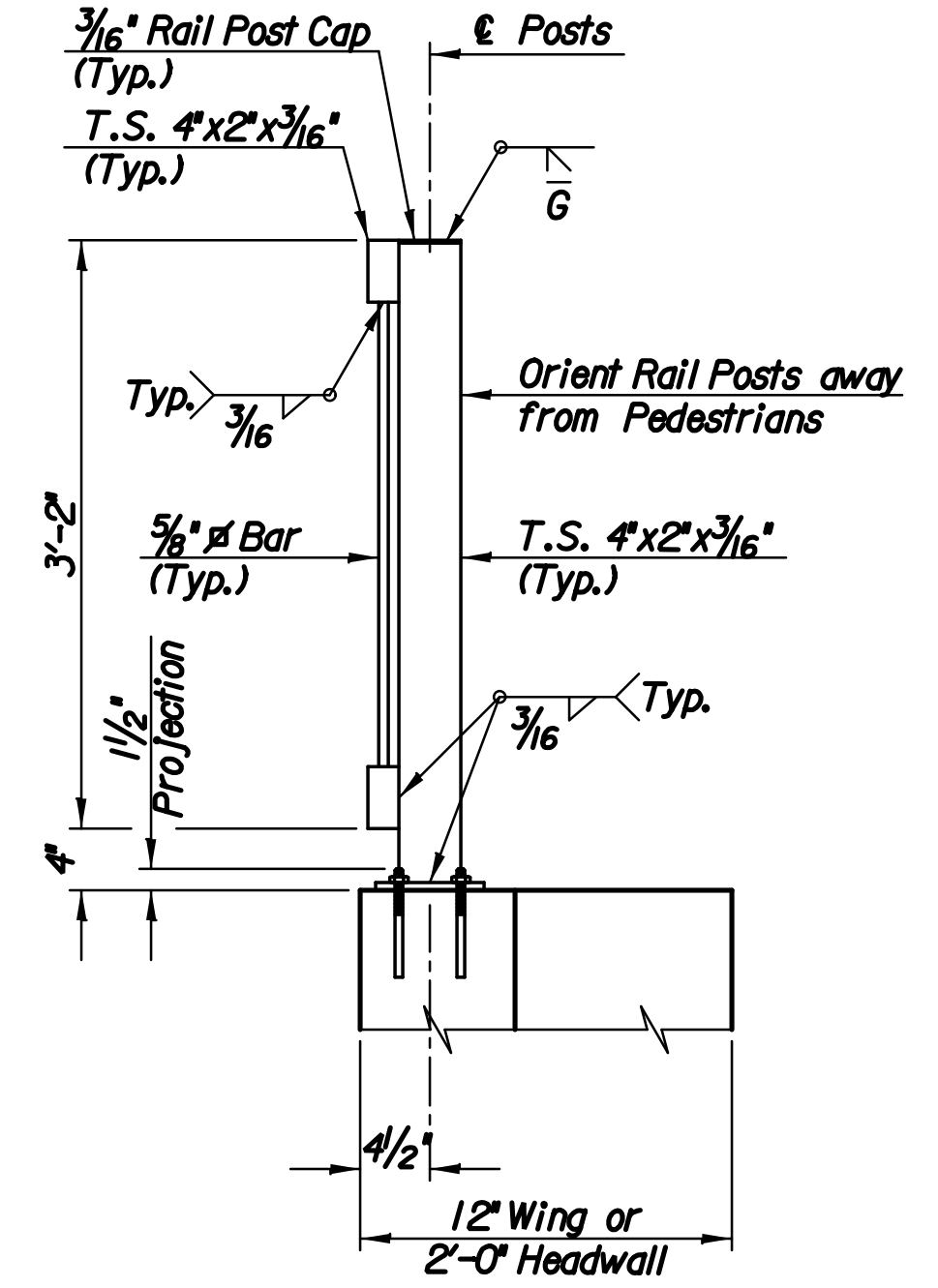
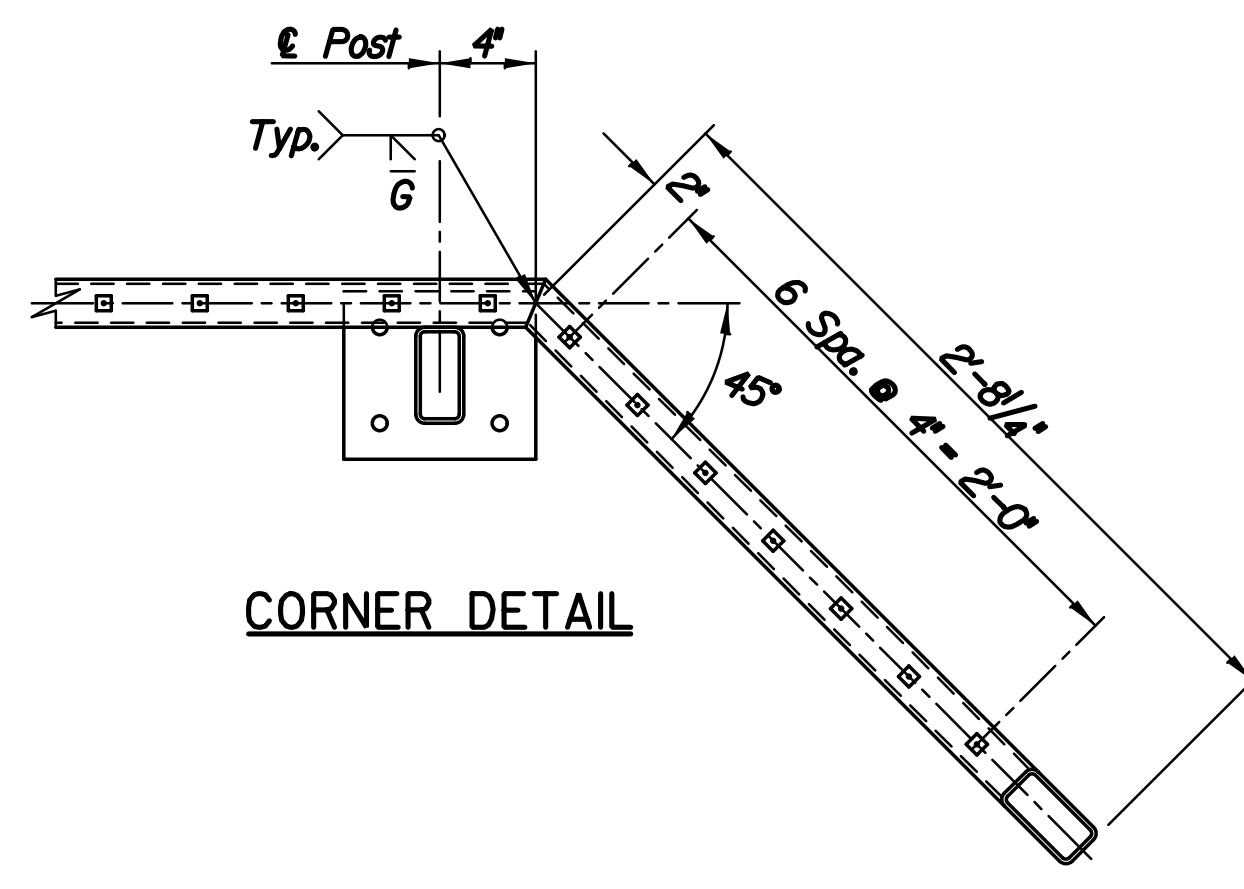
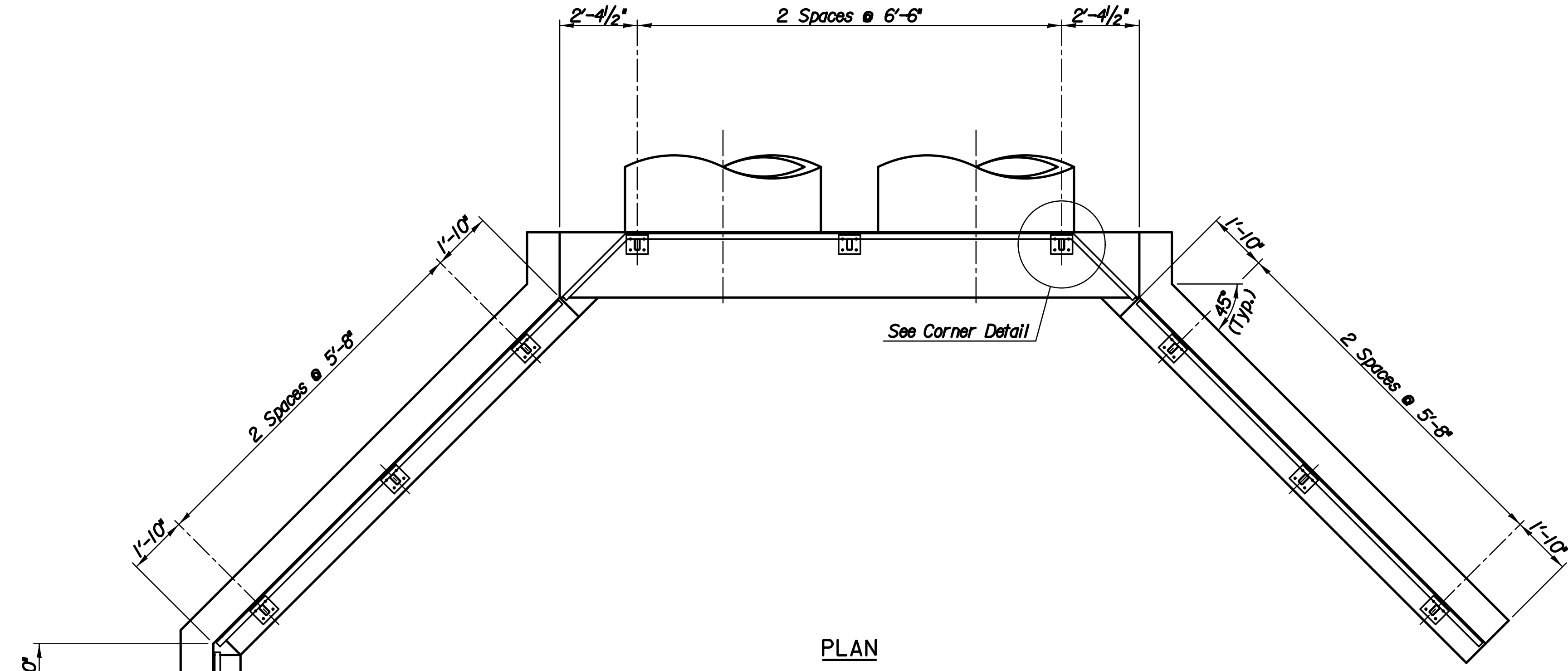
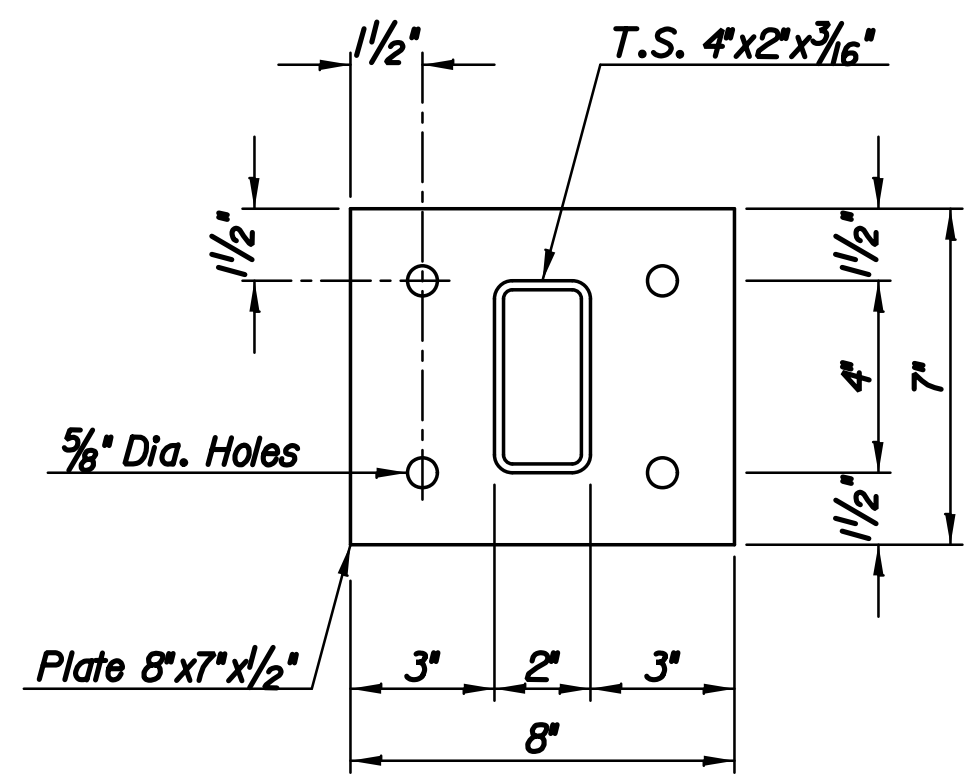
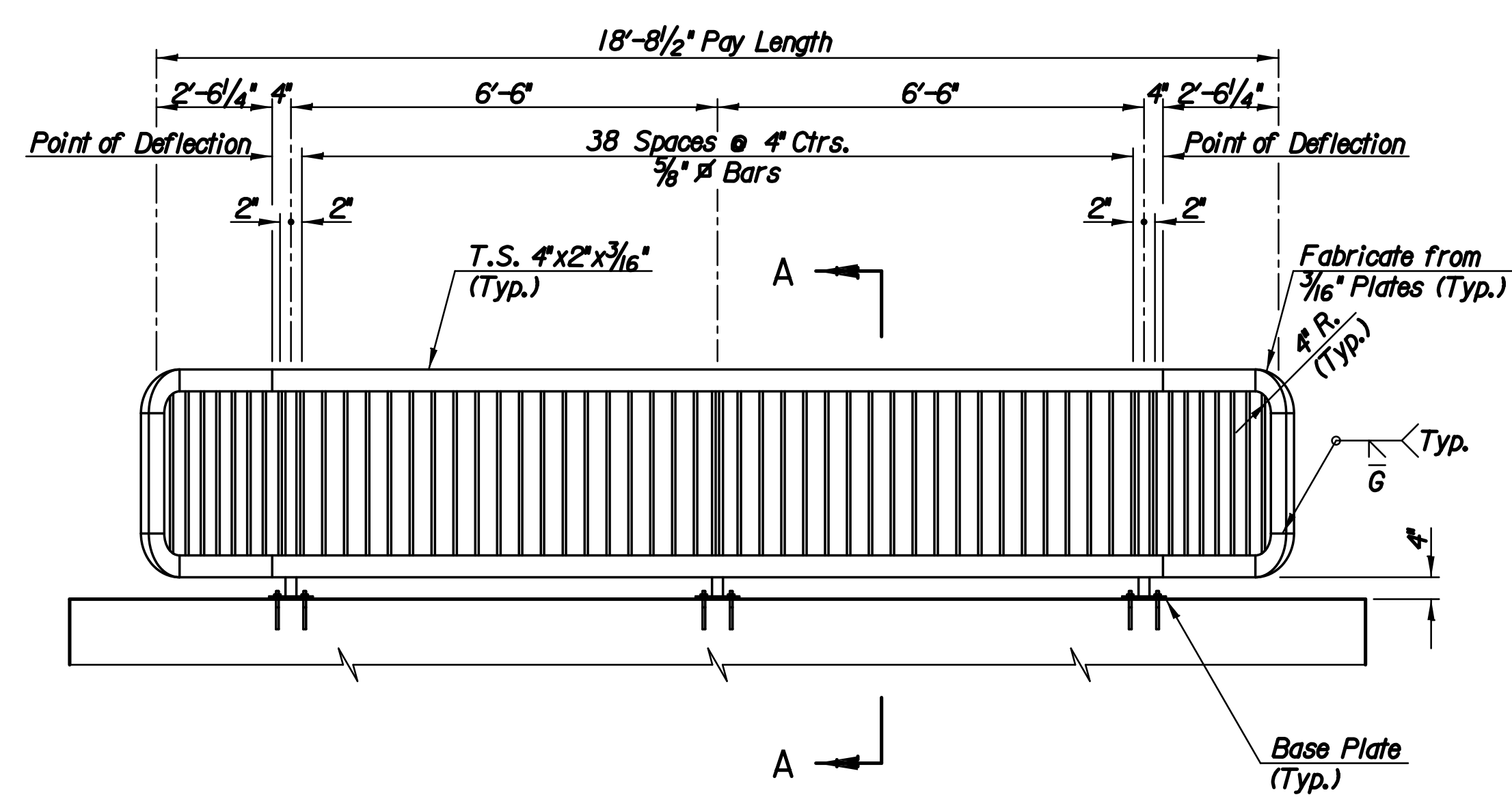
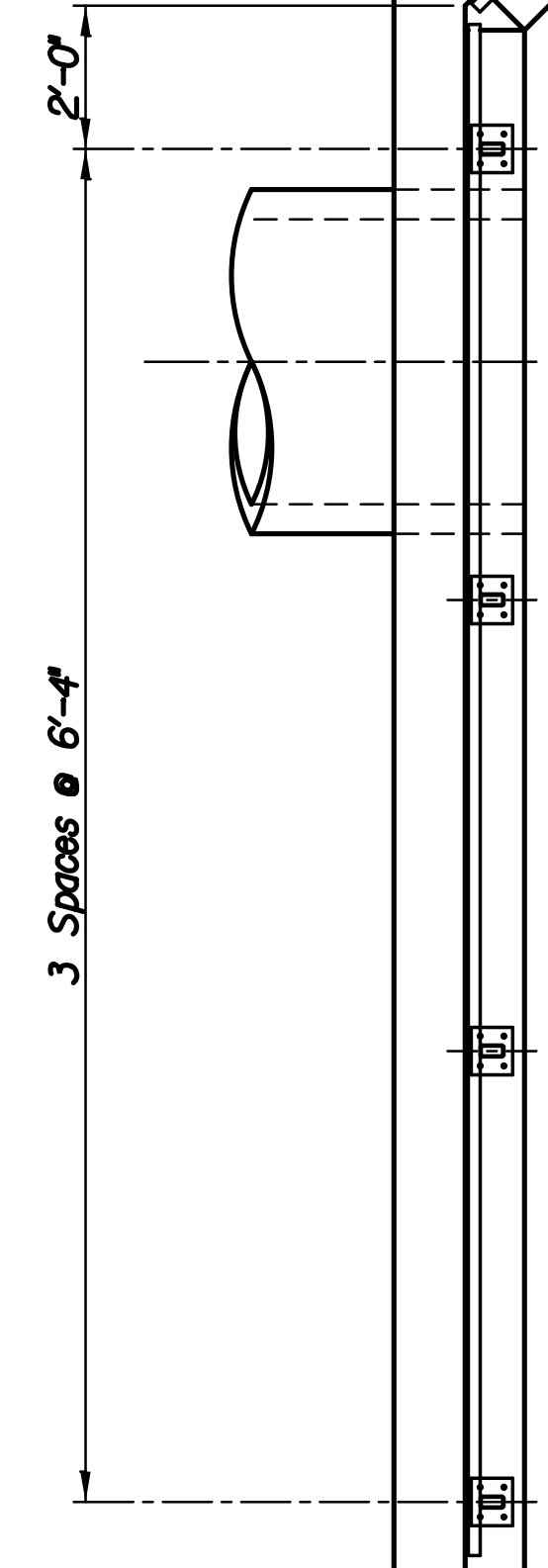


Plotted By : wll 5-13-2017
 Drawing Name : U:\Wichita-Civil\2015\15956\000\Trans\Bridges\Bridg\Proj\sect\Handrail 2-60.dgn



Galvanized (ASTM A153)
 (May substitute expandable anchor bolts when approved by the Engineer)



GENERAL NOTES

The horizontal members of the Rail and Posts shall be hollow structural tubing. All structural steel tubing shall comply to A.S.T.M. designation A36 or A500 Grade B respectively.

Rail shall be fabricated in lengths as shown from joint to joint and joint to end.

Post and Bars shall be set vertical and shimmed if required.

Prior to painting abrasive blast to commercial finish SSPC-SP6 to obtain a surface profile of 1 1/2 Mils. The shop and field coats applied to structural steel shall conform to an inorganic Zinc Primer with water-borne Acrylic finish coat. (The finish coat shall match Carboline #C900, Ebony Black). Provide a color sample to the Engineer with shop drawing submittal.

Material and construction shall conform to the structural welding code A.W.S. D1.1-01.

Shop details must be submitted and approved by the Engineer.

All work associated with furnishing and installing Handrail shall be paid for as "Handrail (Steel), Pedestrian (3'-6") (Sta. 102+26)".

SUMMARY OF QUANTITIES

Item	Quantity	Unit
Handrail (Steel), Pedestrian (3'-6") (Sta. 102+26)	69.9	L.F.

No.	Revision	By	Date
TYLER ROAD BETWEEN MAPLE AND CENTRAL PAVING AND INCIDENTAL IMPROVEMENTS PEDESTRIAN HANDRAIL FOR CONCRETE HEADWALL 1 of 2 GARY JANZEN, P.E. - CITY ENGINEER CITY OF WICHITA PROJECT NO. 472-85282			
PROFESSIONAL ENGINEERING CONSULTANTS, P.A. 303 SOUTH TOPEKA WICHITA, KS 67202 316-262-2691 www.pec1.com			
Designed by	M.S.N.	Job No.	31-15956-000
Drawn by	W.L.L.	Date	JULY 2017
			Sh. 36 of 96