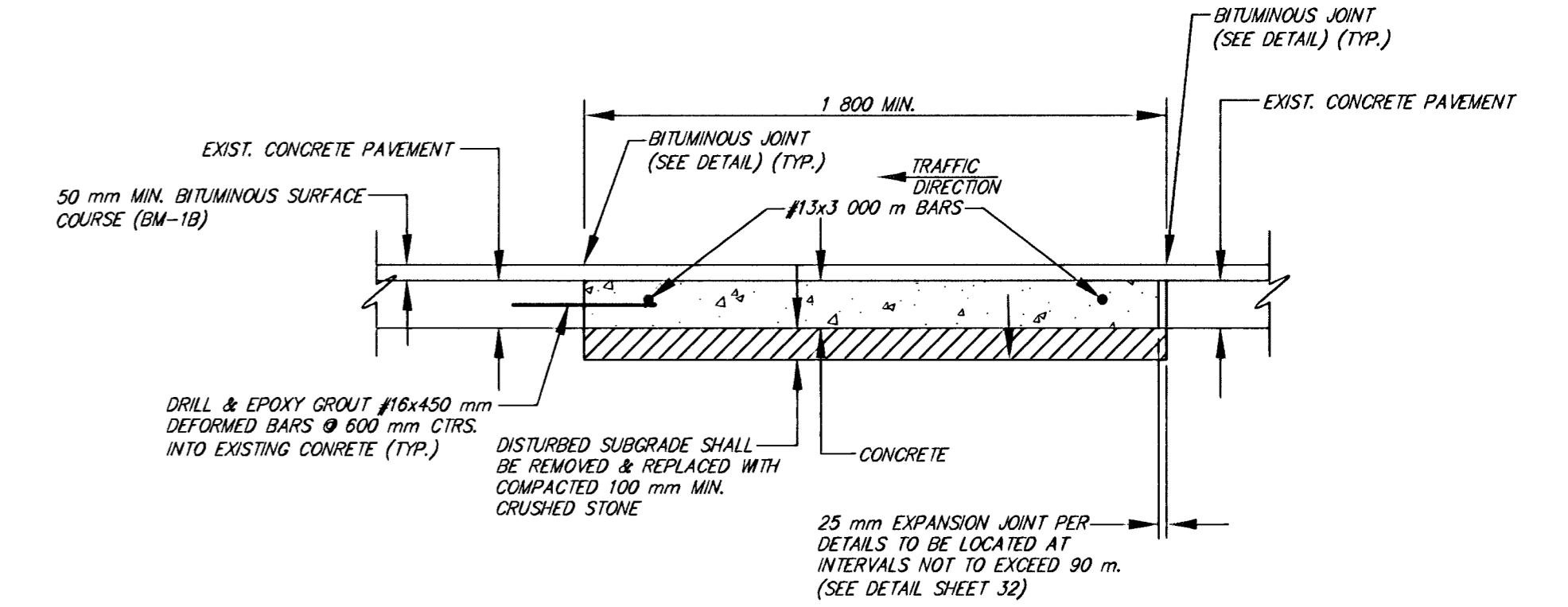
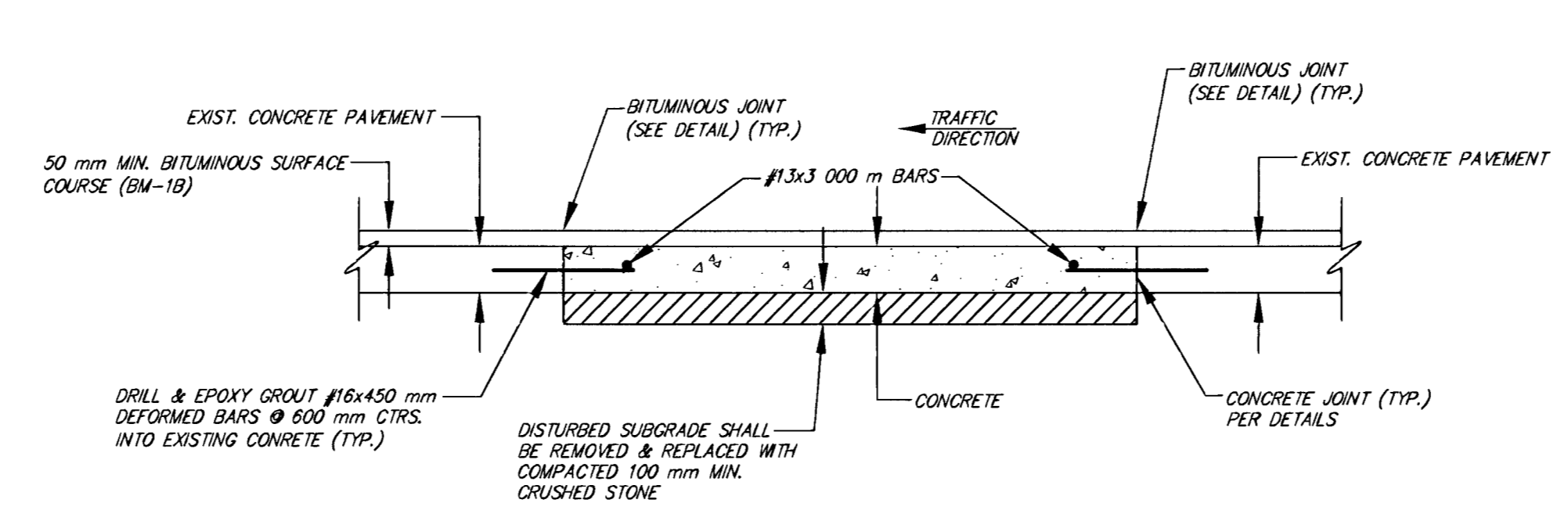
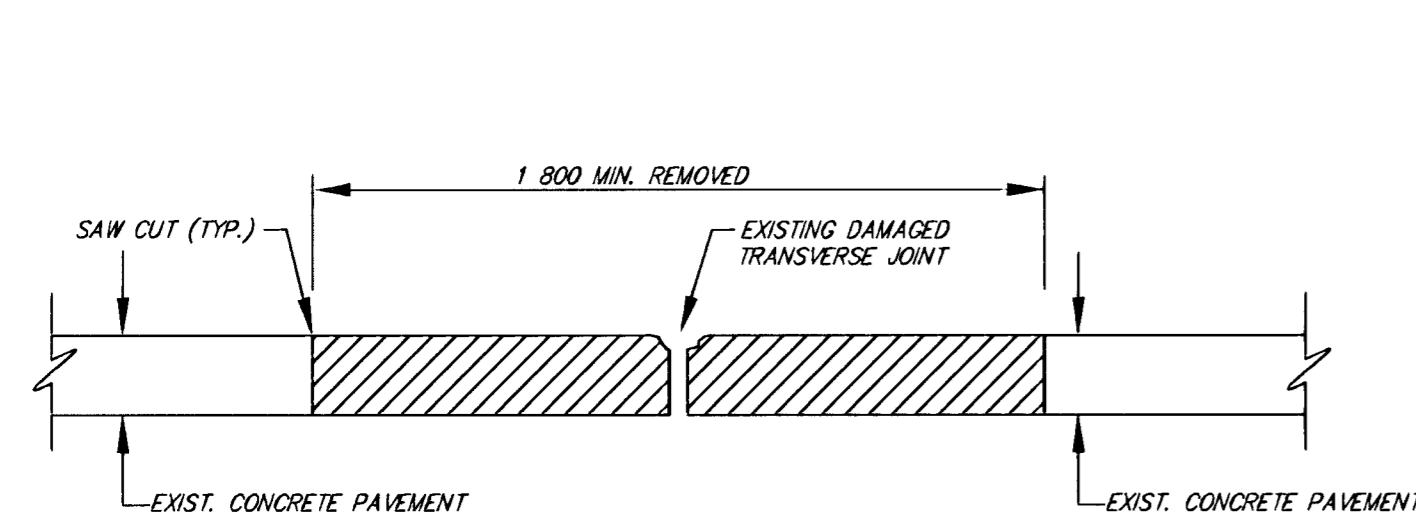
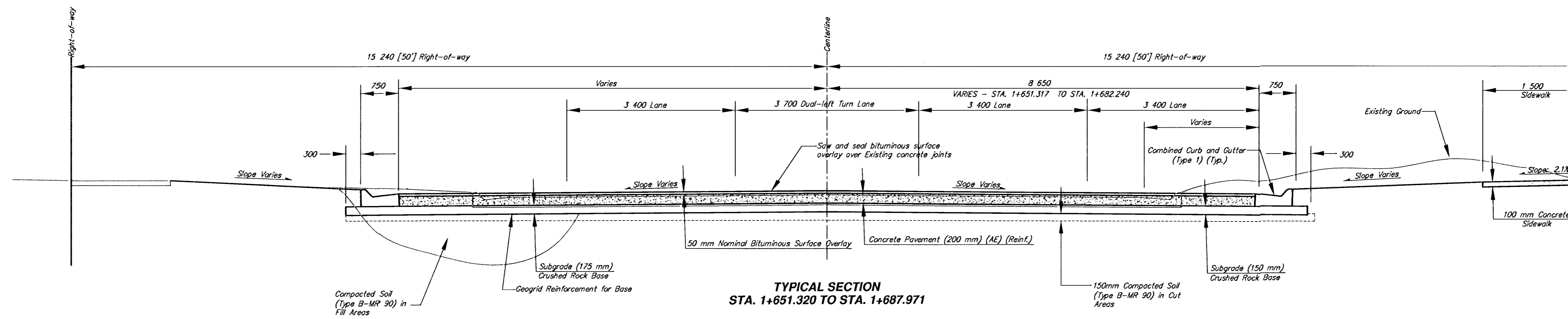
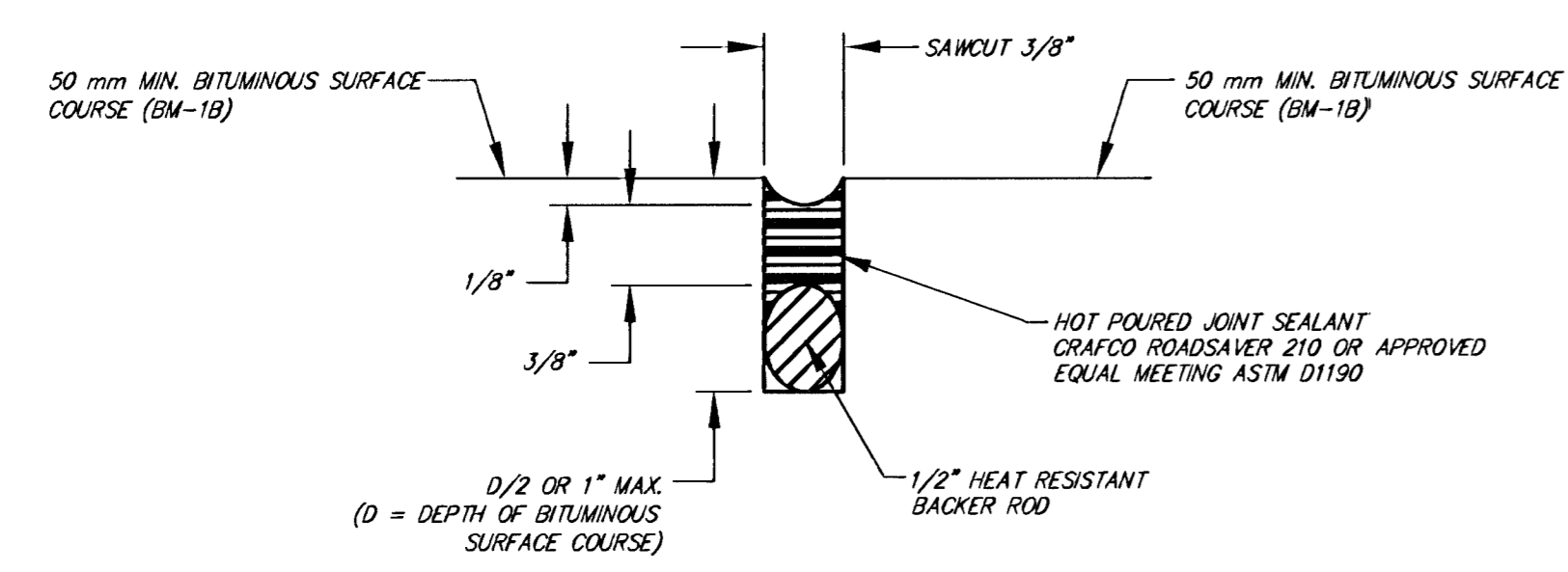


FHWA REGION NO.	STATE	PROJECT NUMBER	FISCAL YEAR	SHEET NUMBER	TOTAL SHEETS
7	KANSAS	87N-0191-01	2002	5	92

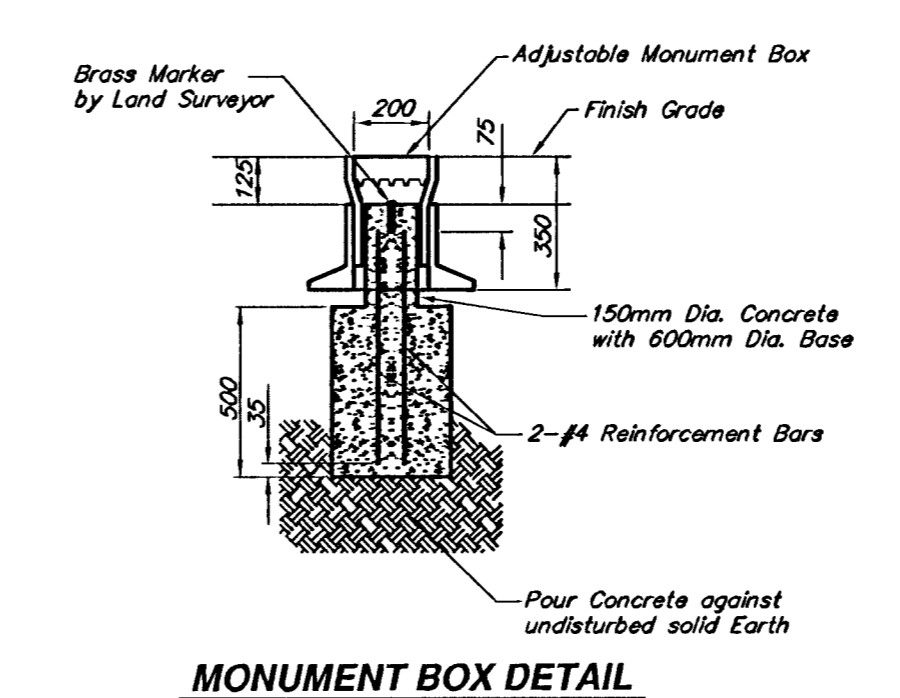
DATE	BY	REFERENCES NOTED	REFERENCES CHECKED



**JOINT REPAIR DETAILS**  
PAVEMENT REPAIR BID ITEM INCLUDES ALL MATERIAL IN THE JOINT REPAIR DETAIL.



**BITUMINOUS JOINT DETAIL**



**MONUMENT BOX DETAIL**

**HARRY STREET IMPROVEMENTS-OLIVER TO WOODLAWN  
TYPICAL SECTIONS  
WICHITA, KANSAS**

	<b>Ruggles &amp; Bohm, P.A.</b> Engineering, Surveying, Land Planning		DESIGN MWS DRAWN TEB REVIEW TEB	SHEET 5 OF 92
	924 North Main Wichita, Kansas 67203 www.rbkansas.com		(316) 264-8008 (316) 264-4621 fax E-mail: info@rbkansas.com	
DRAWING FILE Typical Sections J		PROJECT NUMBER 472-83685		DATE Jan. 30, 2003