

| FHWA REGION NO. | STATE  | PROJECT NUMBER | FISCAL YEAR | SHEET NUMBER | TOTAL SHEETS |
|-----------------|--------|----------------|-------------|--------------|--------------|
| 7               | KANSAS | 87N-0191-01    | 2002        | 6            | 92           |

REPLAT OF RESERVE 'G'  
BUILDER'S FOURTH ADDITION

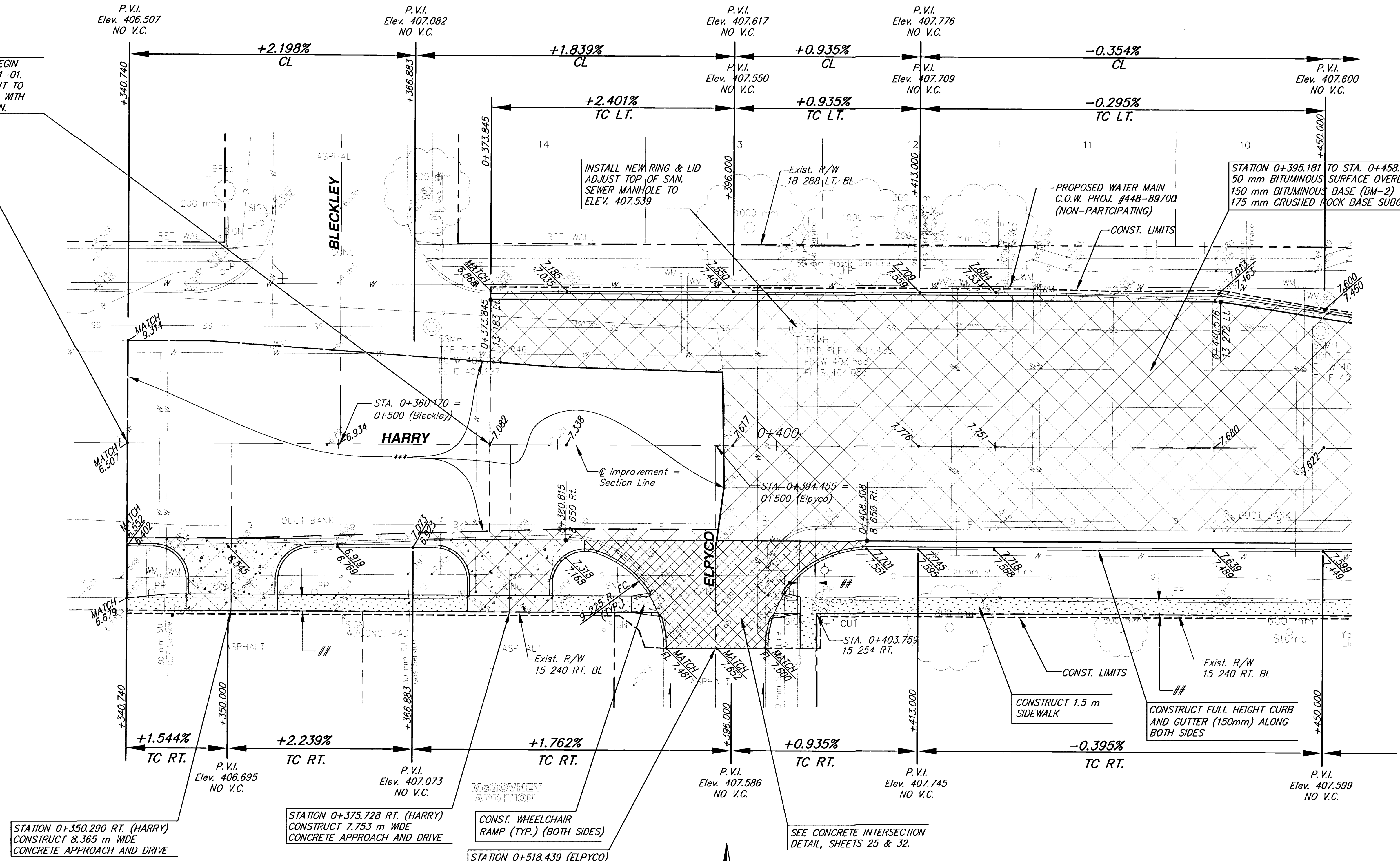
| BY | DATE |
|----|------|
|    |      |
|    |      |
|    |      |
|    |      |

\*\*\* Mill 50 mm and overlay with 50 mm Bituminous Surface.

STATION 0+373.845, BEGIN PROJECT NO. 87N-0191-01. SAW EXISTING PAVEMENT TO NEAT LINE AND MATCH WITH NEW PAVEMENT SECTION.

STATION 0+340.740, BEGIN CONSTRUCTION. SAW EXISTING PAVEMENT TO NEAT LINE AND MATCH WITH NEW PAVEMENT SECTION.

STATION 0+395.181 TO STA. 0+458.206 50 mm BITUMINOUS SURFACE OVERLAY 150 mm BITUMINOUS BASE (BM-2) 175 mm CRUSHED ROCK BASE SUBGRADE



**LEGEND**

- Pavement Removal
- Sidewalk Construction (AE)(100 mm)
- Concrete Pavement (150 mm)(AE)(Plain)
- Concrete Pavement (200 mm)(AE)(Plain)
- Concrete Pavement (200 mm)(AE)(Plain)
- Crushed Stone Subgrade (175 mm) - Geogrid Reinforcement (for base)
- Concrete Pavement (250 mm)(AE)(Plain)
- Crushed Stone Subgrade (150 mm) - Geogrid Reinforcement (for base)
- Paving Brick (69 mm)
- Concrete Base (Unreinf.) (250 mm)
- Reinforced Rock Base (150 mm)
- Concrete Pavement (200 mm)(AE)(Plain)
- W/50 mm Bituminous Surface Overlay
- Crushed Stone Subgrade (175 mm) - Geogrid Reinforcement (for base)

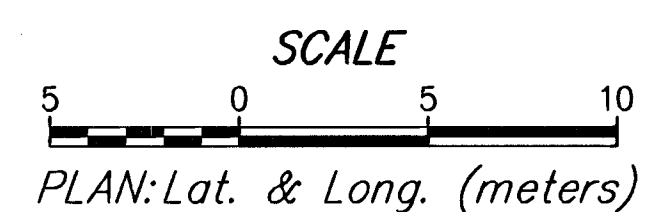
STATION 0+350.290 RT. (HARRY) CONSTRUCT 8.365 m WIDE CONCRETE APPROACH AND DRIVE

STATION 0+375.728 RT. (HARRY) CONSTRUCT 7.753 m WIDE CONCRETE APPROACH AND DRIVE

CONST. WHEELCHAIR RAMP (TYP.) (BOTH SIDES)

STATION 0+518.439 (ELPYCO) SAW EXISTING PAVEMENT TO NEAT LINE AND MATCH.

BM #1 C.O.W. DISK AT SE COR. OLIVER & HARRY 45 720 EAST OF OLIVER ON HARRY NW CORNER OF HUBGUARD OF RCBC. ELEV. 405.323



## REMOVE EXISTING WALK

|  |   |
|--|---|
| <b>HARRY<br/>STATION 0+340.740 TO STATION 0+450<br/>WICHITA, KANSAS</b>  |   |
| <b>Ruggles &amp; Bohm, P.A.</b><br>Engineering, Surveying, Land Planning |   |
| 924 North Main<br>Wichita, Kansas 67203<br>www.rbkansas.com              | (316) 264-8008<br>(316) 264-4621 fax<br>E-mail: info@rbkansas.com |
| DESIGN MWS<br>DRAWN TEB<br>REVIEW<br>UTILITY                             | SHEET 6 OF 92<br>DATE Jan. 30, 2003                               |
| DRAWING FILE P01   | PROJECT NUMBER 472-83685  |