

FHWA REGION NO.	STATE	PROJECT NUMBER	FISCAL YEAR	SHEET NUMBER	TOTAL SHEETS
7	KANSAS	87N-0191-01	2002	7	92

REPLAT OF RESERVE 'C'  
BUILDER'S FOURTH ADDITION

BUILDER'S FOURTH  
ADDITION

SEE CONCRETE INTERSECTION  
DETAIL, SHEETS 25 & 32.

STATION 0+481.536 (PINECREST)  
SAW EXISTING PAVEMENT TO  
NEAT LINE AND MATCH.

INSTALL NEW RING & LID  
ADJUST TOP OF SAN.  
SEWER MANHOLE TO  
ELEV. 407.270

STATION 0+551.676 LT. (HARRY)  
CONSTRUCT 5.230 m WDE  
CONCRETE APPROACH AND DRIVE

P.V.I.  
Elev. 407.301  
NO V.C.

-0.225%  
CL

-0.155%  
TC LT.

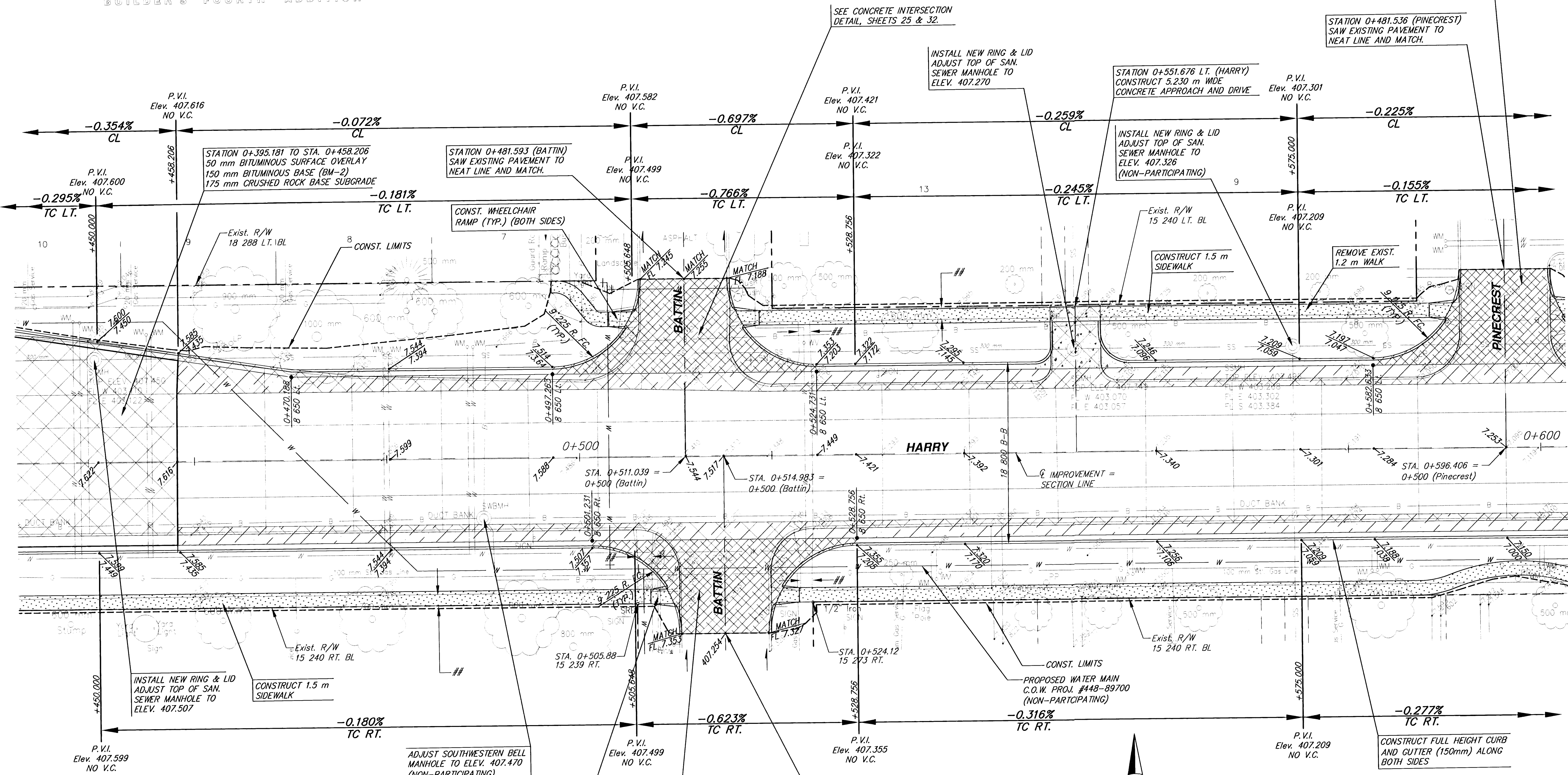
INSTALL NEW RING & LID  
ADJUST TOP OF SAN.  
SEWER MANHOLE TO  
ELEV. 407.326  
(NON-PARTICIPATING)

Exist. R/W  
15 240 LT. BL

CONSTRUCT 1.5 m  
SIDEWALK

REMOVE EXIST.  
1.2 m WALK

PINECREST



DATE	BY

REFERENCES NOTED	REFERENCES CHECKED

## REMOVE EXISTING WALK



SCALE  
5 0 5 10  
PLAN: Lat. & Long. (meters)

HARRY  
STATION 0+450 TO STATION 0+582.633  
WICHITA, KANSAS

**Ruggles & Bohm, P.A.**  
Engineering, Surveying, Land Planning

924 North Main  
Wichita, Kansas 67203  
www.rbkansas.com

(316) 264-8008  
(316) 264-4621 fax  
E-mail: info@rbkansas.com

DESIGN	MWS	7 OF 92	
DRAWN	TEB		
REVIEW			
UTILITY			
DRAWING FILE	P02	DATE	Jan. 30, 2003
PROJECT NUMBER	472-83685		