

@ Tyler Rd. St., Sta. 99+56, 27' Rt.  
 Adjust Existing Water Valve Box (#37106)  
 Existing Top of Box Elev.= 1325.5  
 Proposed Top of Box Elev.= 1325.9  
 Difference = +0.4'

@ Tyler Rd. St., Sta. 99+60, 27' Rt.  
 Adjust Existing Water Valve Box (#10843)  
 Existing Top of Box Elev.= 1325.5  
 Proposed Top of Box Elev.= 1325.9  
 Difference = +0.4'

@ Tyler Rd. St., Sta. 99+64, 29' Rt.  
 Remove Existing Fire Hydrant.  
 Close Existing Valve and Remove Valve Box  
 (Salvage to City of Wichita)  
 Install 1- 6" CI RJ Plug (or MJ Plug with Blocking)  
 This work is shall be included in the bid item "Fire Hydrant Relocation".

@ Tyler Rd. St., Sta. 99+79, 28' Rt.  
 Existing Water Valve Box (#10842)  
 Existing Top of Box Elev.= 1325.8  
 Proposed Top of Box Elev.= 1325.8  
 NO CHANGE

FH RELOCATION NO. 1  
 See sheet no. B9.

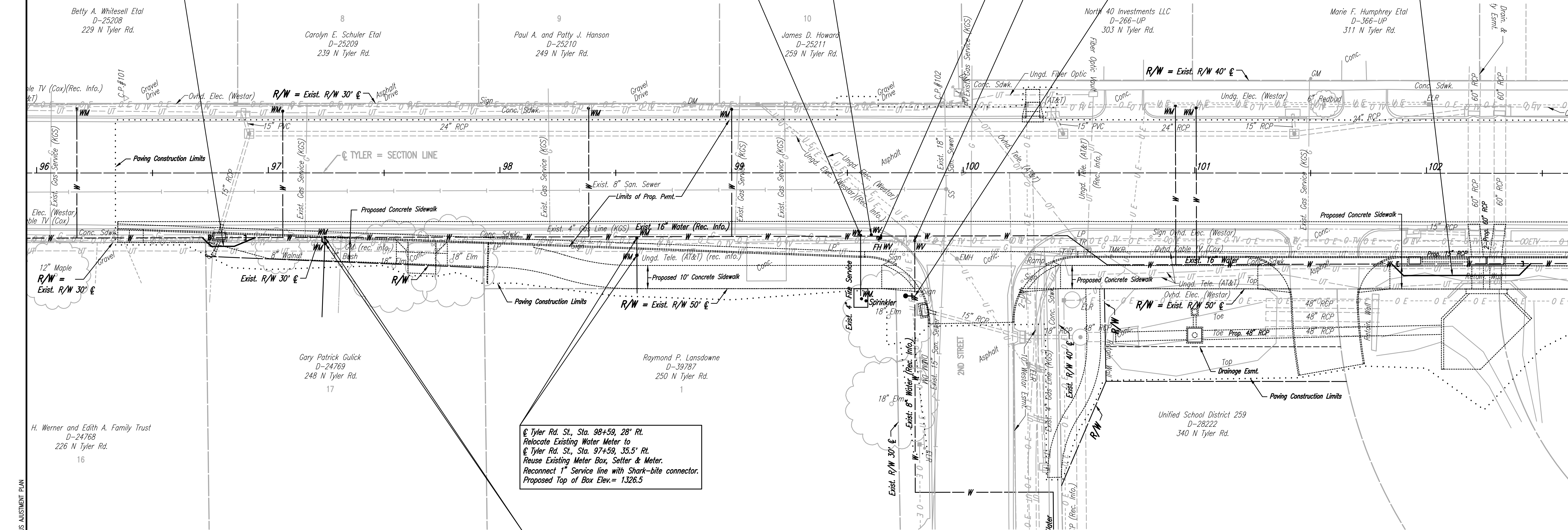
WATERLINE ADJUSTMENT NO. 2  
 See sheet no. B10.

WATERLINE ADJUSTMENT NO. 1  
 See sheet no. B9.

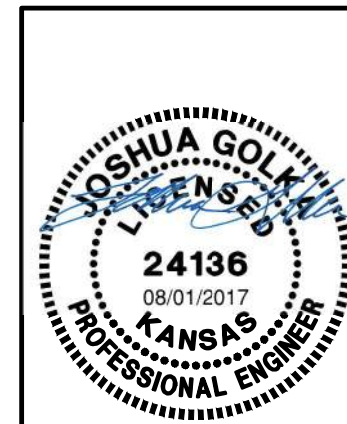
@ Tyler Rd. St., Sta. 98+59, 28' Rt.  
 Relocate Existing Water Meter to  
 @ Tyler Rd. St., Sta. 97+59, 35.5' Rt.  
 Reuse Existing Meter Box, Setter & Meter.  
 Reconnect 1" Service line with Shark-bite connector.  
 Proposed Top of Box Elev.= 1326.5

@ Tyler Rd. St., Sta. 97+24, 28' Rt.  
 Relocate Existing Water Meter to  
 @ Tyler Rd. St., Sta. 97+24, 30.5' Rt.  
 Reuse Existing Meter Box, Setter & Meter.  
 Reconnect 1" Service line with Shark-bite connector.  
 Proposed Top of Box Elev.= 1326.9

X = Denotes Pipe to be abandoned in place.  
 [ ] = Denotes Cap/Plug by the contractor  
 (Includes removal of existing pavement and replacement with temporary pavement.)



Scaled: 08-01-2017 3:08:00 PM by: CSL  
 Plot Scale: 1" = 40'-0" (1:480)  
 U:\Wichita-Civil\2015\15956\001\Drawings\15956-001-B04-MISCELLANEOUS ADJUSTMENT PLAN



No.	Revision	By	Date

**TYLER ROAD BETWEEN MAPLE AND CENTRAL**  
**WATERLINE ADJUSTMENTS**  
**MISCELLANEOUS ADJUSTMENT PLAN**  
**STA. 96+00 TO STA. 101+00**  
 GARY JANZEN, P.E. - CITY ENGINEER  
 CITY OF WICHITA PROJECT NO. 448-90829

**PEC**  
 PROFESSIONAL ENGINEERING CONSULTANTS, P.A.  
 303 SOUTH TOPEKA WICHITA, KS 67202  
 316-262-2691 www.pec1.com

Designed by	JAC, TBK	Job No.	35-15956-001	Sht.	B4 of 20
Drawn by	CSL, GAS	Date	MARCH 2017		