

@ Tyler Rd. St., Sta. 107+63.71, 40.5' Rt.
 Existing 16" Waterline *
 Install 1- 16" Anchored Valve Assembly, Special
 (Butterfly Valve) on Existing 16" Waterline.
 Top Valve Box El.= 1326.9
 This work shall be completed during the Weekend.
 Contractor shall coordinate with the City of Wichita
 and USD 259.

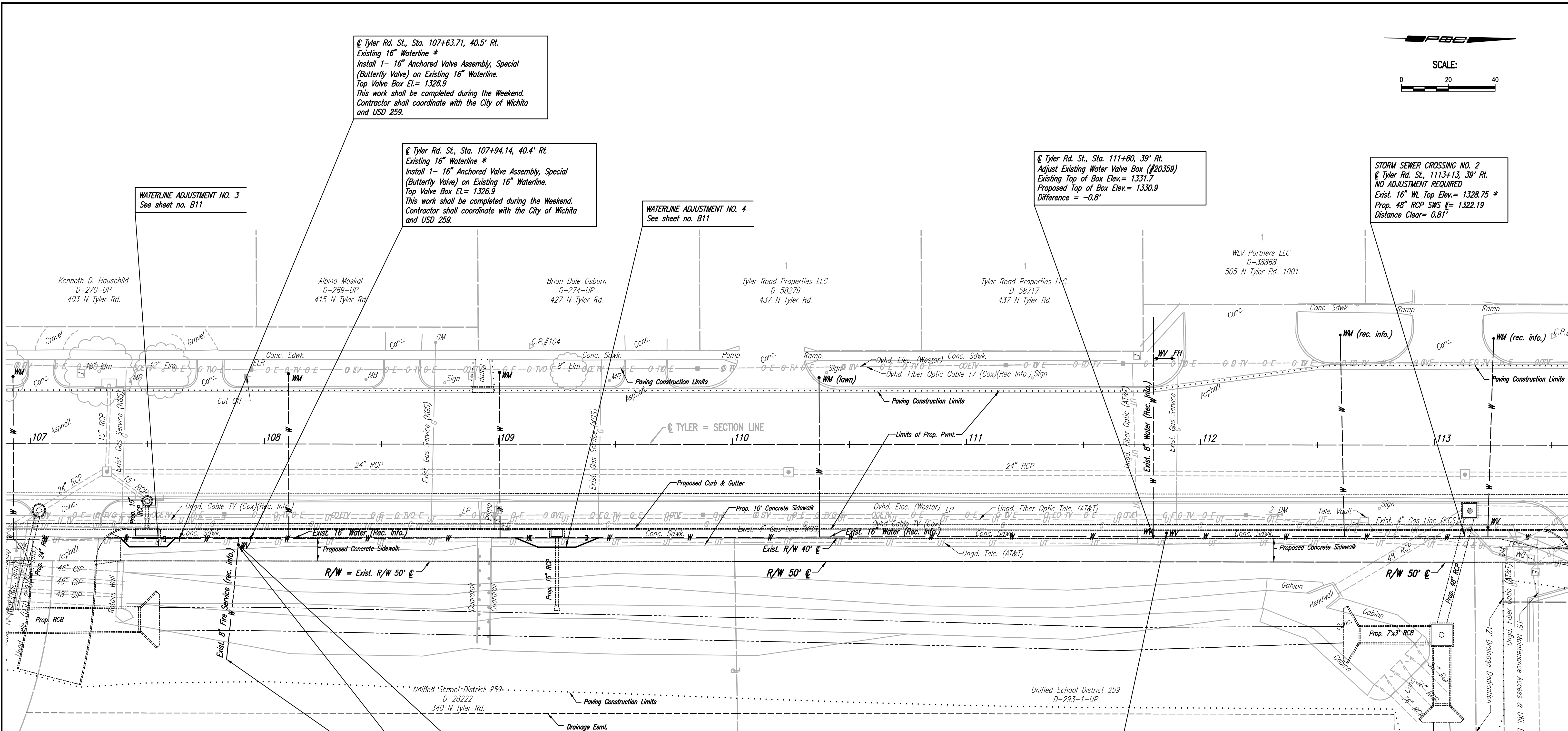
@ Tyler Rd. St., Sta. 107+94.14, 40.4' Rt.
 Existing 16" Waterline *
 Install 1- 16" Anchored Valve Assembly, Special
 (Butterfly Valve) on Existing 16" Waterline.
 Top Valve Box El.= 1326.9
 This work shall be completed during the Weekend.
 Contractor shall coordinate with the City of Wichita
 and USD 259.

WATERLINE ADJUSTMENT NO. 4
 See sheet no. B11

@ Tyler Rd. St., Sta. 111+80, 39' Rt.
 Adjust Existing Water Valve Box (#20359)
 Existing Top of Box Elev.= 1331.7
 Proposed Top of Box Elev.= 1330.9
 Difference = -0.8'

STORM SEWER CROSSING NO. 2
 @ Tyler Rd. St., 1113+13, 39' Rt.
 NO ADJUSTMENT REQUIRED
 Exist. 16" WL Top Elev.= 1328.75 *
 Prop. 48" RCP SWS El.= 1322.19
 Distance Clear= 0.81'

WATERLINE ADJUSTMENT NO. 3
 See sheet no. B11



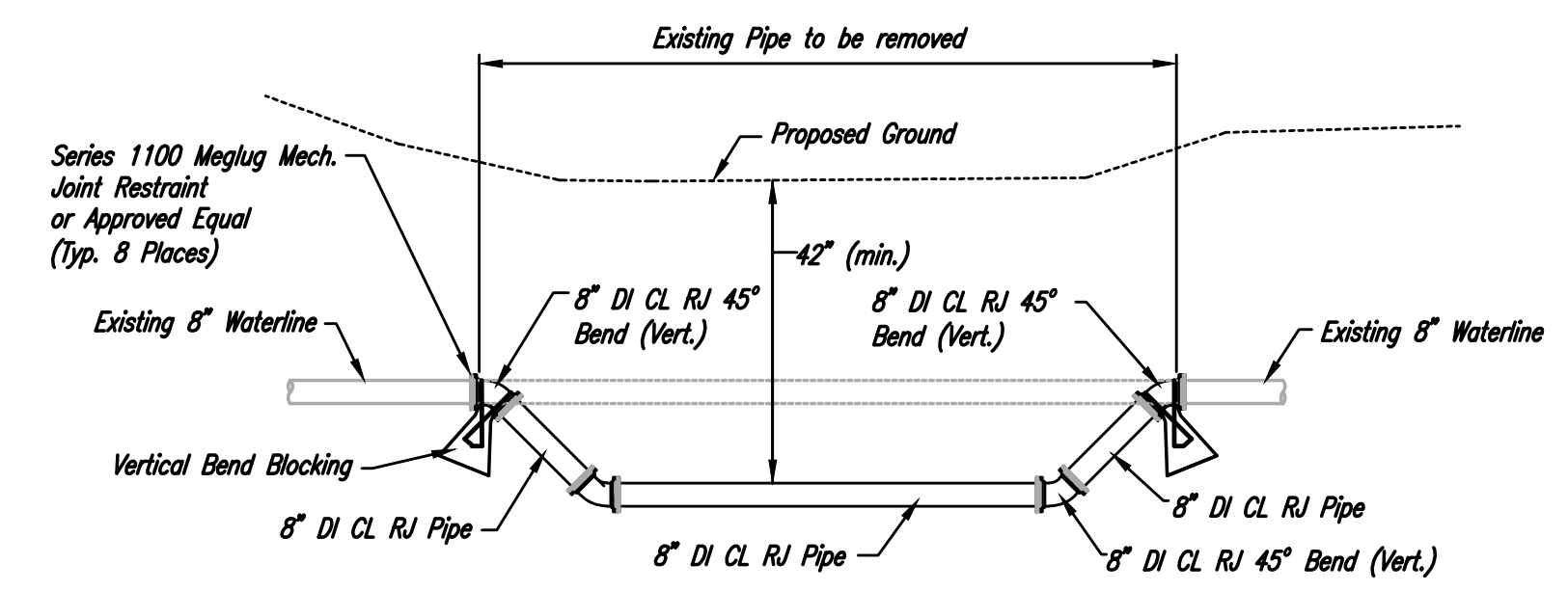
R/W = Exist. R/W 50' @

R/W 50' @

R/W 50' @

@ Tyler Rd. St., Sta. 107+89, 43' Rt.
 Adjust Existing Water Valve Box (#11560)
 Existing Top of Box Elev.= 1326.7
 Proposed Top of Box Elev.= 1326.9
 Difference = +0.2'

@ Tyler Rd. St., Sta. 111+86, 38' Rt.
 Existing 16" x 8" Tee/Outlet *
 Close Existing Valve and Remove Valve Box
 (Salvage to City of Wichita)
 Install 1- 8" CI MJ Plug.

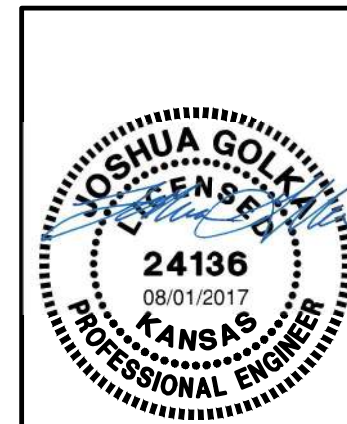


WATERLINE ADJUSTMENT DETAIL
 NOT TO SCALE

Existing 8" Fire Service Line to School.
 Adjustment Waterline from Valve to approximately 60' East of Valve.
 (See detail this sheet.)
 Prior to beginning construction, the Contractor shall excavate the existing 8" waterline to verify pipe size, type, fittings, and horizontal and vertical location. The Contractor shall report his findings to the Engineer so that any necessary plan modifications can be made. This work and any additional Labor or Materials necessary to complete the adjustment shall be included in the bid item "8" Fire Service Line Adjustment".

* PRIOR TO BEGINNING CONSTRUCTION, THE CONTRACTOR SHALL EXCAVATE THE EXISTING 16" WATERLINE TO VERIFY PIPE SIZE, TYPE, FITTINGS, AND HORIZONTAL AND VERTICAL LOCATION. THE CONTRACTOR SHALL REPORT HIS FINDINGS TO THE ENGINEER SO THAT ANY NECESSARY PLAN MODIFICATIONS CAN BE MADE. ANY ADDITIONAL LABOR OR MATERIALS NECESSARY TO COMPLETE THE CONNECTION SHALL BE CONSIDERED SUBSIDIARY TO THE PROJECT.

X = Denotes Pipe to be abandoned in place.
 [] = Denotes Cap/Plug by the contractor
 (Includes removal of existing pavement and replacement with temporary pavement.)



No.	Revision	By	Date
TYLER ROAD BETWEEN MAPLE AND CENTRAL WATERLINE ADJUSTMENTS MISCELLANEOUS ADJUSTMENT PLAN STA. 107+00 TO STA. 113+00 GARY JANZEN, P.E. - CITY ENGINEER CITY OF WICHITA PROJECT NO. 448-90829			
		PROFESSIONAL ENGINEERING CONSULTANTS, P.A. 303 SOUTH TOPEKA WICHITA, KS 67202 316-262-2691 www.pec1.com	
Designed by	JAG, TBK	Job No.	35-15956-001
Drawn by	CSL, GAS	Date	MARCH 2017
			Sht. B6 of 20

Scaled: 08-01-2017 3:11:52 PM by: CSL
 Plot Scale: 1" = 40'-0" (2017) 3:52:27 PM by: CSL
 U:\Wichita-Civil\2015\15956\001\Drawings\15956-001-MISCELLANEOUS ADJUSTMENT PLAN