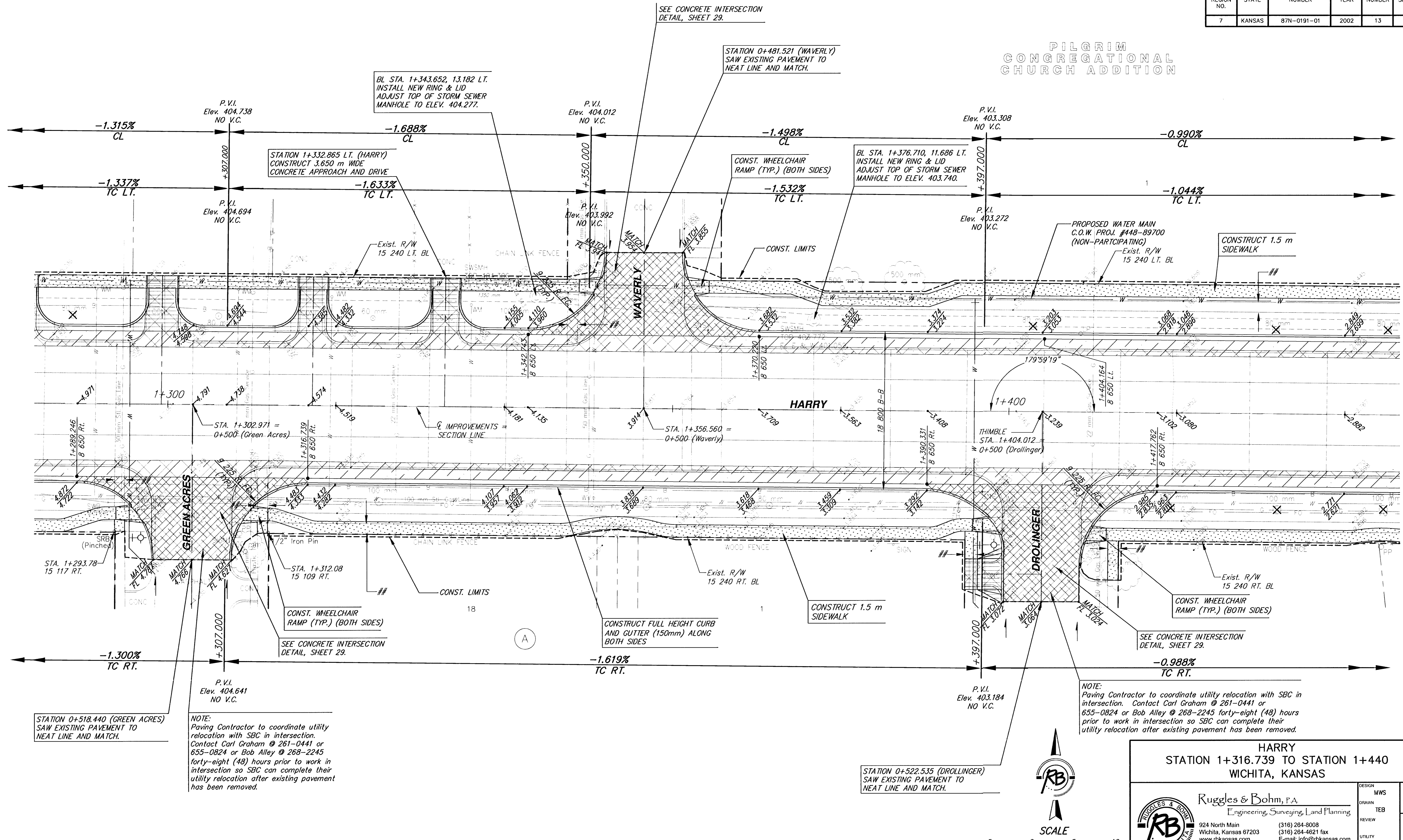


FHWA REGION NO.	STATE	PROJECT NUMBER	FISCAL YEAR	SHEET NUMBER	TOTAL SHEETS
7	KANSAS	87N-0191-01	2002	13	92

**PILGRIM  
CONGREGATIONAL  
CHURCH ADDITION**

DATE	BY	REFERENCES NOTED	REFERENCES CHECKED

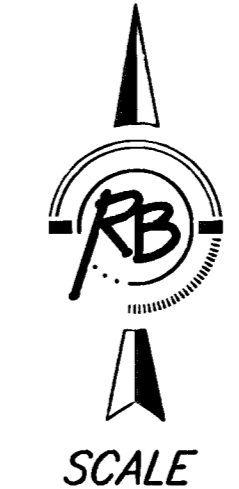


STATION 0+518.440 (GREEN ACRES) SAW EXISTING PAVEMENT TO NEAT LINE AND MATCH.

NOTE:  
Paving Contractor to coordinate utility relocation with SBC in intersection. Contact Carl Graham @ 261-0441 or 655-0824 or Bob Alley @ 268-2245 forty-eight (48) hours prior to work in intersection so SBC can complete their utility relocation after existing pavement has been removed.

STATION 0+522.535 (DROLLINGER) SAW EXISTING PAVEMENT TO NEAT LINE AND MATCH.

NOTE:  
Paving Contractor to coordinate utility relocation with SBC in intersection. Contact Carl Graham @ 261-0441 or 655-0824 or Bob Alley @ 268-2245 forty-eight (48) hours prior to work in intersection so SBC can complete their utility relocation after existing pavement has been removed.



## REMOVE EXISTING WALK

**HARRY  
STATION 1+316.739 TO STATION 1+440  
WICHITA, KANSAS**

<p><b>Ruggles &amp; Bohm, P.A.</b> Engineering, Surveying, Land Planning</p> <p>924 North Main Wichita, Kansas 67203 www.rbkansas.com</p>	<p>DESIGN MWS DRAWN TEB REVIEW</p>	<p>SHEET <b>13</b> OF <b>92</b></p>
	<p>PROJECT NUMBER 472-83685</p>	
	<p>DATE Jan. 30, 2003</p>	