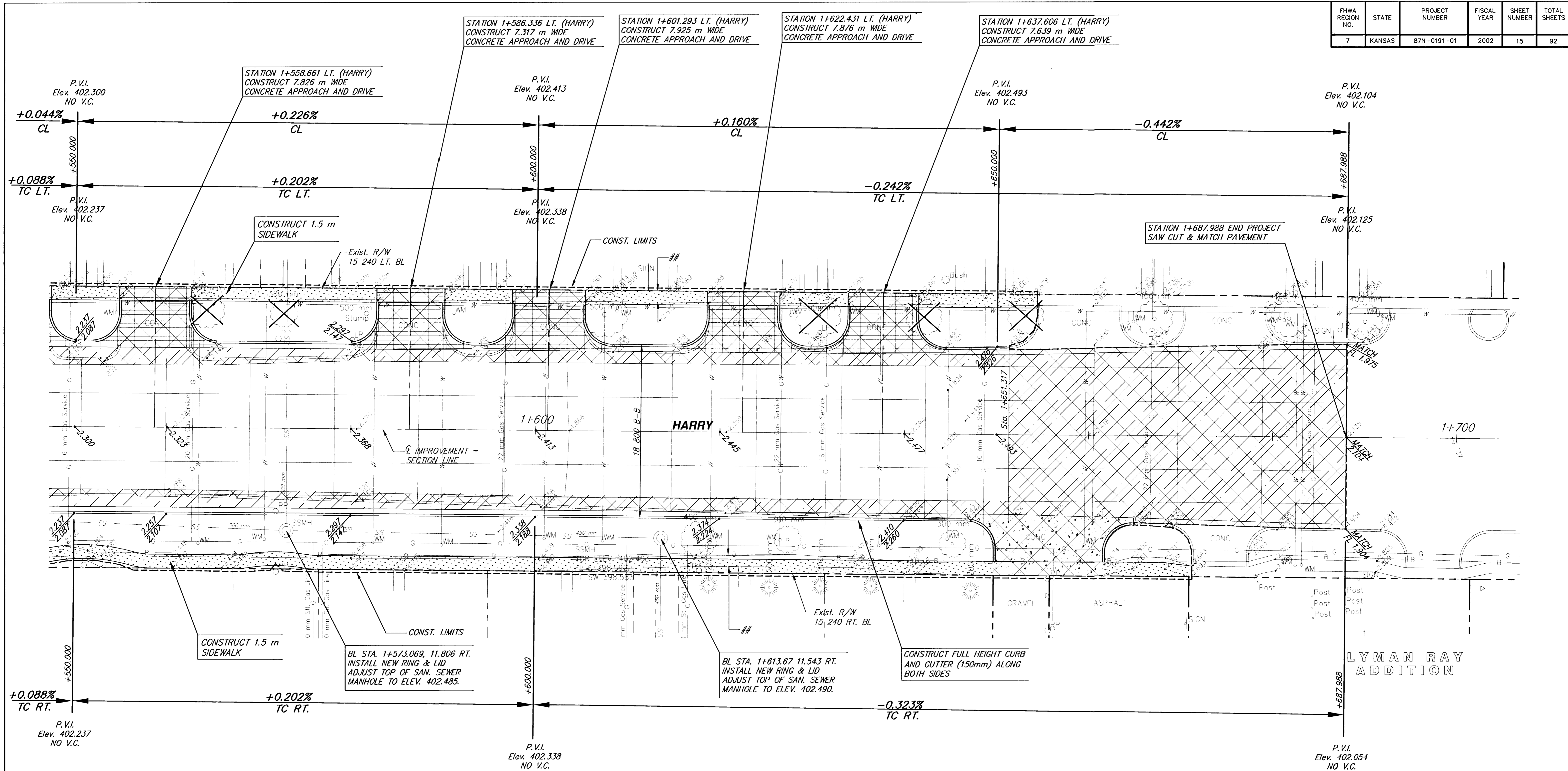


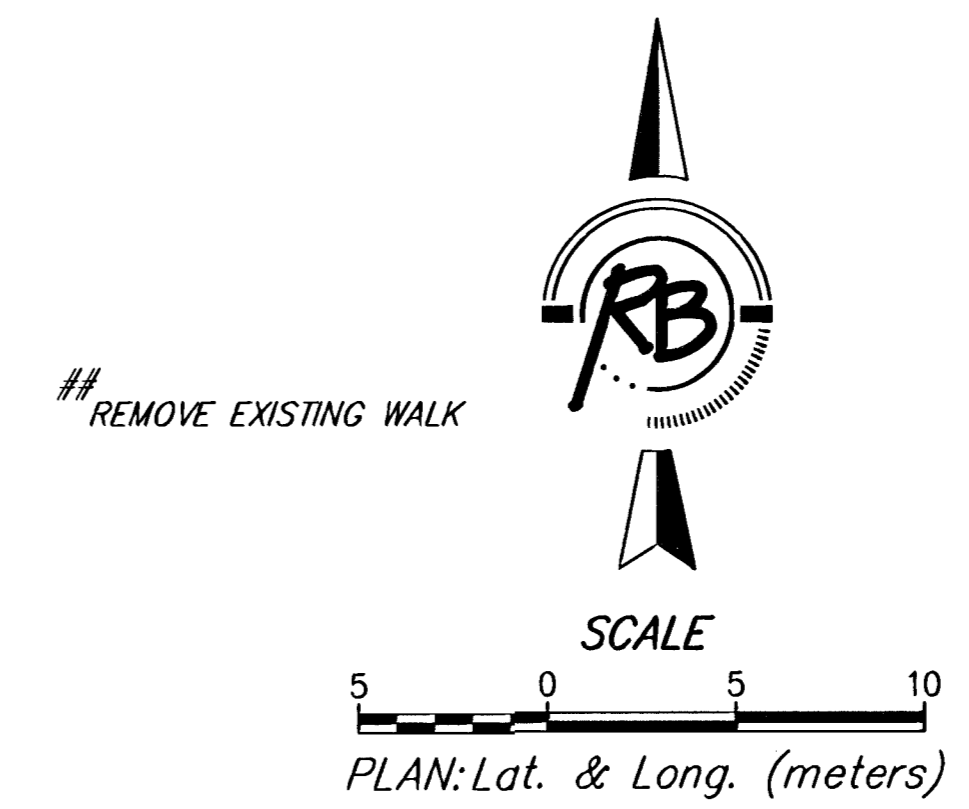
FHWA REGION NO.	STATE	PROJECT NUMBER	FISCAL YEAR	SHEET NUMBER	TOTAL SHEETS
7	KANSAS	87N-0191-01	2002	15	92

DATE	BY	REFERENCES NOTED	REFERENCES CHECKED



LYMAN RAY ADDITION

BM #3
 C.O.W. DISK AT SE COR. WOODLAWN & HARRY
 10 668 S CENTERLINE
 21 031 E CENTERLINE
 2 286 SW TRAFFIC SIGNAL POLE
 23 592 NW SECTION CORNER
 ELEV. 404.652



HARRY
 STATION 1+550 TO STATION 1+687.988
 WICHITA, KANSAS

Ruggles & Bohm, P.A.
 Engineering, Surveying, Land Planning
 924 North Main (316) 264-8008
 Wichita, Kansas 67203 (316) 264-4621 fax
 www.rbkansas.com E-mail: info@rbkansas.com

DESIGN: MWS
 DRAWN: TEB
 REVIEW: [blank]
 UTILITY: [blank]
 DATE: Jan. 30, 2003

PROJECT NUMBER: 472-83685
 SHEET: 15 OF 92