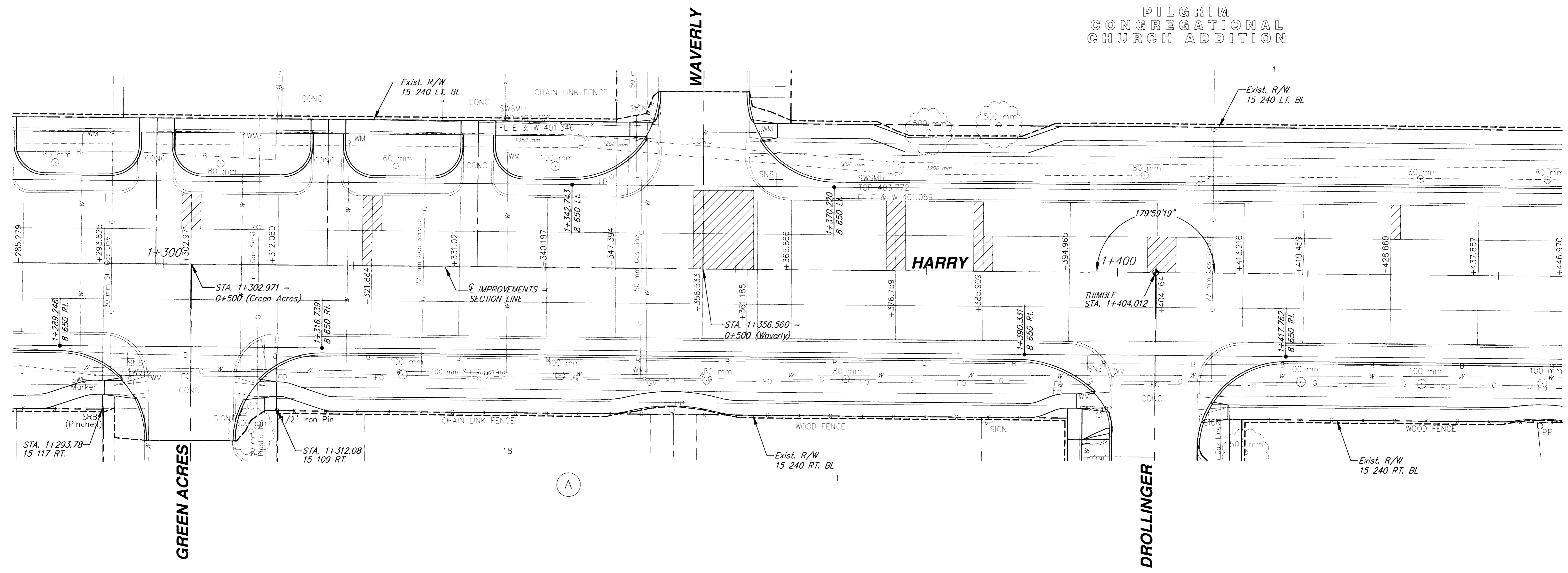


FHWA REGION NO.	STATE	PROJECT NUMBER	FISCAL YEAR	SHEET NUMBER	TOTAL SHEETS
7	KANSAS	87N-0191-01	2002	22	92

BY	DATE
REFERENCES NOTED	
REFERENCES CHECKED	

SEE SHEET 5 FOR
JOINT REPAIR DETAILS.

PILGRIM
CONGREGATIONAL
CHURCH ADDITION



HARRY PAVEMENT REPAIR
STATION 1+316.739 TO STATION 1+440
WICHITA, KANSAS

Ruggles & Bohm, P.A.
Engineering, Surveying, Land Planning
924 North Main (316) 264-9008
Wichita, Kansas 67203 (316) 264-4621 fax
www.rbkansas.com E-mail: info@rbkansas.com

DESIGN	MWS	SHEET	22
DRAWN	TEB		
REVIEW		OF	92
UTILITY			
DRAWING FILE	PATCH08	PROJECT NUMBER	472-83685
DATE	Feb. 3, 2003		

