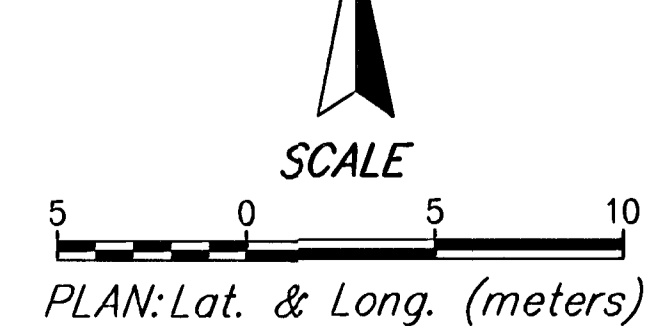
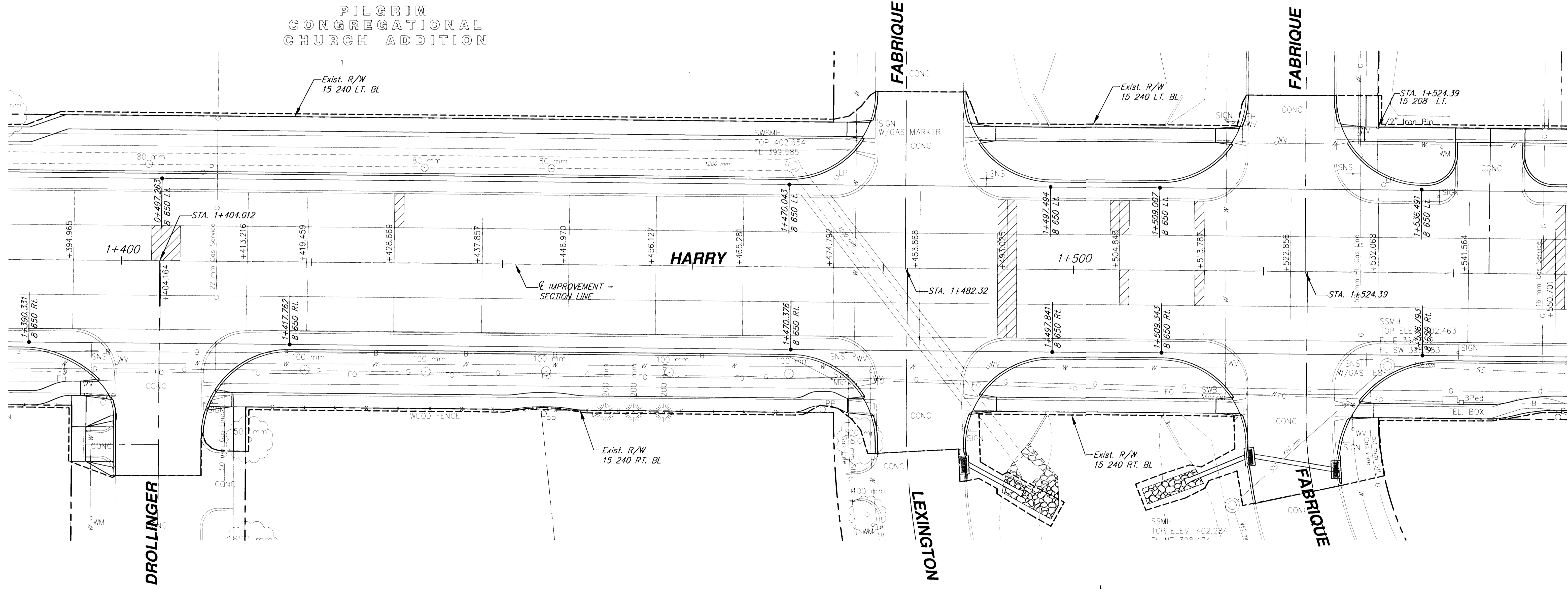


FHWA REGION NO.	STATE	PROJECT NUMBER	FISCAL YEAR	SHEET NUMBER	TOTAL SHEETS
7	KANSAS	87N-0191-01	2002	23	92

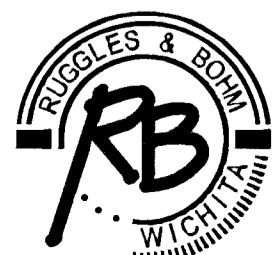
BY	DATE

SEE SHEET 5 FOR
JOINT REPAIR DETAILS.

PILGRIM
CONGREGATIONAL
CHURCH ADDITION



**HARRY PAVEMENT REPAIR
STATION 1+440 TO STATION 1+550
WICHITA, KANSAS**



Ruggles & Bohm, P.A.
Engineering, Surveying, Land Planning
924 North Main
Wichita, Kansas 67203
www.rbkansas.com

(316) 284-8008
(316) 284-4621 fax
E-mail: info@rbkansas.com

DESIGN	MWS	REP. JOB	ISSAT
DRAWN	TEB		
REVIEW			
UTILITY			
DATE			
23	OF		
			92

DRAWING FILE PATCH09	PROJECT NUMBER 472-83685
-------------------------	-----------------------------