

GENERAL NOTES

- THE CONTRACTOR SHALL COMPLY WITH ALL APPLICABLE SAFETY REGULATIONS. ALL CONSTRUCTION SHALL BE COMPLETED FOLLOWING CURRENT CITY STANDARD SPECIFICATIONS AND SPECIAL PROVISIONS.
- THE CONTRACTOR WILL BE REQUIRED TO PROVIDE NOTICE TO UTILITY COMPANIES A MINIMUM OF SEVENTY-TWO (72) HOURS PRIOR TO ANY EXCAVATION, AS FOLLOWS:
 KANSAS ONE-CALL 687-2470
 THE CONTRACTOR MUST NOTIFY THE FOLLOWING IN CASE OF AN EMERGENCY:
 AT&T 1-800-246-8464
 BLACK HILLS ENERGY (GAS) 1-800-694-8989
 CITY OF WICHITA WATER & SEWER 1-316-219-8921
 CITY OF WICHITA STORMWATER 1-316-268-4090
 CITY OF WICHITA TRAFFIC 1-316-268-4034
 COX COMMUNICATIONS 1-888-249-3530
 KANSAS GAS SERVICE 1-888-482-4950
 WESTAR ENERGY 1-800-544-4857
- UTILITY SERVICE LINES, POLES, ETC. ARE TO BE ADJUSTED AS NECESSARY BY OTHERS PRIOR TO CONSTRUCTION UNLESS THE PLANS SPECIFICALLY CALL FOR THEIR ADJUSTMENT BY THE CONTRACTOR OR UNLESS THE PLANS SPECIFICALLY IDENTIFY A UTILITY TO BE ADJUSTED BY ITS OWNER DURING CONSTRUCTION. EXISTING UTILITIES AND THEIR LOCATION, AS SHOWN ON THE PLANS, REPRESENT THE BEST INFORMATION OBTAINABLE FOR DESIGN. THE CONTRACTOR WILL BE REQUIRED TO WORK AROUND EXISTING UTILITIES WITHIN THE RIGHT-OF-WAY WHICH DO NOT CONFLICT WITH PROPOSED CONSTRUCTION.
- RUBBLE FROM THE REMOVAL OF MISCELLANEOUS STRUCTURES AND EXCESS EXCAVATION WHICH IS TO BE WASTED SHALL BE DISPOSED OF ON SITES TO BE PROVIDED BY THE CONTRACTOR. THESE SITES SHALL BE APPROVED BY THE ENGINEER AS TO SUITABILITY, APPEARANCE AND SITE LOCATION. LOCATIONS, IN THE OPINION OF THE ENGINEER, THAT WILL LEAVE AN UNSIGHTLY APPEARANCE WILL NOT BE APPROVED. ALL DISPOSAL SITES MUST BE APPROVED BY THE KANSAS DEPARTMENT OF HEALTH AND ENVIRONMENT. MATERIAL EITHER STOCKPILED OR DISPOSED OF IN A FLOOD PLAIN WOULD REQUIRE A KANSAS STATE BOARD OF AGRICULTURE PERMIT. ANY MATERIAL DUMPED IN WATERS OF THE UNITED STATES IS SUBJECT TO U.S. CORPS OF ENGINEERS PERMITTING REGULATIONS. ANY MATERIAL BURIED OR STOCKPILED BEYOND APPROVED CONSTRUCTION LIMITS WILL REQUIRE ADDITIONAL ARCHAEOLOGICAL INVESTIGATIONS UNLESS BURIED IN A PREVIOUSLY APPROVED BORROW LOCATION.
- TREES AND SHRUBS IN PUBLIC RIGHT-OF-WAY WHICH ARE IN DIRECT CONFLICT WITH PROPOSED NEW CONSTRUCTION SHALL BE REMOVED BY THE CONTRACTOR WITH THE CITY ENGINEER'S APPROVAL. TREES AND SHRUBS WHICH ARE NOT IN DIRECT CONFLICT WITH PROPOSED NEW CONSTRUCTION SHALL BE SAVED AND PROTECTED FROM DAMAGE.
- THE CONTRACTOR SHALL GIVE ALL PROPERTY OWNERS AND/OR TENANTS OF DEVELOPED PROPERTY ABUTTING THE CONSTRUCTION OF THIS PROJECT A MINIMUM OF TEN (10) DAYS NOTICE PRIOR TO START OF CONSTRUCTION.
- THE CONTRACTOR SHALL BE RESPONSIBLE FOR PRESERVING PROPERTY IRONS. THE CONTRACTOR WILL BE REQUIRED TO RE-ESTABLISH ANY PROPERTY IRONS WHICH ARE DAMAGED OR DESTROYED BY HIS CONSTRUCTION OPERATIONS. SUCH IRONS SHALL BE RE-ESTABLISHED BY A LICENSED LAND SURVEYOR IN ACCORDANCE WITH STATE LAWS.
- THE ENGINEERING DIVISION SHALL FIELD LOCATE WATER VALVES ONE TIME DURING CONSTRUCTION WHEN REQUESTED BY THE CONTRACTOR. IT SHALL BE THE CONTRACTOR'S RESPONSIBILITY TO PRESERVE SUCH FIELD LOCATIONS DURING THE CONSTRUCTION PROCESS. WATER VALVES, VALVE BOXES OR FIRE HYDRANTS DAMAGED DURING CONSTRUCTION SHALL BE REPAIRED BY CONTRACTOR AT HIS OWN EXPENSE. VALVE BOXES AND WATER METERS WITHIN THE PROJECT LIMITS SHALL BE ADJUSTED TO MATCH FIELD GRADES BY THE CONTRACTOR.
- THE CONTRACTOR SHALL NOTIFY THE CONSULTANT ENGINEER AND TOM MASON AT 316-268-4574 WITH THE CITY OF WICHITA WITH THE ANTICIPATED CONSTRUCTION START DATE AND NOTIFY THEM OF PROJECT COMPLETION. STAKING AND INSPECTION FOR THIS PROJECT WILL BE THE RESPONSIBILITY OF THE CONTRACTOR.
- IF TRAFFIC WILL BE IMPACTED BY CONSTRUCTION, A TRAFFIC CONTROL PLAN MUST BE SUBMITTED AND APPROVED BY THE CITY TRAFFIC ENGINEER, BRIAN COON AT traffic@wichita.gov BEFORE CONSTRUCTION CAN BEGIN. THE CONTRACTOR SHALL BE RESPONSIBLE FOR ALL TRAFFIC CONTROL MEASURES TO FACILITATE CONSTRUCTION. ALL CONSTRUCTION ZONE MARKINGS AND SIGNAGE SHALL CONFORM TO THE LATEST VERSION OF THE MANUAL ON UNIFORM TRAFFIC CONTROL DEVICES (MUTCD) AS PUBLISHED BY THE US DEPT. OF TRANSPORTATION, FEDERAL HIGHWAY ADMINISTRATION. ALL COSTS ASSOCIATED WITH CONSTRUCTION MARKINGS AND SIGNAGE SHALL BE THE CONTRACTOR'S RESPONSIBILITY.
- ALL ELEVATIONS SHOWN ARE DATUM (NAVD 88).
- ALL AREAS DISTURBED DURING CONSTRUCTION THAT WILL NOT BE UNDER PROPOSED PAVEMENT SHALL BE RESTORED TO MATCH EXISTING CONDITIONS.
- ANY SIDEWALK, DRIVE APPROACH, OR STREET PAVEMENT REMOVED TO CONSTRUCT PROJECT MUST HAVE A PAVEMENT CUT PERMIT AND BE REPLACED BY CITY CONTRACTOR. PERMITS CAN BE OBTAINED BY CALLING 316-268-4501 OR 316-268-4480.
- CITY MAINTENANCE OF STORM SEWER ENDS AT THE LAST STRUCTURE IN THE EASEMENT OR RIGHT-OF-WAY.
- FOLLOW THE LINK BELOW FOR SPECIFIC CITY OF WICHITA STANDARD DETAILS:
<http://www.wichita.gov/government/departments/pw/standardsconstruction>
SW-501, SW-502, SW-503, SW-504, & SW-505
- CONTRACTOR SHALL LIMIT THE EXTENT OF TRENCH OPEN OVERNIGHT AND WEEKENDS TO LESS THAN 50 FEET.
- EXISTING UTILITIES AND THEIR LOCATION, AS SHOWN ON THE PLANS REPRESENT THE BEST INFORMATION OBTAINABLE FOR DESIGN. LOCATION INFORMATION HAS BEEN OBTAINED FROM THE VARIOUS COMPANIES AND IS EITHER FROM COMPANY UTILITY DRAWINGS OR COMPANY PROVIDED FIELD LOCATIONS. THE PLAN LOCATIONS SHOWN ARE NOT GUARANTEED. ADDITIONAL EXISTING UTILITIES MAY ALSO BE ENCOUNTERED.
- A SAW CUT OF AT LEAST ONE-HALF THE DEPTH OF THE EXISTING SURFACE COURSES OR ONE-FOURTH THE DEPTH OF THE EXISTING TOTAL PAVEMENT THICKNESS SHALL BE PROVIDED AT LOCATIONS WHERE PROPOSED CONSTRUCTION ABUTS AN EXISTING SURFACE OR PAVEMENT FOR WHICH PARTIAL REMOVAL OF THAT SURFACE OR PAVEMENT IS REQUIRED. SAW JOINT TO FACILITATE REMOVAL WITHIN THREE (3) FEET OF EXISTING JOINTS WILL NOT BE PERMITTED AND FOR SUCH INSTANCES THE LIMITS OF REMOVAL SHALL EXTEND TO THE EXISTING JOINT. SUCH SAW CUTS WILL NOT BE PAID FOR DIRECTLY AND THIS COST SHALL BE CONSIDERED AS SUBSIDIARY TO THE REMOVAL OF SURFACE OR PAVEMENT.
- DEVELOPER FOR THIS PROJECT IS:
TIER 1, LLC, A KANSAS LIMITED LIABILITY COMPANY
7926 W. 21ST STREET
WICHITA, KANSAS, 67205
MARVIN L. SCHELLENBERG, MANAGING MEMBER
316-721-2153

PRIVATE STORM WATER SEWER AND DRIVE

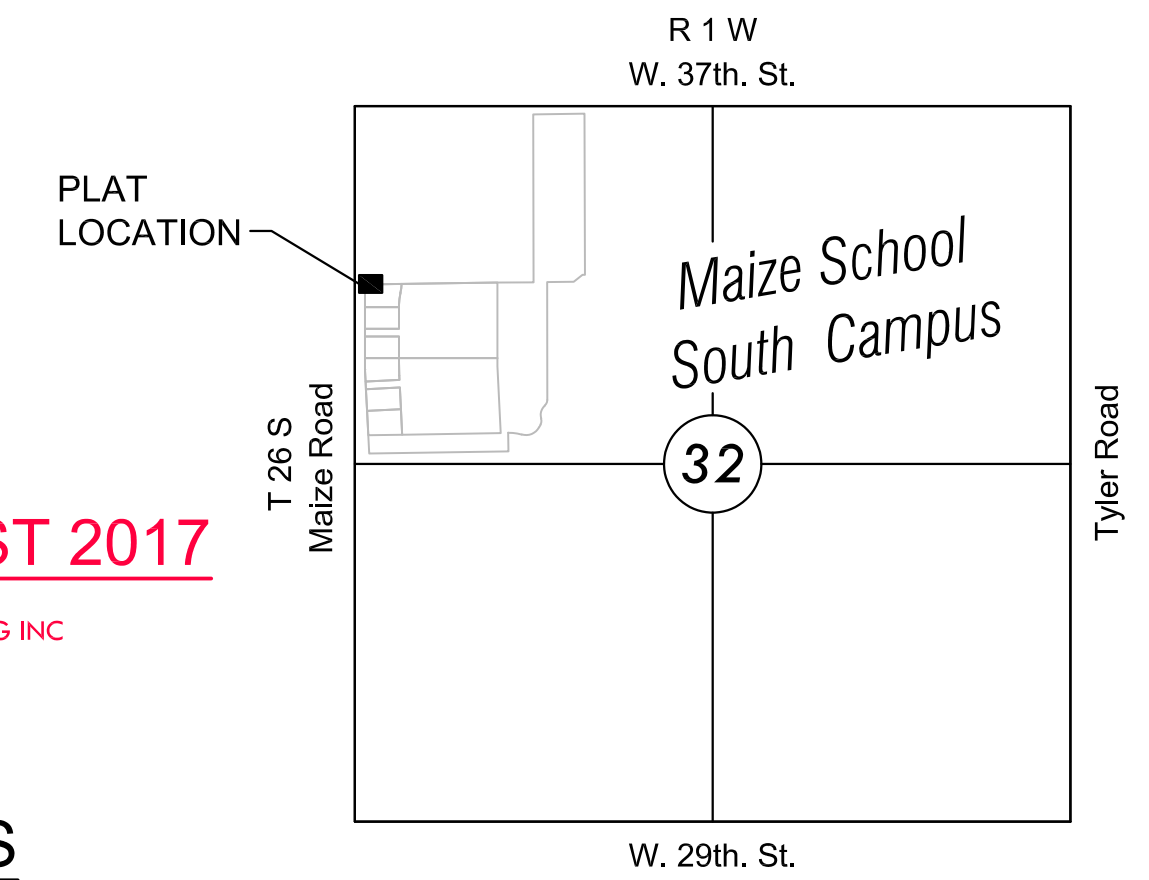
TO SERVE

FOX RIDGE PLAZA ADDITION

3560 N MAIZE RD
WICHITA, KS 67205
PROJECT NO. 0438PPD
THE CITY OF WICHITA, KANSAS
GARY JANZEN, P.E. - CITY ENGINEER
OCA NO. 607861

AS-BUILT PLANS - AUGUST 2017

INSPECTED BY: GENE RATH, MKEC ENGINEERING INC
CONSTRUCTED BY: CONCO CONSTRUCTION
SUPERINTENDENT: RICK TALBOTT
SUPPLIER: WICHITA CONCRETE PIPE

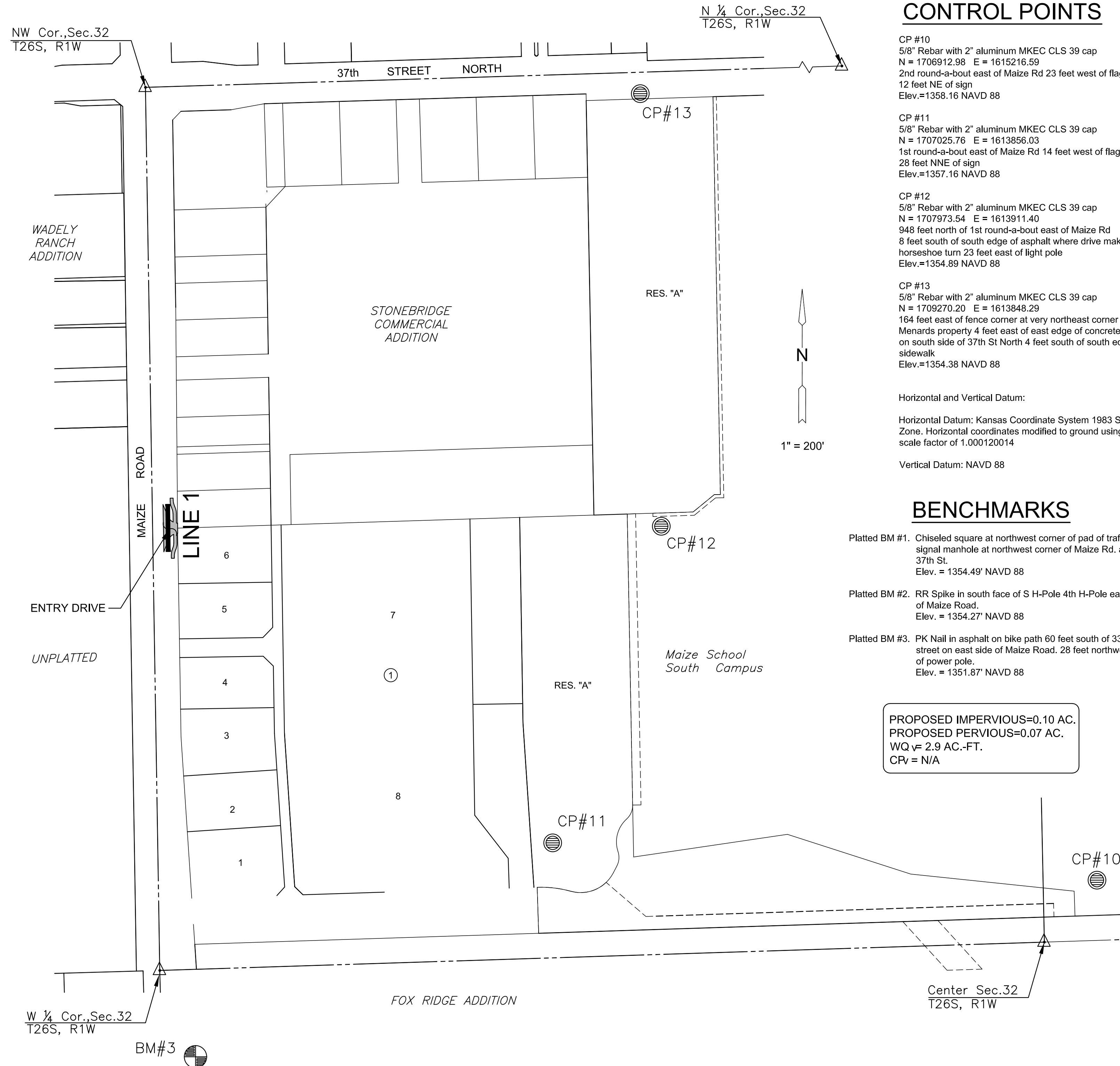
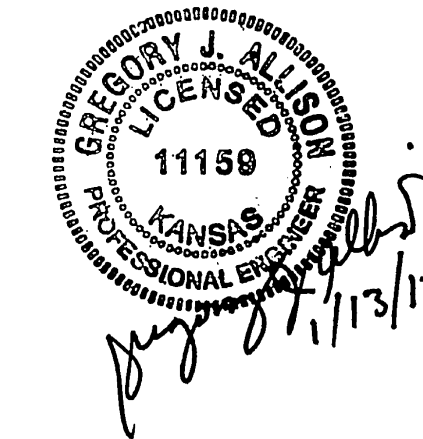


VICINITY MAP

No Scale

INDEX TO DRAWINGS

SHEET NO.	DESCRIPTION
1	TITLE SHEET
2	SWS LINE 3
3	ENTRY DRIVE
4	VALLEY GUTTER DETAILS



CONTROL POINTS

- CP #10
5/8" Rebar with 2" aluminum MKEC CLS 39 cap
N = 1706912.98 E = 1615216.59
2nd round-a-bout east of Maize Rd 23 feet west of flag pole
12 feet NE of sign
Elev.=1358.16 NAVD 88
- CP #11
5/8" Rebar with 2" aluminum MKEC CLS 39 cap
N = 1707025.76 E = 1613856.03
1st round-a-bout east of Maize Rd 14 feet west of flag pole
28 feet NNE of sign
Elev.=1357.16 NAVD 88
- CP #12
5/8" Rebar with 2" aluminum MKEC CLS 39 cap
N = 1707973.54 E = 1613911.40
948 feet north of 1st round-a-bout east of Maize Rd
8 feet south of south edge of asphalt where drive makes a
horseshoe turn 23 feet east of light pole
Elev.=1354.89 NAVD 88
- CP #13
5/8" Rebar with 2" aluminum MKEC CLS 39 cap
N = 1709270.20 E = 1613848.29
164 feet east of fence corner at very northeast corner of
Menards property 4 feet east of east edge of concrete drive
on south side of 37th St North 4 feet south of south edge of
sidewalk
Elev.=1354.38 NAVD 88
- Horizontal and Vertical Datum:
Horizontal Datum: Kansas Coordinate System 1983 South
Zone. Horizontal coordinates modified to ground using a
scale factor of 1.000120014
Vertical Datum: NAVD 88

BENCHMARKS

- Platted BM #1. Chiseled square at northwest corner of pad of traffic signal manhole at northwest corner of Maize Rd. and 37th St.
Elev. = 1354.49' NAVD 88
- Platted BM #2. RR Spike in south face of S H-Pole 4th H-Pole east of Maize Road.
Elev. = 1354.27' NAVD 88
- Platted BM #3. PK Nail in asphalt on bike path 60 feet south of 33rd street on east side of Maize Road. 28 feet northwest of power pole.
Elev. = 1351.87' NAVD 88

PROPOSED IMPERVIOUS=0.10 AC.
PROPOSED PERVIOUS=0.07 AC.
WQ_v = 2.9 AC.-FT.
CR_v = N/A

Stormwater Certification:
New Development

These construction plans were prepared in accordance with the current Stormwater Management Regulations as set forth in the City of Wichita's Stormwater Management Ordinance 16.32 and the policies/guidelines presented in the Wichita/Sedgwick County Stormwater Manual.

Disturbed Area = 0.17 AC.
Water Quality Treatment: 5.1 AC.-FT. (Ex. Pond)
Downstream Channel Protection: N/A
Detention: 29 AC.-FT. (Ex. Pond)
The BMP used for this development is seeding.

**APPROVED AS NOTED
BY WICHITA PUBLIC WORKS ENGINEERING
AND STORMWATER DIVISION**

Engineering: *Reber Jif Vasbot*
Storm Water: *Joe Hilde PE 1/31/17*

NOTE TO CONTRACTORS

Inspection and testing for this project is to be provided by a Licensed Consulting Engineering Firm under contract with the Owner/Developer. Said inspection to be in accordance with the City of Wichita standard construction engineering practices and certified by a Licensed Professional Engineer in the state of Kansas. No work shall be performed by the Contractor without such inspection, nor shall any work be commenced without written authorization by the City Engineer. All Construction and Materials shall comply with the current City of Wichita Specifications and Standards and Special Provisions. (on file and available at Wichita.gov).

An approved copy of these plans signed by City staff are required on-site.



FOX RIDGE PLAZA ADDITION

©2017 MKEC Engineering All Rights Reserved
These drawings and their contents, including, but not limited to, all concepts, designs, & ideas are the exclusive property of MKEC Engineering (MKEC), and may not be used or reproduced in any way without the express consent of MKEC.

TITLE SHEET

PROJECT NO.	0438PPD	
DATE	DEC. 2016	
SCALE	1" = 200'	
DESIGNED	DRAWN	CHECKED
DFL	JWC	GJA
NO.	REVISION	DATE
SHEET NO.		
01 OF 04		

J:\PROJECTS\2011101010577 - PREMIER FOX RIDGE PLAZA\SC\PAV\LANE STRIPING\PRIVATE ENTRY\1577_DP-01P.DWG
 PLOTTED: Friday, September 01, 2017 @ 10:31AM

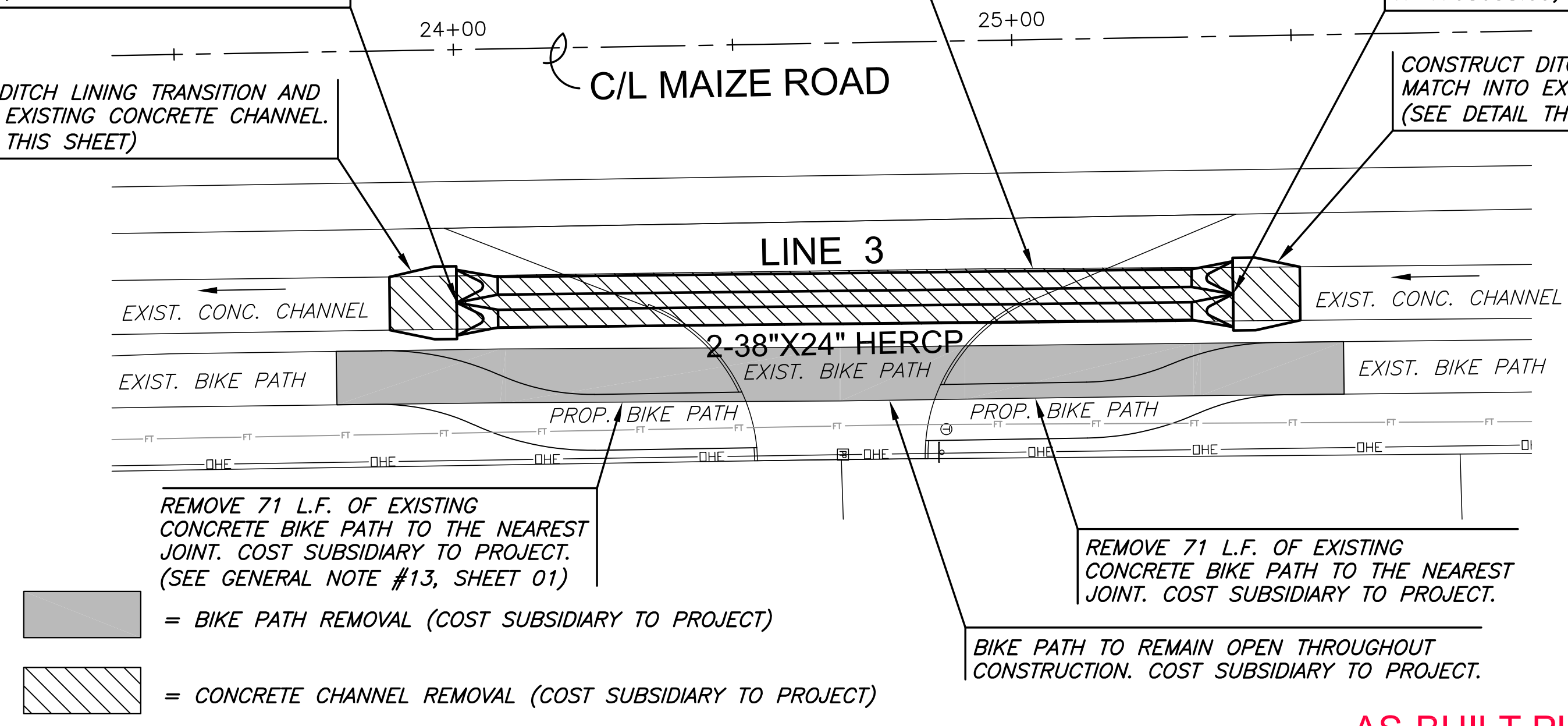
STA. 10+00.0, LINE 3=
 ST. STA. 23+99.61, 45.1' RT.
 INSTALL (2) 38"x24" CONCRETE RESTRAINED
 END SECTIONS & (2) ADJACENT PIPE JOINTS.
 N=1707899.10, E=1612434.42

REMOVE 162 L.F. OF EXISTING
 CONCRETE CHANNEL TO THE NEAREST
 JOINT. COST SUBSIDIARY TO PROJECT.

STA. 11+39.0, LINE 3=
 ST. STA. 25+38.84, 46.2' RT.
 INSTALL (2) 38"x24" CONCRETE RESTRAINED
 END SECTIONS & (2) ADJACENT PIPE JOINTS.
 N=1708038.09, E=1612432.90

CONSTRUCT DITCH LINING TRANSITION AND
 MATCH INTO EXISTING CONCRETE CHANNEL.
 (SEE DETAIL THIS SHEET)

CONSTRUCT DITCH LINING TRANSITION AND
 MATCH INTO EXISTING CONCRETE CHANNEL.
 (SEE DETAIL THIS SHEET)



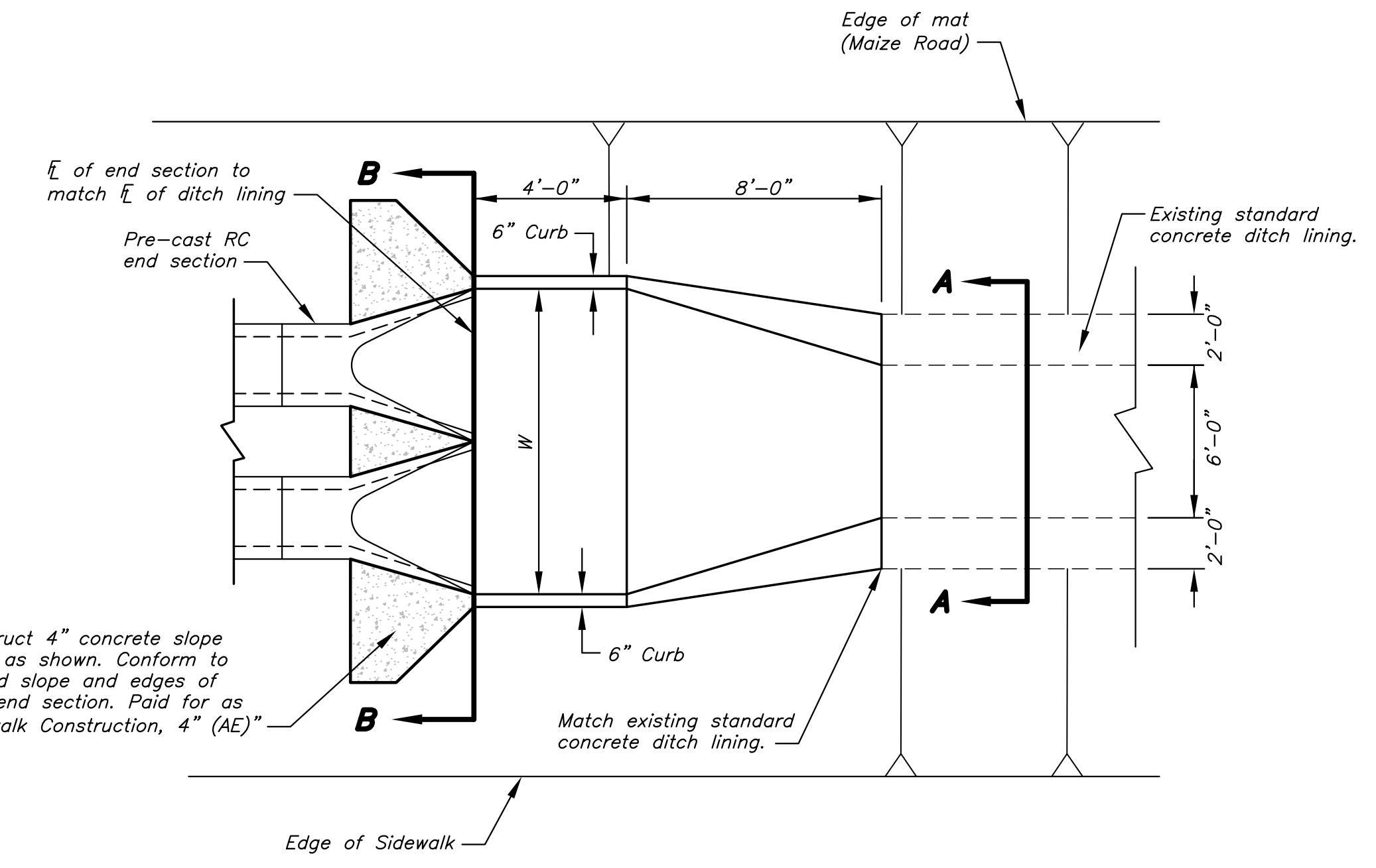
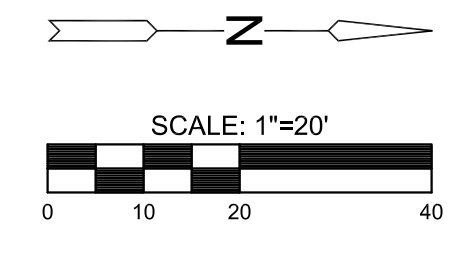
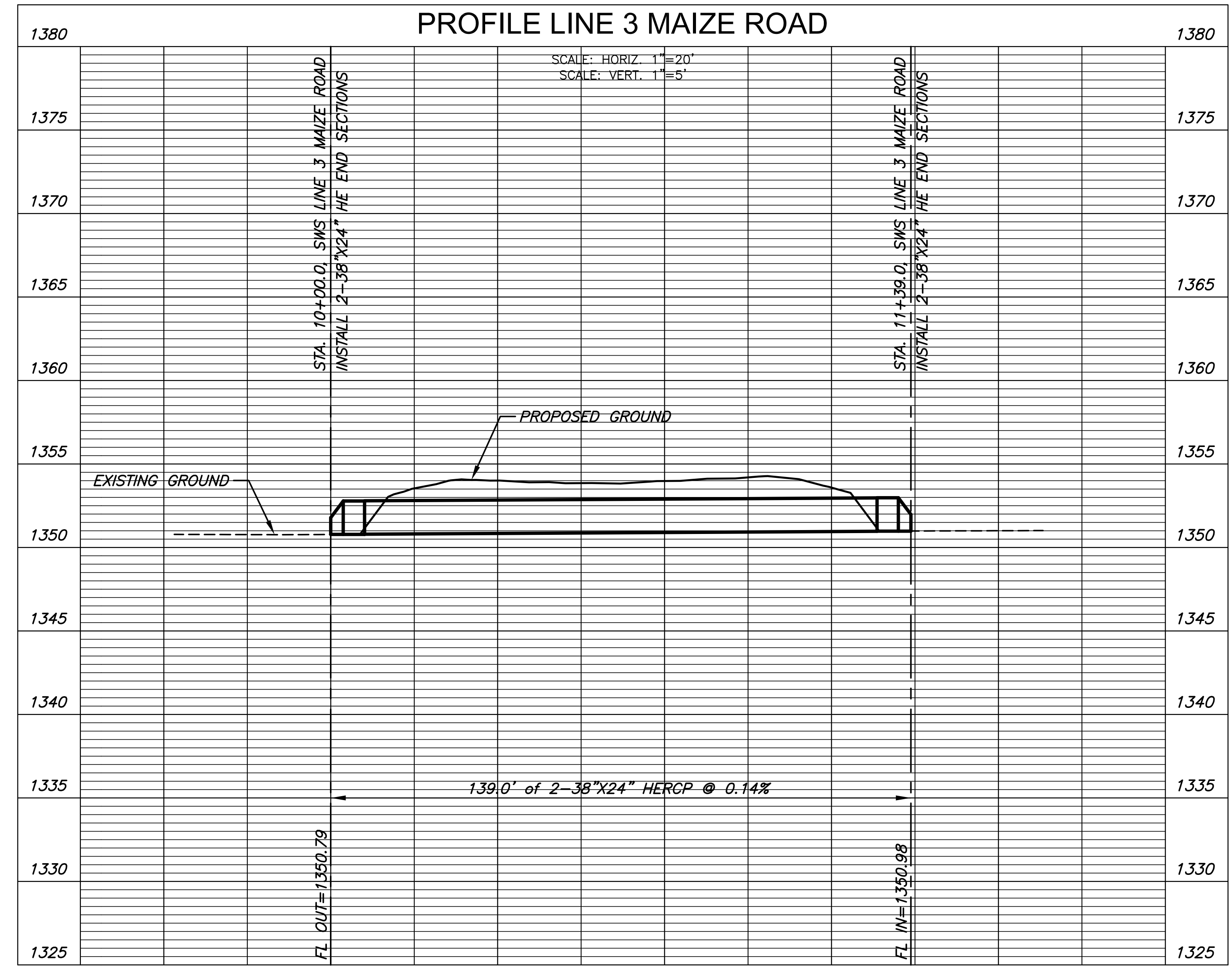
REMOVE 71 L.F. OF EXISTING
 CONCRETE BIKE PATH TO THE NEAREST
 JOINT. COST SUBSIDIARY TO PROJECT.
 (SEE GENERAL NOTE #13, SHEET 01)

REMOVE 71 L.F. OF EXISTING
 CONCRETE BIKE PATH TO THE NEAREST
 JOINT. COST SUBSIDIARY TO PROJECT.

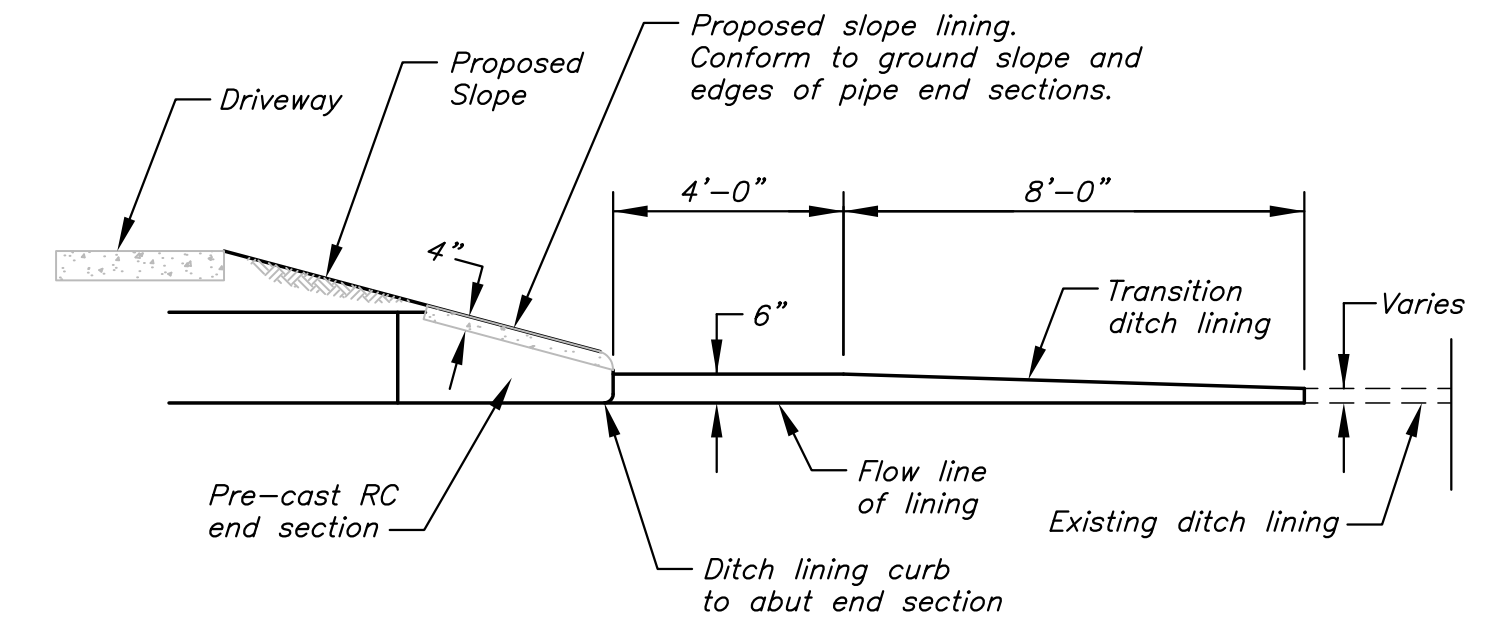
= BIKE PATH REMOVAL (COST SUBSIDIARY TO PROJECT)
 = CONCRETE CHANNEL REMOVAL (COST SUBSIDIARY TO PROJECT)

PLAN LINE 3 MAIZE ROAD
PROFILE LINE 3 MAIZE ROAD

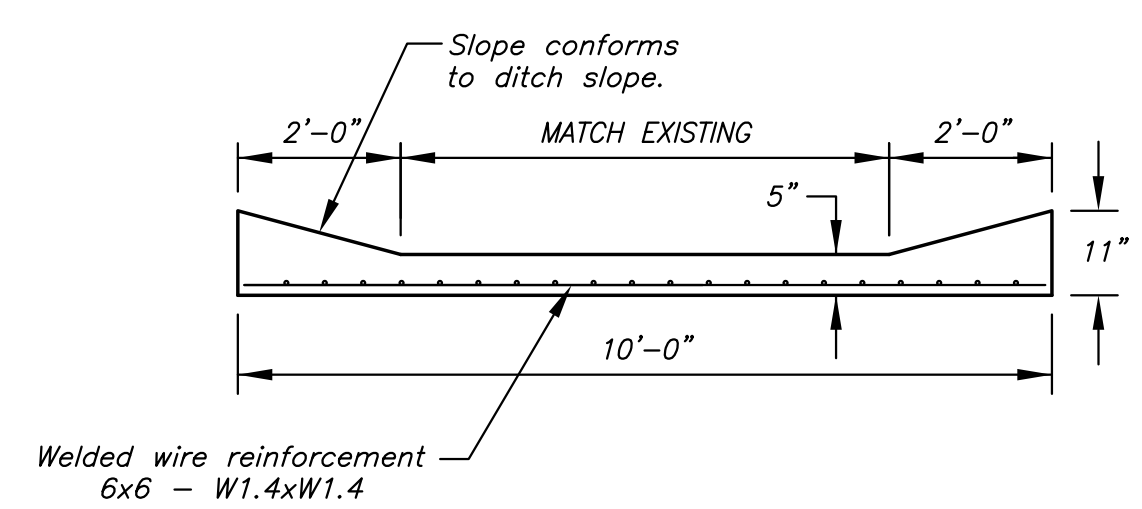
AS-BUILT PLANS - AUGUST 2017



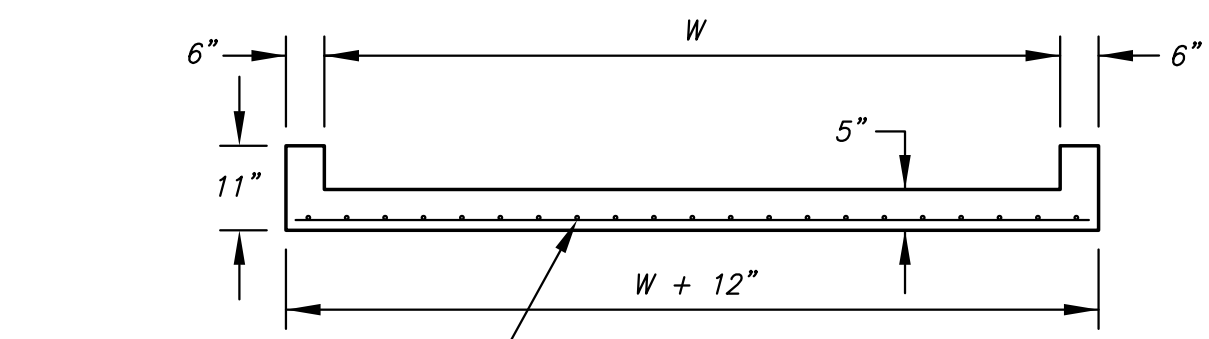
STANDARD DITCH LINING TRANSITION PLAN



DITCH LINING ELEVATION VIEW



SECTION A-A



SECTION B-B

©2017
 MKEC Engineering
 All Rights Reserved
 www.mkec.com
 These drawings and their contents, including, but not limited to, all concepts, designs, & ideas are the exclusive property of MKEC Engineering (MKEC), and may not be used or reproduced in any way without the express consent of MKEC.

SWS LINE 3

PROJECT NO.	0438PPD	
DATE	DEC. 2016	
SCALE	1" = 20'	
DESIGNED	DRAWN	CHECKED
DFL	JWC	GJA

NO.	REVISION	DATE
-----	----------	------

SHEET NO.