

FHWA REGION NO.	STATE	PROJECT NUMBER	FISCAL YEAR	SHEET NUMBER	TOTAL SHEETS
7	KANSAS	87N-0191-01	2002	34	92

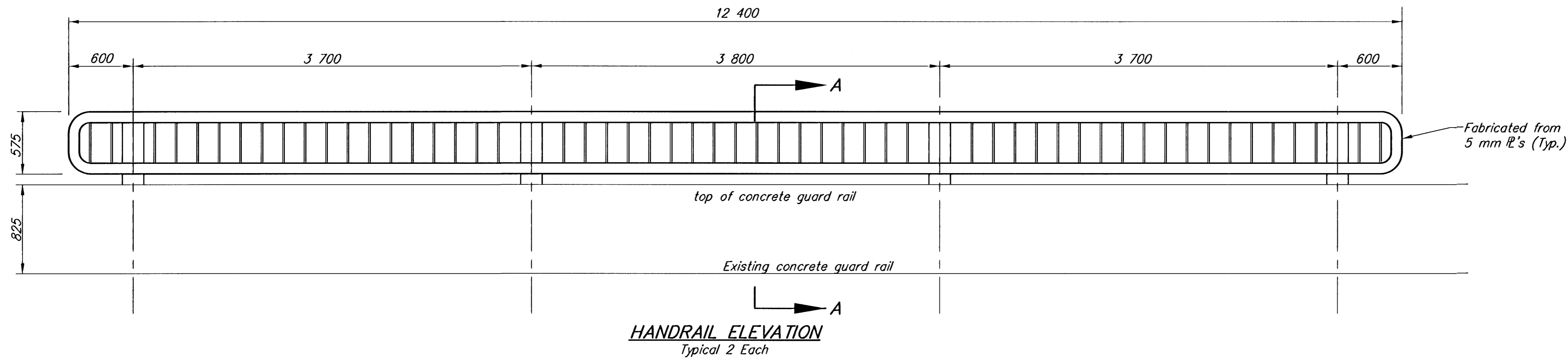
**BRIDGE HANDRAIL NOTES:**

The rail members shall conform to ASTM Designation A36 or equivalent.

Rail shall be fabricated in lengths to include a minimum of two and a maximum of three panels. Posts shall be set vertical. Shims may be used between concrete and base plates of posts.

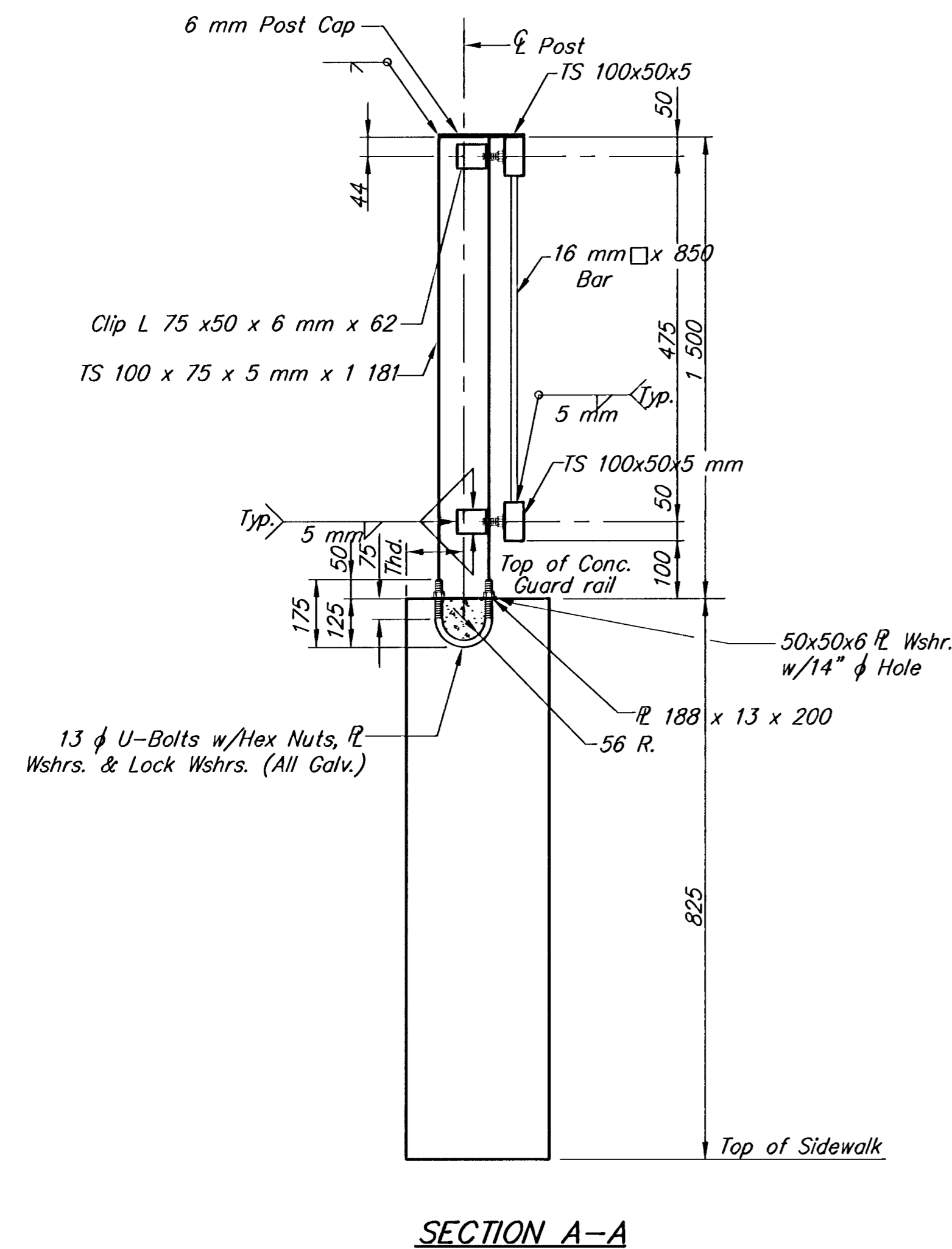
All parts of Bridge Handrail shall be painted. Shop and field coats shall conform to organic or inorganic Zinc for primer and "High-Build Polyurethane Finish Coat" at the Standard Specifications for State Road and Bridge Construction, 1990 Edition, Kansas Department of Transportation. All materials, equipment and labor necessary for the installation of the Handrail on the bridge shall be subsidiary to the bid item, "Handrail".

Handrail shall be hunter Green in color. Contractor to submit color chart to Engineer for approval. Touch Up: All bolts, nuts and studs and other small areas of damaged paint (0.929 m<sup>2</sup> or less) requiring touch up will be prepared and painted w/approved aluminum epoxy mastic primer.

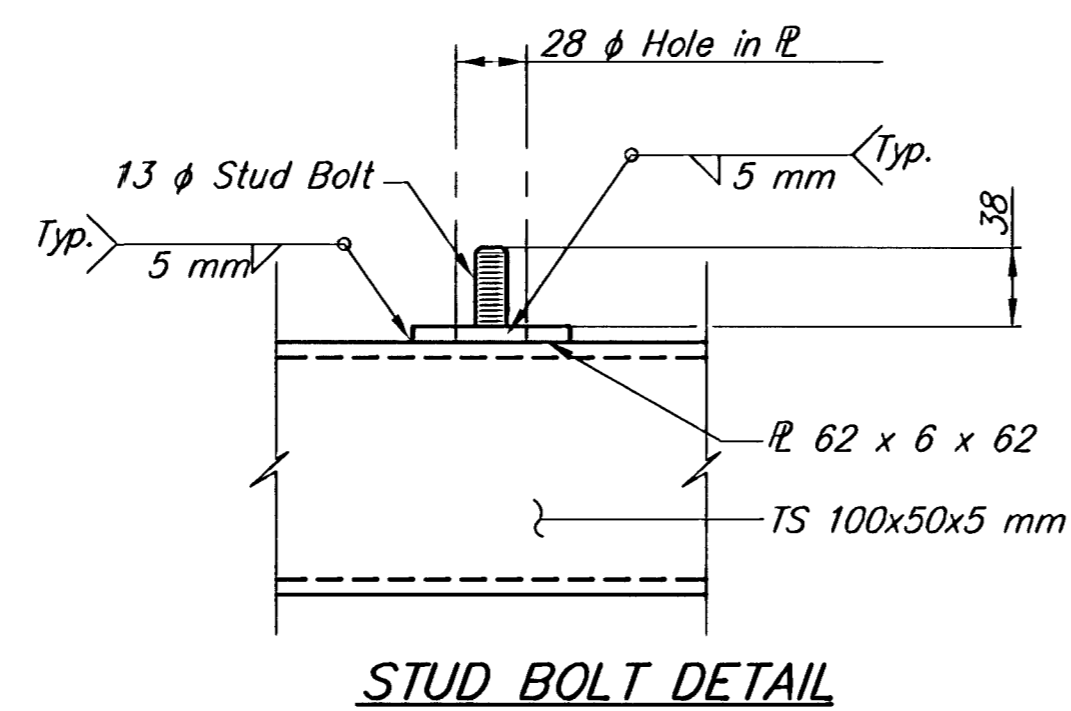


**HANDRAIL ELEVATION**  
Typical 2 Each

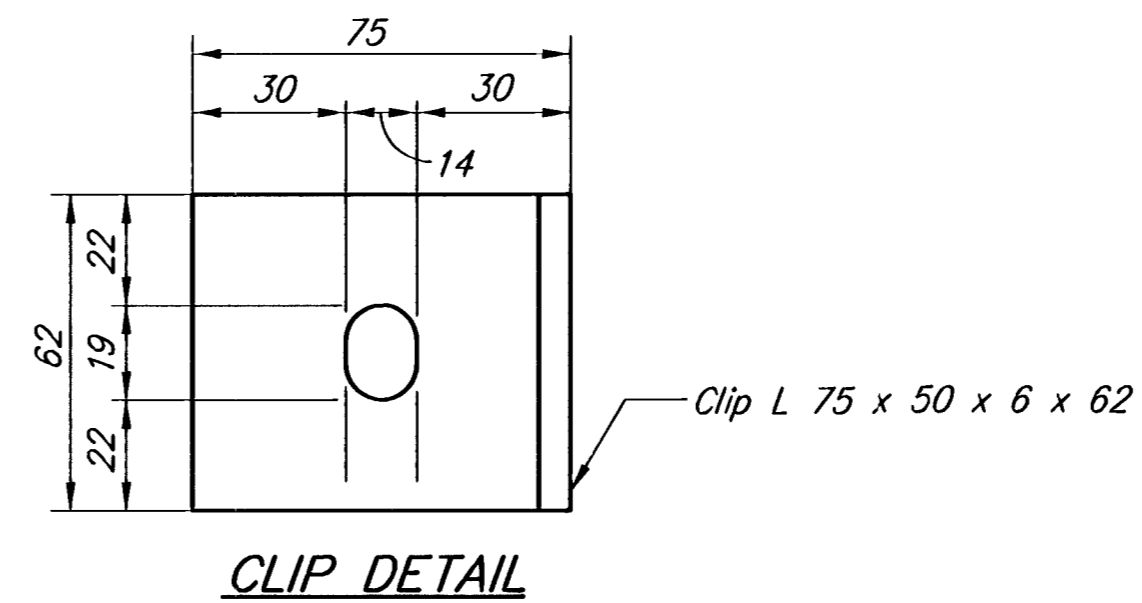
HANDRAIL TABLE	
EACH	RAIL LENGTH
2	12 400
<b>TOTALS</b>	<b>24 800</b>



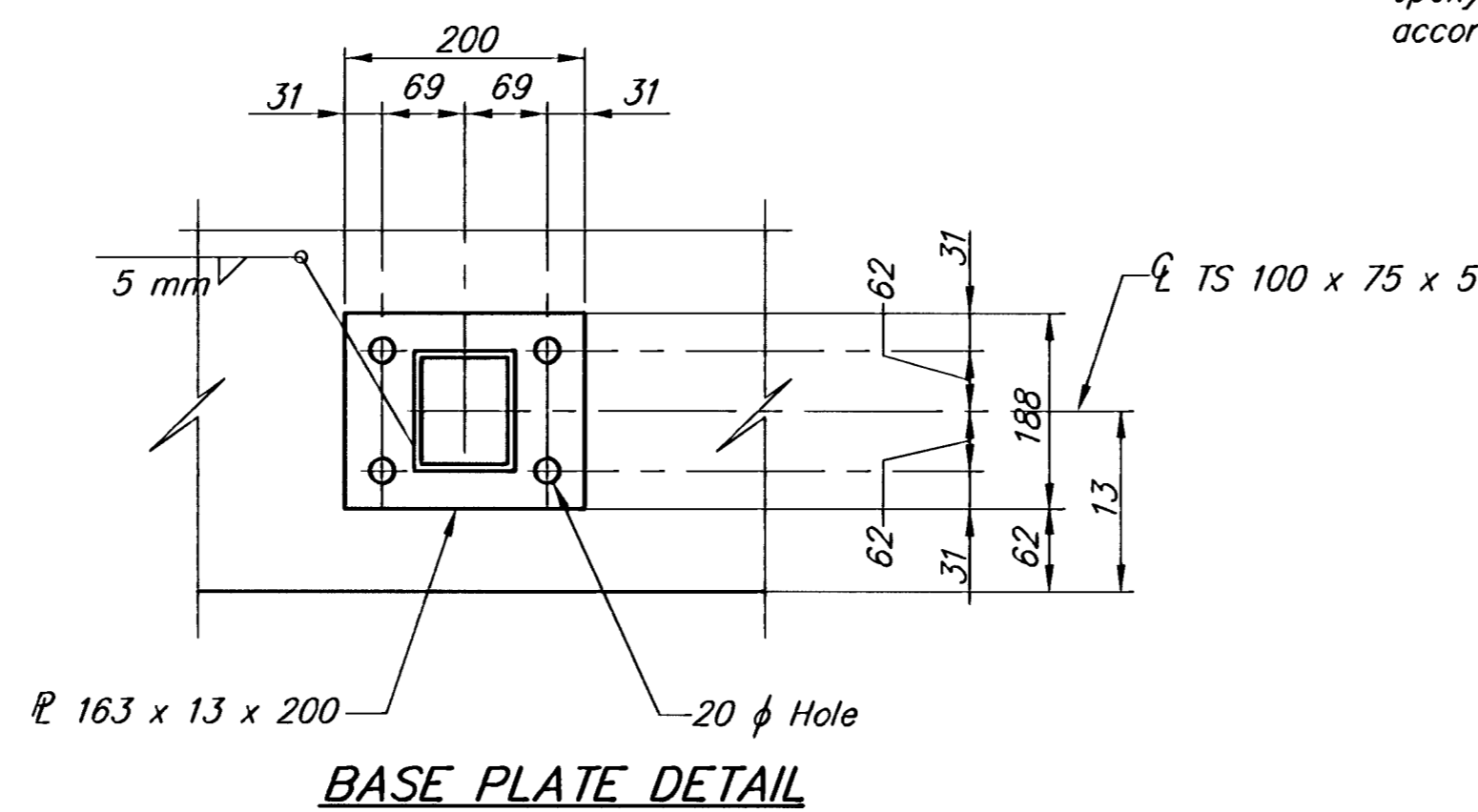
**SECTION A-A**



**STUD BOLT DETAIL**

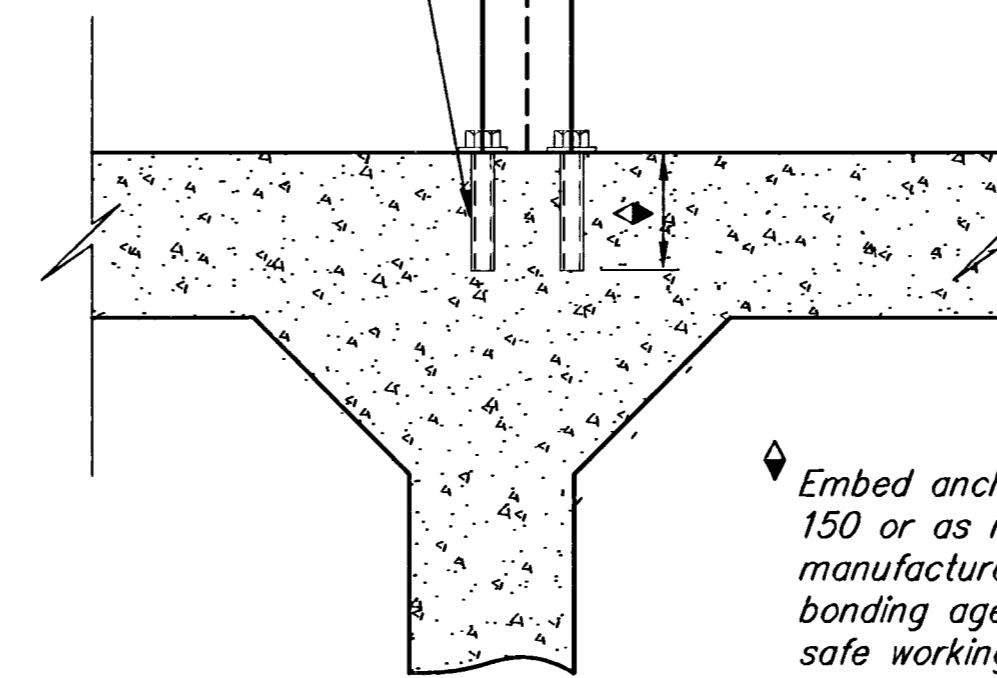


**CLIP DETAIL**

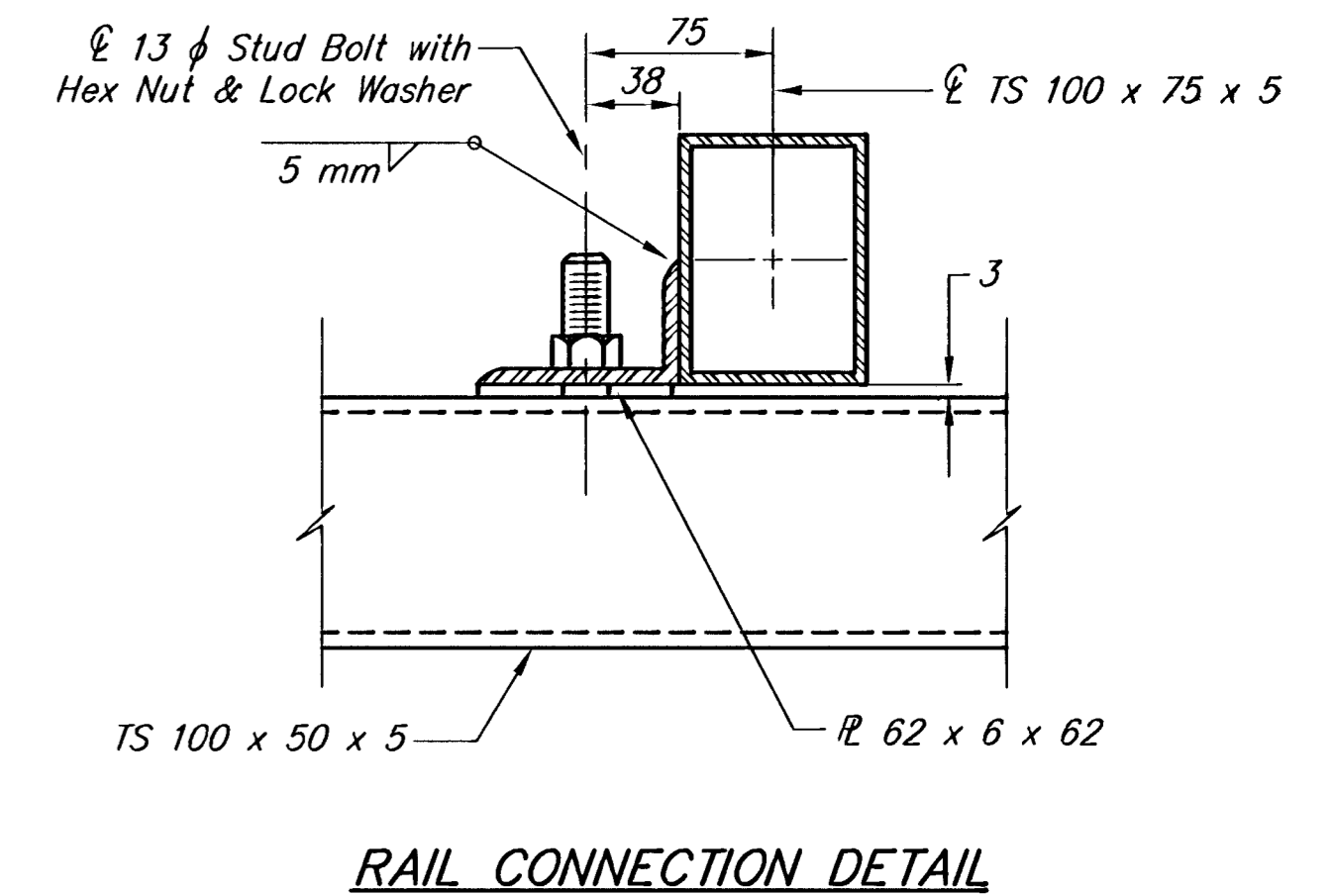


**BASE PLATE DETAIL**

19 Dia. A36 Threaded Rod to be grouted with an approved epoxy or polyester resin in accordance with KDOT Specifications

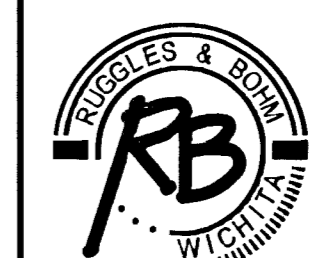


**ANCHOR ROD DETAIL**



**RAIL CONNECTION DETAIL**

**HARRY STREET IMPROVEMENTS  
HANDRAIL DETAILS  
WICHITA, KANSAS**



Ruggles & Bohm, P.A.  
Engineering, Surveying, Land Planning  
924 North Main  
Wichita, Kansas 67203  
www.rbkansas.com  
(316) 264-8008  
(316) 264-4621 fax  
E-mail: info@rbkansas.com

DRAWING FILE HDRAIL1-METRIC	PROJECT NUMBER 472-83685	DATE Feb. 3, 2003	DESIGN MWS	DRAWN TEB	REVIEW TEB	UTILITY	SHEET 34 OF 92
--------------------------------	-----------------------------	----------------------	---------------	--------------	---------------	---------	-------------------------

DATE	
BY	
REFERENCES NOTED	
REFERENCES CHECKED	