

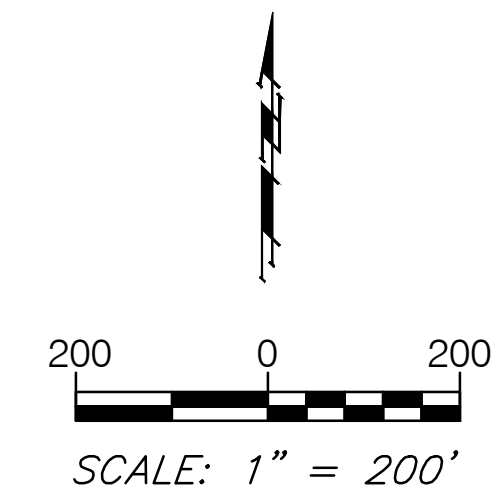
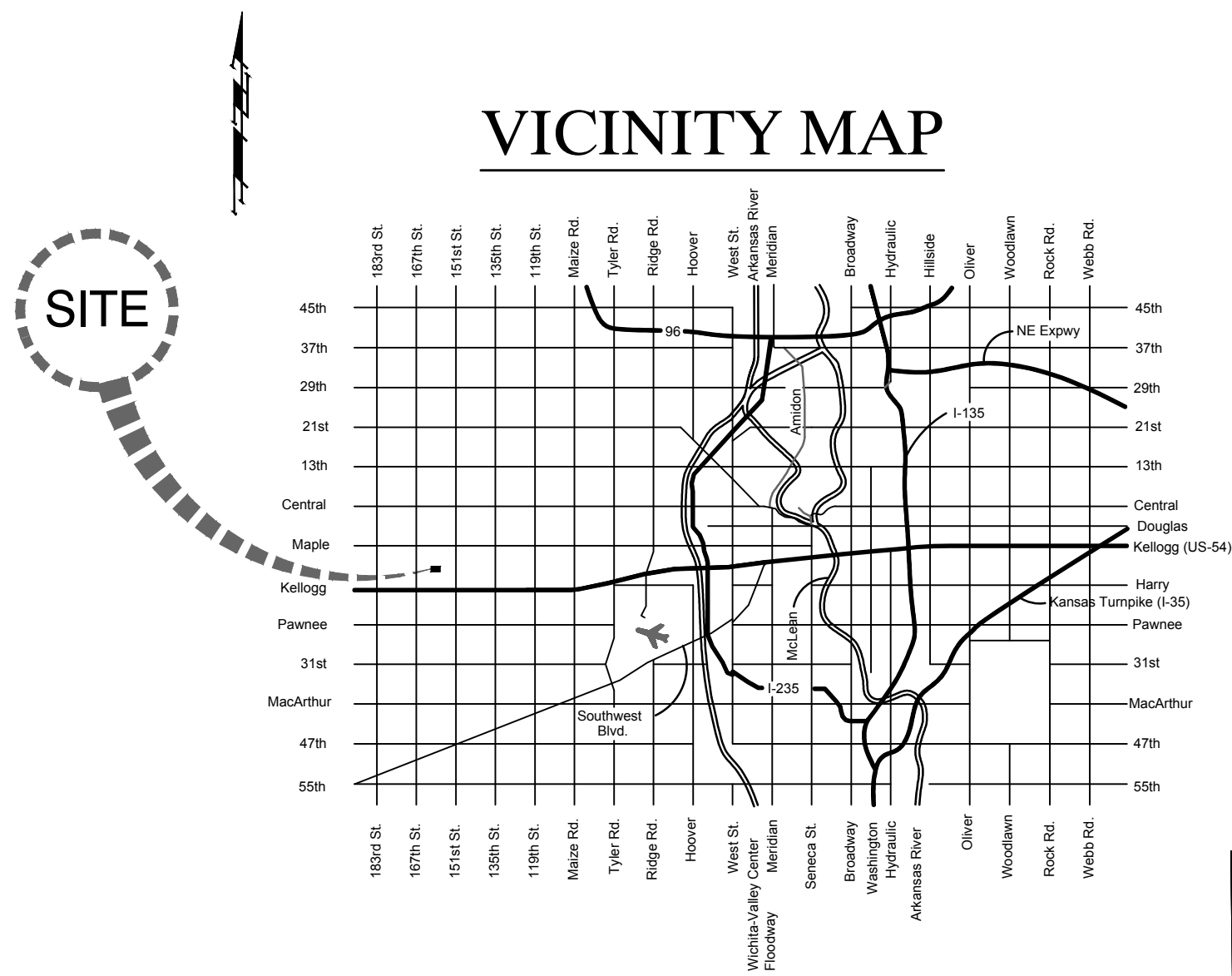
WATER MAIN CONNECTION
 BETWEEN
GODDARD SCHOOL 2ND ADDITION
 AND
REECE FARMS ESTATES ADDITION
 FOR

SEDGWICK COUNTY, KANSAS
THE CITY OF WICHITA,
 Gary Janzen, P.E., City Engineer

City Project No. - 448-90808
 O.C.A. No. - 637403

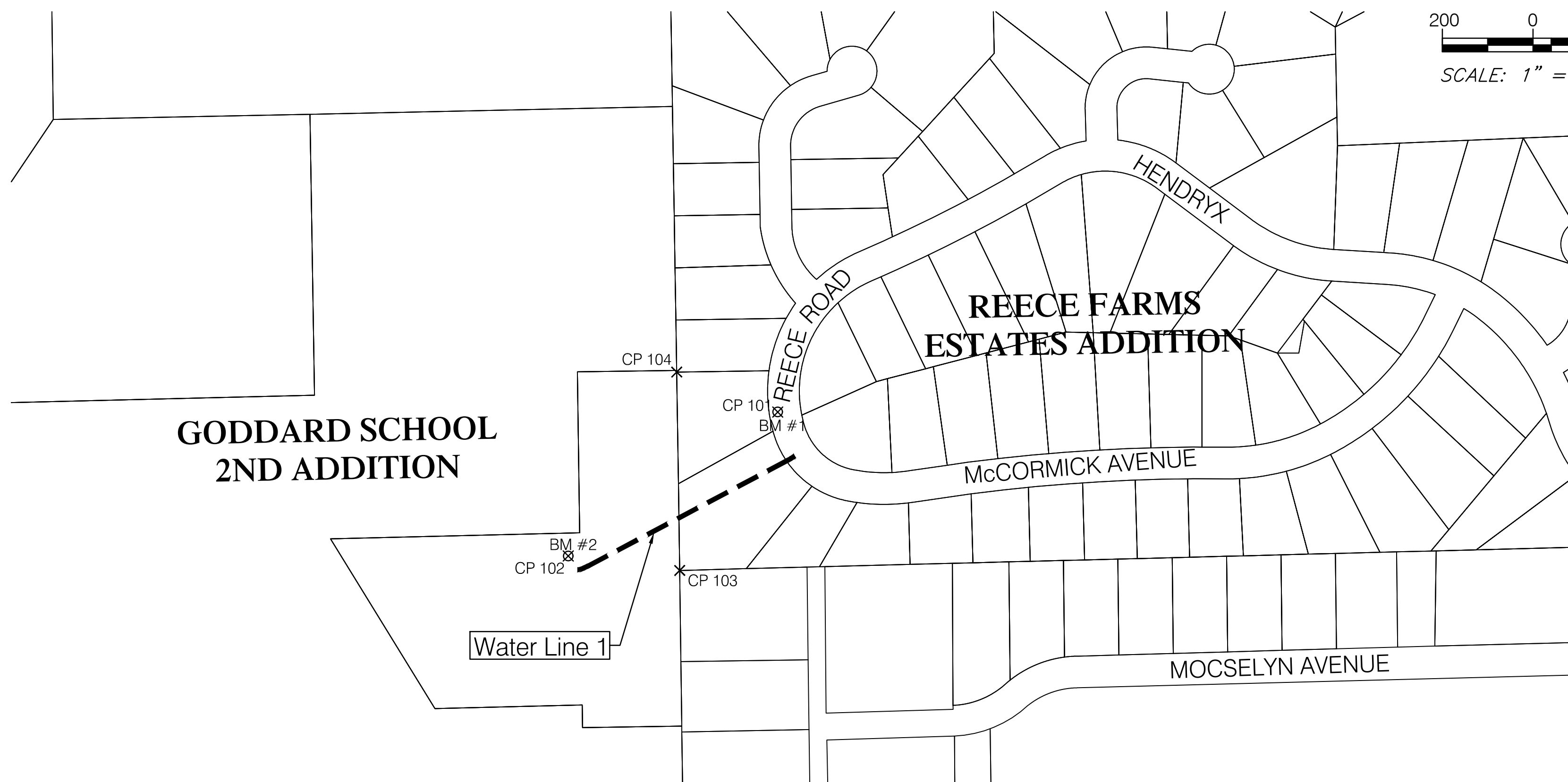
Index

- 1 Title Sheet
- 2 Notepage
- 3 Water Line 1
- 4-5 Standard Details
- 6-10 Erosion Control Details



BENCHMARKS:

- BM #1 - Mag Nail with Washer at the High Edge Joint of Reece Road just South of the Drive to 607 S. Reece Road.
Elev. = 1419.62 (NGVD 29)
- BM #2 - Chiseled "X" on the Back of Curb 20' West of Sanitary Sewer Manhole.
Elev. = 1427.44 (NGVD 29)



CONTROL POINTS:

- CP 101 - Mag Nail w/ Washer
N-5344.947
E-5228.093
- CP 102 - Chiseled "X"
N-5017.865
E-4766.102
- CP 103 - 3/4" Iron Pipe
N-5000.000
E-5000.000
- CP 104 - #4 Rebar
N-5000.871
E-5190.982



August 2017