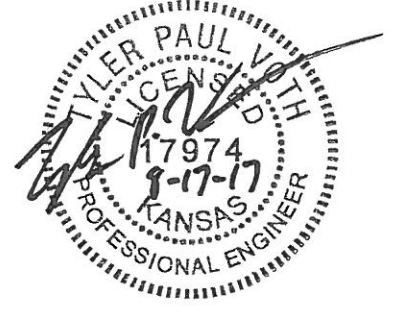
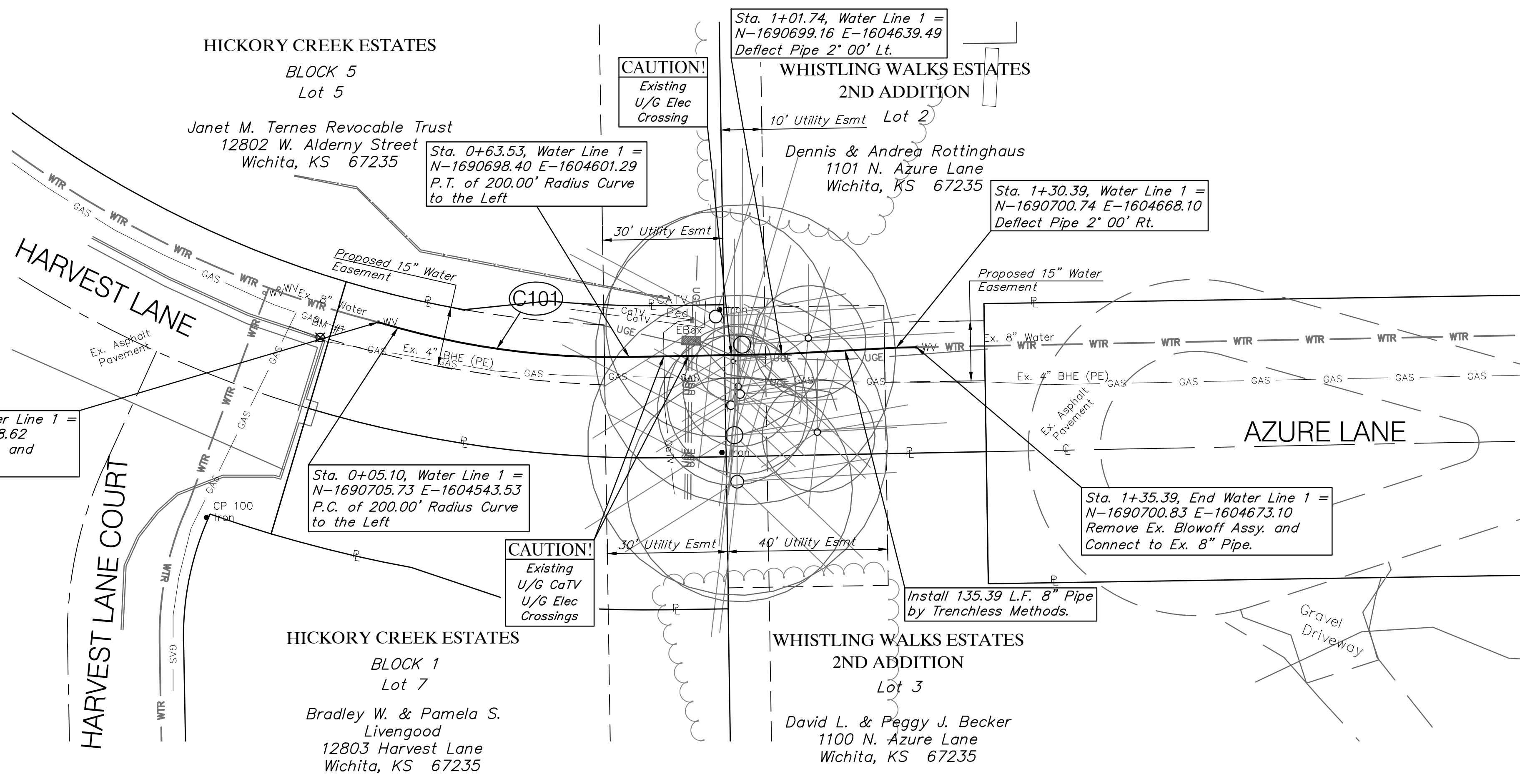
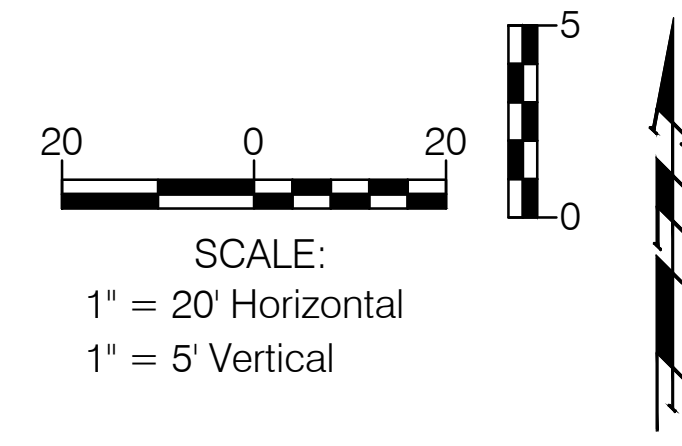


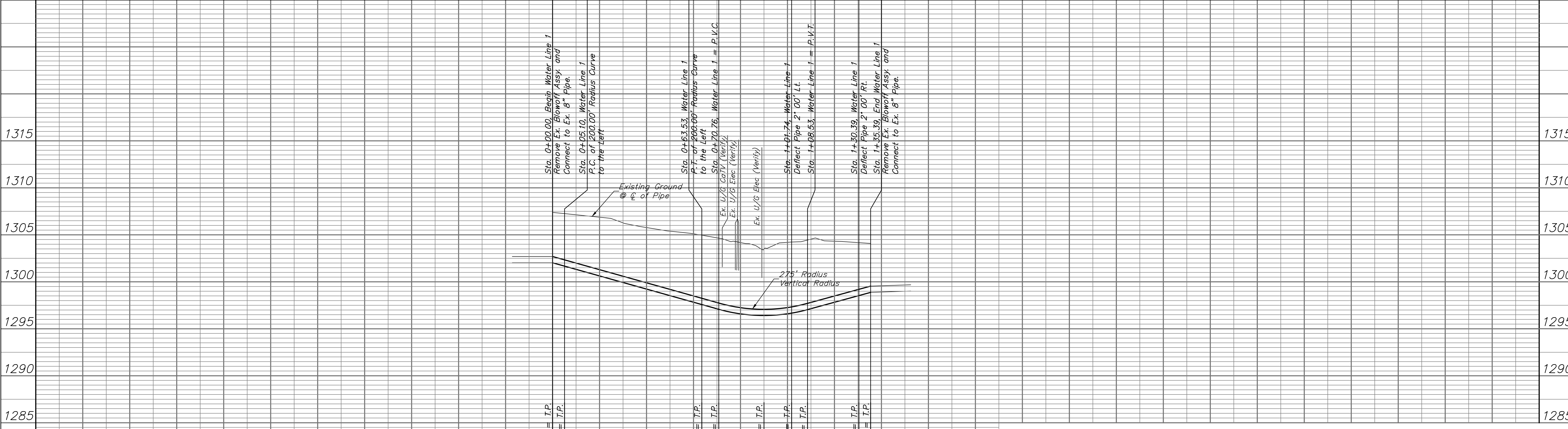
BENCHMARKS:

BM #1 - Chiseled "X" on the Back of the North Curb at the East End of Harvest Lane.
Elev. = 1347.42 (NAVD 88)

BM #2 - Chiseled "X" on the Sidewalk at the Southwest Property Corner of 12802 W. Alderny Street.
Elev. = 1346.70 (NAVD 88)



Prior to Beginning Construction, The Contractor Shall Excavate the Ex. 8" Water Lines at Sta. 0+00.00 and Sta. 1+35.39 to Verify Size and Location. All Necessary Adjustments to the Proposed and Existing Water Lines to Make the Connections, Including Additional Water Line and Fittings, Shall be Considered **SUBSIDIARY** to the Water Line Installations.



Drawing File: E:\Projects\Hickory Creek-Whistling Walks-Water\Basc.dwg [Water 01]
Project No. 1702E667 CAPITAL IMPROVEMENT PROJECT

Design: TPV
Drawn: TPV
Approved: TPV
Scale: NOTED

WATER MAIN CONNECTION
HICKORY CREEK ESTATES & WHISTLING WALKS 2ND ADDITION WATER MAIN CONNECTION

Baughman Company, P.A.
315 Ellis St. Wichita, KS 67211 P 316-262-2271 F 316-262-0149
ENGINEERING | SURVEYING | PLANNING | LANDSCAPE ARCHITECTURE