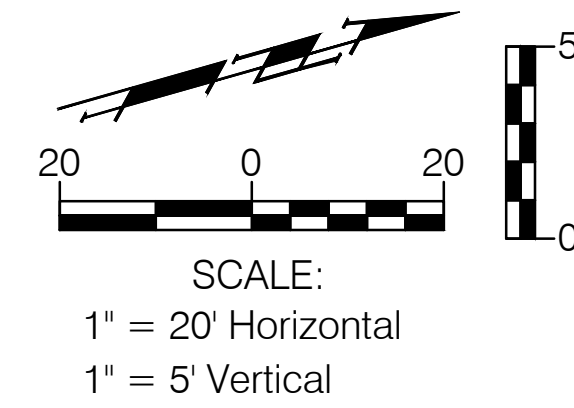


BENCHMARK:
 BM #1 - Chisled "X" on the Back of Curb just West of the Wheelchair Ramp of the South Side of School Street.
 Elev. = 1317.65 (NAVD 88)

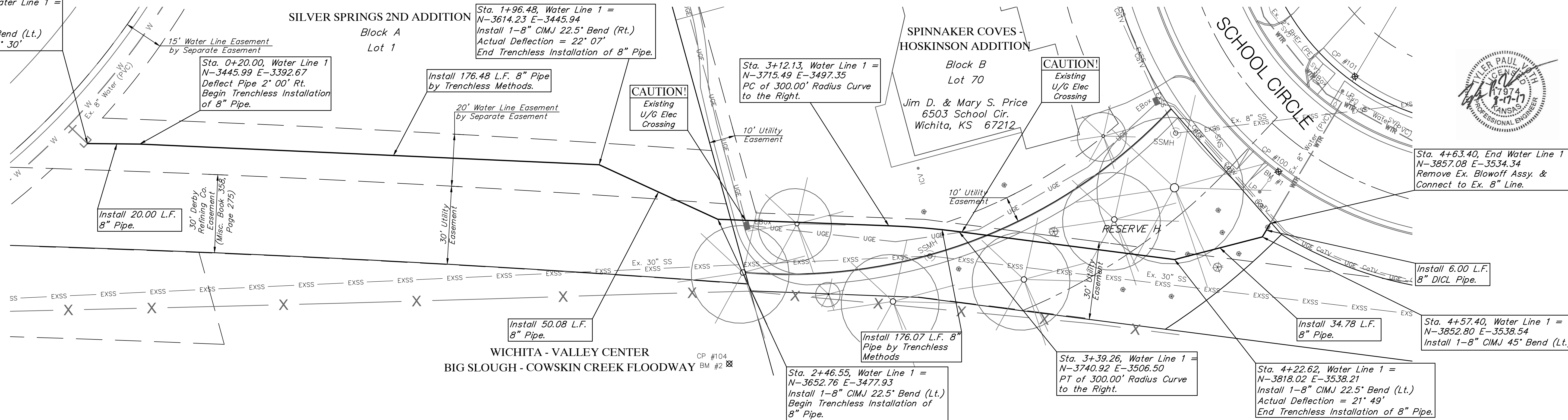
BM #2 - #4 Rebar with Orange Topo Cap.
 Elev. = 1312.92 (NAVD 88)

The Contractor Shall Install the 8" Water Line by Trenchless Methods Under the Dirt Stockpile from Sta. 0+20.00 to Sta. 1+96.48.

Prior to Beginning Construction, The Contractor Shall Excavate the Ex. 8" Water Lines at Sta. 0+00.00 and Sta. 4+63.40 to Verify Size and Location. All Necessary Adjustments to the Proposed and Existing Water Lines to Make the Connections, Including Additional Water Line and Fittings, Shall be Considered **SUBSIDIARY** to the Water Line Installations.



Sta. 0+00.00, Begin Water Line 1 = N-3426.72 E-3387.30
 Remove Ex. 8" Cap.
 Install 1-8" CIMJ 45° Bend (Lt.)
 Actual Deflection = 43° 30'



Sta. 4+63.40, End Water Line 1 = N-3857.08 E-3534.34
 Remove Ex. Blowoff Assy. & Connect to Ex. 8" Line.

Install 6.00 L.F. 8" DI CL Pipe.

Sta. 4+57.40, Water Line 1 = N-3852.80 E-3538.54
 Install 1-8" CIMJ 45° Bend (Lt.)

Sta. 4+22.62, Water Line 1 = N-3818.02 E-3538.21
 Install 1-8" CIMJ 22.5° Bend (Lt.)
 Actual Deflection = 21° 49'
 End Trenchless Installation of 8" Pipe.

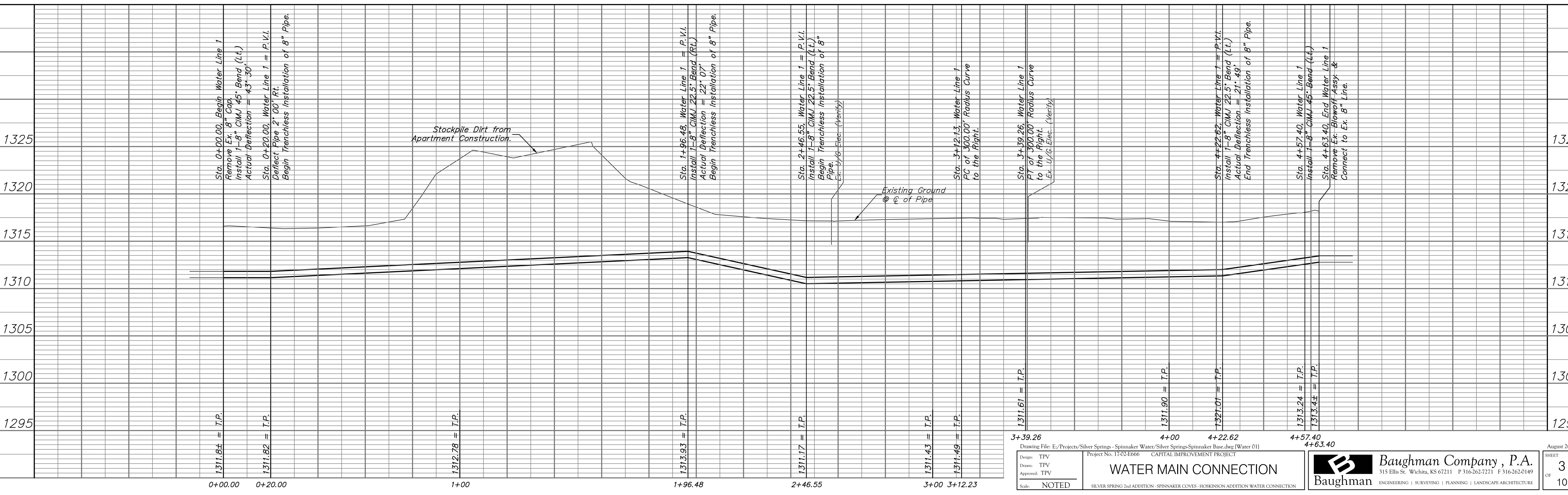
Sta. 3+39.26, Water Line 1 = N-3740.92 E-3506.50
 PT of 300.00' Radius Curve to the Right.

Sta. 2+46.55, Water Line 1 = N-3652.76 E-3477.93
 Install 1-8" CIMJ 22.5° Bend (Lt.)
 Begin Trenchless Installation of 8" Pipe.

Install 50.08 L.F. 8" Pipe.

Install 176.48 L.F. 8" Pipe by Trenchless Methods.

Sta. 0+20.00, Water Line 1 = N-3445.99 E-3392.67
 Deflect Pipe 2° 00' Rt.
 Begin Trenchless Installation of 8" Pipe.



Design: TPV	Drawn: TPV	Approved: TPV	Scale: NOTED
WATER MAIN CONNECTION			
SILVER SPRING 2nd ADDITION - SPINNAKER COVES - HOSKINSON ADDITION WATER CONNECTION			
Baughman Company, P.A. 315 Ellis St. Wichita, KS 67211 P 316-262-2271 F 316-262-0149 ENGINEERING SURVEYING PLANNING LANDSCAPE ARCHITECTURE			August 2017 SHEET 3 OF 10