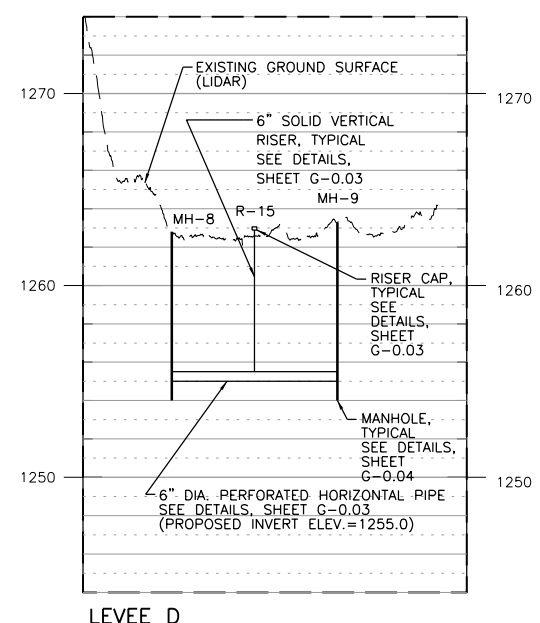
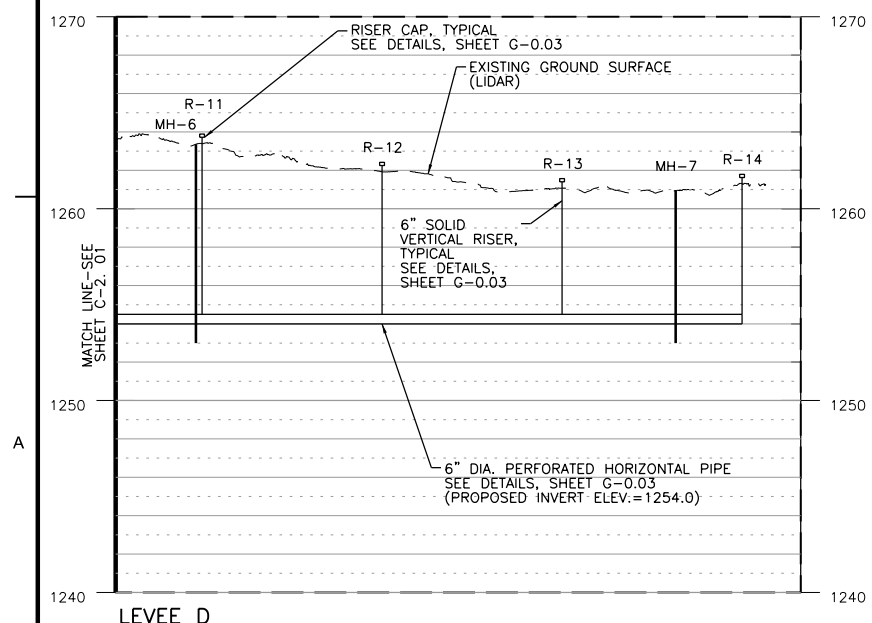


RISER/MANHOLE COORDINATES		
POINT NAME	NORTHING	EASTING
MH-6	1645405	1642356
MH-7	1645104	1643308
MH-8	1644824	1645265
MH-9	1644829	1645610
R-11	1645400	1642368
R-12	1645268	1642719
R-13	1645160	1643078
R-14	1645077	1643444
R-15	1644826	1645438

RISER/MANHOLE COORDINATES AND TOE-DRAIN PIPE INVERT ELEVATIONS ARE BASED LIDAR TOPOGRAPHIC DATA AND MAY REQUIRE MINOR HORIZONTAL AND VERTICAL ADJUSTMENTS TO BE MADE IN THE FIELD. ANY FIELD CHANGES TO THE TOE-DRAIN ALIGNMENT OR PIPE INVERTS SHALL BE APPROVED BY THE CITY OF WICHITA'S STORMWATER ENGINEER.



PROFILE SCALE (40:1 EXAGGERATION):
 HORIZONTAL: 1"=200'
 VERTICAL: 1"=5'

DATE	APPR.
DESCRIPTION	MARK

amec
 AMEC Earth & Environmental, Inc.
 1129 SW Winemaker
 Topeka, Kansas 66604
 Phone: (785) 272-6830
 Fax: (785) 272-6878



LOWER LEVEL "D" TOE DRAIN INSTALLATION
 WICHITA-VALLEY CENTER LOCAL
 FLOOD PROTECTION PROJECT
 WICHITA, KANSAS

PREPARED FOR
 THE CITY OF WICHITA, KANSAS
 455 N. Main
 Wichita, KS 67202



DESIGNED BY: Larry Sample, PE	DATE: 08-13-2012
DWN BY: RES	CKD BY: LBK
APP BY: L. SAMPLE	
FILE NAME: 08_C-2.2.dgn	
AMEC PROJ. NO. 5-6150-0001	

LEVEE TOE DRAIN PLAN
 AND PROFILE
C-2.02
 SHEET 2 OF 17