

BENCHMARKS:
 RR spike in asphalt, SW COR., N1/2, SW1/4, Sec. 34, TWP. 26-S, R-2-E. Elev. = 1400.59 NAVD88

RR spike in E. face of power pole, 174± N. of S. line, N1/2, SW1/4 & 49± E. of W. line, SW1/4, Sec. 34, TWP. 26-S, R-2-E. Elev. = 1398.64 NAVD88

RR spike in S. face of power pole, 294± S. of N. line, SW1/4, & 48± E. of W. line, SW1/4, Sec. 34, TWP. 26-S, R-2-E. Elev. = 1386.14 NAVD88

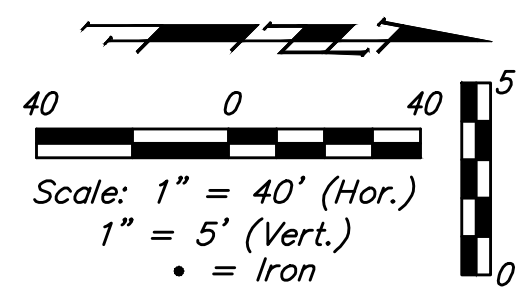
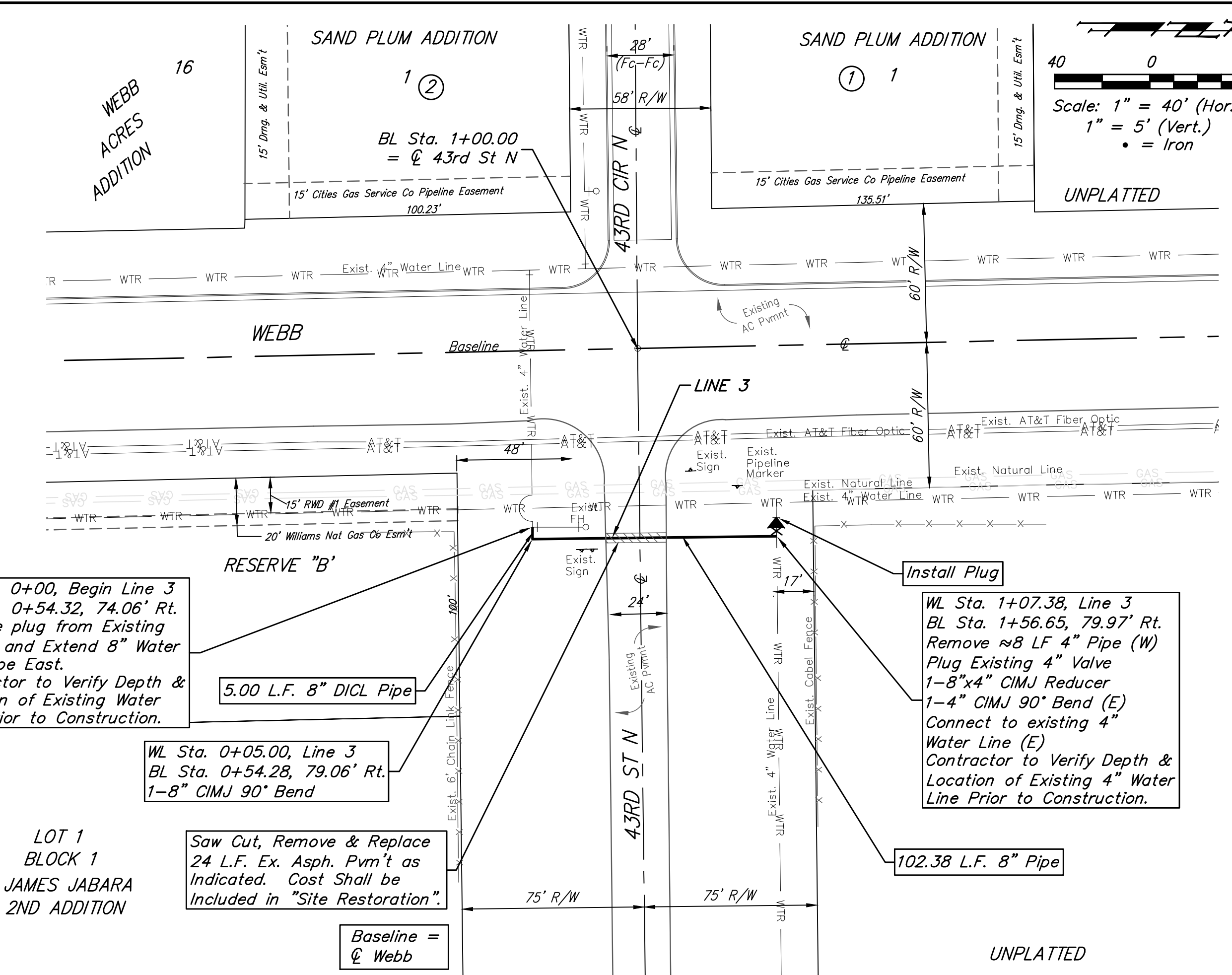
WL Sta. 0+00, Begin Line 3
 BL Sta. 0+54.32, 74.06' Rt.
 Remove plug from Existing 8" Tee and Extend 8" Water Line Pipe East.
 Contractor to Verify Depth & Location of Existing Water Line Prior to Construction.

WL Sta. 0+05.00, Line 3
 BL Sta. 0+54.28, 79.06' Rt.
 1-8" CIMJ 90° Bend

Saw Cut, Remove & Replace 24 L.F. Ex. Asph. Pvm't as Indicated. Cost Shall be Included in "Site Restoration".

Baseline = ϕ Webb

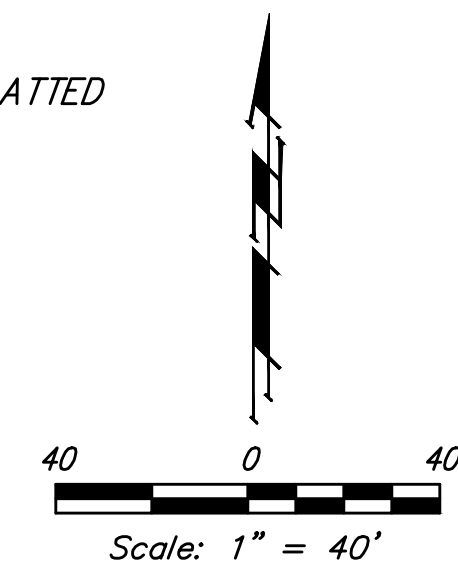
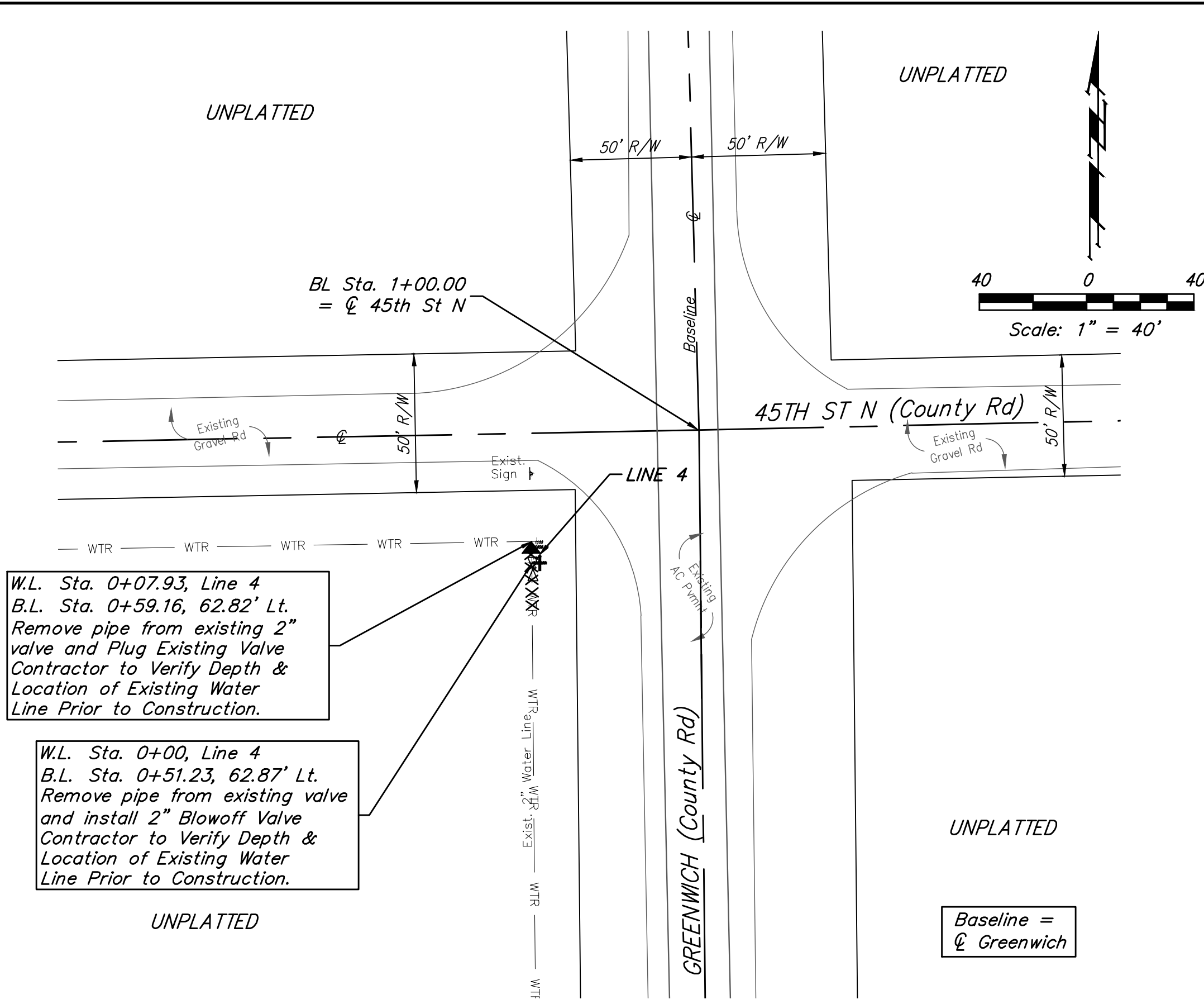
LOT 1
 BLOCK 1
 COLONEL JAMES JABARA
 AIRPORT 2ND ADDITION



WL Sta. 0+07.93, Line 4
 B.L. Sta. 0+59.16, 62.82' Lt.
 Remove pipe from existing 2" valve and Plug Existing Valve
 Contractor to Verify Depth & Location of Existing Water Line Prior to Construction.

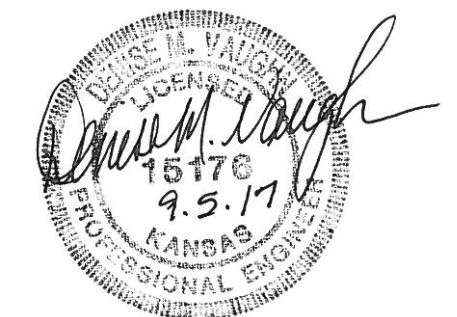
WL Sta. 0+00, Line 4
 B.L. Sta. 0+51.23, 62.87' Lt.
 Remove pipe from existing valve and install 2" Blowoff Valve
 Contractor to Verify Depth & Location of Existing Water Line Prior to Construction.

Baseline = ϕ Greenwich



1435	WL Sta. 0+00, Begin Line 3	1435
1430	BL Sta. 0+54.32, 74.06' Rt. Remove plug from Existing 8" Tee and Extend 8" Water Line Pipe East.	1430
1425	WL Sta. 0+05.00, Line 3	1425
1420	BL Sta. 0+54.28, 79.06' Rt. 1-8" CIMJ 90° Bend	1420
1415	WL Sta. 0+25.00, Line 3-PV	1415
1410	Existing Water Line	1410
1405	LINE 3	1405
1400	Existing Ground = Proposed Grade	1400
1395	1413.30 = T.P. (Verify)	1395
	1413.14 = T.P.	
	1412.50 = T.P.	
	1412.50 = T.P.	
	1413.30 = T.P. (8')	
	1413.13 = T.P. (4" Verify)	
	0+00 0+05 0+25 0+80 1+07.38	

NOTE:
 All necessary fittings, appurtenances and pipe removal necessary to terminate existing lines and connect to proposed water lines shall be incidental to proposed pipe and valve bid items. Replace existing grass in this area "in kind" as necessary to restore areas disturbed by construction to original condition including, but not limited to, top soil, seed and/or sod. Cost of seeding and/or sod shall be included in lump sum bid item "Seeding".



	Brookfield Addition - Phase I LINE 3 & LINE 4 Water Distribution System	
	Baughman Company, P.A. 315 Ellis St. Wichita, KS 67211 P 316-262-7271 F 316-262-0149 ENGINEERING SURVEYING PLANNING LANDSCAPE ARCHITECTURE	
PROJECT NUMBER 448-90803	DESIGN DMV	DRAWN JAK
REVISIONS:	APPROVED	DATE 9/05/17
	SCALE Noted	SHEET 10 OF 21