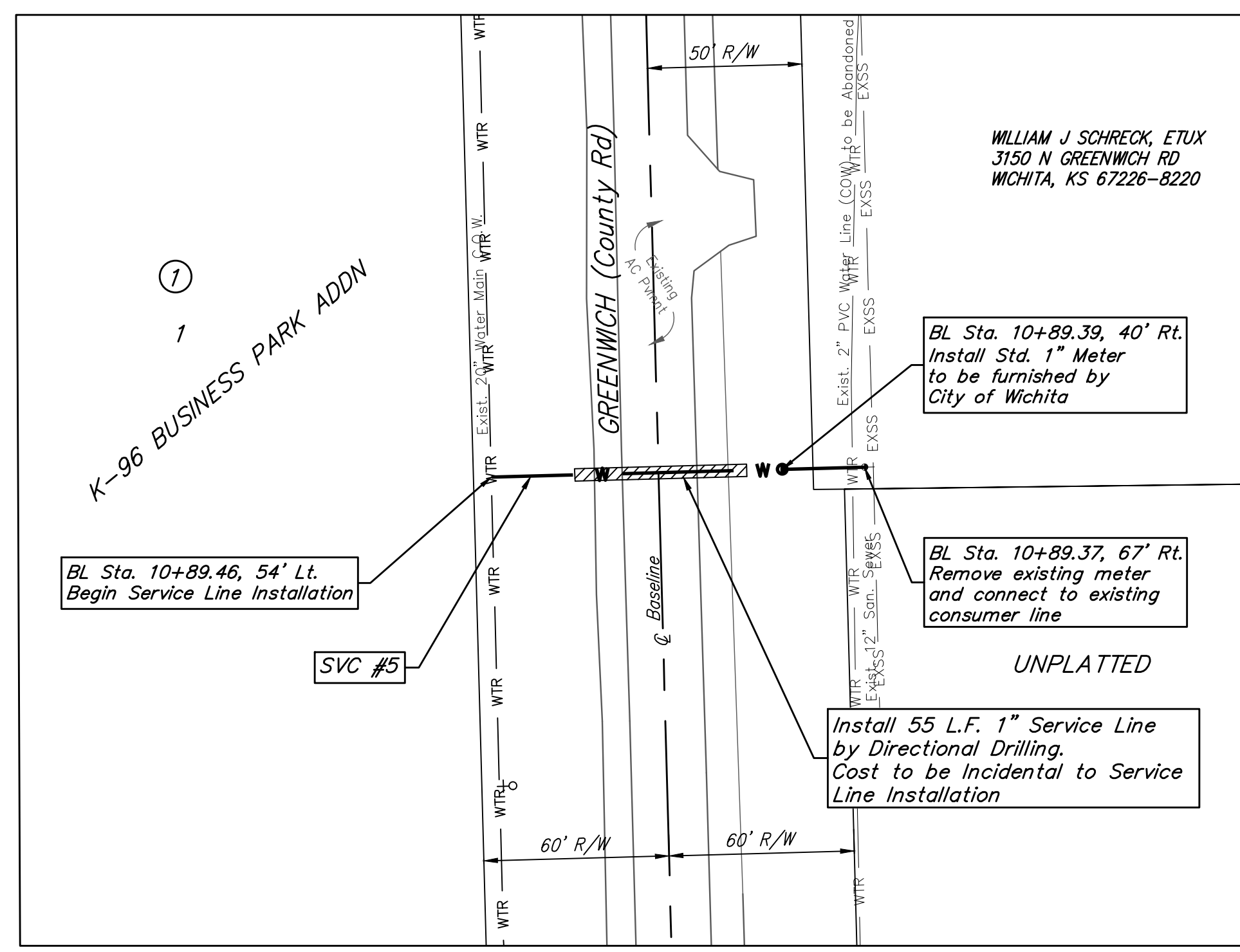
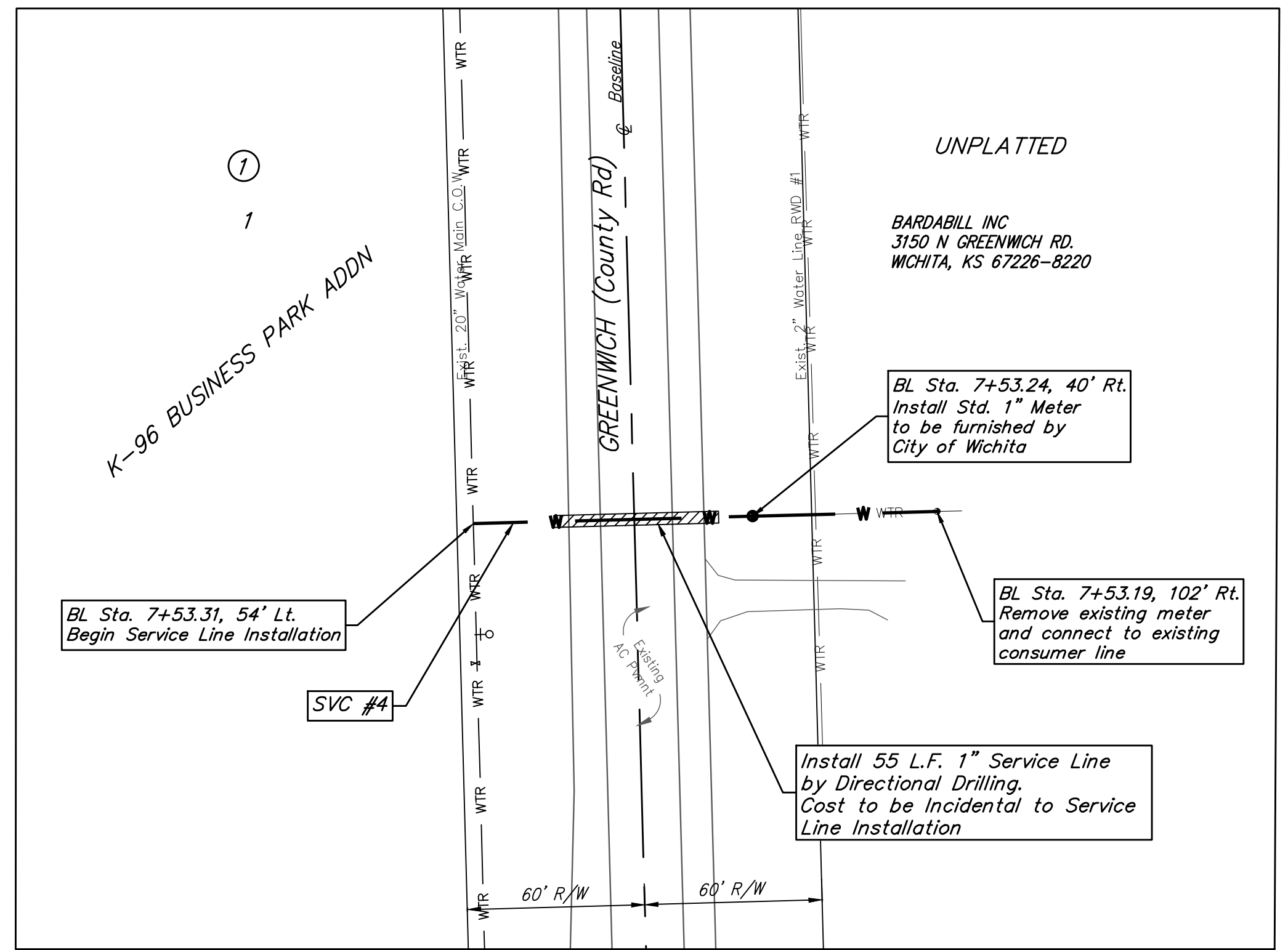


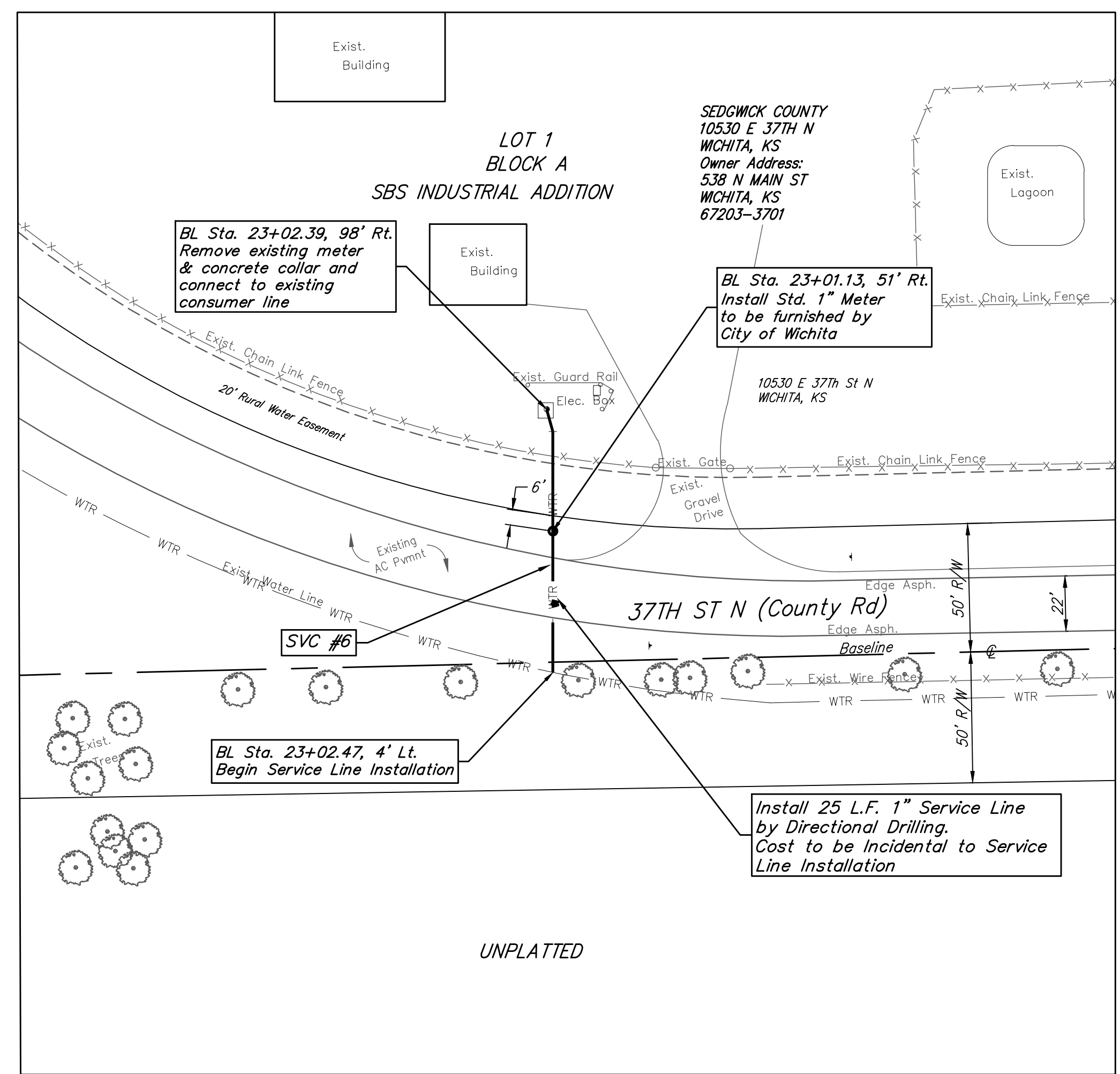
BENCHMARKS:
 RR spike in asphalt, SW COR., N1/2, SW1/4, Sec. 34, TWP. 26-S, R-2-E. Elev. = 1400.59 NAVD88
 RR spike in E. face of power pole, 174± N. of S. line, N1/2, SW1/4 & 49± E. of W. line, SW1/4, Sec. 34, TWP. 26-S, R-2-E. Elev. = 1398.64 NAVD88
 RR spike in S. face of power pole, 294± S. of N. line, SW1/4, & 48± E. of W. line, SW1/4, Sec. 34, TWP. 26-S, R-2-E. Elev. = 1386.14 NAVD88



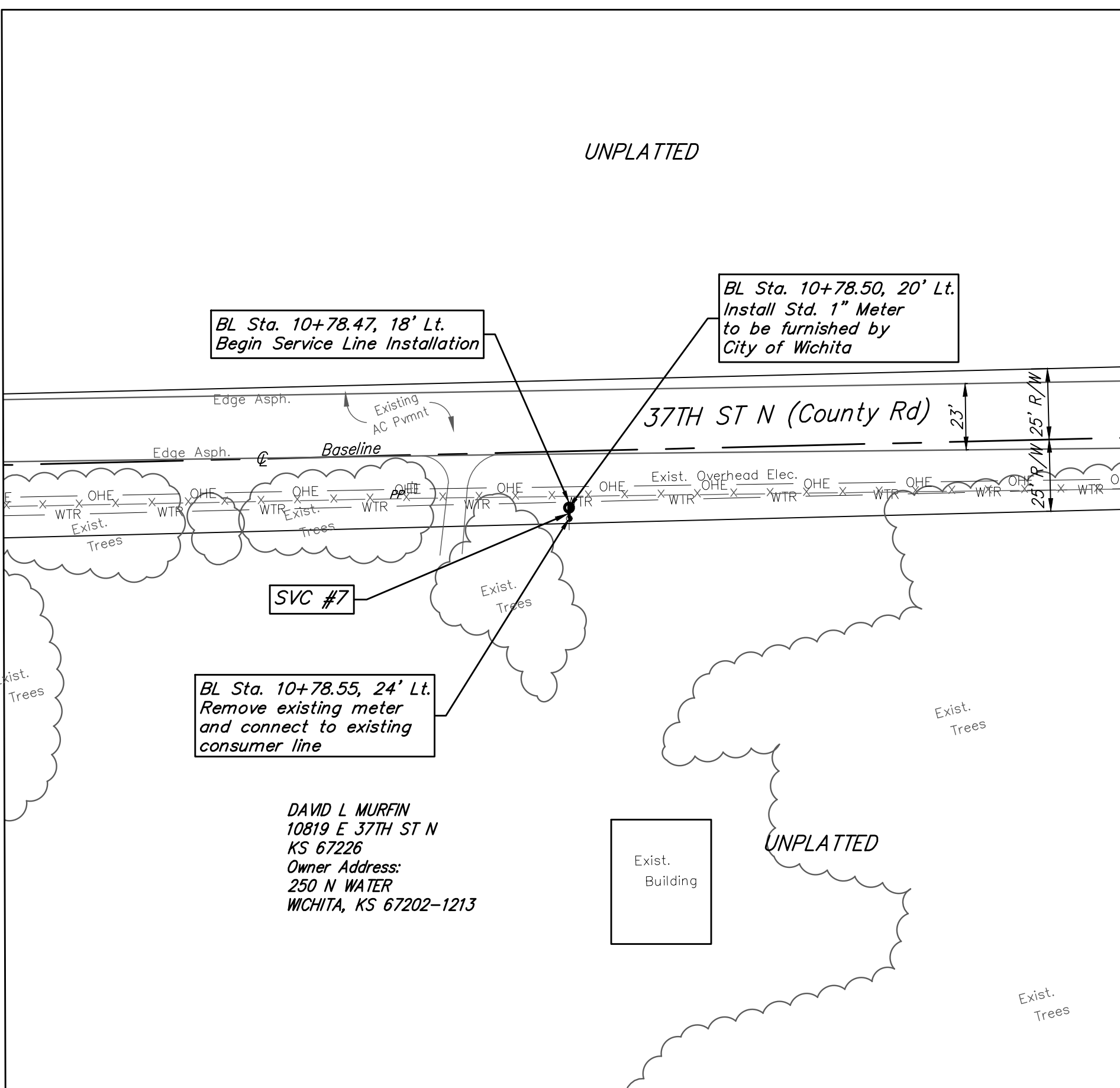
Baseline =
 ⊕ Greenwich
 = Section Line

WATER SERVICE TABLE

NUMBER	LOCATION		FOR INFORMATION ONLY
	ADDRESS	BL STATION	APPROXIMATE LENGTH OF PIPE
4	Not Available	7+53.31, 54' Lt.	157.0'
5	3150 N GREENWICH RD	10+89.46, 54' Lt.	121.0'
6	10530 E 37TH N	23+01.13, 51' Rt.	105.0'
7	10819 E 37TH ST N	10+78.50, 20' Lt.	6.0'



Baseline =
 ⊕ 37th ST N
 = Section Line
 BL Sta. 0+00 =
 ⊕ Greenwich



NOTE:
 All adaptors needed to connect to the existing consumer line shall be incidental to the price bid for new water service installation. Removal of the existing water meter setter and meter box with a straight pipe installed between the ends of the consumer line pipe shall be incidental to the price bid for new water service installation. Replace existing grass in this area "in kind" as necessary to restore areas disturbed by construction to original condition including, but not limited to, top soil, seed and/or sod. Cost of seeding and/or sod shall be included in lump sum bid item "Seeding".



Baughman Brookfield Addition - Phase I
Service Line & Meter Replacement
 Water Distribution System

Baughman Company, P.A. 315 Ellis St. Wichita, KS 67211 P 316-262-7271 F 316-262-0149
 ENGINEERING | SURVEYING | PLANNING | LANDSCAPE ARCHITECTURE

PROJECT NUMBER 448-90803	DESIGN DMV	DRAWN JAK
REVISIONS:	APPROVED	DATE 9/05/17
	SCALE Noted	SHEET 11 OF 21

E:\Projects\Brookfield Addition_1604F190\Engineering\WTR MAIN_1608539\WTRMAIN PLANS.dwg