

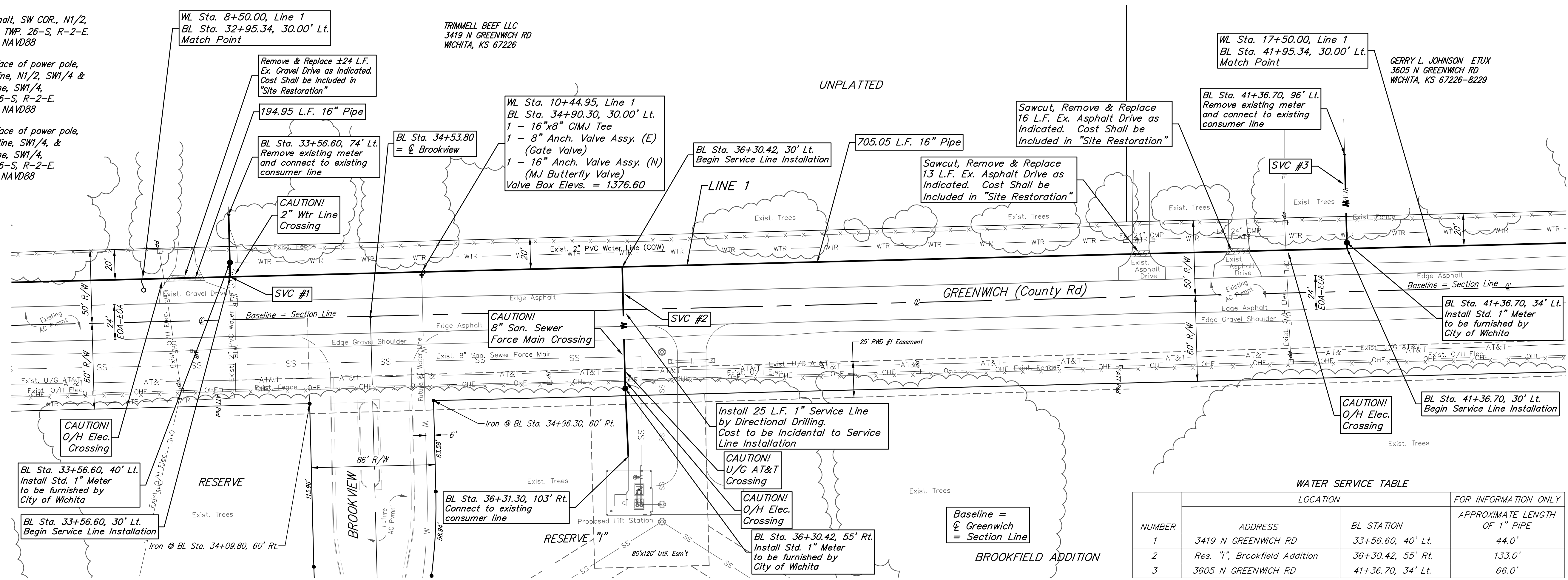
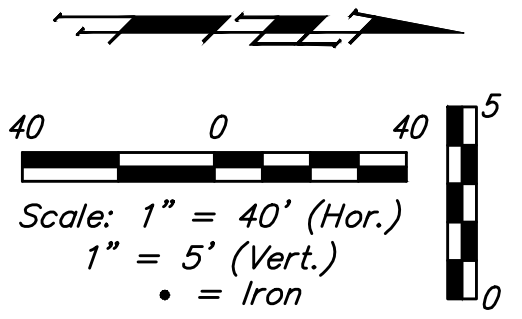
**BENCHMARKS:**  
 RR spike in asphalt, SW COR., N1/2, SW1/4, Sec. 34, TWP. 26-S, R-2-E. Elev. = 1400.59 NAVD88

RR spike in E. face of power pole, 174± N. of S. line, N1/2, SW1/4 & 49± E. of W. line, SW1/4, Sec. 34, TWP. 26-S, R-2-E. Elev. = 1398.64 NAVD88

RR spike in S. face of power pole, 294± S. of N. line, SW1/4, & 48± E. of W. line, SW1/4, Sec. 34, TWP. 26-S, R-2-E. Elev. = 1386.14 NAVD88

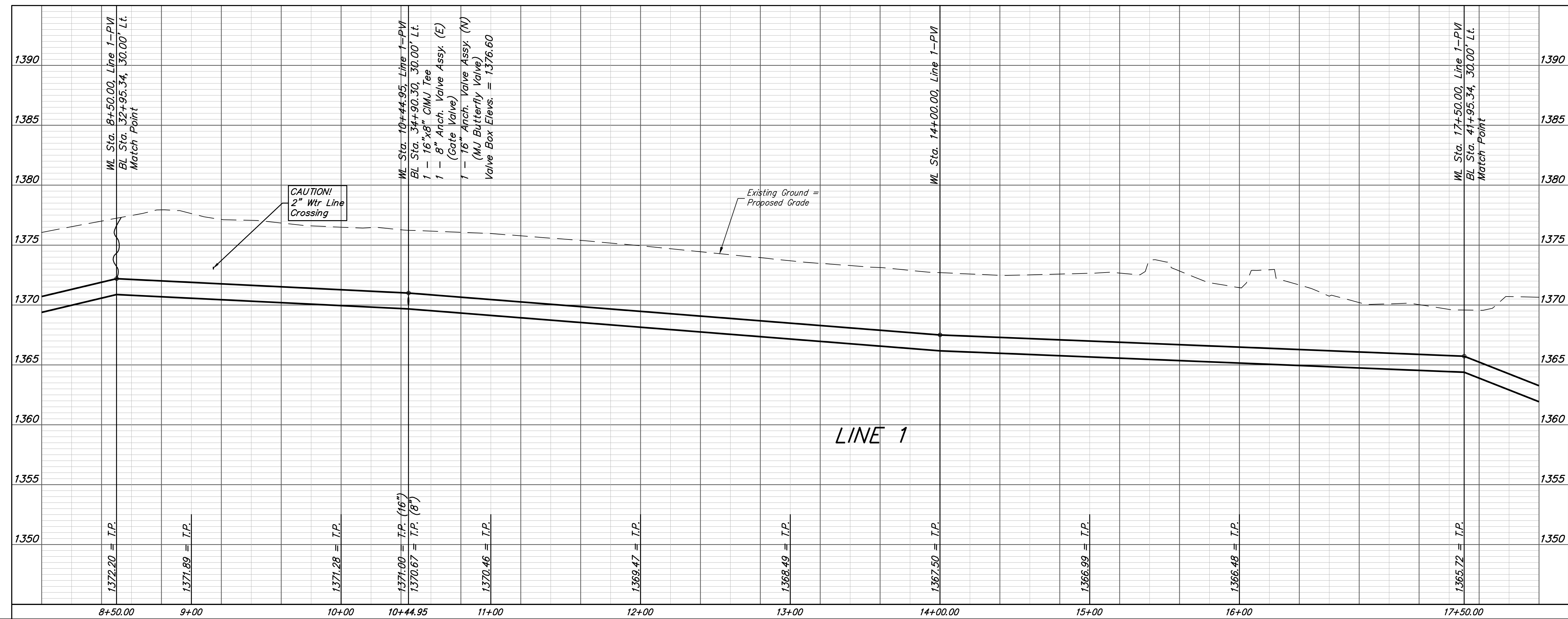
TRIMMELL BEEF LLC  
 3419 N GREENWICH RD  
 WICHITA, KS 67226

GERRY L. JOHNSON ETUX  
 3605 N GREENWICH RD  
 WICHITA, KS 67226-8229



NUMBER	LOCATION		FOR INFORMATION ONLY APPROXIMATE LENGTH OF 1" PIPE
	ADDRESS	BL STATION	
1	3419 N GREENWICH RD	33+56.60, 40' Lt.	44.0'
2	Res. "I", Brookfield Addition	36+30.42, 55' Rt.	133.0'
3	3605 N GREENWICH RD	41+36.70, 34' Lt.	66.0'

**NOTE:**  
 All adaptors needed to connect to the existing consumer line shall be incidental to the price bid for new water service installation. Removal of the existing water meter setter and meter box with a straight pipe installed between the ends of the consumer line pipe shall be incidental to the price bid for new water service installation. Replace existing grass in this area "in kind" as necessary to restore areas disturbed by construction to original condition including, but not limited to, top soil, seed and/or sod.



**Baughman** Brookfield Addition - Phase I  
**LINE 1**  
 Water Distribution System

Baughman Company, P.A. 315 Ellis St. Wichita, KS 67211 P 316-262-7271 F 316-262-0149  
 ENGINEERING | SURVEYING | PLANNING | LANDSCAPE ARCHITECTURE

PROJECT NUMBER 448-90803	DESIGN DMV	DRAWN JAK
REVISIONS:	APPROVED	DATE 9/05/17
SCALE Noted		SHEET <b>5 OF 21</b>

Path: \\Projects\Brookfield Addition\_1604P190\Engineering\WTR MAIN\_1608-539\WTRMAIN PLANS.dwg